

Metropolitan Council

2025 Governor Walz Capital Budget Recommendations
House Capital Investment Committee – February 25, 2025



Metropolitan Council



Governor Walz recommends:

- \$15 million for busway capital improvement program
- \$4.6 million for inflow and infiltration grant program
- \$2.3 million for the regional parks and trails bonding program

Busway Capital Improvement Program



ARTERIAL

A B C D E F G H

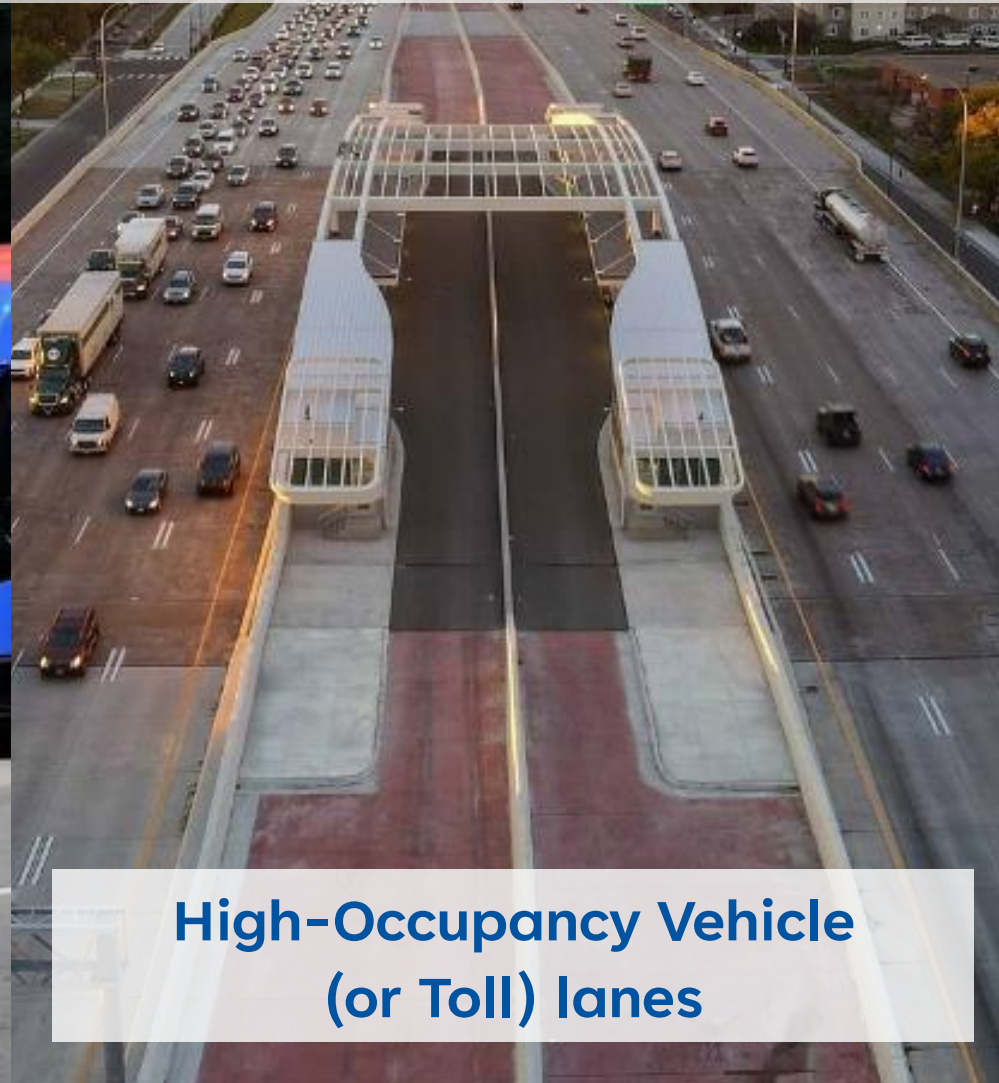


Mixed traffic with
select bus-only lanes

HIGHWAY

ORANGE

RED

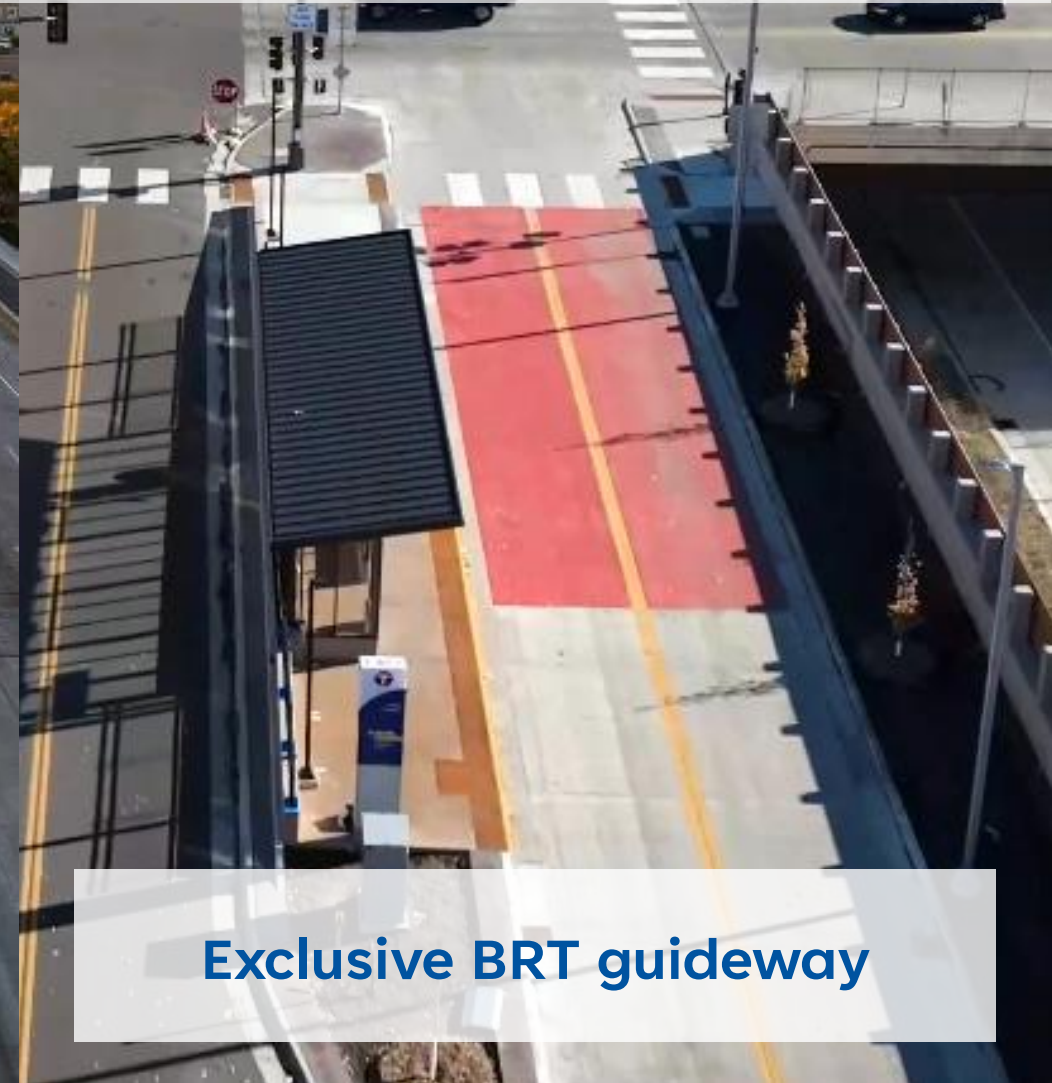


High-Occupancy Vehicle
(or Toll) lanes

GUIDEWAY

GOLD

PURPLE



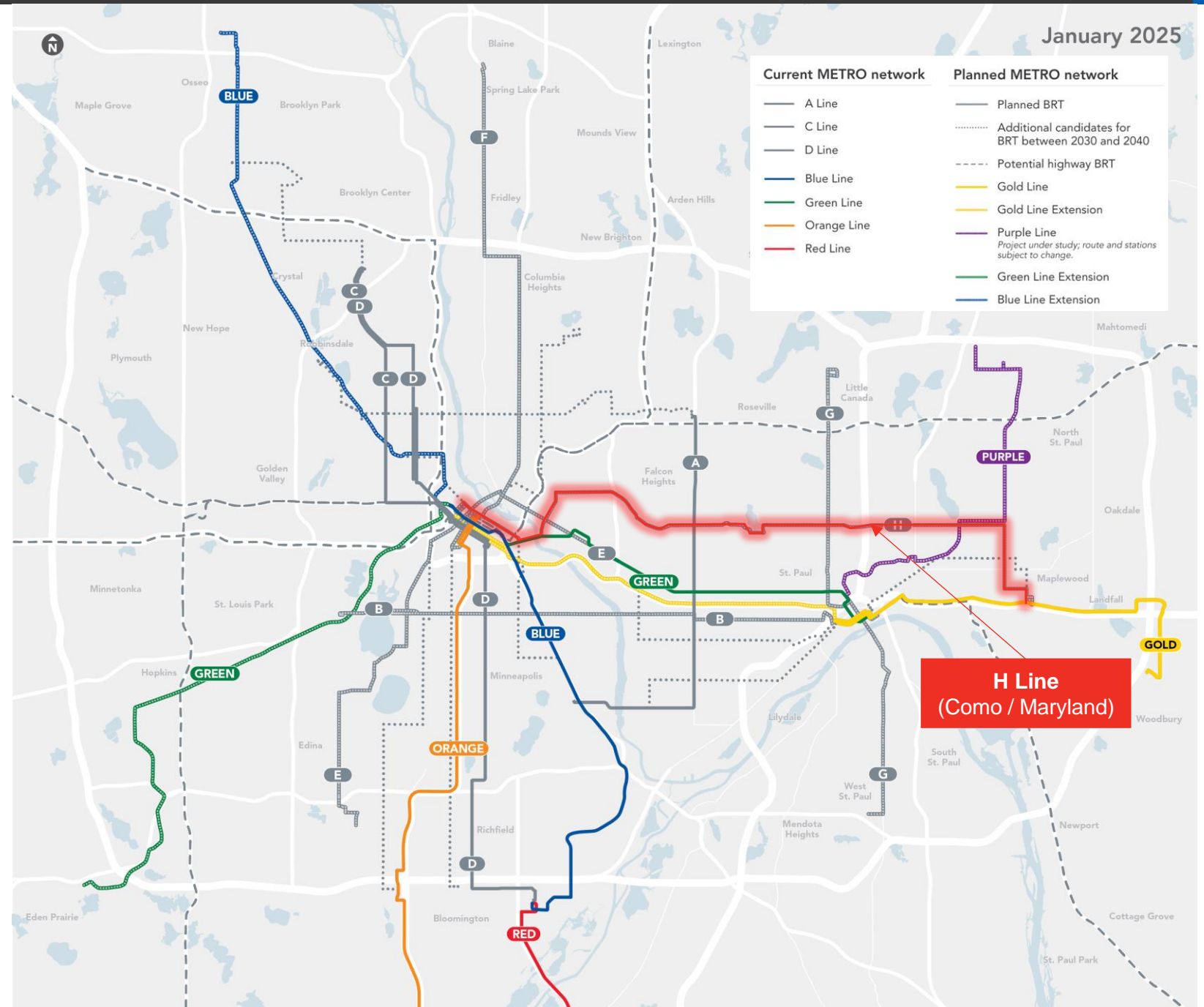
Exclusive BRT guideway

Three varieties of BRT, one  METRO transitway system

A growing network of Arterial BRT serving all-day, all-purpose trips

State bonding investment has been critical to advancing the arterial BRT network

- A Line (Snelling): opened 2016
- B Line (Lake/Marshall): Construction; opens June 2025
- C Line (Penn): opened 2019
- D Line (Chicago/Fremont): opened 2022
- E Line (Hennepin/France): Construction; opens Dec. 2025
- F Line (Central): Engineering
- G Line (Rice/Robert): Planning
- **H Line (Como/Maryland): Planning**



Bus Rapid Transit Provides

A faster, more reliable ride,
20-25% faster than existing bus



An improved experience at
enhanced stations and on board



Busway Capital Improvement Program

Bus Rapid Transit

- Riders took more than 8.3 million rides on BRT lines in 2024
- Systemwide ridership on BRT grew 14% in 2024 compared to 2023
- Continued expansion of fast, frequent, all-day reliable services planned with three BRT lines opening in 2025
 - METRO Gold Line
 - METRO B Line
 - METRO E Line



Busway Capital Improvement Program



\$15 million

- For real property acquisition, predesign, design, engineering, and construction of arterial bus rapid transit, including utility relocation, demolition, and furnishing and equipping facilities for arterial bus rapid transit projects
- Expands METRO network of fast, frequent, all-day transitway service
- Advances the H Line (Como / Maryland from Minneapolis to Sun Ray)
 - Currently in planning, targeted for 2028-2029 construction
 - 2023 bonds are advancing the current planning / preliminary design phase
 - \$120-150 million project (preliminary cost estimate at conceptual planning level)
 - \$60 million secured to date, including \$25 million in federal funding
- Provides local funding match critical to pursuing estimated \$60-80 million in additional federal funding through the Federal Transit Administration Capital Investment Grants program

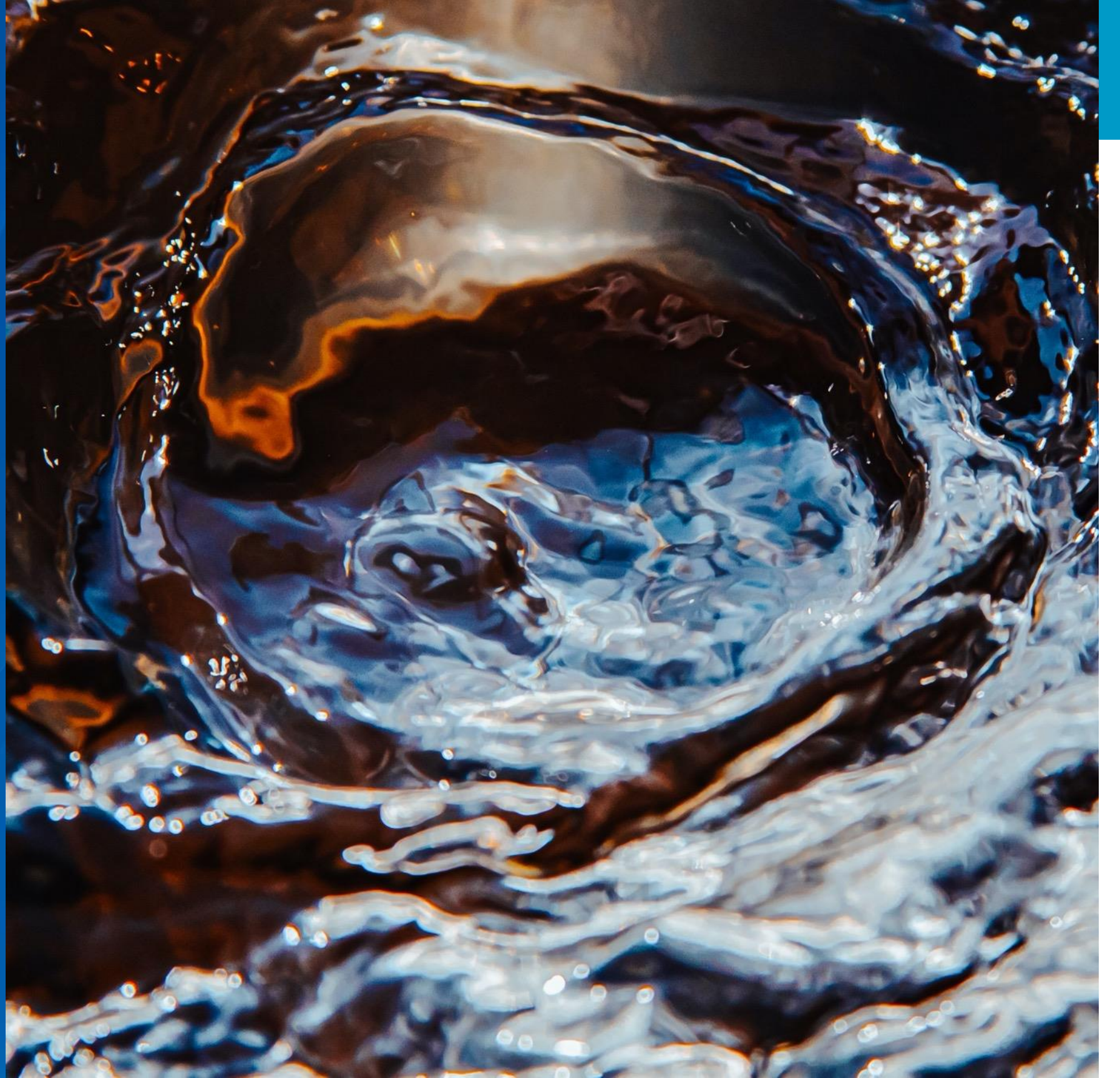


H Line

Como / Maryland from
Minneapolis to Sun Ray



Inflow and Infiltration Grant Program



Sustainability: Water



Build a resilient region that mitigates its adverse contribution to climate change, with a focus on water quality, and meets the challenge of the climate crisis.

Wastewater system

WHO WE SERVE

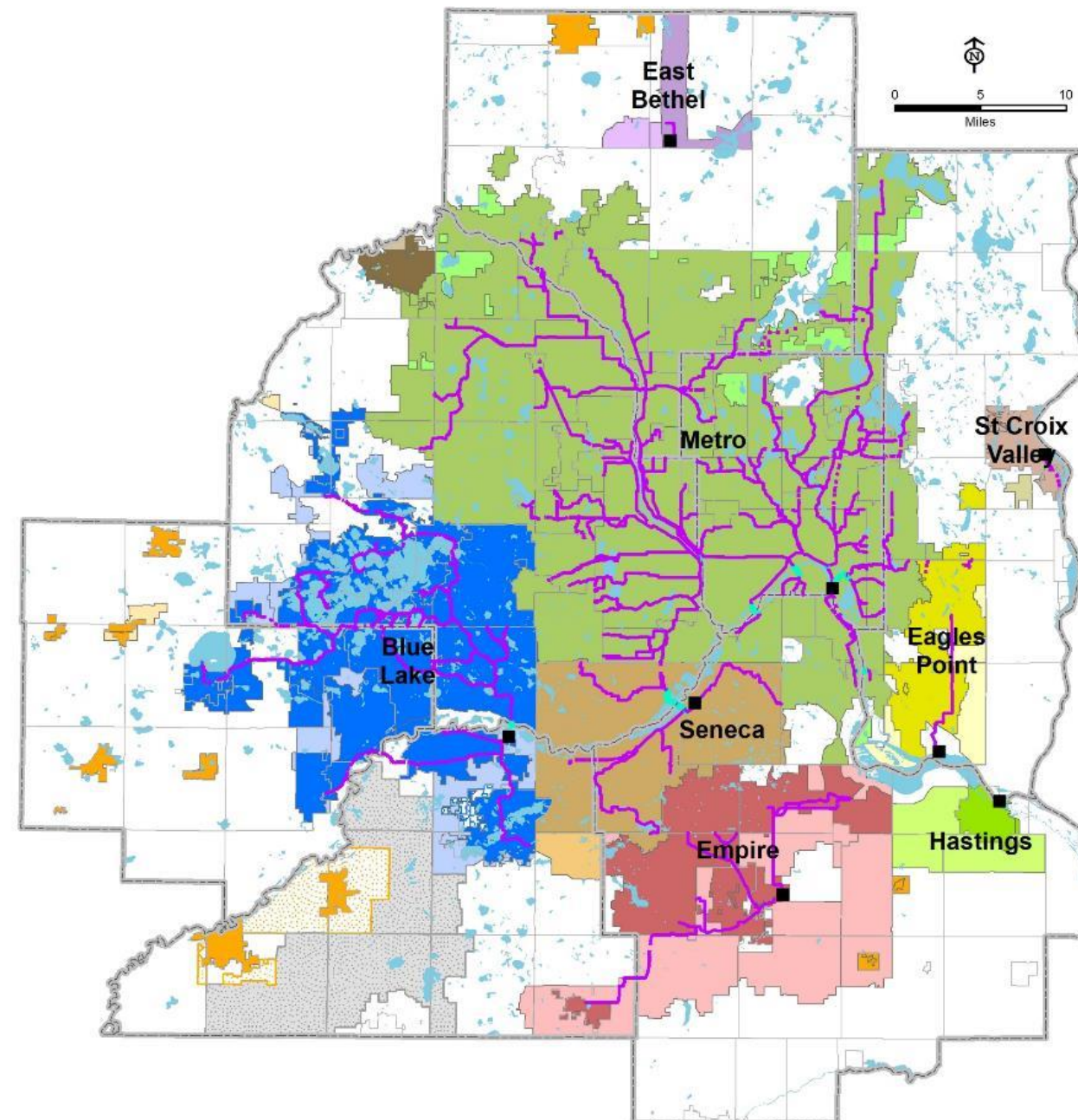
- 7-county Metro Area
- 111 communities
- 2,800,000+ people

OUR FACILITIES

- 9 wastewater treatment plants
- 634 miles of interceptors
- 250 million gallons per day (avg.)

OUR ORGANIZATION

- 600+ employees
- \$9.4 billion in valued assets
- \$350 million / year capital program



Wastewater System

Metropolitan Council

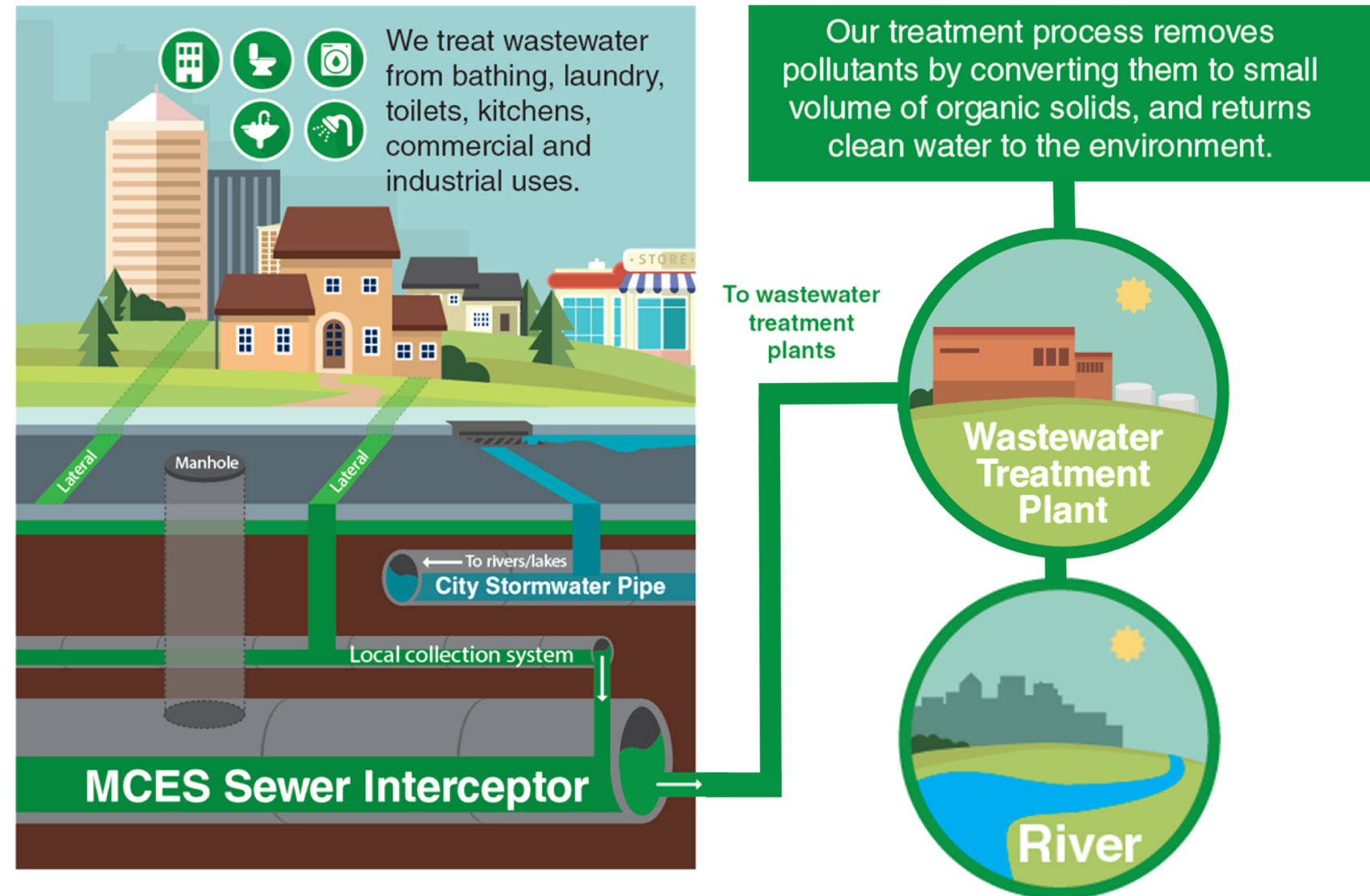
- Regional infrastructure

Cities and townships

- Connect from the street to regional infrastructure

Property owners

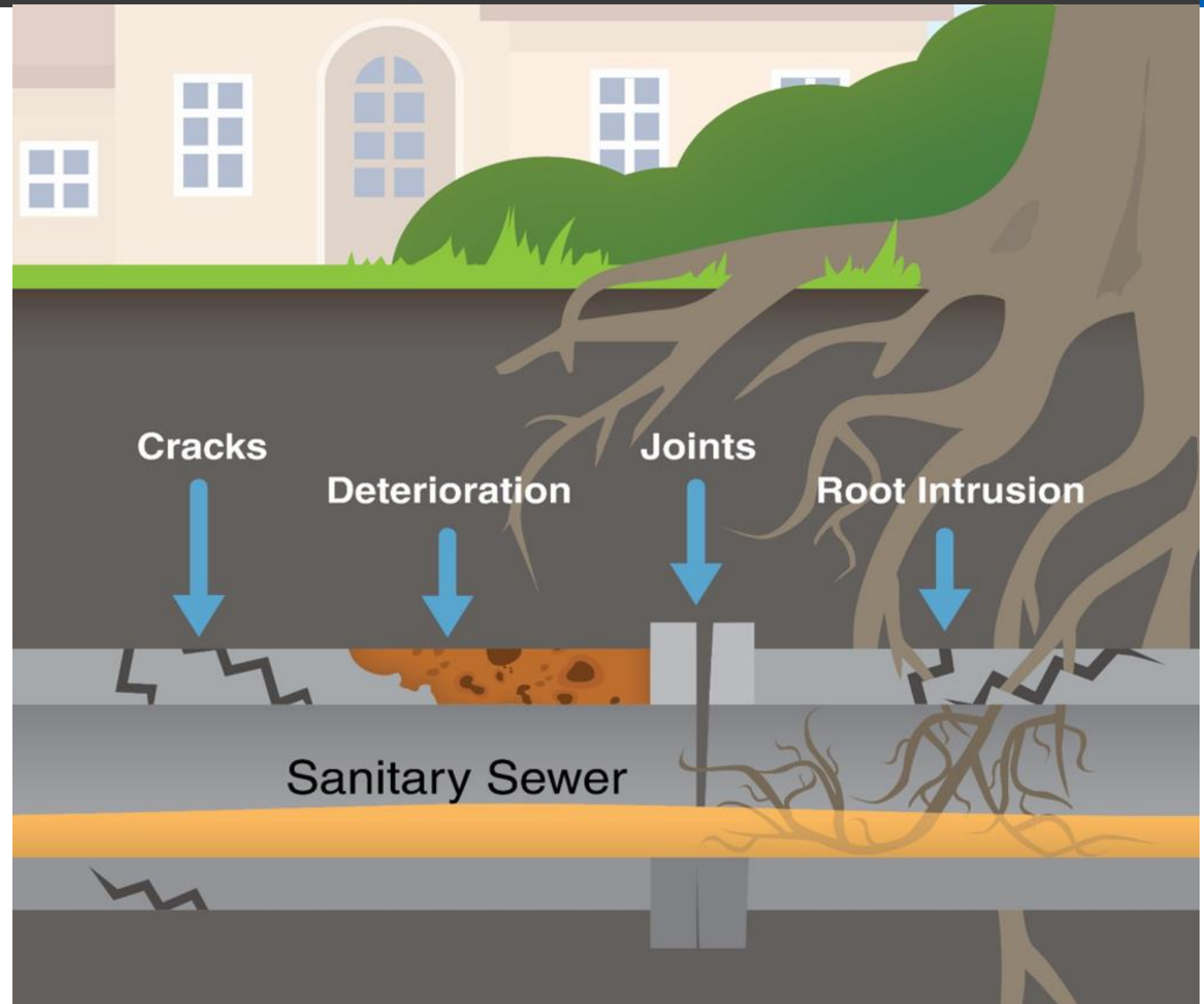
- Connect from the property to the street



Inflow and Infiltration

The cost of clear water in the wastewater system

- Unnecessarily treats clear water along with wastewater
- Causes sewer backups into homes
- Causes sewer overflows into rivers and lakes
- Increases sewer and utility fees
- Increases the need for larger and more expensive sewer pipes and treatment facilities



Repair pipes that connect to regional infrastructure

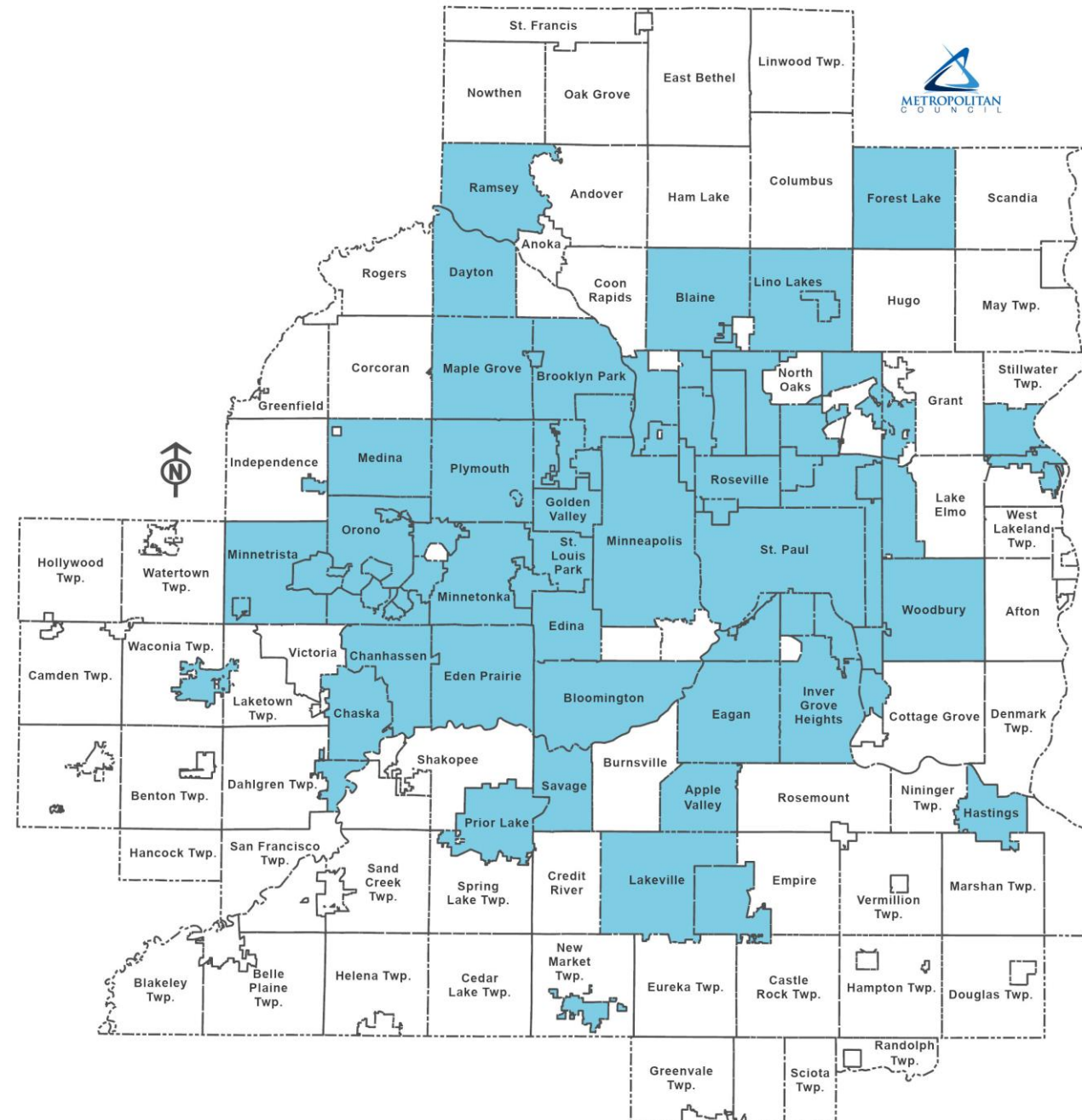


Municipal infrastructure capital improvements grant program: \$4.6 Million

- Grants to municipalities to reduce clear water in the municipal wastewater collection system
 - Grant funding traditionally covers up to 50 percent of the inflow and infiltration portion of project cost
- Cities are eligible if they have:
 - Excessive contributions of inflow and infiltration, or
 - A measurable flow rate within 20 percent of the allowable flow limit

Over 80 cities and townships impacted by inflow and infiltration

Apple Valley • Arden Hills • Bayport • Birchwood • Blaine • Bloomington • Brooklyn Center • Brooklyn Park • Carver • Centerville • Chanhassen • Chaska • Columbia Heights • Crystal • Dayton • Deephaven • Eagan • Eden Prairie • Edina • Elko-New Market • Excelsior • Falcon Heights • Farmington • Forest Lake • Fridley • Golden Valley • Greenwood • Hastings • Hopkins • Inver Grove Heights • Lakeville • Lauderdale • Lexington • Lilydale • Lino Lakes • Little Canada • Long Lake • Mahtomedi • Maple Grove • Maple Plain • Maplewood • Medicine Lake • Medina • Mendota • Mendota Heights • Minneapolis • Minnetonka • Minnetonka Beach • Minnetrista • Mound • Mounds View • New Brighton • New Hope • Newport • North St. Paul • Oak Park Heights • Oakdale • Orono • Osseo • Plymouth • Prior Lake • Ramsey • Robbinsdale • Roseville • Savage • Shoreview • Shorewood • South St. Paul • Spring Park • St. Anthony • St. Bonifacius • St. Louis Park • St. Paul • St. Paul Park • Stillwater • Tonka Bay • Vadnais Heights • Waconia • Wayzata • West St. Paul • White Bear Township • Woodbury



Regional Parks and Trails Bonding Program



Sustainability: Parks

Build a resilient region that fosters healthy residents and communities through investments in parks and trail infrastructure, supports active living, and restores natural resources to help mitigate the challenges of the climate crisis.



Regional Parks and Trails

\$2.3 million

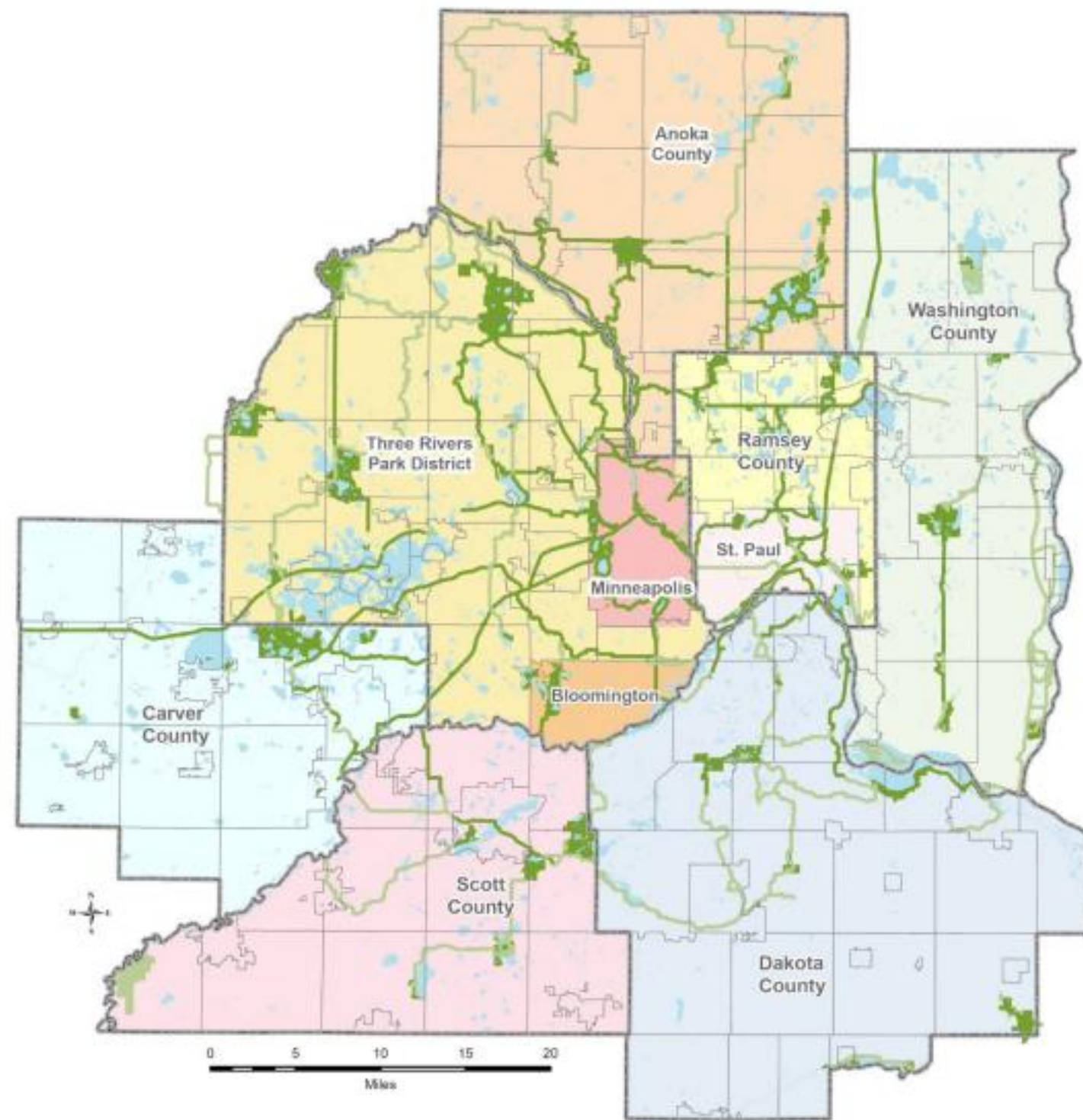
- Matched with \$1.53 million in regional funds to improve regional parks and trails
- 100% of funds passed through to the ten regional park implementing agencies
- Critical investments distributed across the region



Regional Parks & Trails System

The region's parks and trails:

- Connect people to the outdoors right in our own backyards
- Protect natural resources
- Make sure everyone in the region has access and feels welcomed
- 58 regional parks and park reserves + 8 special recreation features
- Over 65,000 acres of land protected
- Nearly 500 miles of interconnected trails
- Over 69 million visits in 2023



Jan. 2024

- | | |
|---|--------------------------------|
| — Regional Trail (Open to the Public) | □ County Boundaries |
| — Planned Regional Trail (Not Open to the Public) | □ City and Township Boundaries |
| ■ Regional Park (Open to the Public) | ■ Lakes and Rivers |
| ■ Planned Regional Park (Not Open to the Public) | |

Breakdown by Agency

Regional Park Implementing Agency	Amount*
Anoka County	\$368,798
Bloomington	\$91,367
Carver County	\$130,897
Dakota County	\$419,341
Minneapolis Park & Recreation Board	\$789,862
Ramsey County	\$322,325
Saint Paul	\$431,970
Scott County	\$164,001
Three Rivers Park District	\$849,969
Washington County	\$264,804
Total State Bond + Council Match	\$3,833,334

*Amounts are estimates as of January 2025 and would be updated as additional data for the distribution formula is available



Charlie Zelle

Chair, Metropolitan Council

