



HF1666 Child Care Center Construction Slayton, MN (pop. 1,990)

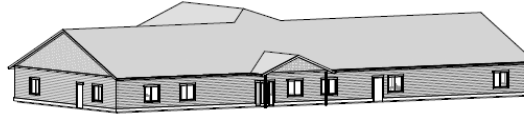


URGENT NEED
Could lose **76** daycare spots

ONE-TIME REQUEST
\$3 million in funding for the design, construction, furnishing, and equipping of a new childcare center in Slayton.

MAJOR CHALLENGE
Wonder World's lease at St. Ann's Church expires on July 31, 2026, after 53 years there. The church will not renew the lease.

BRIEF DESCRIPTION



The City of Slayton is seeking funds to build a new childcare facility on city-owned land near the municipal pool and elementary school and lease the property to Wonder World Preschool, Inc., a nonprofit childcare center for ages 6 months to 12 years old that has been in operation for over 53 years. They are licensed for 76 children and are the only childcare center in Slayton and Murray County. In June 2024, the Catholic Church notified Wonder World that it would not renew its lease, which ends July 31, 2026. Childcare is a critical need in our community; losing this center would have dire consequences for Slayton's parents, businesses, and organizations.

ADDITIONAL NOTES

One time request. Ongoing operational support is not needed. Funds are needed only for the capital construction of the new facility.

- Wonder World's budget can sustain new building operations; however, it cannot sustain debt service payments on a construction loan.

Non-Phased. The facility needs to be operational as soon as possible.

First Bonding Request in 2025. We have not asked for bonding on this project before

Other Funding Requests. We have applied to DEED childcare grant, multiple regional grant programs, and Congressionally Directed Spending (CDS) through Senators Klobuchar and Smith.

Project Costs. \$2.5 million design/Construction and \$500K Equipment/Furnishings.

CURRENT FACILITY

- About **6,000** Square Feet
- Licensed for **76** children

NEW FACILITY

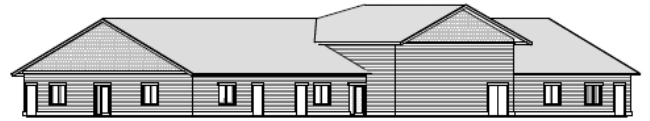
- **8,820** Square Feet
- License max for **92** children
- Added features:
 - Bathrooms in each classroom
 - A secured entrance
 - Dedicated kitchen space
 - Large motor play space (gym)

Funding Commitments

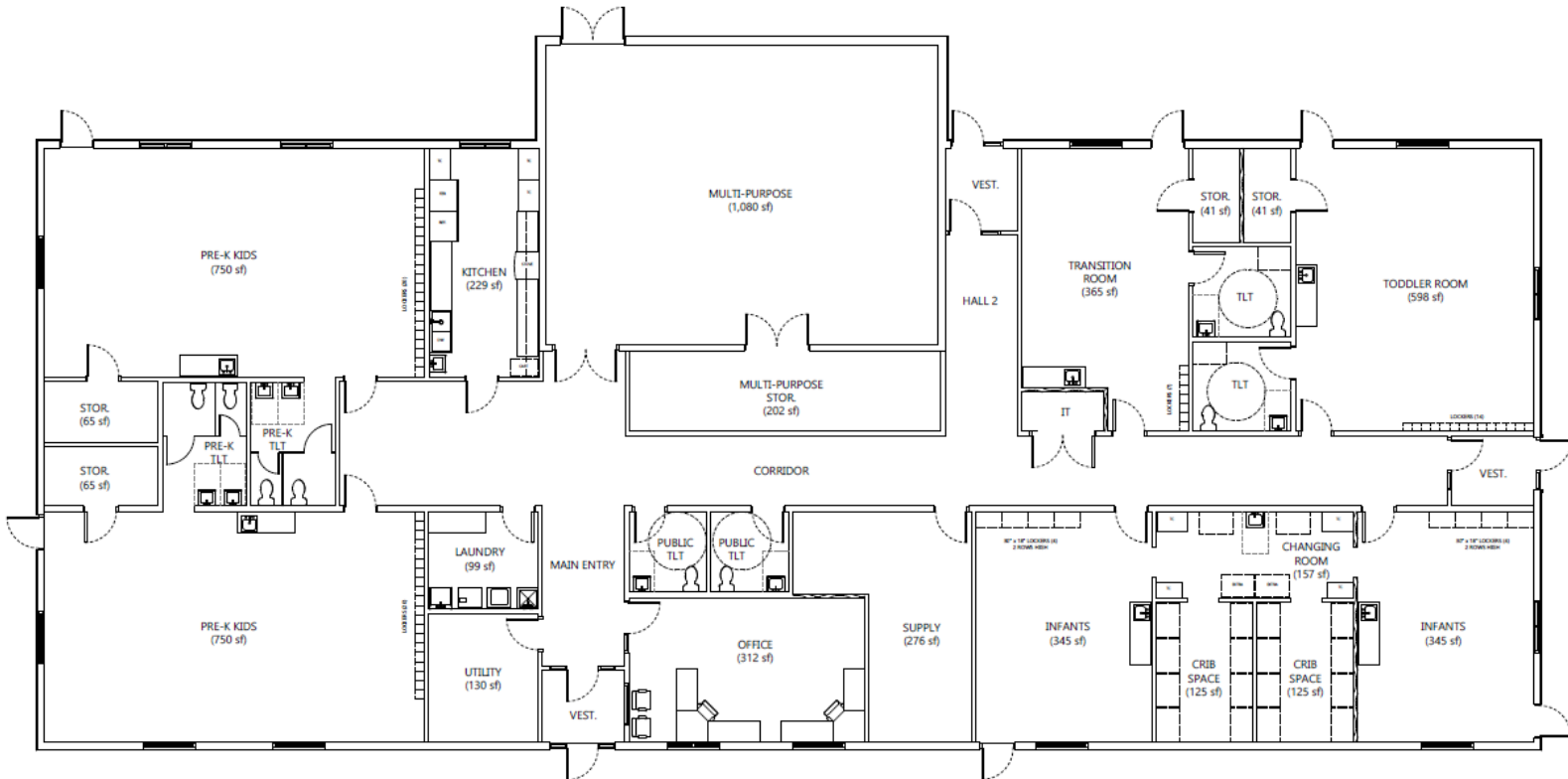
- \$225,000 from City of Slayton/Murray County Central School District/Murray County in pooled TIF \$\$.
- City is writing off the cost of land and utility extensions for the project. Estimated value of \$228,000.
- \$225,000 from Wonder World for construction expense.
- \$100,000 from Murray County. Larger commitment has been requested.
- Capital fundraising campaign is planned for Q2 2025.



FRONT VIEW



BACK VIEW



FIRST FLOOR PLAN
8,800 SQUARE FEET

Josh Malchow, Clerk/Administrator
507-836-8534
cityadmin@slayton.govoffice.com

Ashley Haken, Wonder World Board Secretary
507-696-7435
ashley.haken@wonderworldpreschool.org