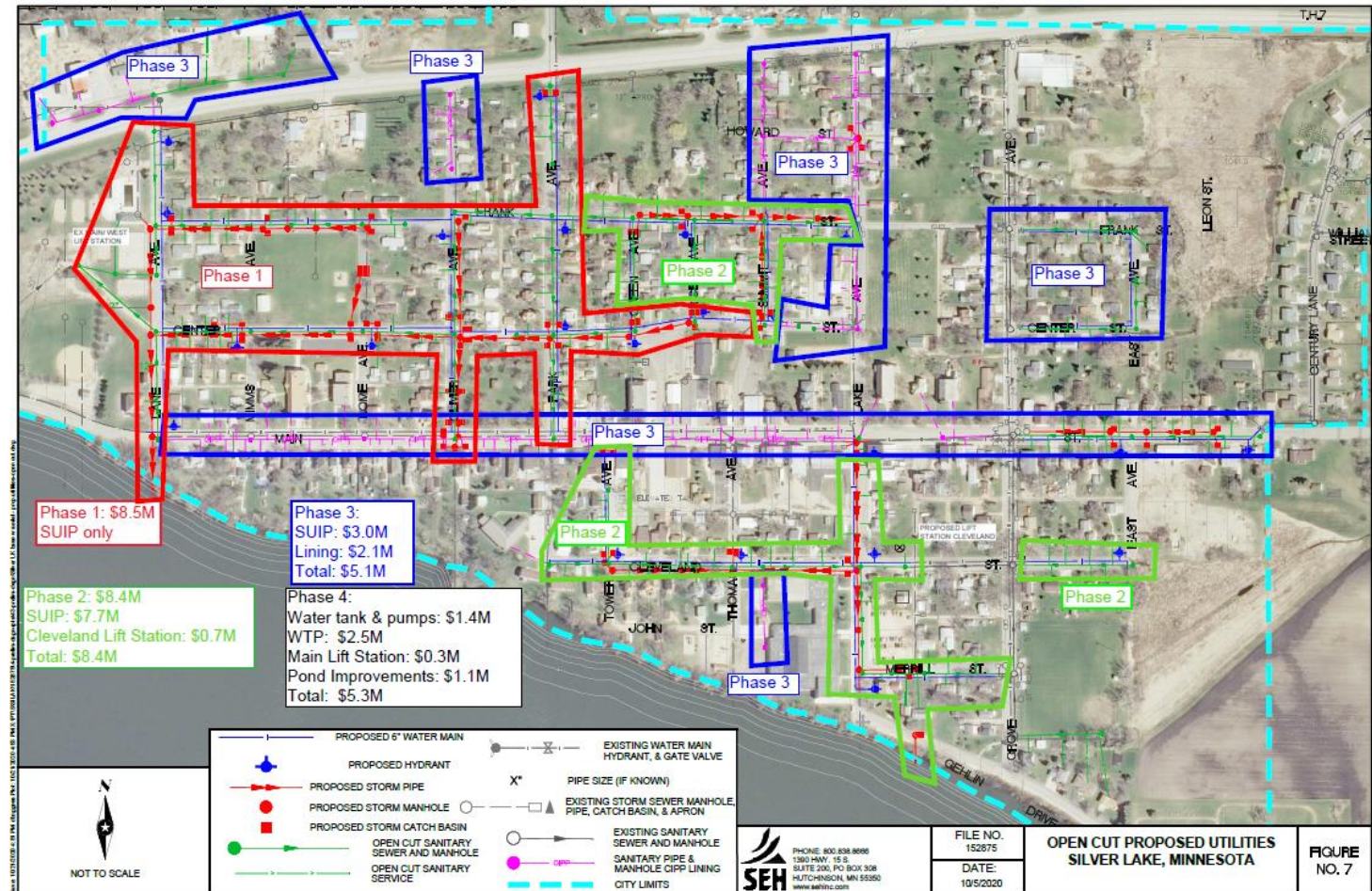


CITY OF SILVER LAKE

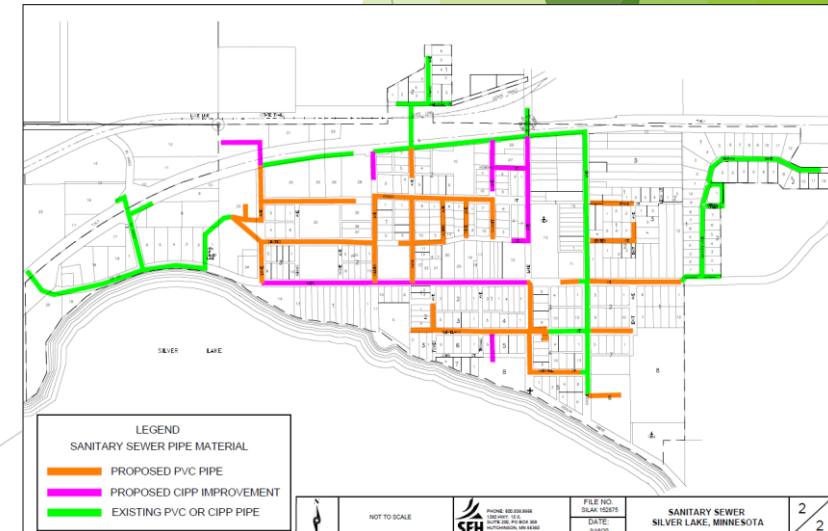
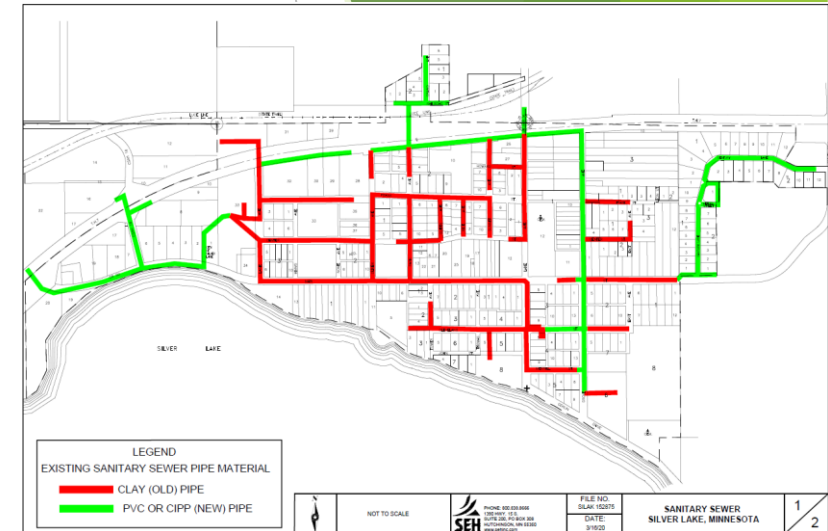
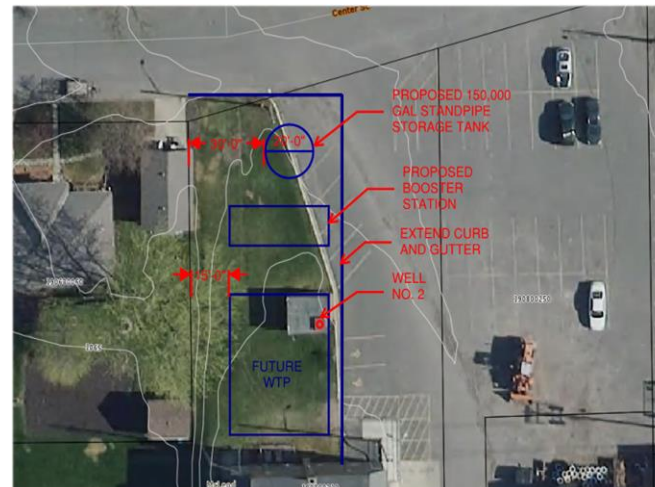
Infrastructure Improvement Project



What is the project?

Est. Cost \$30M - Bonding Ask \$15M

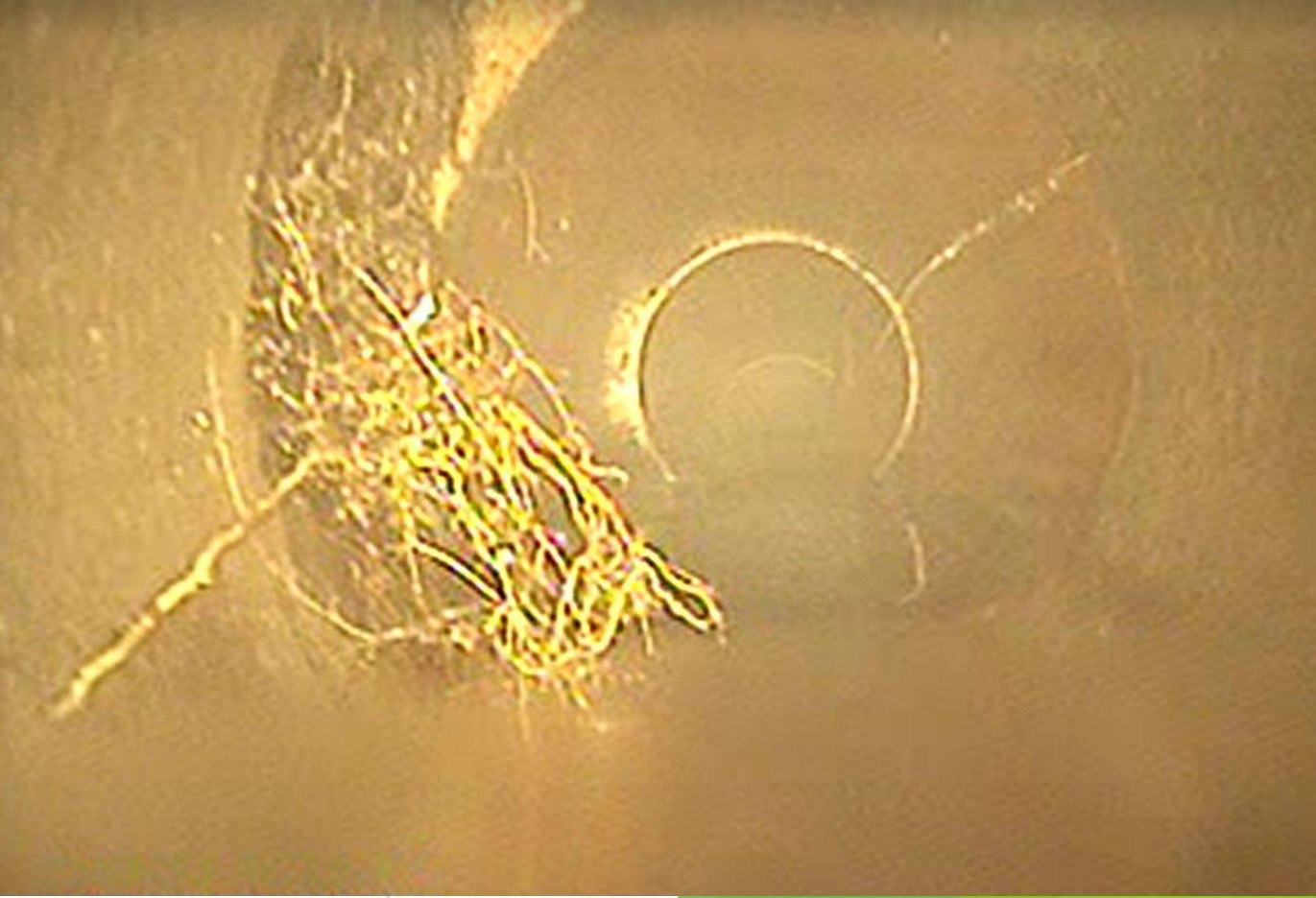
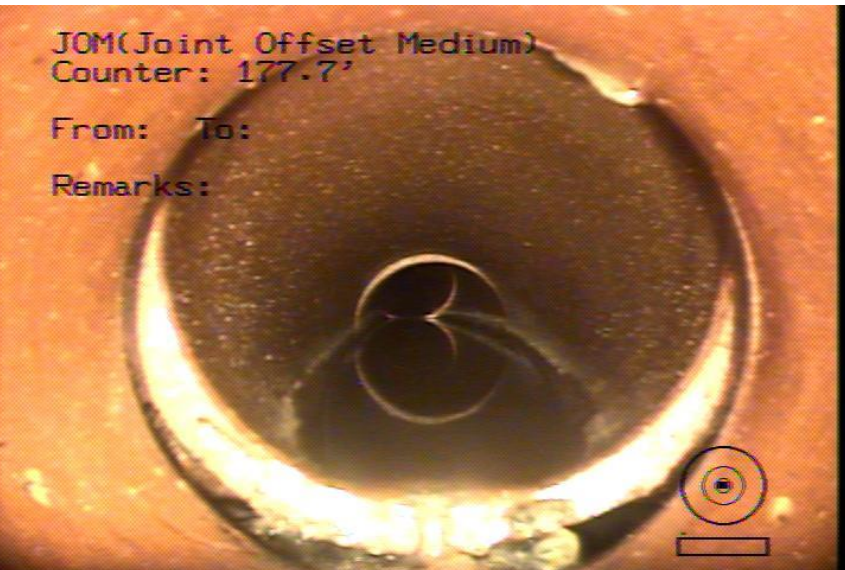
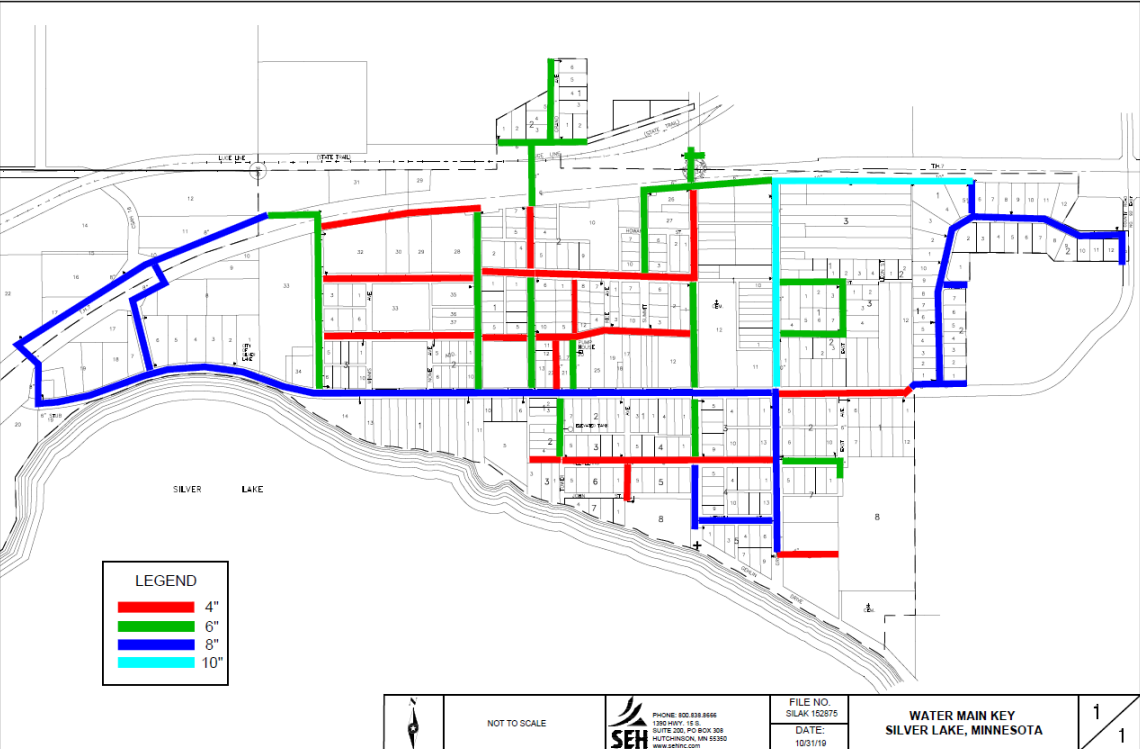
- Total reconstruction of sanitary sewer and water supply systems.
- Water Tower of inadequate size and needs updates.
- Water treatment facility.
- Wastewater Treatment Ponds expansion and update.
- Street rebuild due to complete infrastructure under streets.



Why are Infrastructure Improvements needed?

- Sanitary Sewer and Water supply systems have major deficiencies.
 - Infrastructure is 100 years old - lots of I/I issues.
- Water Tower of inadequate size and needs updates.
 - Water capacity issues - inadequate for fire controls and for business expansion.
- Water quality standard issues.
- Wastewater Treatment Ponds over capacity and need updates.
 - Additional capacity is needed for current operations/future expansion and future MPCA regulations.
- Reconstruction of streets due to aged infrastructure rebuild.

Sewer and Water Issues



Potential Funding Package

Project Phasing	Amount
Street and Utility (SUIP) -Wastewater \$2.7M -Water \$3.0M -Storm \$2.7M -City \$1.6M	\$10M
SUIP \$8.0M Lift Station \$1.0M	\$9.0M
SUIP \$3M Lining \$2M	\$5.0M
Water and Wastewater Related -Water Tank \$1.5M -Wastewater Lift Station \$0.5M -Treatment \$1.5M	\$6.0M
Total Project Cost	\$30M

Funding Package	Source
Rural Development Grant	City has applied for a grant.
Rural Development Loan	Remaining eligible costs. Spread over 39 years.
City Share/Loan Payments	Assessments -Applied per City Policy General obligation bonds (taxes) -Generally paid over 20 years Utility fees -Rates based on “affordability” standards Rural Development Community Facility Loans -Can cover some ineligible street costs State Bonding Request -Submitted for consideration in 2022 (\$15M)

Positive Outcomes

- ▶ Rebuild and modernize 100-year-old infrastructure water and sewer.
- ▶ Solve I/I issues.
- ▶ Drinking water will meet compliance standards of the Minnesota Department of Health for the health and safety of the population.
- ▶ Water tower will be sized correctly for fire protection.
- ▶ Normalized pressure for residential and business capacity.
- ▶ Wastewater treatment capacity sized right and meet future MPCA regulations.
- ▶ Allow for future housing and business expansion with new capacity.