



For over 100 years the Union Gospel Mission has served Northland neighbors in need with dignity and compassion - offering food, shelter, and life-saving supportive services.

## HOUSE FILE 3125

### Homeless Engagement Center in Duluth

**Requested Funding: \$8,856,000**

The new HRA/UGM building, located directly across the street from the St. Louis County Government Center, will feature a Mission Engagement Center, designed specifically to meet the needs of guests experiencing homelessness. The Mission Engagement Center will consist of:

- A commercial kitchen and dining hall
- Warming center space for guests
- Indoor and outdoor space for guests
- Free health service facilities
- Free laundry services
- Free clothing and hygiene resources
- Free summer food programming for kids
- Classrooms and offices

## ADDITIONAL INFORMATION

### Mission Heights Housing

Above the Engagement Center will be Mission Heights Housing - 40 units of permanent supportive housing. This will ensure guests are not just provided with housing, but connected to case management services to ensure residents success in maintaining their home.



## COMMUNITY NEED

### Homelessness

- From 2013-2023, St. Louis County experienced a 41% increase in overall homelessness and a 157% increase in chronic homelessness.
- 1,100 individuals utilized the Duluth warming center in 2023.
- 54% of Northland residents are experiencing a rent burden rate.

### Hunger

- 1 in 12 Northland adults are experiencing food insecurity.
- 1 in 9 Northland children go to bed hungry each night.



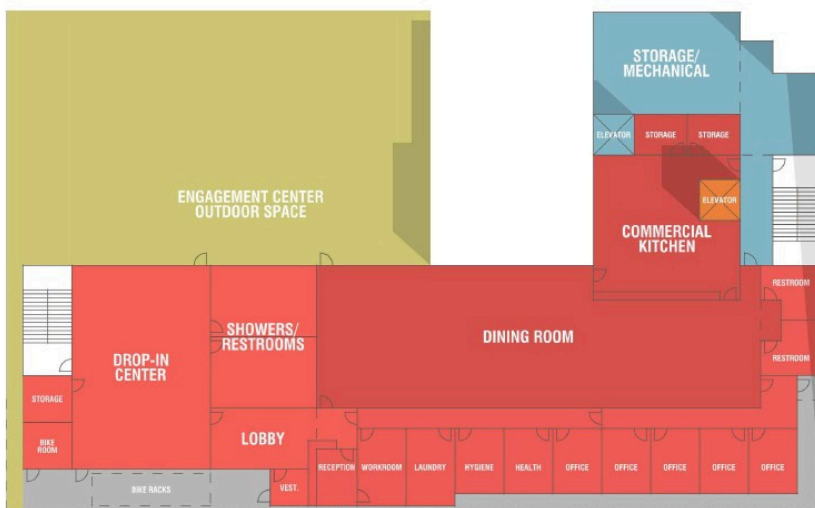
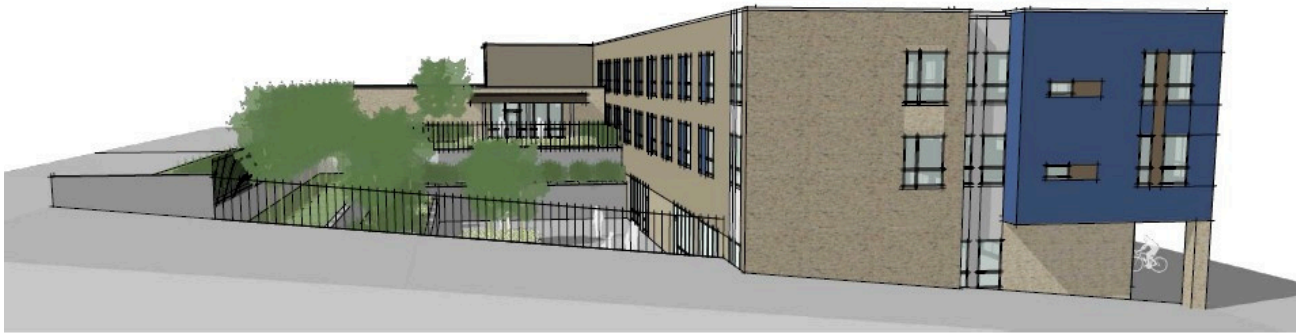
### Katie Hagglund

Union Gospel Mission Executive Director

"The homeless response system in the Northland is severely outdated. UGM's relocation is part of a community-wide plan to end unsheltered homelessness and provide people with dignified person-centered opportunities for long-term housing stability."

# New Home. Same Hope.

Successful funding for the Mission Engagement Center will help leverage \$15.6 million in funds from Housing Infrastructure Bonds.



## Partnerships

- Funding and development services from the Housing and Redevelopment Authority of Duluth, MN
- Funding and land from the City of Duluth
- Housing supports operational commitments from St. Louis County
- Broad support from local businesses, health care systems, and community leaders

## For More Information

Phone : (218) 390-8813

Email : [katie@duluth-ugm.org](mailto:katie@duluth-ugm.org)

Website : [duluth-ugm.org](http://duluth-ugm.org)