

# Phase II (HF 1533)

Capital Assistance Program

## Advanced Material Recycling Facility



Pope/Douglas  
Solid Waste Management  
(PDSWM)

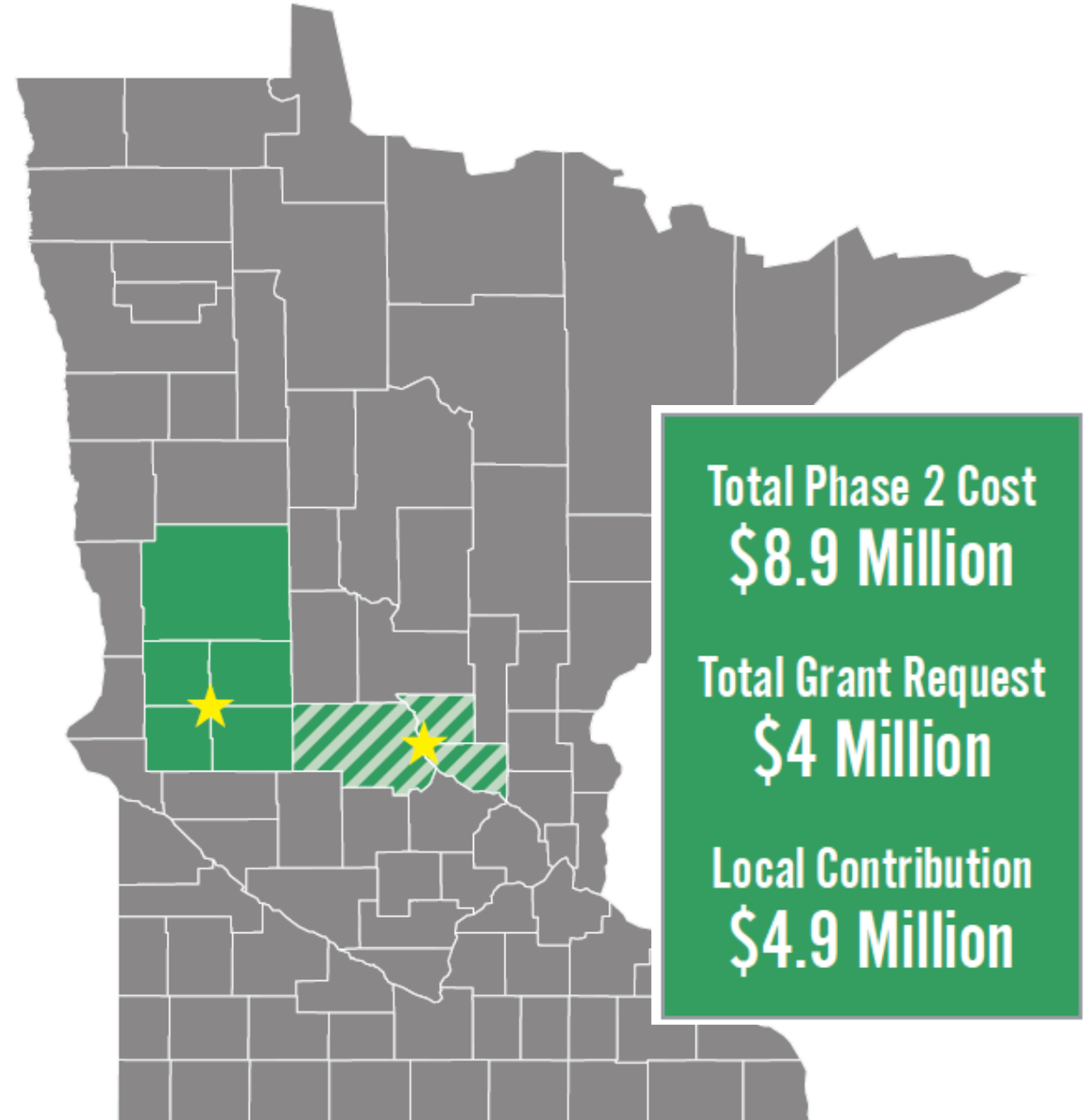
- Steve Vrchota, *Director*
- Nathan Reinbold, *Environmental Coordinator*

# Organics & Recycling

Regional Coordination  
to recover/recycle *more*  
and landfill *less*

## Project Partners

Pope/Douglas  
Grant  
Stevens  
Otter Tail  
Stearns  
Benton  
Sherburne



*Funded in 2020*

# Phase I: Thank You!

- Environmental Center (Household Hazardous Waste/Recycle/Education/Problem Materials)
- Regional Compost Facility  
(Glacial Ridge Compost Facility)
- Projects were highly rated by the MPCA
- Project was **split into 2 phases**  
(Phase I - funded) and 2021 (Phase II - current ask)

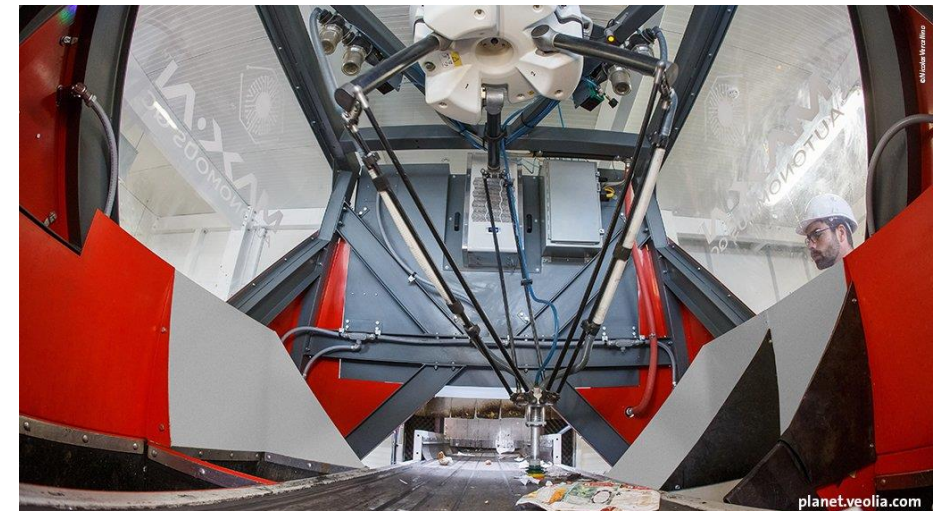
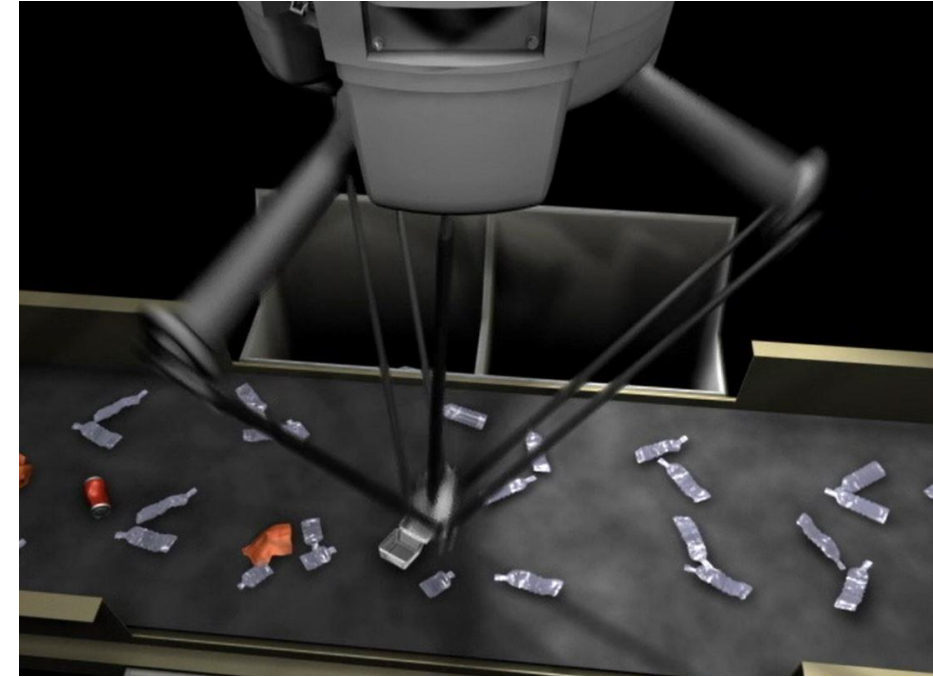
# Phase II: Project Scope

- Phase II is **highly rated** and **vett**ed by the MPCA
- Construct recycling/recovery & diversion facility
- Robotics and enhanced equipment will recover additional recyclables from garbage
- *'Second Chance'* recovery after curbside programs
- Design for diverting 8% of garbage as recycling (up from current 2.5% recovery)



# Phase II: Description

- Advanced Material Recovery Facility
  - Hybrid Material Recovery Facility able to switch between 'front-end' processing (removal of metals/plastic/OCC/problem items) and Single Sort Material Recovery Facility
  - Expanded Tip Floor - Existing floor was designed for 40% of current incoming MSW
  - More recovery, recycling, and diversion
  - Increase visitor, hauler, and employee safety



# Phase I & II: Site Plan

