

GREATER  MSP<sup>®</sup>

# Minnesota House Committee on Workforce & Economic Development

APRIL 15 2026

# GREATER MSP<sup>®</sup>

## MISSION | *WHAT*

The GREATER MSP Partnership accelerates economic growth, global competitiveness and inclusive opportunity for all in the Minneapolis-Saint Paul region.

## SECTORS | *WHO*



BUSINESS



UNIVERSITIES



LOCAL GOV'TS



FOUNDATIONS

## What top-10 growth can deliver for Minnesota:



Family / Household  
Income



Government Tax  
Revenues



Philanthropic  
Money



Education



Infrastructure

While robust economic growth does not guarantee these things, no state or region can achieve them without economic growth

# GREATER GROWTH

**Grows the Pie**

Expands tax base to support quality of life

**Top 10**

Defines success at the level of performance needed

**Good Jobs**

Creates jobs that build wealth, careers & mobility

**Real Solutions**

Produces solutions the nation & world need in health, food & more

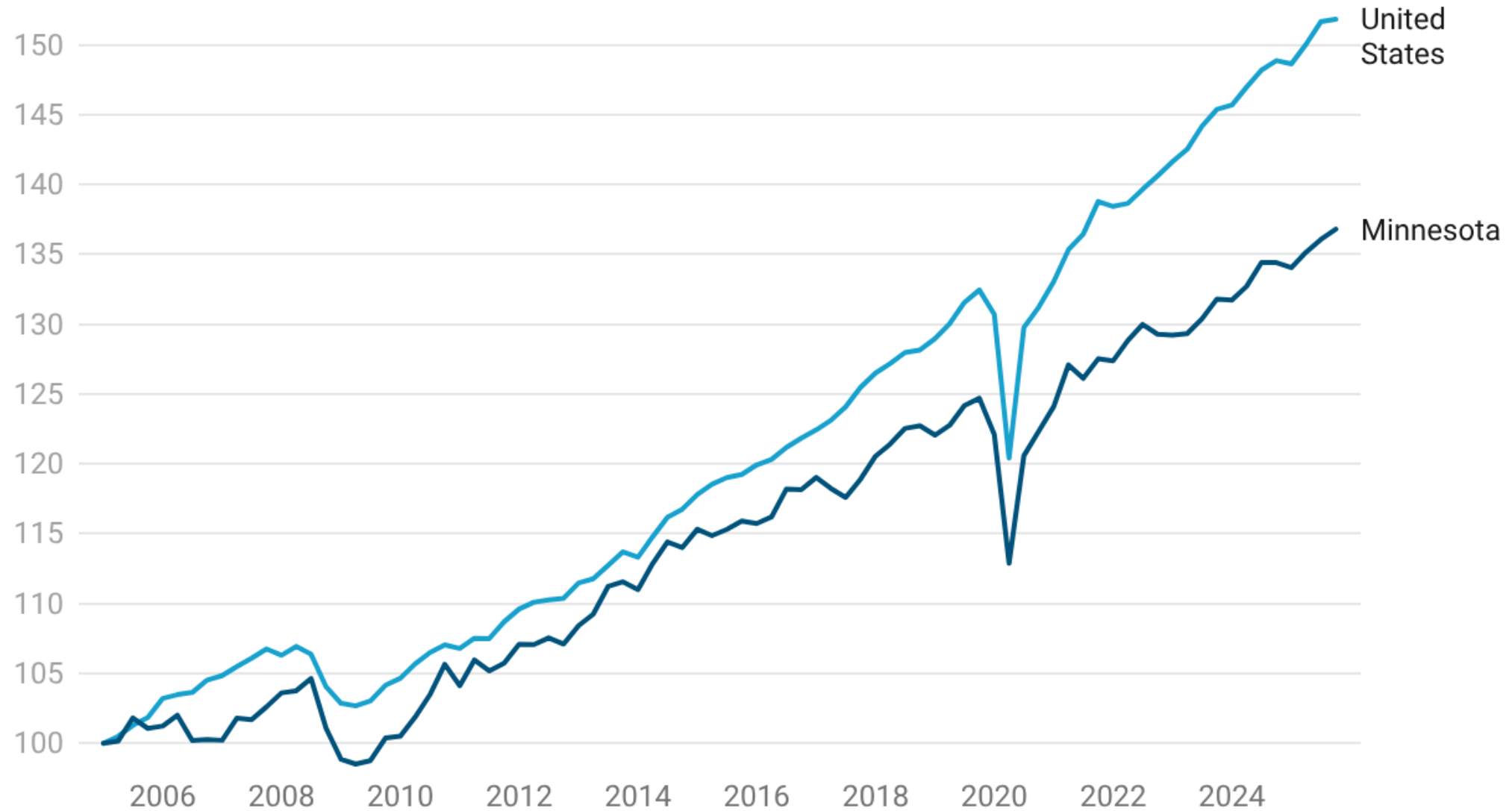
**Inclusive**

Increases access to opportunity for more communities

**Strategic**

Builds assets and strength in the areas we want to win

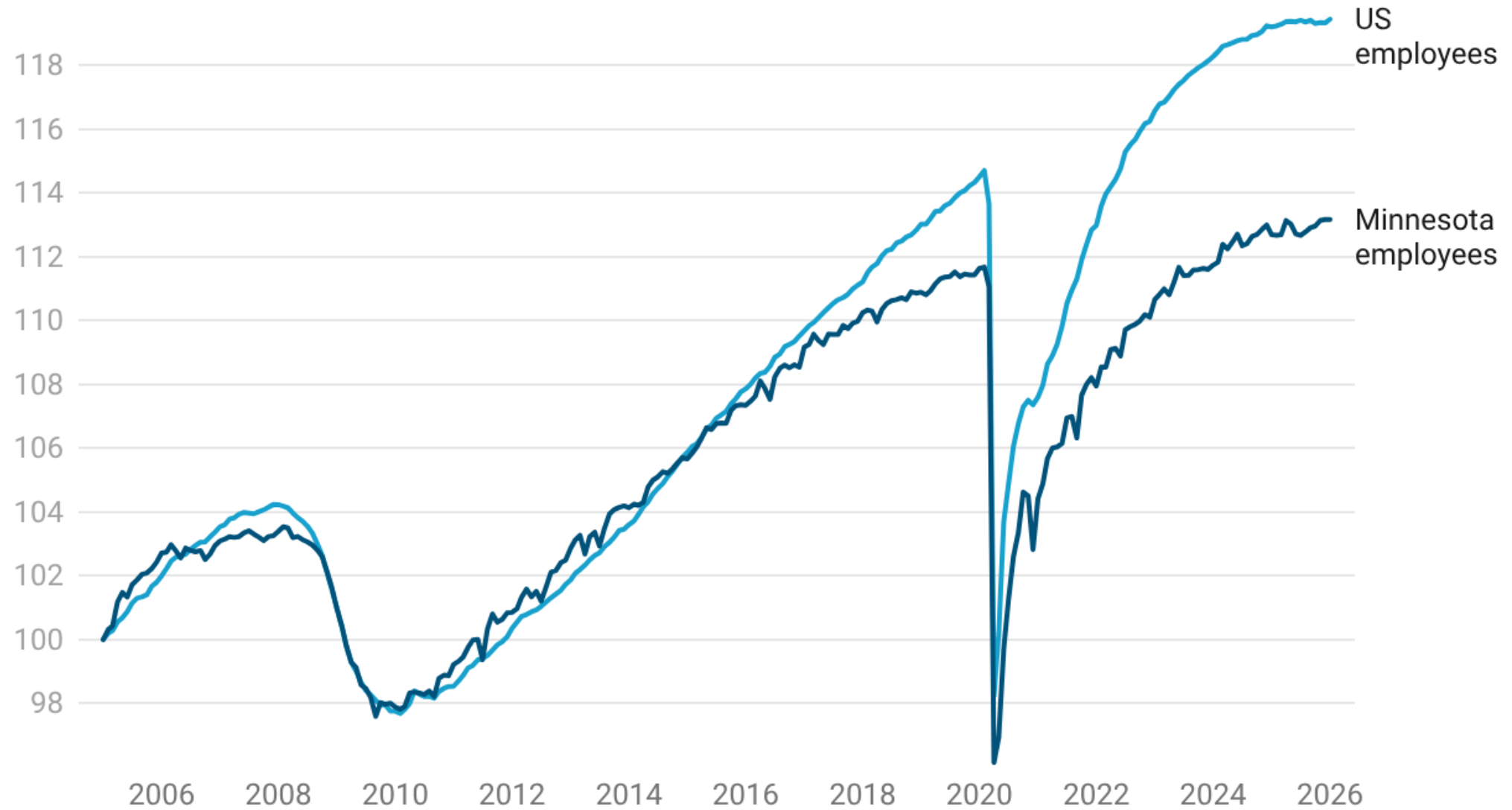
# Real Gross Domestic Product, US & Minnesota



All industries, Chained 2017 dollars, seasonally adjusted

Source: U.S. Bureau of Economic Analysis • Created with Datawrapper

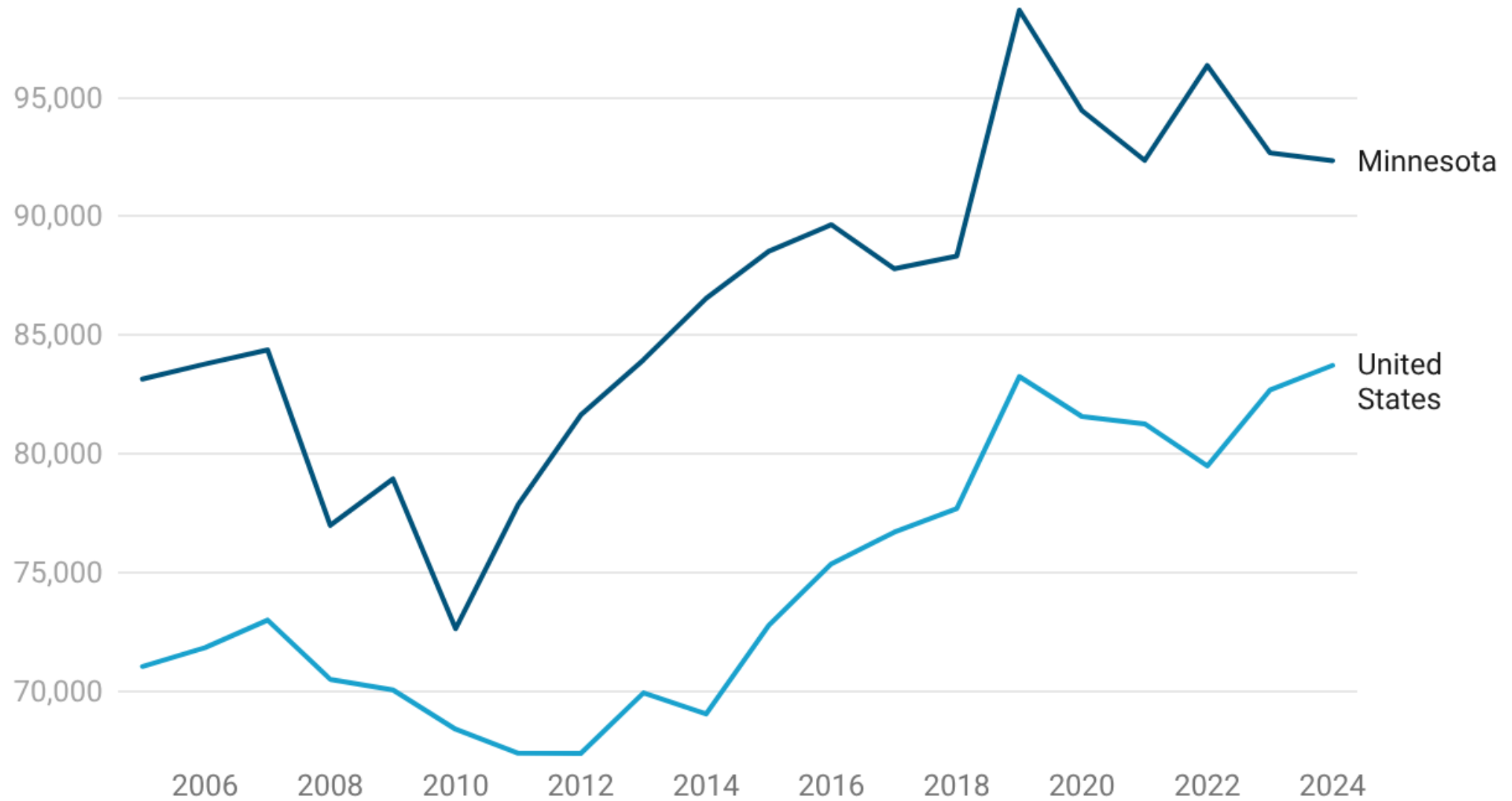
# Total nonfarm employment, US & Minnesota



*Employment indexed to January 2005 levels*

Source: US Bureau of Labor Statistics • Created with Datawrapper

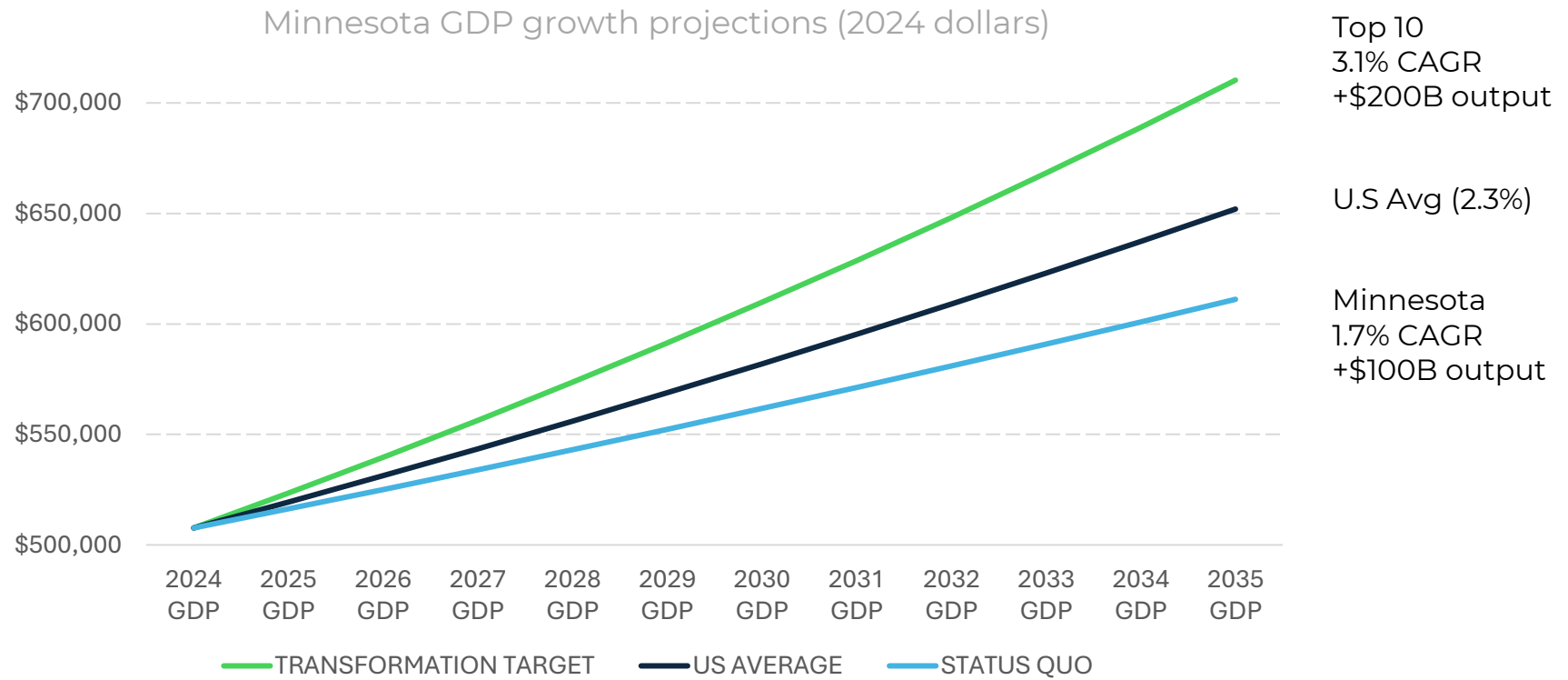
# Real median household income, US & Minnesota



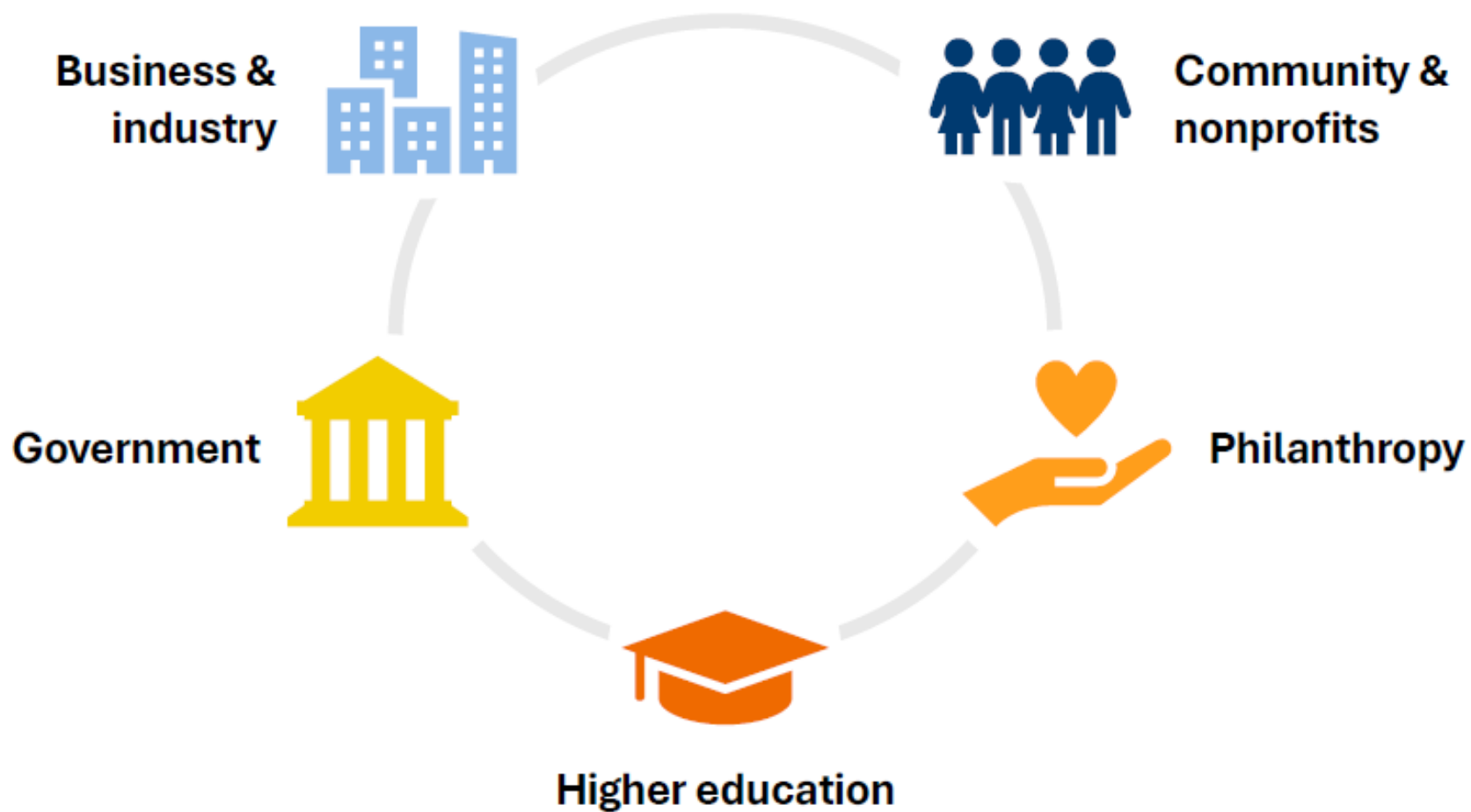
2024 C-CPI-U dollars (inflation adjusted)

Source: US Census Bureau • Created with Datawrapper

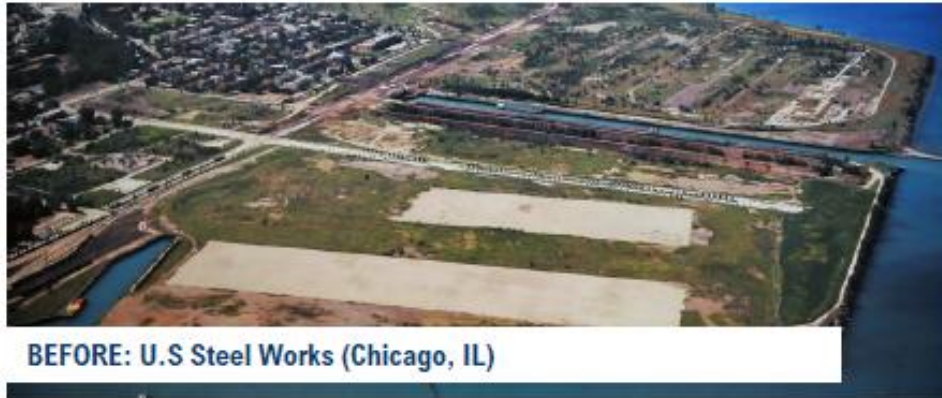
**ACHIEVING TOP-10:** 3.1% annual growth adds \$200B to the economy by 2035, a 40% expansion. This is double the economic growth than if MN were to grow at a status quo pace (1.7%)



# It takes a team to transform



# From disinvestment to co-investment



## Corporate

PsiQuantum, IBM, Diraq | \$1B+

## Federal government

DARPA | \$160M

## Philanthropy

Local philanthropies | <\$3M

## Local government

Chicago/Cook County | \$10M

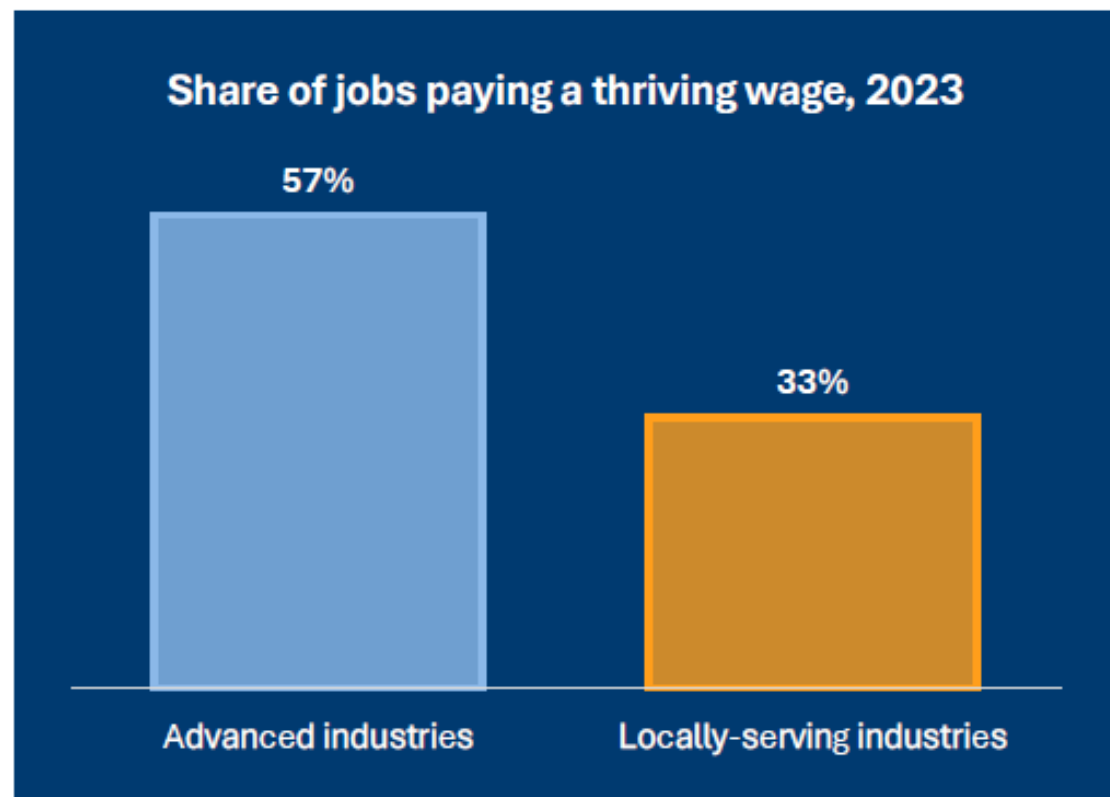
## State government

State of Illinois | \$500M

Co-Investment in quantum computing led by Innovate Illinois

# Regions must grow good jobs and address cost of living to generate economic mobility

## Good jobs



## Cost of living



Housing



Childcare



Transportation



Energy

Source: Brookings analysis of U.S. Census Bureau, Economic Policy Institute, University of Washington, and Lightcast data.

# BUILDING THE NEXT ECONOMY

A bold strategy for growth, innovation & opportunity that responds to global demand

## MED & HEALTH

Medical Tech  
Bio Tech  
Health & Wellness

## CLEAN INDUSTRY

Sustainable Aviation Fuel  
Bio-manufacturing  
Industrial Decarbonization  
Hydrogen hub and  
Clean energy

## NEXT GEN FOOD & AG

Protein Sustainability  
Soil Health  
Sustainable Plastics and  
Material Science

## DEEP TECH

Semiconductors &  
Microelectronics  
Cybersecurity  
Data Centers  
Hypersonics

## 21<sup>ST</sup> CENTURY HQ ECONOMY

AI Integration  
R&D facilities  
Professional Services  
Manufacturing Automation  
Global Markets

# HOW WE COMPETE AND WIN

