

FY26-27

Recommendations for the Clean Water Fund



John Barten, Chair

Paul Gardner, Administrator

651-757-2384

Paul.Gardner@state.mn.us

12 February 2025

House Legacy Finance Committee





CLEAN
WATER
LAND &
LEGACY
AMENDMENT

YOUR Clean Water
Fund AT WORK

Clean Water Council

- Created in 2006 after lawsuits and new TMDL requirements
- Minn. Stat. §114D.30 CLEAN WATER COUNCIL.
 - Subdivision 1. **Creation; duties.**
 - A Clean Water Council is created to advise on the administration and implementation of this [Clean Water Legacy Act], and foster coordination and cooperation as described in section 114D.20, subdivision 1.
- Submit recommendations to the Legislature by January 15 of odd-numbered year.
- 17 voting members appointed by Governor
- 11 non-voting members from agencies, UMN, Legislature



**CLEAN
WATER
LAND &
LEGACY
AMENDMENT**

**YOUR Clean Water
Fund AT WORK**

Clean Water Fund

- Council given role of recommending its use
- ~\$3 billion to be spent by 2034
- “May be spent only to protect, enhance, and restore water quality in lakes, rivers, and streams, to protect groundwater from degradation, and to protect drinking water sources.”
- “At least five percent of the clean water fund must be spent only to protect drinking water sources.”

Permitted Purposes in Statute (Minn. Stat. 114D.50)

- Testing waters, identifying impaired waters, establishing total maximum daily loads (TMDL), implementing restoration plans, and evaluation
- Prevent surface water from being impaired (“protection strategies”)
- Wastewater and stormwater grants and loans
- Prevent degradation of groundwater
- Support for agencies to do the above, including enhanced compliance and enforcement
- Clean Water Fund must SUPPLEMENT not SUPPLANT existing funding

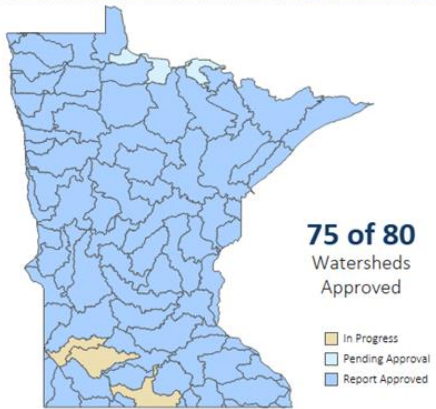
Agencies Involved

- Board of Water and Soil Resources
- Metropolitan Council
- MN Department of Agriculture
- MN Department of Health
- MN Department of Natural Resources
- MN Pollution Control Agency
- MN Public Facilities Authority
- University of Minnesota

Agencies meet regularly as Interagency Coordination Team (ICT)

Agencies send 2/3 of the Clean Water Fund outside state government

>50% of state FTEs are in Greater MN providing direct assistance to communities and landowners



CWF Strategy The Watershed Approach

- **Test waters for impairments**
- **Find source of the problem** (Monitoring, assessment & characterization)
- **Make a plan to protect it or fix it** (Watershed/Groundwater Restoration & Protection Strategies-WRAPS/GRAPS; One Watershed One Plan)
- **Fund the fix** (Implementation: Technical assistance, protection strategies, restoration projects, other)
- **Measure to see if the fix worked**

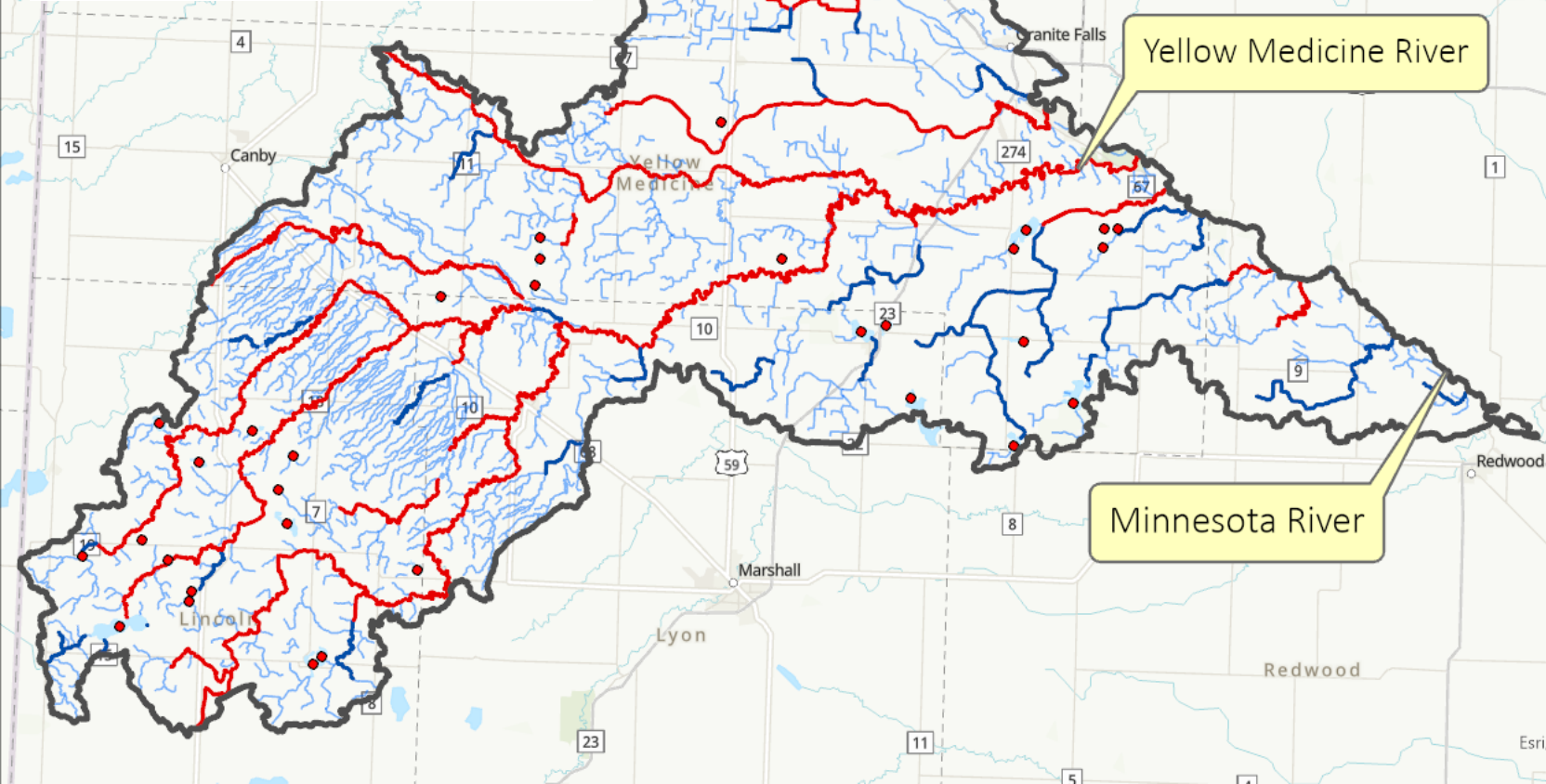
THIS TAKES A DECADE OR MORE ON A WATERSHED SCALE

We call it the Water Management Framework

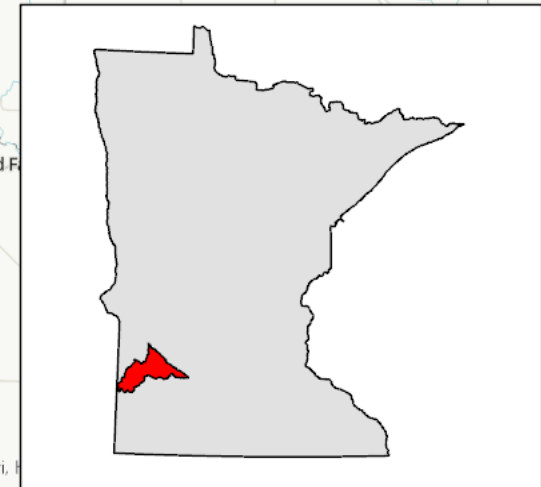


Example: Impaired waters in the Yellow Medicine River Watershed

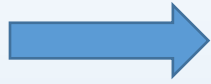
- 2010: Intensive monitoring & assessment starts
- 2013: Monitoring/assessment complete



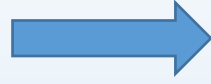
Pollutant or stressor	
Benthic macroinvertebrates bioassessments	34
Chlorpyrifos	1
Dissolved oxygen	1
Escherichia coli (E. coli)	21
Fecal coliform	10
Fish bioassessments	21
Mercury in fish tissue	18
Nutrients	10
PCBs in fish tissue	3
Total suspended solids (TSS)	1
Turbidity	12
	132



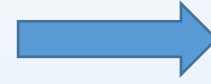
**DO THESE
PROJECTS**



By YEAR



**AND YOU
GET THESE
REDUCTIONS**



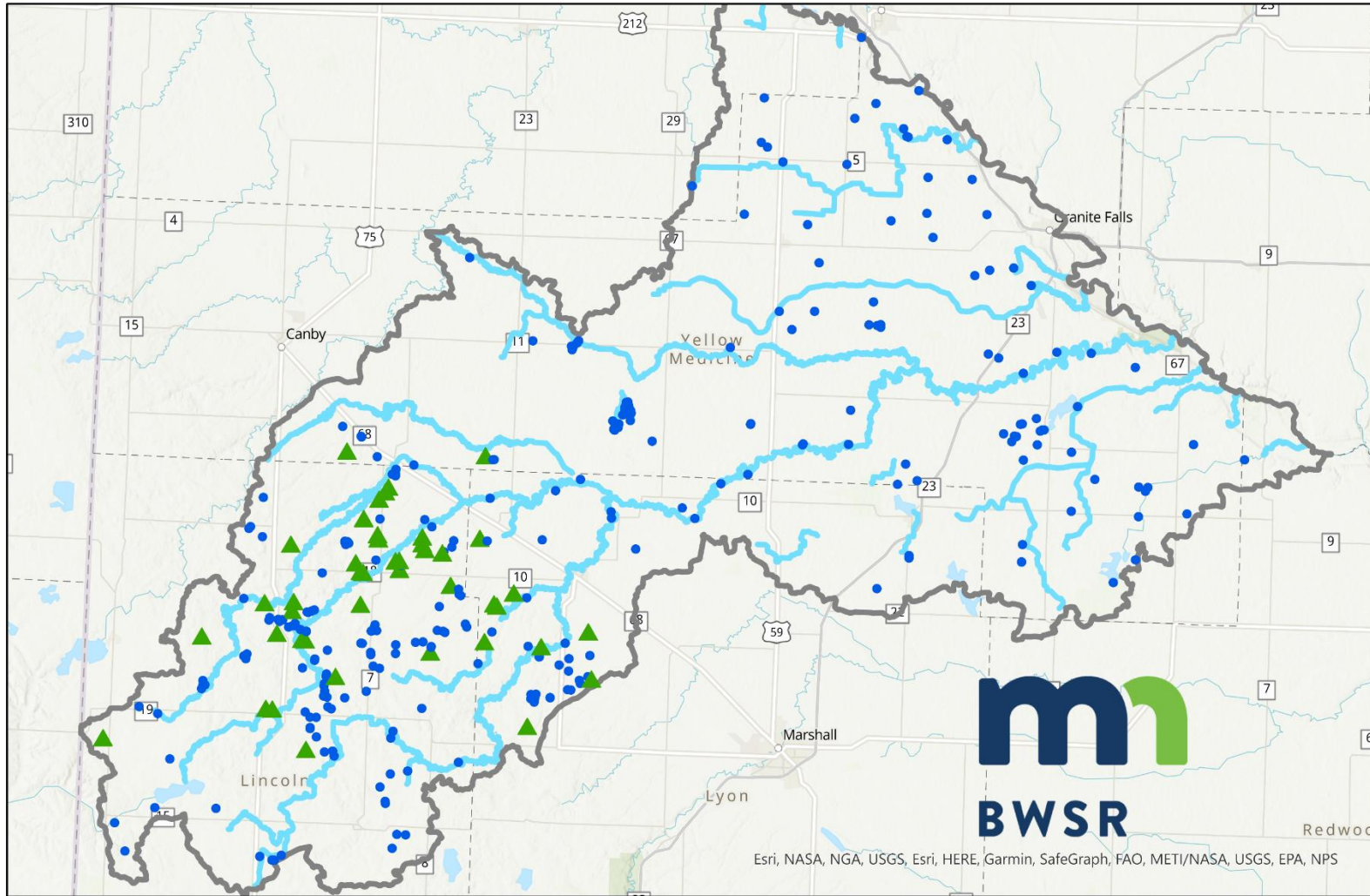
**AND IT WILL
COST**

Drainage	Treatment Group Type & Number of BMPs	Cost	Issue	Unit	Existing Conditions	Quantitative Measurable Goal				PTMAApp Scenario Reduction	5 year Load Reduction Goal	10 year Load Reduction Goal	10 yr. Progress towards Measurable Goal (%)
						Metric	Amount (%)*	Target Load Reduction	Year				
Drainage to Mississippi River	Storage (244) Filtration (78) Infiltration (3) Source Reduction (812)	\$6,437,605	Sediment	tons/yr	116,416	Annual Load (mass/yr.)	45	52,387	2025	14,488	7,244	14,488	28
			Nutrients: Total Nitrogen	lbs/yr	10,848	Annual Load (mass/yr.)	45	4,882	2040	112	56	112	2
			Nutrients: Total Phosphorus	lbs/yr	134	Annual Load (mass/yr.)	45	60	2025	12	6	12	20
			Excess Runoff: 2 Year	acre feet	71,177	2-Yr. Runoff Volume	25	17,794	2030	N/A	N/A	N/A	N/A
			Excess Runoff: 10 Year	acre feet	167,868	2-Yr. Runoff Volume	N/A	N/A	N/A	N/A	N/A	N/A	N/A
Drainage to Upper Iowa River	Storage (44) Filtration (15) Source Reduction (268)	\$1,410,038	Sediment	tons/yr	112,249	Annual Load (mass/yr.)	45	50,512	2025	27,776	13,888	27,776	55
			Nutrients: Total Nitrogen	lbs/yr	32,828	Annual Load (mass/yr.)	45	14,773	2040	3,285	1,642	3,285	22
			Nutrients: Total Phosphorus	lbs/yr	2,024	Annual Load (mass/yr.)	45	911	2025	360	180	360	40
			Excess Runoff: 2 Year	acre feet	7,781	2-Yr. Runoff Volume	25	1,945	2030	N/A	N/A	N/A	N/A
			Excess Runoff: 10 Year	acre feet	17,036	2-Yr. Runoff Volume	N/A	N/A	N/A	N/A	N/A	N/A	N/A

Excerpt from Root River "One Watershed One Plan"

Yellow Medicine River Watershed Planning Area

Clean Water Funded Best Management Practices



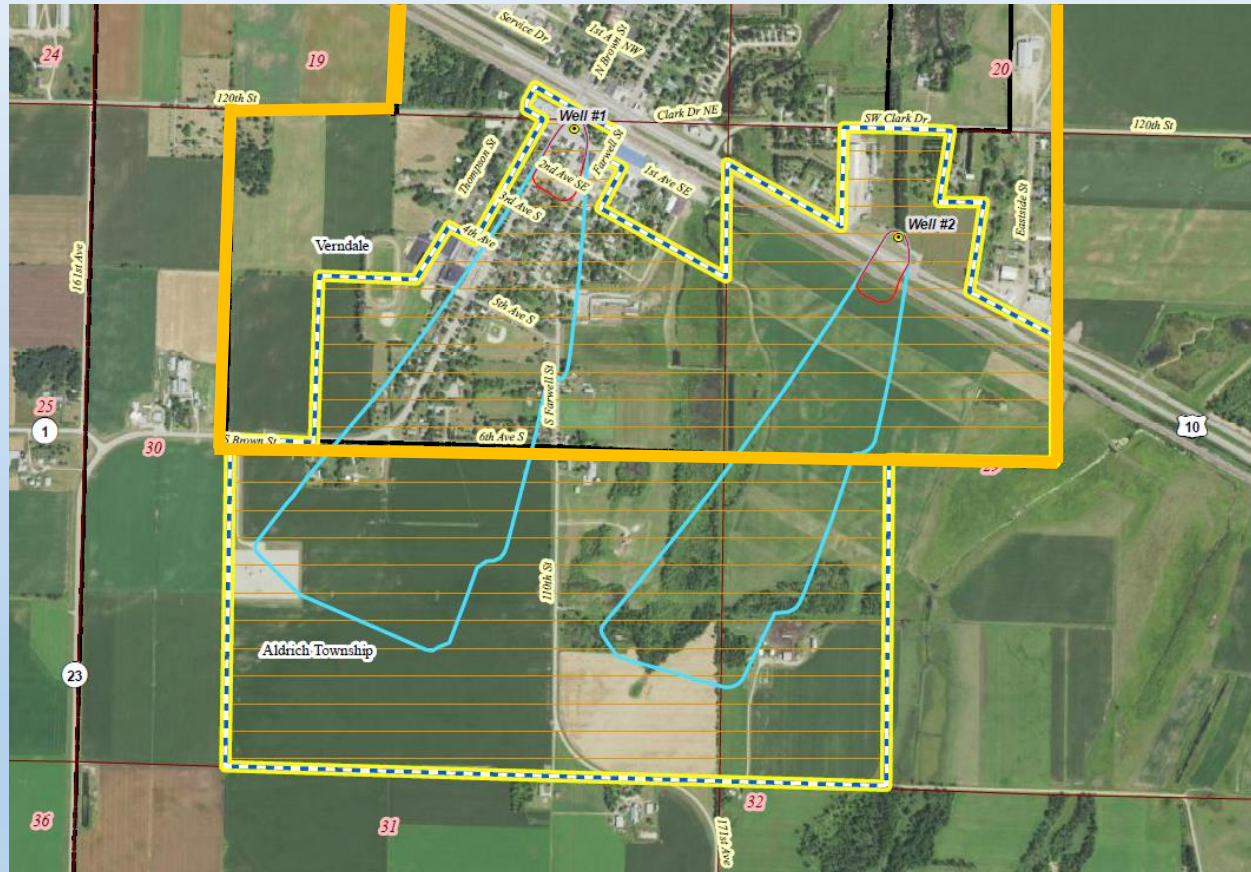
Yellow Medicine 1W1P Boundary
 • CWF
 ▲ CWF WBIF Only
 — YM Impaired Streams

Practice Type	Total Number of Activities*
Septic System Improvement	8
Alternative Tile Intake - Dense Pattern Tiling	33
Alternative Tile Intake - Gravel Inlet	76
Alternative Tile Intake - Other Blind Intake	5
Critical Area Planting	2
Well Decommissioning	57
Diversion	1
Filter Strip	45
Grade Stabilization Structure	2
Grassed Waterway and Swales	17
Streambank and Shoreline Protection	1
Structure for Water Control	1
Denitrifying Bioreactor	1
Water and Sediment Control Basin	69
Wetland Restoration	1
Wetland Creation	1
Grand Total	320

**Note: Number of practices maybe greater as treatment trains of BMPs grouped together*

- 2017: One Watershed One Plan Comprehensive Watershed Management Plan Complete

Verndale (Wadena Co) Drinking Water Supply Management Area (DWSMA)



10 year time of travel



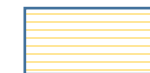
Emergency
Response Area



Wellhead
Protection
Area

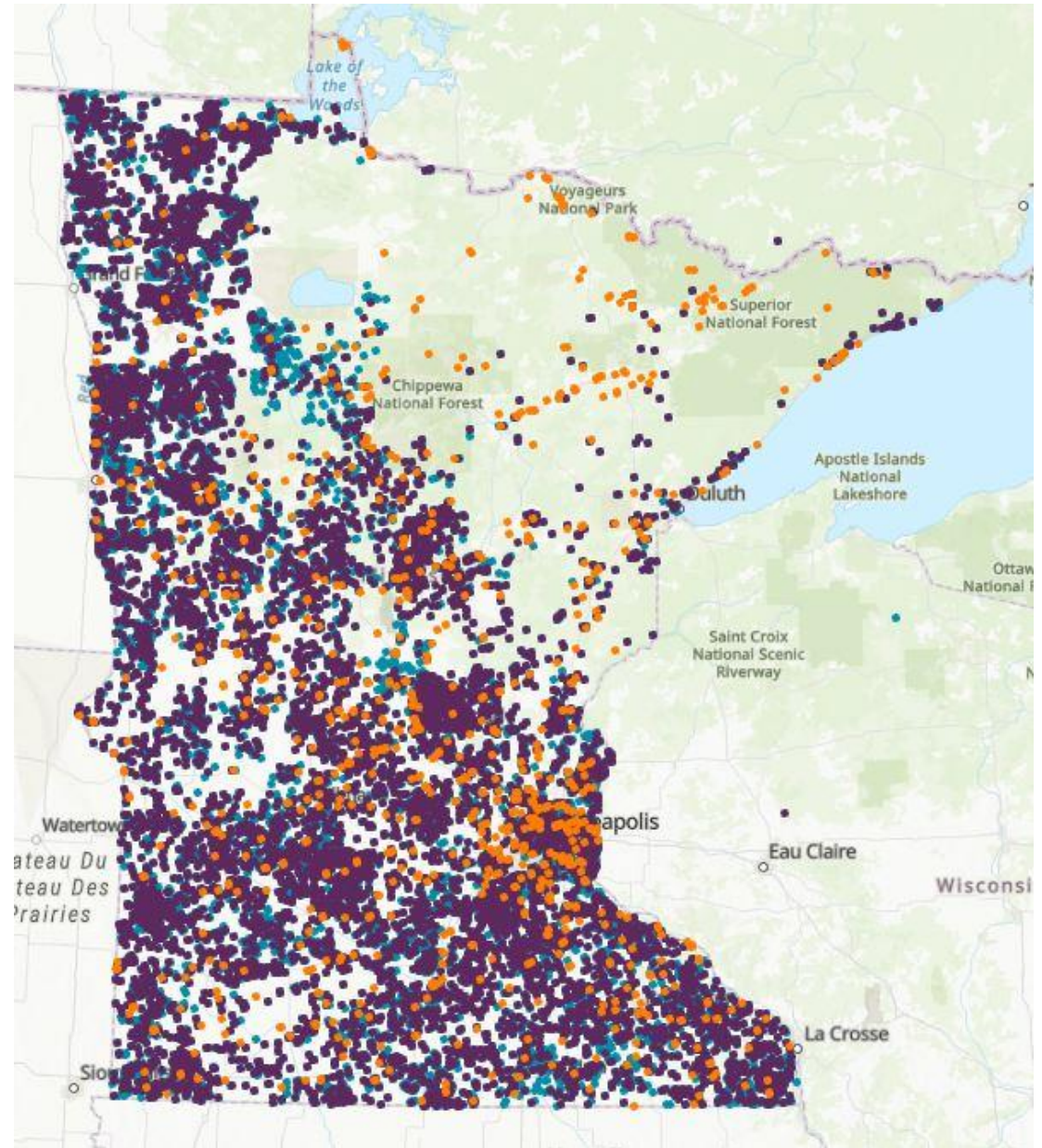


DWSMA



High Risk

Clean Water Funds Are Used Statewide



The Clean Water Fund & Disparities

- Protection activities that keep water service affordable (MDH)
 - Planning support for under-sewered communities (Public Facilities Authority)
 - Water Legacy Partner Grants open to tribal governments and NGOs (BWSR)
 - Coordination with tribal governments on surface water monitoring
- Leak detection & toilet/fixture replacement in designated areas of concentrated poverty (ACP) in St. Paul (Met Council)
 - Assistance to low-income households to replace septic system (MPCA)
 - Free private well test for five contaminants over 10 years (MDH)

Clean Water Council Policy Platform

- Council acknowledges that the CWF can't fix everything
- Policy statements help assemble ideas scattered throughout in state government to one place
- Fulfills statute to “foster coordination and cooperation”
- We have statements on
 - Chloride
 - Drinking water source protection
 - Underground utilities
 - Drainage
 - PFAS
 - Pharmaceutical product stewardship

Highlights of FY26-27 Recommendations



\$310 million in recommendations

Expand What Works for Bigger Impact



- More “shovel-ready” projects (BWSR) with Watershed-Based Implementation Funding
- Strong support for continuous living cover and soil health (MDA/BWSR)
- Increased support for private well users (MDH)
- Lake Superior Basin support for SWCDs (MPCA)
- Policy statements on drainage and protecting public and private wells
- Completion of One Watershed One Plan (BWSR)



Thank you!

