

# African Swine Fever & Highly Pathogenic Avian Influenza

---

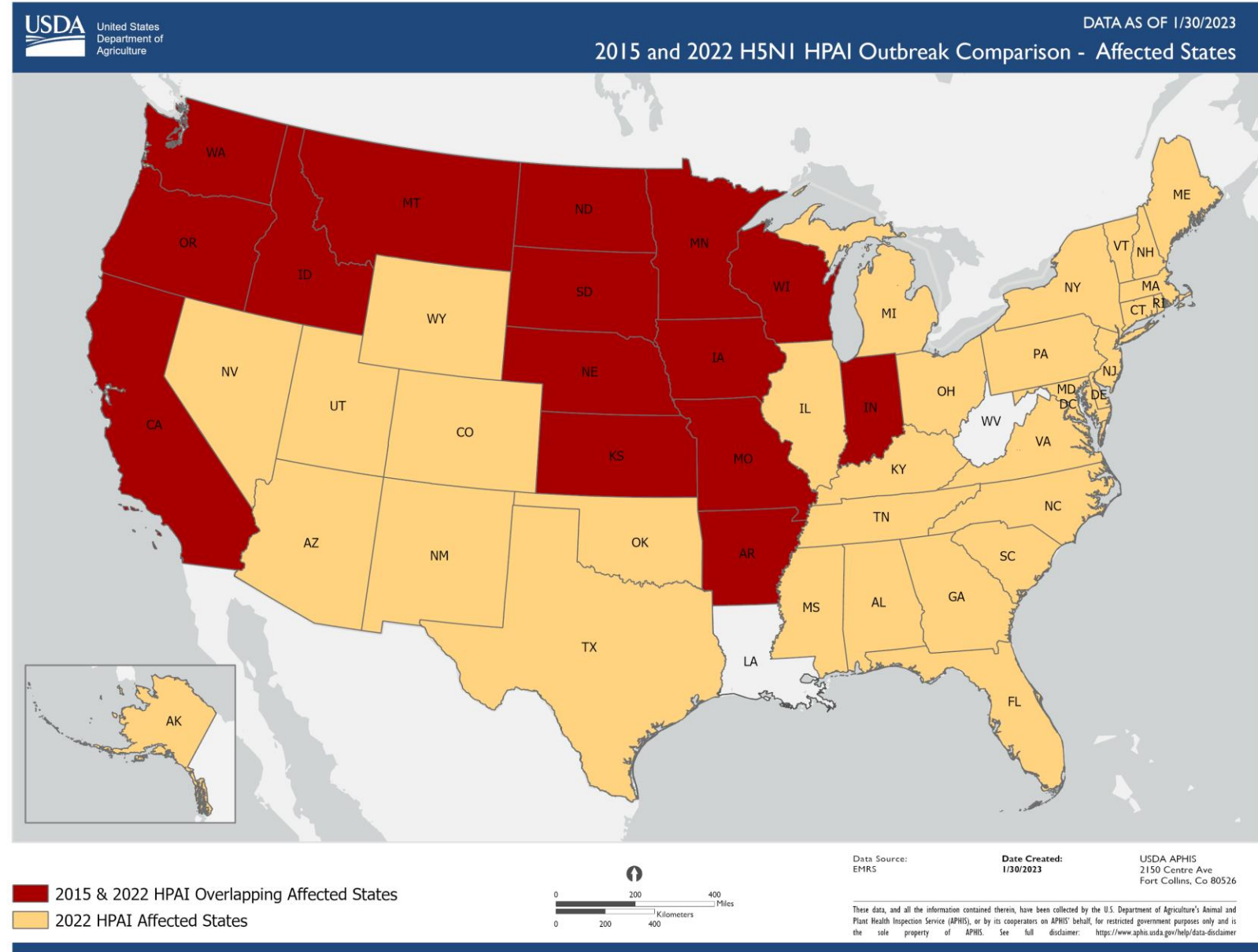
Stephan L. Schaeffbauer DVM, MPH  
Area Veterinarian in Charge – MN  
February 2023



# Highly Pathogenic Avian Influenza

## **2022/23** – Detection in Commercial and Backyard Flocks

- 748 Confirmed flocks
- 47 affected states
- 58.2 million birds affected

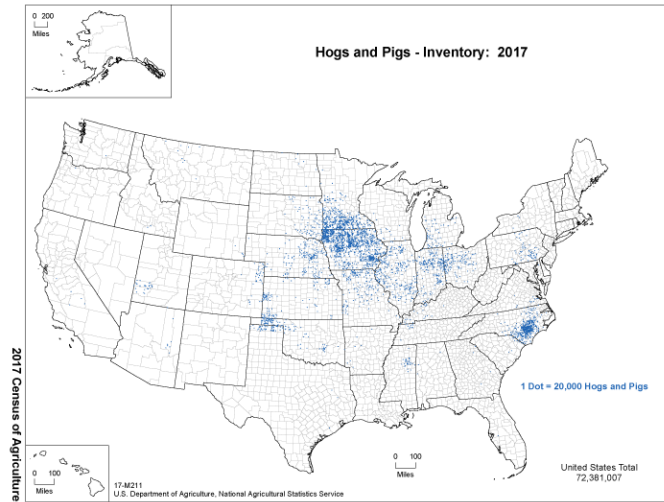


# Federal Response Cost – Minnesota

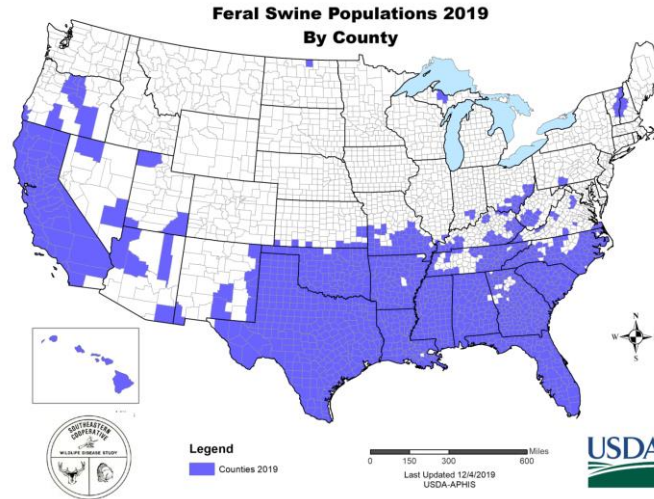
- USDA APHIS committed nearly \$115 million to support Minnesota's HPAI response.
  - \$93.2 million in indemnity
  - \$16.9 million for depopulation, disposal and virus elimination activities
  - \$3.2 million in contracts and agreements
  - \$1.6 million for support personnel and associated field costs
- USDA APHIS paid \$67 million in indemnity during Minnesota's 2015



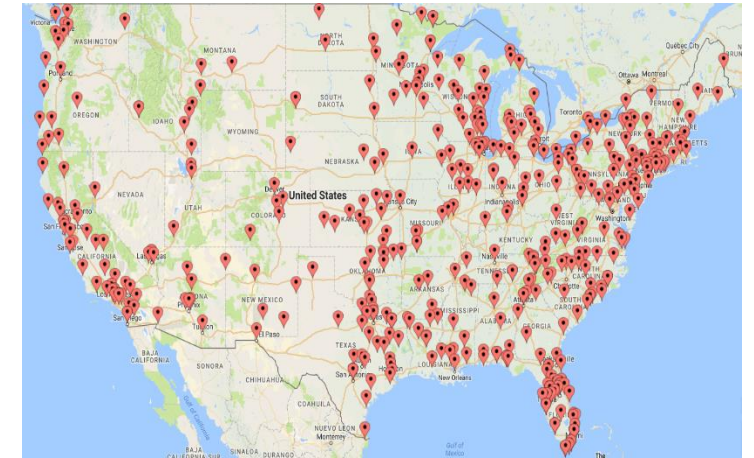
## SWINE DEMOGRAPHICS



## DOMESTIC SWINE



# FERAL SWINE



## ZOOS

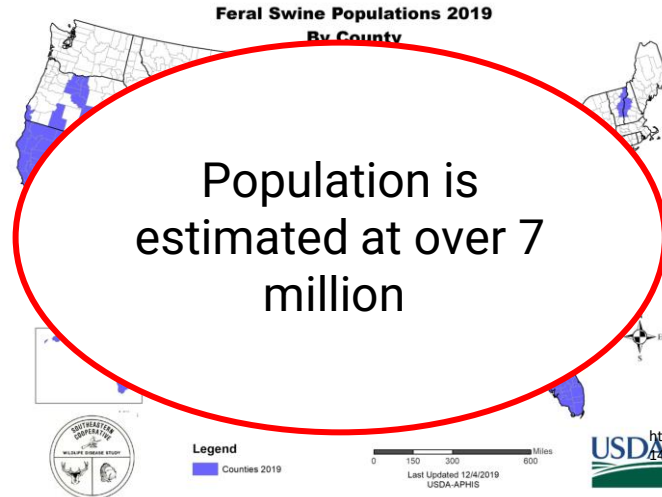




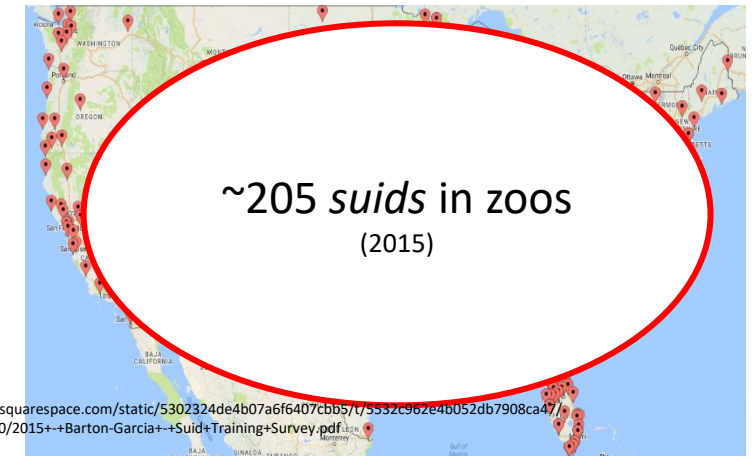
## SWINE DEMOGRAPHICS



DOMESTIC SWINE



FERAL SWINE




ZOOS





***“ASF POSES NO PUBLIC HEALTH THREAT OR FOOD SAFETY CONCERN”***

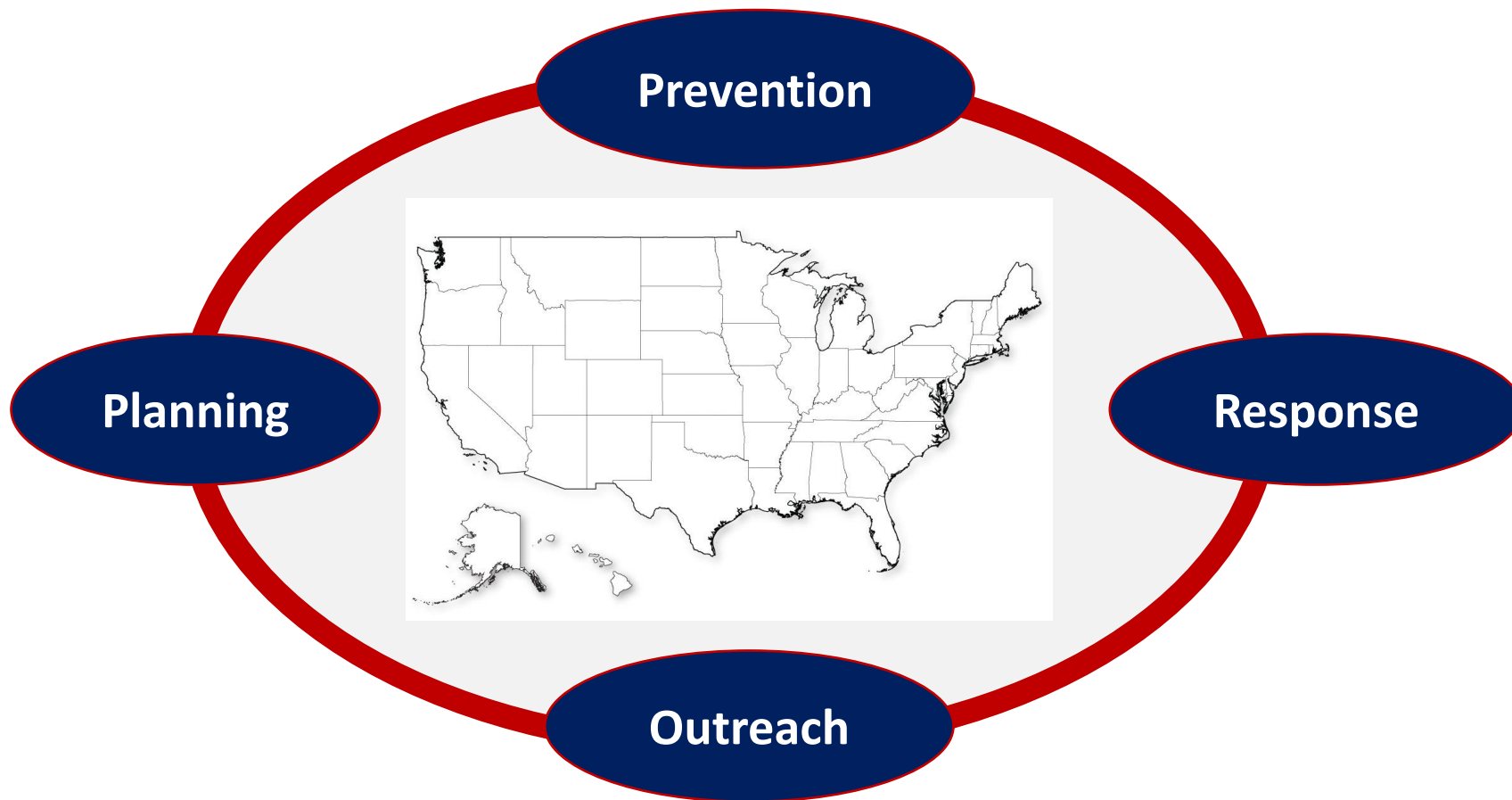
A 3D rendering of a globe, tilted on its axis. The Americas are visible in the foreground, with North America at the top and South America below it. The oceans are a deep blue, and the landmasses are a light green. The globe is centered in the background of the slide.

**African swine fever threatens  
US\$150-billion global pig industry**



# USDA and African Swine Fever

## *Protecting Our National Herd*



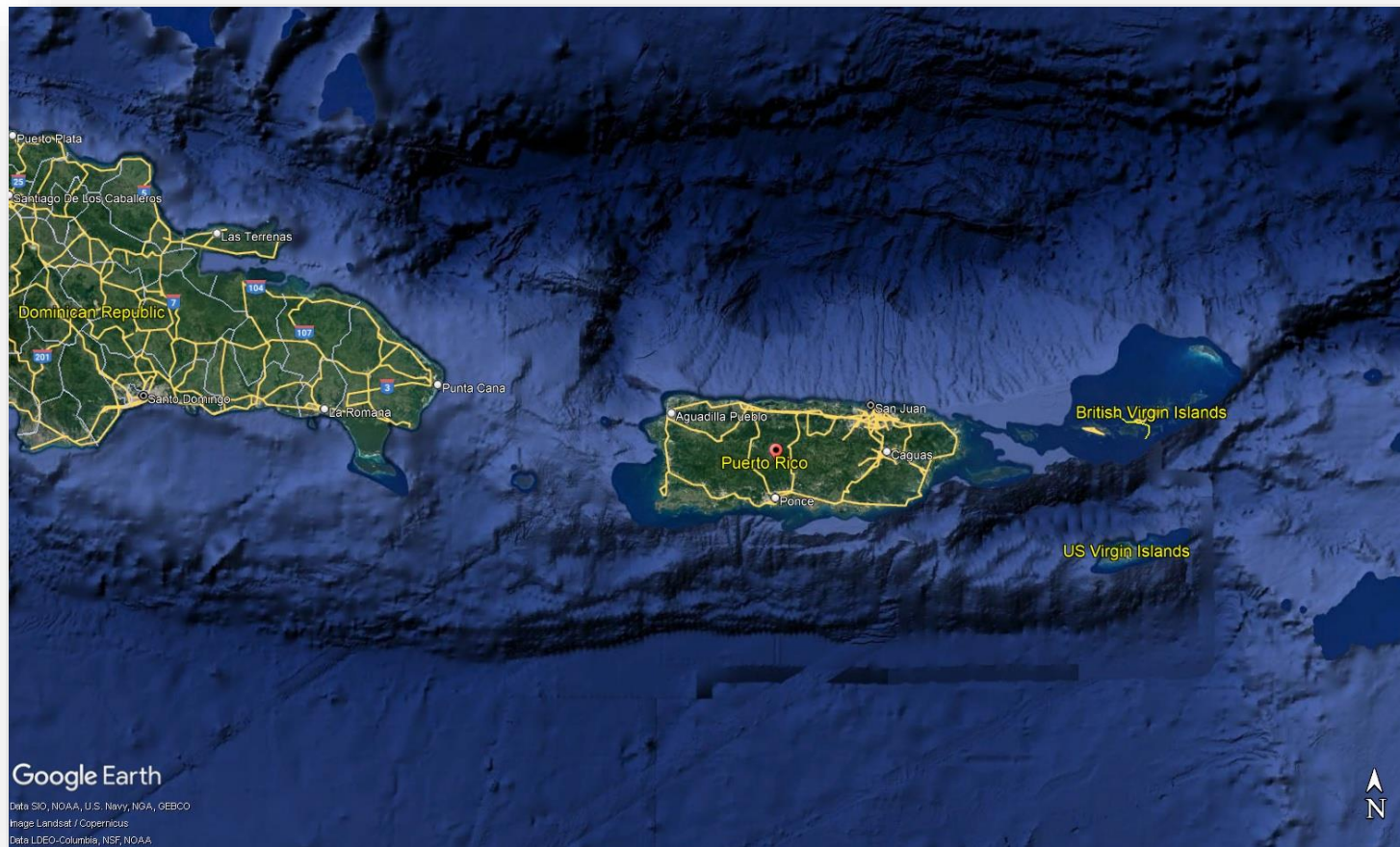


# Protection Zone for Puerto Rico and US Virgin Islands

Protection Zone established 9/17/2021

Prohibits movement of:

- ✓ Live swine
- ✓ Swine Germplasm, products, and byproducts





## Illegal Boat Landings (IBL) in Puerto Rico from Haiti and Dominican Republic

- Boat landing inspections
- Part of a Comprehensive Integrated Surveillance program that reduces the chances of introduction of animal diseases & pests.

### **IBL Protocol**

1. IBL notification and Craft Inspection
2. Disposal of Ag products
3. IBL Report and Documentation
4. 3 km prem surveillance and weekly inspection
5. Sample surveillance of swine



# ASF Prevention: Barriers to Entry

- **INTERNAL:**

- **Swine Health Protection Act**
  - Garbage feeding restrictions
- **Ethnic Markets**



- **EXTERNAL:**

- **Import Restrictions**
  - Live swine & products derived from swine
  - International garbage restrictions
- **Passenger & Commercial Screening, Confiscation/Fines**
  - Partnering with CBP



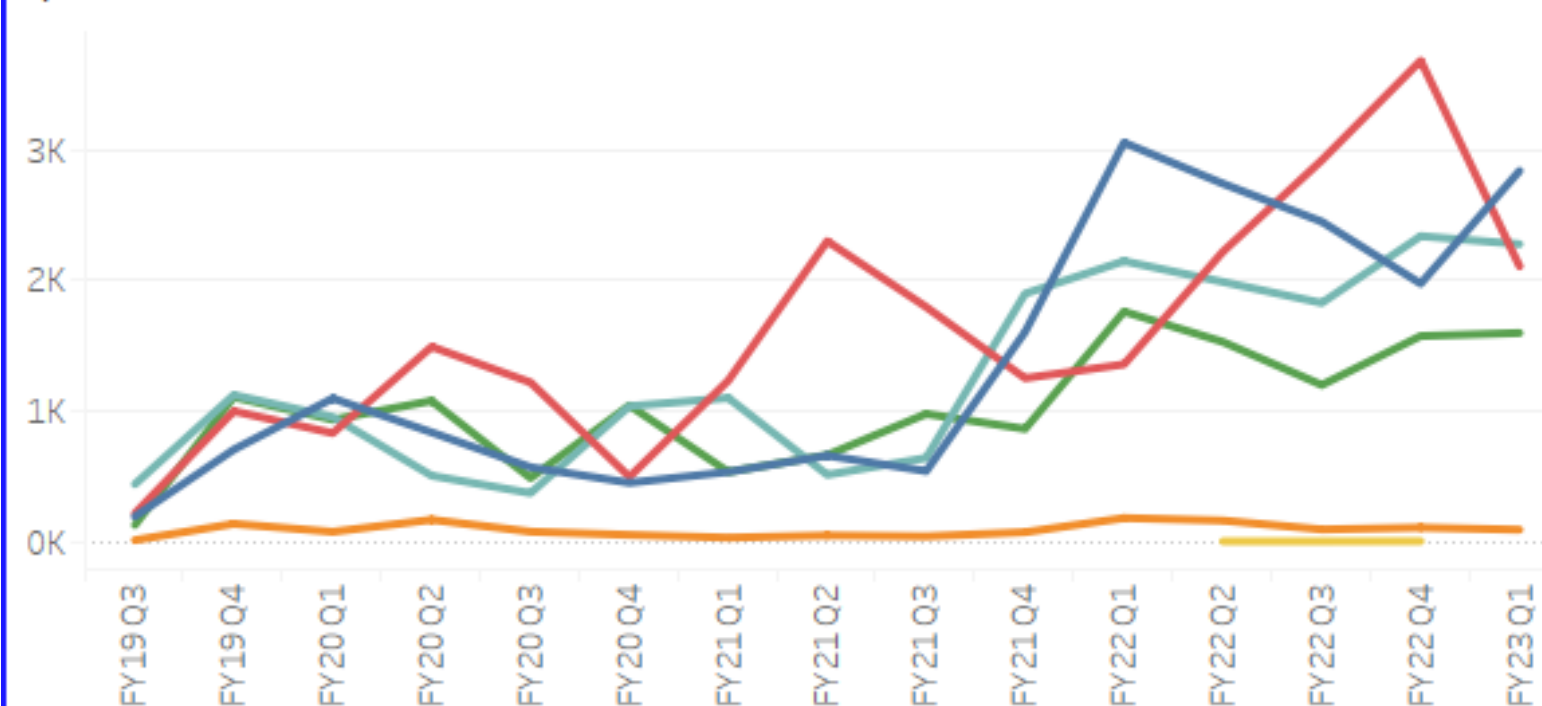


- **Currently Free:** ASF
- **Swine Hemorrhagic Diseases Targeted Surveillance**
  - Targets the following swine populations:
    - Sick pigs submitted to a veterinary diagnostic laboratory
    - Pigs condemned at slaughter by the FSIS
      - ...in addition, sick or dead pigs at aggregation points
    - Swine in high-risk herds
      - waste-feeding
      - exposure to feral swine
    - Feral swine as a part of a Foreign Animal Disease Investigation (FADI)
- Global Surveillance
- Scientific analysis at USDA's Center for Epidemiology & Animal Health (CEAH)





## Specimens Collected



Dual ASFv/CSFv active surveillance specimens collected: 49,921

CSFv active surveillance specimens collected: 30,860

Note: Feral swine samples were only tested CSF through July 2021.

- Diagnostic Labs
- FAD Investigation
- Feral
- Higher Risk
- Slaughter/Aggregation

## Surveillance “Streams”

- Sick pig samples from Veterinary Labs
- Feral Swine
- High risk samples (Garbage Feeding)
- Slaughter/Aggregation
- Foreign Animal Disease Investigations



Thank you