

2025 Inflow and infiltration grant program

Protecting health, homes, and environment

Governor Walz recommends **\$4.6 million** in general obligation bonds for grants for cities to repair sewer pipes that connect to the regional wastewater system. This grant program traditionally covers up to 50% of the inflow and infiltration repairs of a project's cost.

BENEFITING COMMUNITIES

Protecting public and environmental health by preventing sewer overflows to basements and waterways.

Allowing our economy to grow and prosper without the cost of building larger infrastructure.

Saving money by reducing the amount of water that needs to be transported and treated.

INVESTING IN INFLOW AND INFILTRATION REPAIRS

Since 2004, the Met Council's inflow and infiltration program has benefited from local, regional, and state investments to reduce clear water's impact on the system. Many of those dollars have gone to improve pipes maintained by a city or township, or to the regional sewer interceptor system.

- Deferred an estimated \$1 billion in capacity improvements.
- Allows the existing system to serve the anticipated regional growth — estimated 8% population growth between 2020 and 2030.
- Helps keep the Met Council's wastewater rates competitive — about 35% below the national average of peer agencies.

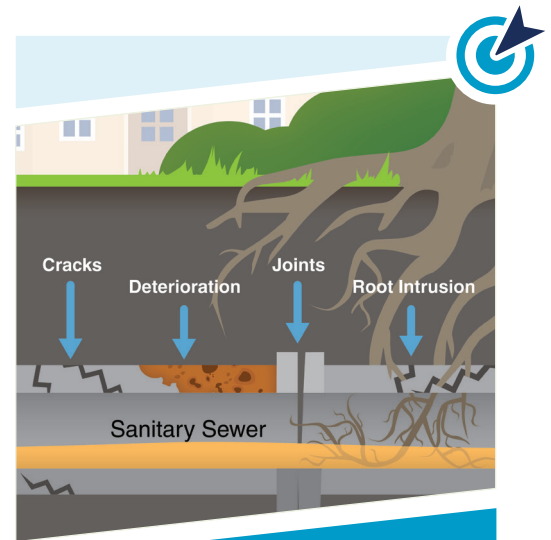
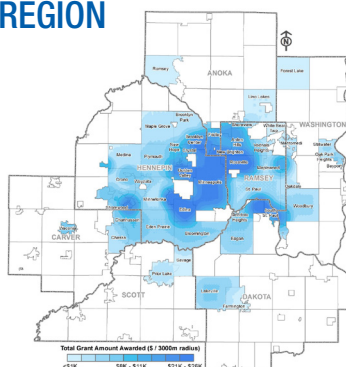
GRANTS INVESTED ACROSS THE REGION

State bonding grant allocations

2010-2020

\$24.25 MILLION

The Met Council is also allocating an additional \$12 million in state bonds from the 2023 legislative session.

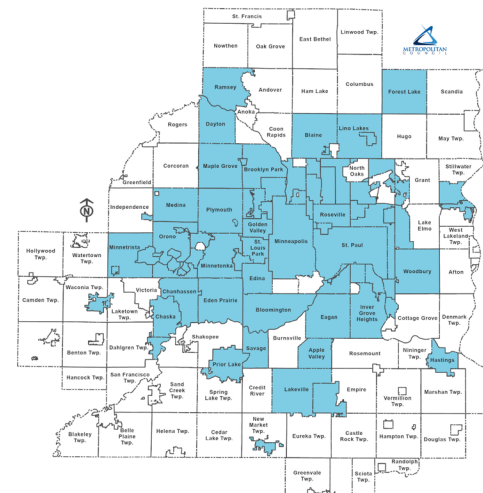


KEEPING CLEAR WATER OUT OF WASTEWATER

When pipes in the local wastewater collection system experience the cracks and deterioration that come with age, or when roots break through the pipes, that allows stormwater and groundwater into the system. That water is called inflow and infiltration. When it overloads the system, it can cause costly sewer backups into homes and buildings, or sewer overflows into rivers and lakes.

COMMUNITIES IMPACTED BY INFLOW AND INFILTRATION

Apple Valley	Hastings	North St. Paul
Arden Hills	Hopkins	Oak Park Heights
Bayport	Inver Grove Heights	Oakdale
Birchwood	Lakeville	Orono
Blaine	Lauderdale	Osseo
Bloomington	Lexington	Plymouth
Brooklyn Center	Lilydale	Prior Lake
Brooklyn Park	Lino Lakes	Ramsey
Carver	Little Canada	Robbinsdale
Centerville	Long Lake	Roseville
Chanhassen	Mahtomedi	Savage
Chaska	Maple Grove	Shoreview
Columbia Heights	Maple Plain	Shorewood
Crystal	Maplewood	South St. Paul
Dayton	Medicine Lake	Spring Park
Deephaven	Medina	St. Anthony
Eagan	Mendota	St. Bonifacius
Eden Prairie	Mendota Heights	St. Louis Park
Edina	Minneapolis	St. Paul
Elko-New Market	Minnetonka	St. Paul Park
Excelsior	Minnetonka Beach	Stillwater
Falcon Heights	Minnetrista	Spring Park
Farmington	Mound	Tonka Bay
Forest Lake	Mounds View	Vadnais Heights
Fridley	New Brighton	Waconia
Golden Valley	New Hope	Wayzata
Greenwood	Newport	West St. Paul



Our wastewater
rates are **35%**
Below the
national average

For more information on inflow and infiltration

Visit metrocouncil.org/Wastewater-Water/Planning/Wastewater/Inflow-and-Infiltration

Contact Judd Schetnan at judd.schetnan@metc.state.mn.us

