



Minnesota Racing Commission

MISSION STATEMENT

The Minnesota Racing Commission was established to regulate horse racing and card playing in Minnesota; to ensure that it is conducted in the public interest, and to take all necessary steps in ensuring the integrity of racing and card playing in Minnesota thus promoting the breeding of race horses in order to stimulate agriculture and rural agribusiness.

M.S. 240.03 PLACES THE FOLLOWING POWERS AND DUTIES ON THE COMMISSION

- to regulate horse racing in Minnesota to ensure that it is conducted in the public interest;
- to issue licenses as provided in this chapter;
- to enforce all laws and rules governing horse racing;
- to collect and distribute all taxes provided for in this chapter;
- to conduct necessary investigations and inquiries and compel the submission of information, documents, and records it deems necessary to carry out its duties;
- to supervise the conduct of pari-mutuel betting on horse racing;
- to employ and supervise personnel under this chapter;
- to determine the number of racing days to be held in the state and at each licensed racetrack;
- to take all necessary steps to ensure the integrity of racing in Minnesota; and to impose fees on the racing and card playing industries sufficient to recover the operating costs of the commission with the approval of the legislature according to section 16A.1283. Notwithstanding section 16A.1283, when the legislature is not in session, the commissioner of finance may grant interim approval for any new fees or adjustments to existing fees that are not statutorily specified, until such time as the legislature reconvenes and acts upon the new fees or adjustments. As part of its biennial budget request, the commission must propose changes to its fees that will be sufficient to recover the operating costs of the commission.

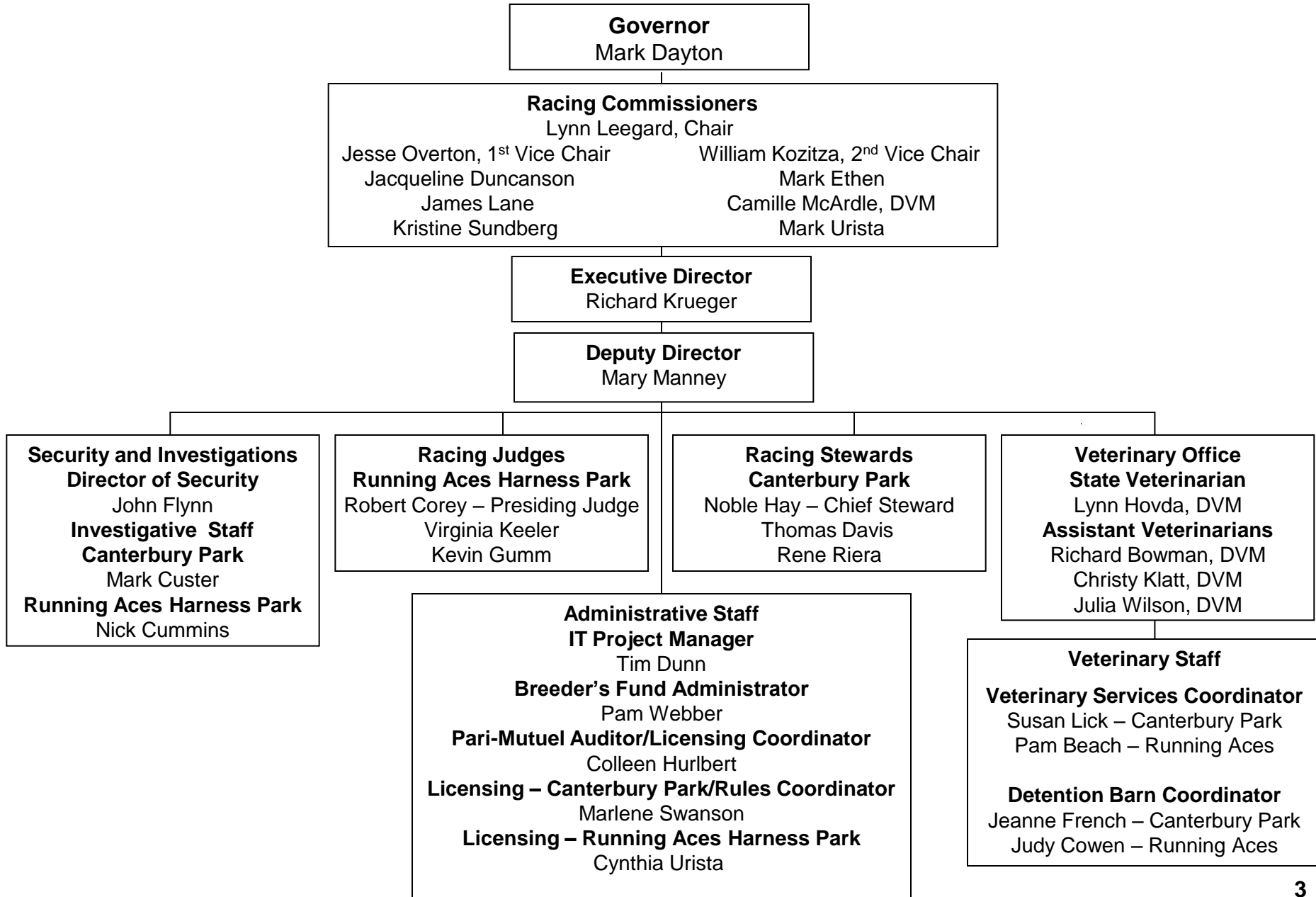
THE PRIMARY RESPONSIBILITIES OF THE COMMISSION ARE:

- to issue and renew licenses

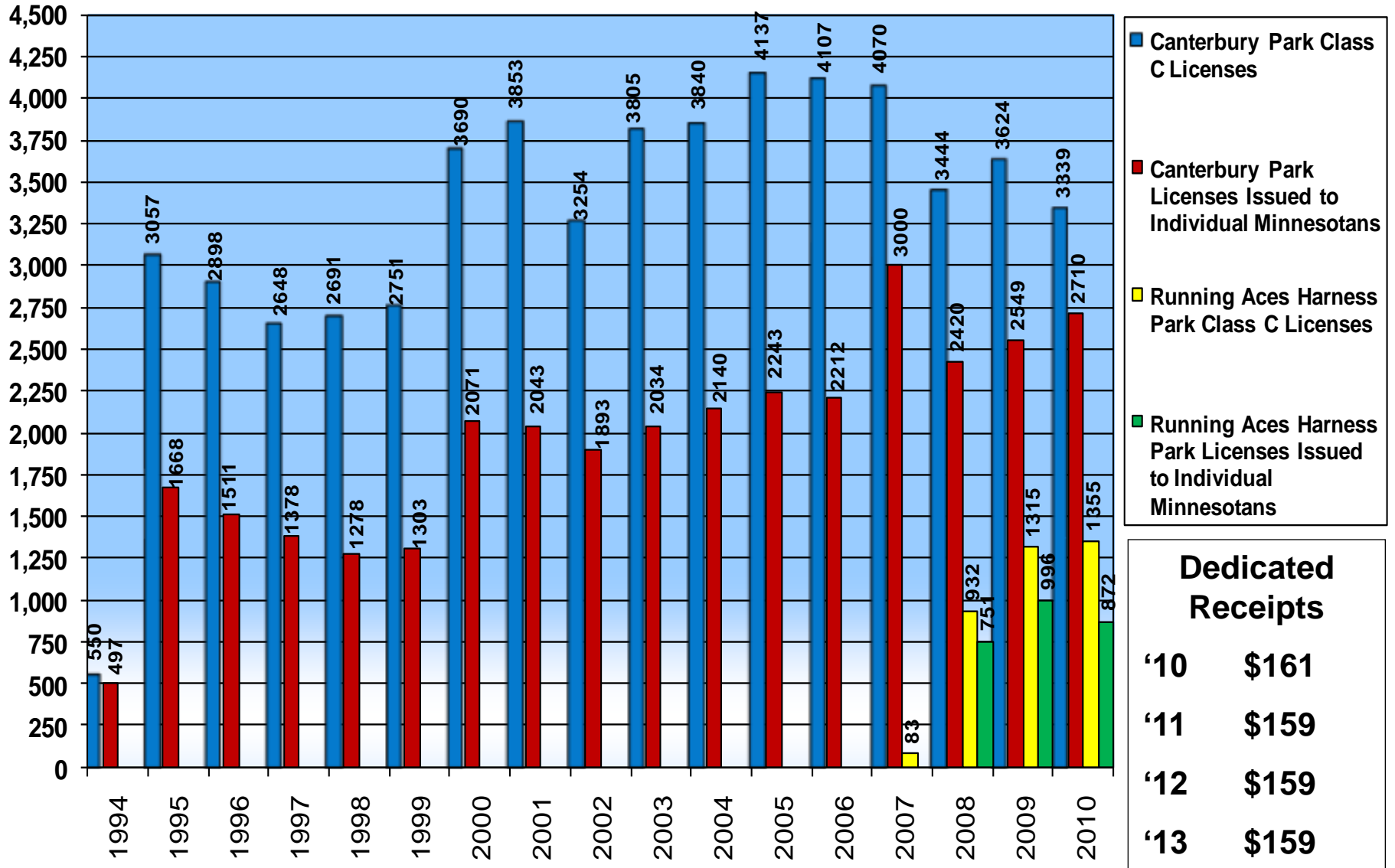
Revenue Estimates for Spending Authority - Appropriation				
Fund 200 – Special Revenue	'08	'09	'10	'11
License Type				
A (Racetrack)	\$506	\$506	\$506	\$506
B (Racing)	\$71	\$123	\$129	\$129
C (Occupational)	\$166	\$172	\$160	\$159
D (County Fair)	\$0	\$0	\$0	\$0
	\$743	\$801	\$795	\$794

- assignment of racing days
- rulemaking
- approval of pari-mutuel pools and racing officials
- contract approval
- split Lab approval
- purse supplement distribution from the Breeders' Fund
- review of appeals of stewards' disciplinary rulings
- Approval of Plan of Operation for Card Clubs

ORGANIZATION OF THE RACING COMMISSION

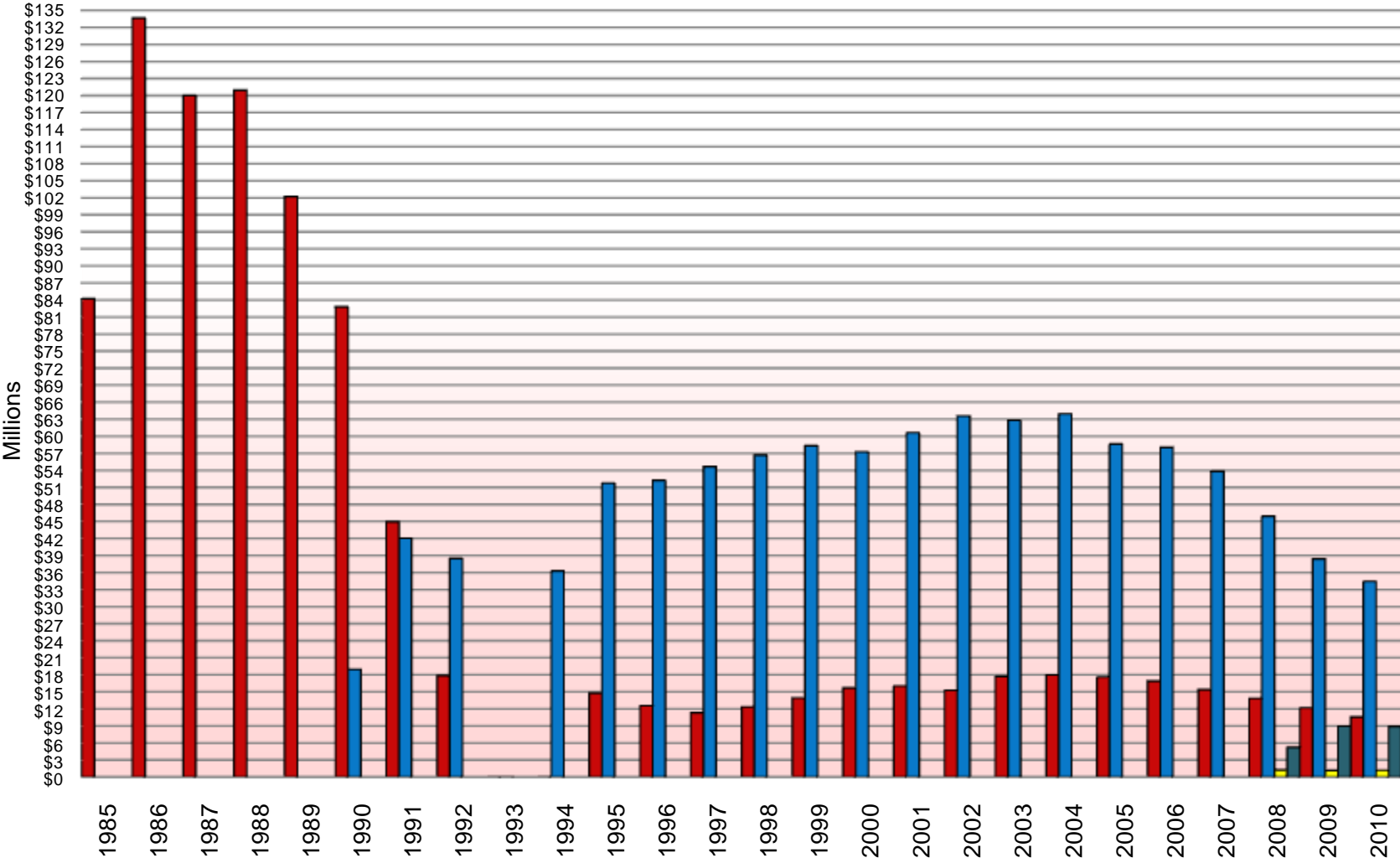


CLASS "C" OCCUPATIONAL LICENSING



In addition to licenses issued to Minnesotans, licenses were issued to individuals from 42 different states and Canada, England, Mexico and Switzerland.

RACING HANDLE CALENDAR YEARS 1985 - 2010

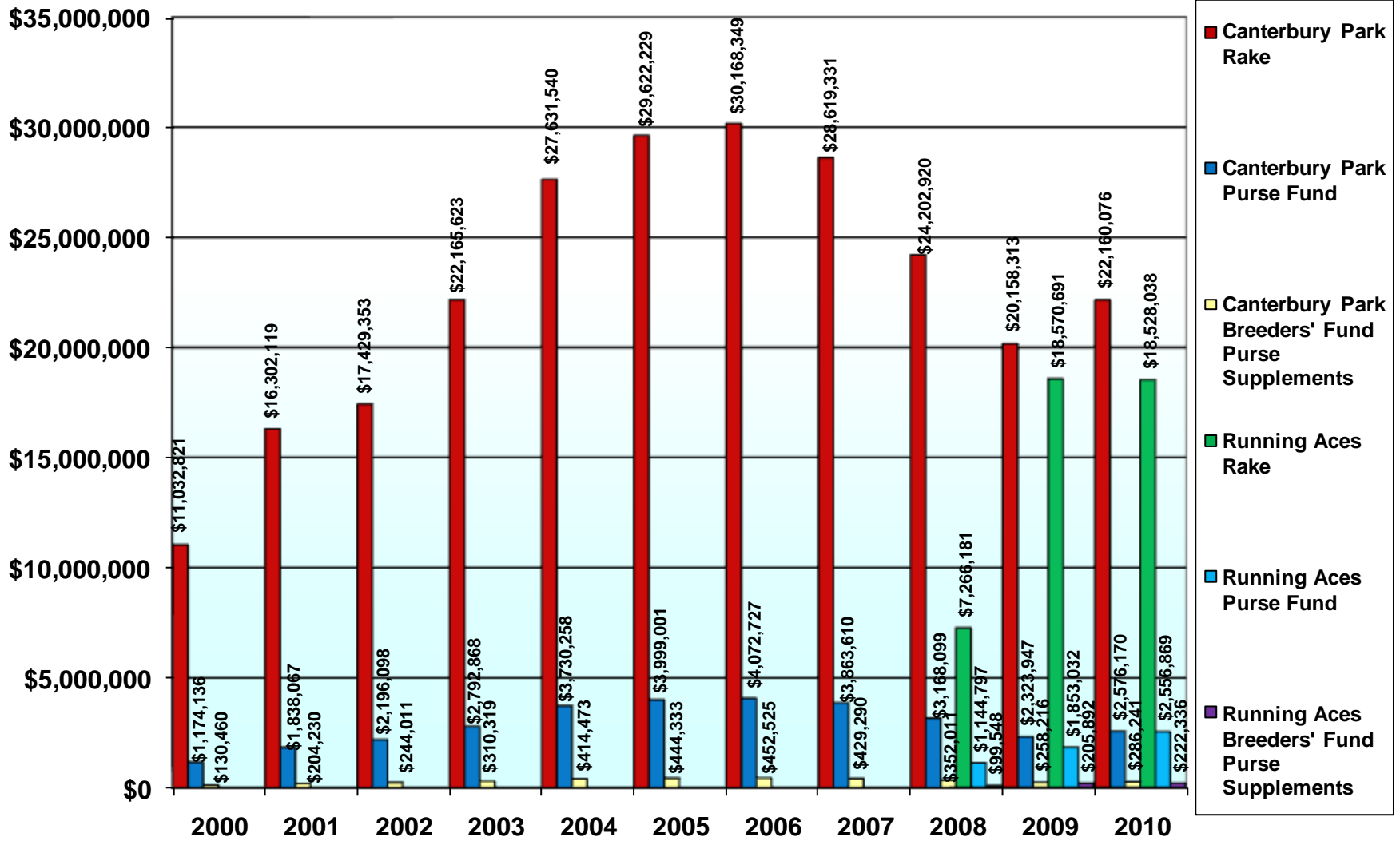


■ Canterbury Live
 ■ Canterbury Simulcast
 ■ Running Aces Live
 ■ Running Aces Simulcast

BREEDERS' FUND HORSE REGISTRATIONS

Year	THOROUGHBRED			QUARTER HORSE			STANDARD BRED	
	Stallions	Mares	Foals	Stallions	Mares	Foals	Stallions	Foals
1985	54	543	403	1	0	97	1	17
1986	99	895	601	70	241	70	22	13
1987	112	988	648	73	178	78	15	20
1988	141	1261	760	94	229	109	18	23
1989	141	1334	844	119	272	143	22	28
1990	118	1145	653	95	257	134	19	30
1991	104	966	612	88	214	112	11	21
1992	85	735	450	72	175	90	7	16
1993	63	444	242	52	131	81	6	17
1994	49	253	160	40	85	64	3	14
1995	46	265	179	43	98	59	3	9
1996	44	275	168	47	105	54	3	8
1997	41	210	138	48	95	53	4	8
1998	40	211	140	49	103	75	7	8
1999	31	234	166	41	88	48	4	10
2000	26	232	171	35	91	41	3	10
2001	31	304	232	37	124	46	4	12
2002	34	323	265	35	102	58	8	9
2003	30	365	284	28	107	73	11	28
2004	35	408	336	21	91	71	15	35
2005	42	452	344	24	80	49	19	56
2006	42	440	340	24	79	56	16	93
2007	38	409	315	20	79	45	16	76
2008	37	391	291	18	69	39	24	94
2009	41	329	235	16	69	35	20	91
2010	33	212	142	13	69	42	20	83

CARD CLUB RAKE



Canterbury Park's Card Club opened in April 2000
 Running Aces Harness Park Card Club opened in July 2008

RACING COMMISSION

Agency Overview

Dollars in Thousands

	Current		Governor Recomm.		Biennium
	FY2010	FY2011	FY2012	FY2013	2012-13
<u>Direct Appropriations by Fund</u>					
Miscellaneous Special Revenue					
Current Appropriation	880	870	870	870	1,740
Recommended	880	870	899	899	1,798
Change		0	29	29	58
% Biennial Change from 2008-09					2.7%
<u>Expenditures by Fund</u>					
Direct Appropriations					
Miscellaneous Special Revenue	730	870	899	899	1,798
Statutory Appropriations					
Miscellaneous Special Revenue	978	1,126	1,126	1,126	2,252
Miscellaneous Agency	1,105	1,127	1,127	1,127	2,254
Total	2,813	3,123	3,152	3,152	6,304
<u>Expenditures by Category</u>					
Total Compensation	898	994	994	994	1,988
Other Operating Expenses	1,075	1,230	1,259	1,259	2,518
Local Assistance	840	899	899	899	1,798
Total	2,813	3,123	3,152	3,152	6,304
<u>Expenditures by Program</u>					
Racing Commission	2,813	3,123	3,152	3,152	6,304
Total	2,813	3,123	3,152	3,152	6,304
Full-Time Equivalent (FTE)	12.7	12.7	12.7	12.7	