

**Crisis Stabilization Unit** 



*Front Porch/Smoking Room*



*Kitchen*



*Bedroom #1*



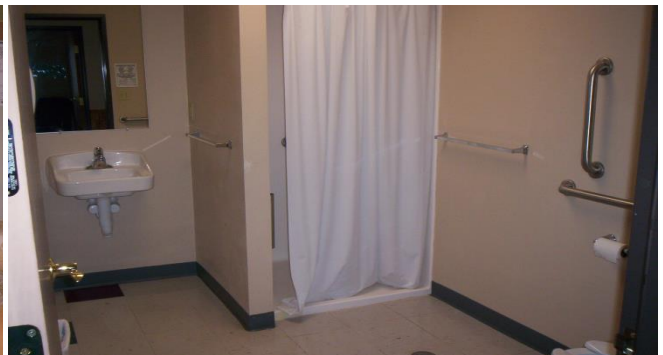
*Bedroom #2*



*Living Room*



*Bathroom*



# Amenities

## CSU Facility

- ≈ Unlocked facility with home atmosphere
- ≈ Laundry available on site
- ≈ Transportation available for in-town appointments.
- ≈ Out of town appointments should be coordinated with care coordinators or rescheduled.

## Front Porch

- ≈ Smoking is allowed in the screened in porch.

## Kitchen

- ≈ Microwave, no stove/oven
- ≈ Refrigerator
- ≈ Meals on Wheels delivery service
- ≈ Coffee pot & decaf coffee (clients may bring their own coffee)

## Bedrooms

- ≈ Separate bedrooms with bedding provided
- ≈ Homemade quilts are optional to take home

## Living Room

- ≈ Wii (sports & fit)
- ≈ Internet, TV/cable
- ≈ Access to library for reading materials or other audio resources
- ≈ Outdoor games, board games, movies, books, magazines, crafts
- ≈ Phone for clients to make local calls or receive incoming calls
- ≈ Clients may use staff phone for short long distance calls

## Bathroom

- ≈ Basic hygiene products available if client forgets (toothbrush, toothpaste etc.)
- ≈ Handicap accessible shower
- ≈ Towels & washcloths available

## Services

- ≈ Client centered
- ≈ Crisis skills, resources, advocacy
- ≈ Service coordination, education
- ≈ Staffing available 24/7 1:2 staff to client ratio
- ≈ Safety: clients should be medically stable, non-chemically compromised, and no sexual predator history
- ≈ Diabetic clients are accepted if capable of administering own medications

## Medication

- ≈ Must bring medications in original bottles.
- ≈ If client is unable to bring or has run out of meds, CSU staff can help coordinate with pharmacy

## **Crisis Stabilization Unit**

1013 North Tower Road

Fergus Falls, MN 56537

Phone: 218-998-2525 OR 1-800-354-3707

Fax: 218-998-2522