



# Getting the Lead Out: Sources, Costs, and Benefits

Tannie Eshenaur, M.P.H.

Water Policy Center, Environmental Health Division

for the House Capital Investment Committee

March 3, 2022

# No safe level of lead exposure

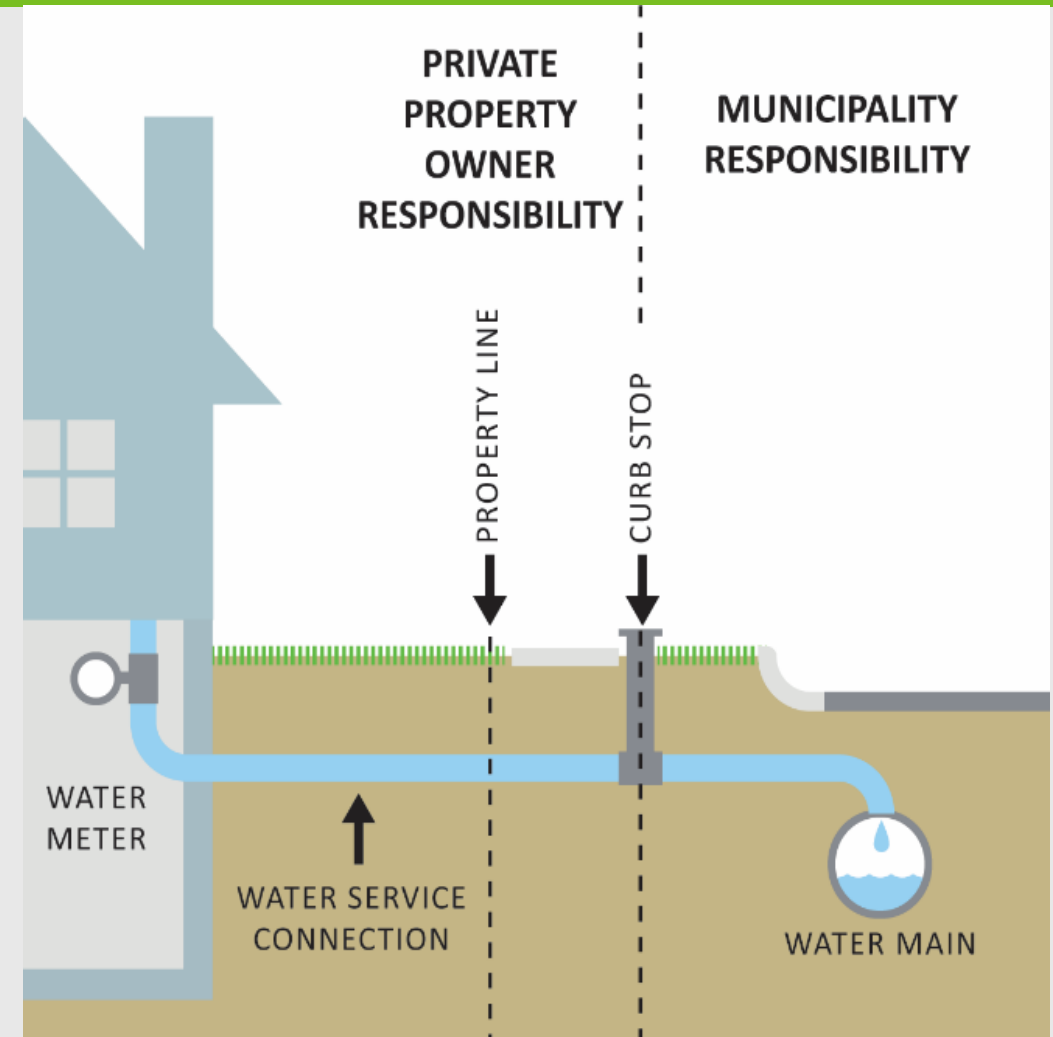
## Two main sources of lead:

### 1. Lead service Lines

- ✓ Adds 50% of lead in drinking water
- ✓ Estimate 100,000 in MN
- ✓ Public/private ownership

### 2. Premise plumbing

- ✓ Pipes, solder, and fixtures
- ✓ After 1986 could be 8%; after 1996 no more than 0.25%
- ✓ Flushing can help, but not solve problem



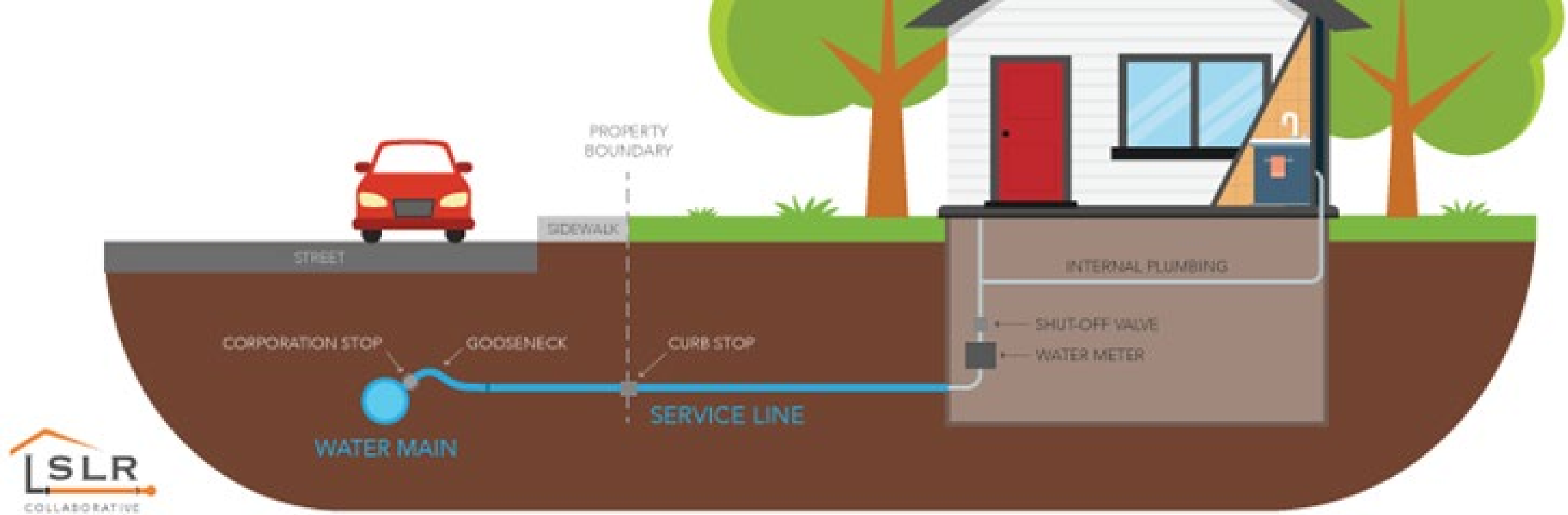
# \$1 investment = \$2 benefit to Minnesotans

# \$1

Costs		
	Low \$	High \$
<b>Fixtures/Solder</b>	1.2 B	3.7 B
<b>LSL Replacement</b>	0.2 B	0.4 B
<b>Technical Assistance</b>	0.06 B	0.06 B
<b>TOTAL</b>	1.5 B	4.1 B

# \$2

Benefits		
	Low \$	High \$
<b>IQ/earning gain - fixtures</b>	2.1 B	4.2 B
<b>IQ/earning gain – LSL removal</b>	2.1 B	4.2 B
<b>TOTAL</b>	4.2 B	8.5 B



# Lead Service Line Inventory & Asset Management Funding

Chad Kolstad, P.E. – Infrastructure Funding Program Coordinator

# Importance of Lead Service Line Inventories

- Get the lead out!
  - *Where are the lead service lines?*
  - *How much will replacement cost?*



EPA requirement: lead service line inventory

- Deadline: October 2024
- Systems lack resources for an accurate inventory

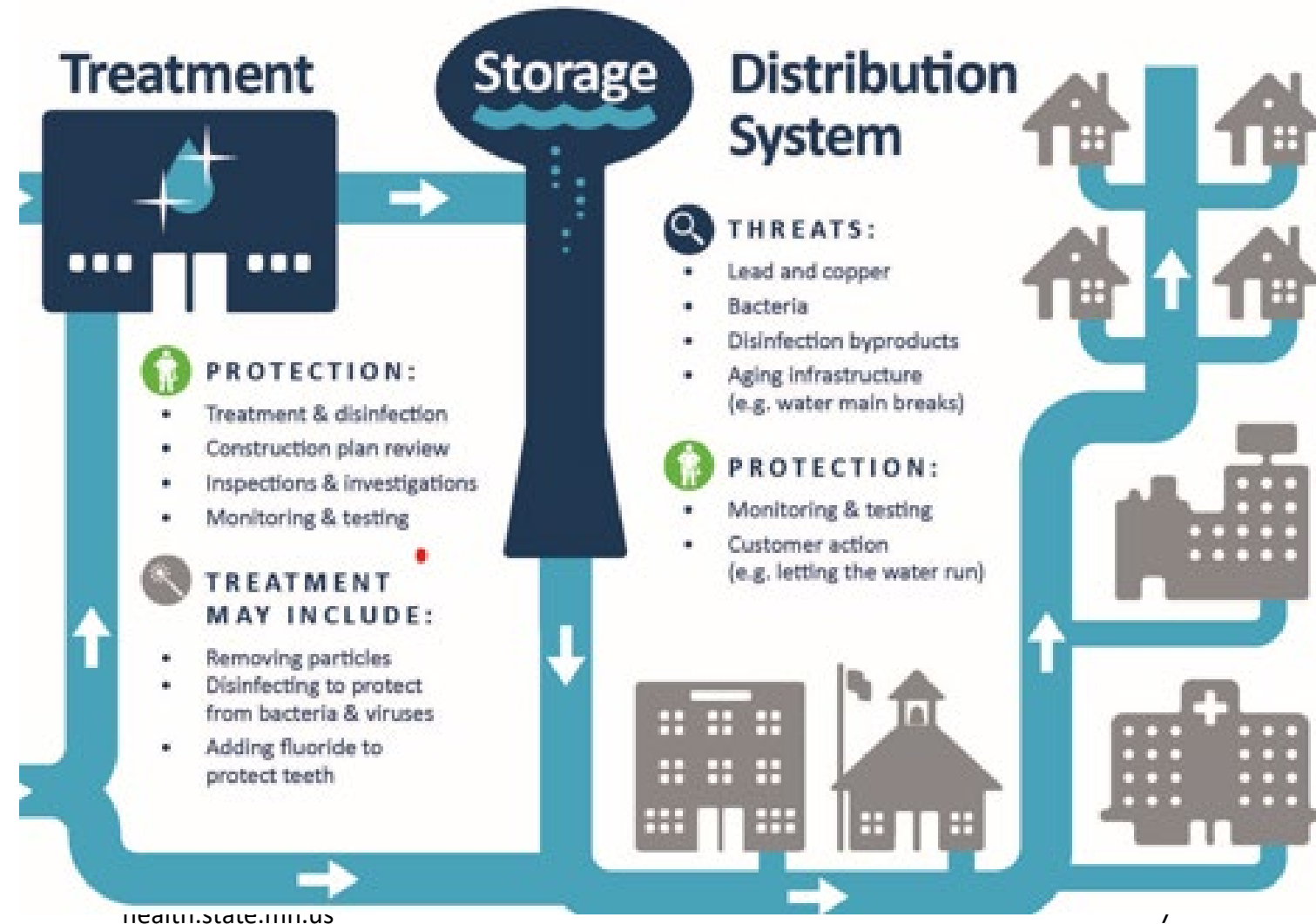
# Inventory Sources of Information



- Paper Records
  - Installation Records
  - Plumbing Permits
  - Plans & Specifications
- Visual Inspection
  - Inside home
  - Digging in the yard or street

# Proper Documentation

- Excel-based Spreadsheets
- GIS Mapping Software
- Asset Management Plans



- Governor's Proposal for LSL Inventories and Asset Management Plan
  - \$3,750,000/year for two years + 2 staff
  - ~750 water systems @ \$10,000/system
- Lead service line inventory is part of an overall asset management plan
- Asset management: proactive planning for future rate and infrastructure needs





DEPARTMENT  
OF HEALTH

Our vision:  
Drinking water  
is safe for  
everyone,  
everywhere in  
Minnesota.