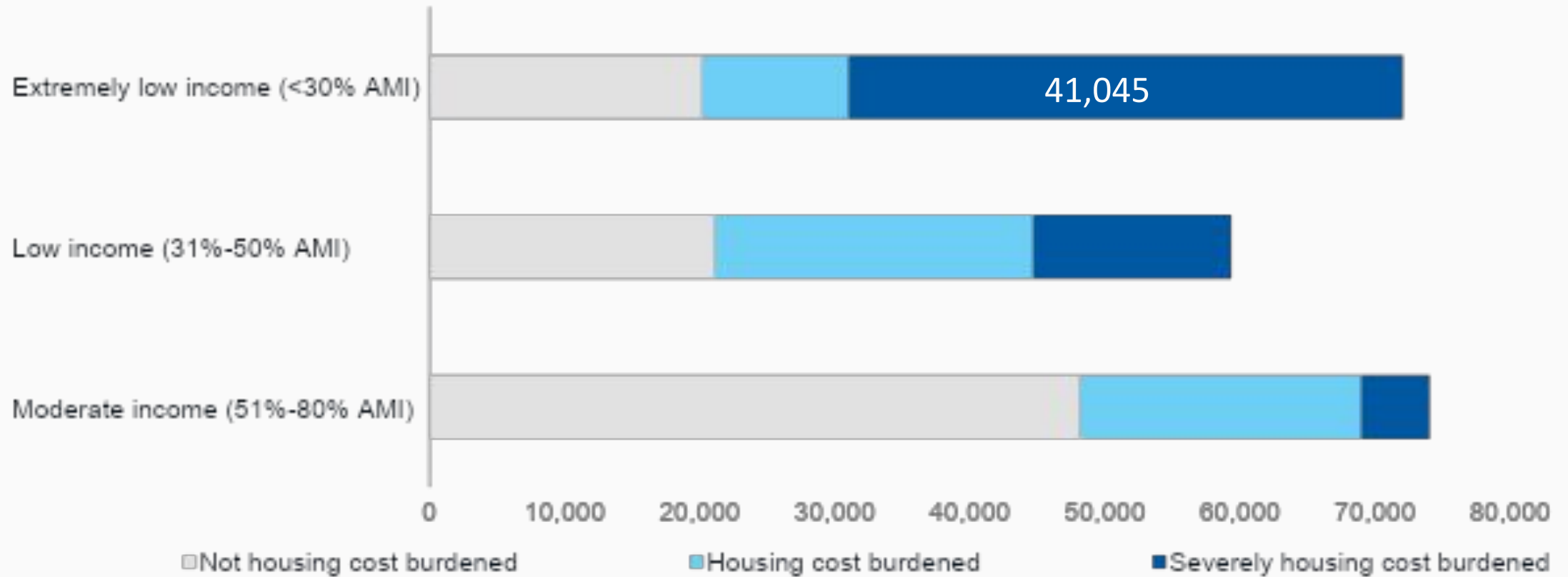




HENNEPIN COUNTY  
MINNESOTA

# Housing affordability disproportionately impacts households with lowest incomes



# Our current impact

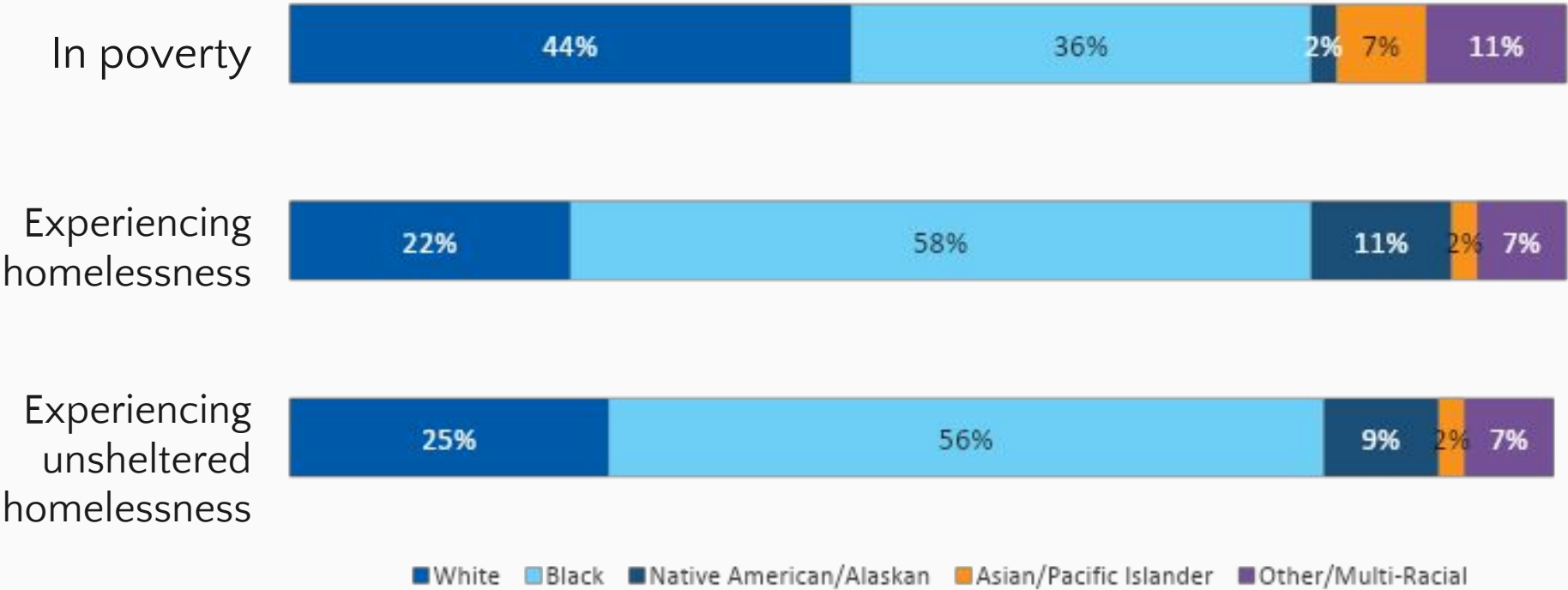
- **1,100 units** of affordable housing created or preserved annually since 2010
- Help **23,000 households** a year access and maintain stable, affordable housing through supportive housing services, subsidies and other programs
- **1,200 single shelter beds** and as many as 115 family rooms, which shelter around **8,000 people experiencing homelessness** every year



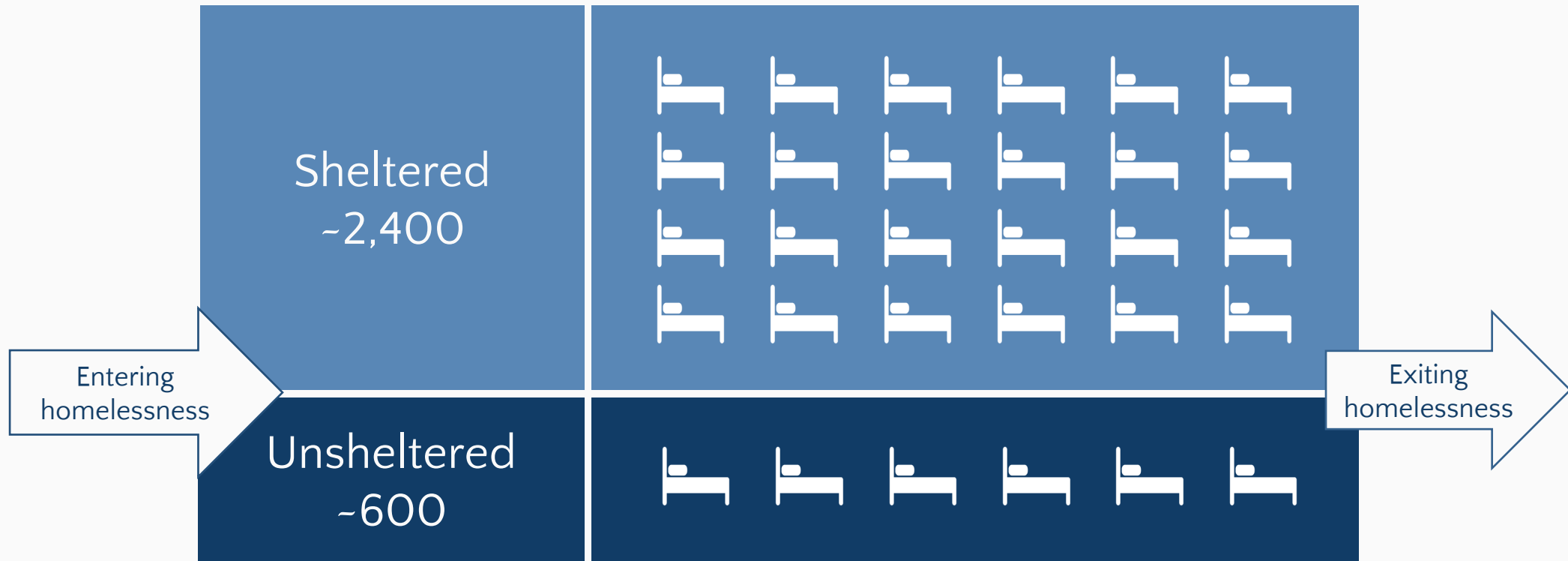
# Who experiences homelessness in Hennepin County?



All people



# Homelessness in Hennepin County 2020



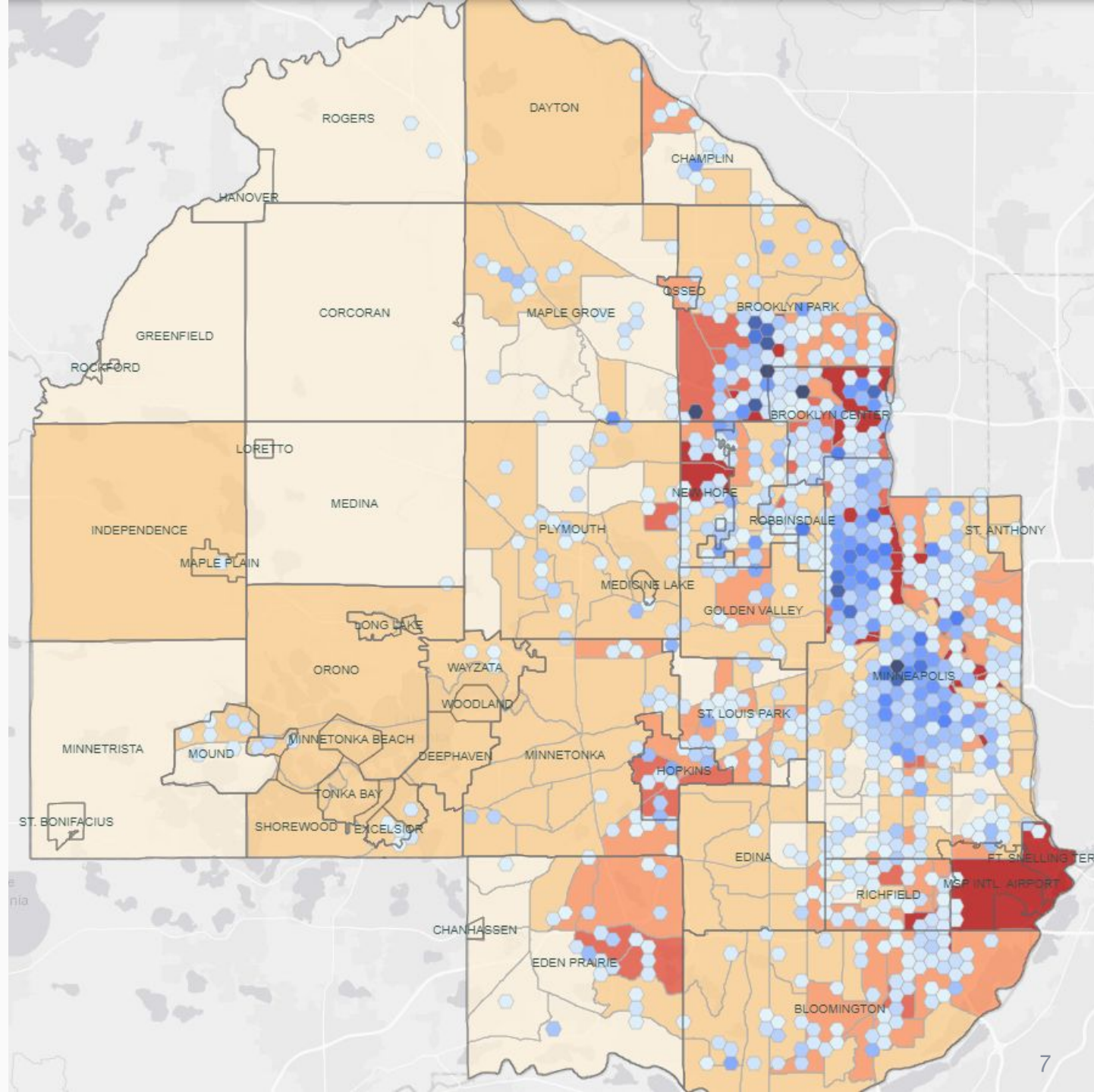


# Shelter supports

- 1,118 sheltered during pandemic in protective shelter hotels
- 697 made use of isolation rooms
- Shelters operating 24/7
- 3 new shelters opened, totaling 180 beds
- 2,165 exits from homelessness to permanent housing.

# Emergency Rental Assistance

- \$16.2 million of emergency rent assistance to more than 6,000 low-income households
- 2/3 of assisted households had extremely low incomes
- 50% of funds went to regions with most disparate COVID-19 impact
- Administered additional \$6 million from Minnesota CARES funding for moderate-income renters



# Single room occupancy case study – Stevens Square Residence

- County acquired VOA property for ~\$800,000
- Leased to Alliance Housing for \$1
- Alliance collects nominal rent (i.e. \$375/month) to cover operating costs
- Residents have own room, shared bathrooms, and kitchen, common spaces
- LuMINN, Metro Inn, University Inn will be transitioned to SRO housing post-pandemic





# COVID innovations

- Shelter system improvements
- Emergency rental assistance
- Strategic property acquisition



# Housing strategy in Hennepin County

Minimizing people  
entering homelessness

Prevention/diversion

Eviction process

Rental assistance

Maximizing people  
exiting homelessness

24/7 shelter + case management

Deeply affordable housing

Supportive housing