



CIVIL LEGAL SERVICES  
IN MINNESOTA

**SEEKING JUSTICE  
FOR ALL**

House Judiciary Finance and  
Civil Law Committee  
February 7, 2023

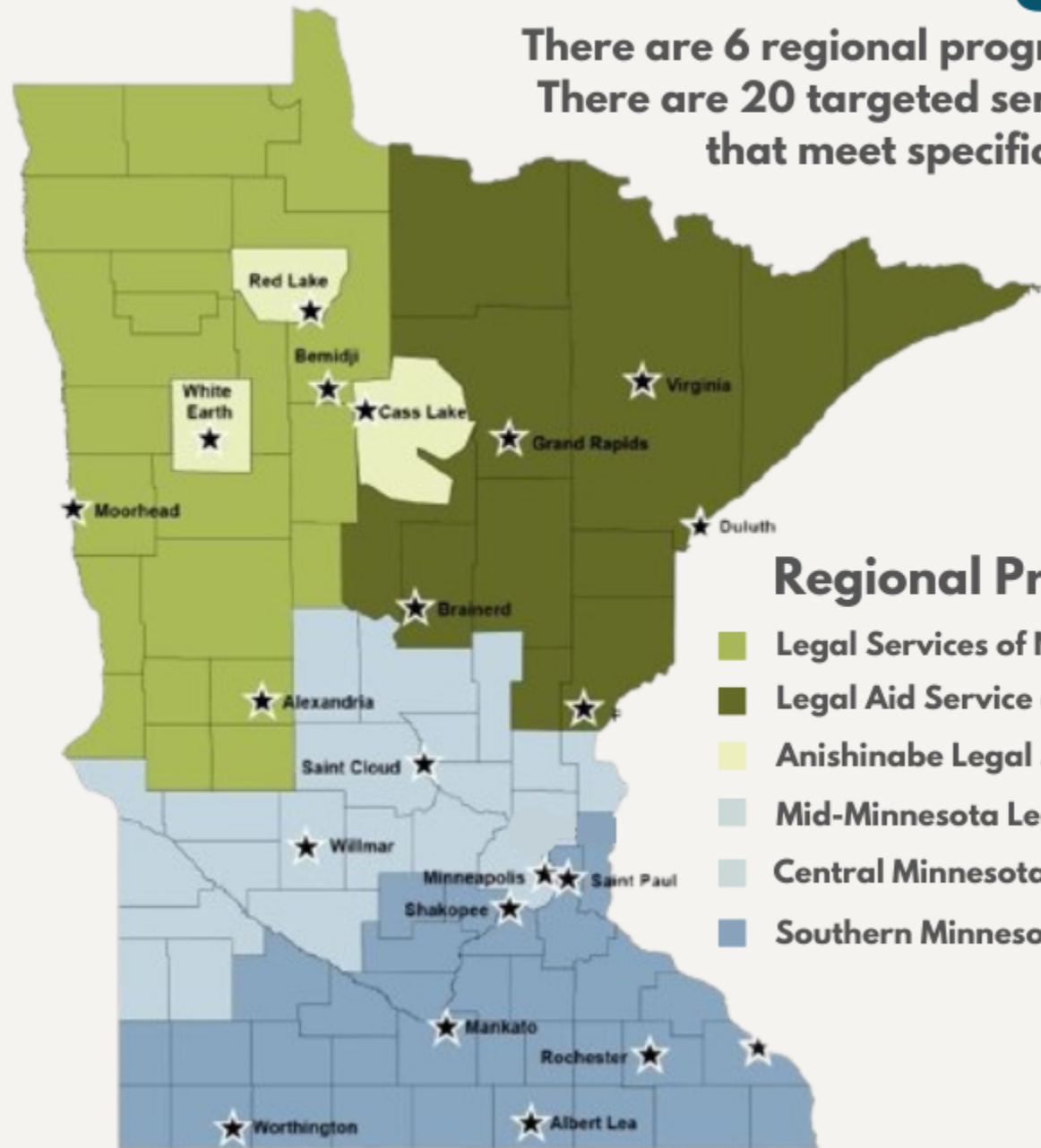
Presented by:

Dori Rapaport | Executive Director  
Legal Aid Service of Northeastern Minnesota



# Minnesota Civil Legal Services Programs

There are 6 regional programs covering all 87 counties in Minnesota.  
There are 20 targeted service programs and support organizations that meet specific population or geographic needs.



## Regional Programs

- Legal Services of Northwest Minnesota
- Legal Aid Service of Northeastern Minnesota
- Anishinabe Legal Services
- Mid-Minnesota Legal Aid
- Central Minnesota Legal Services
- Southern Minnesota Regional Legal Services

## Targeted Programs

- Cancer Legal Care
- Community Mediation Minnesota
- Farmers Legal Action Group
- HOME Line
- Housing Justice Center
- Immigrant Law Center of Minnesota
- Indian Child Welfare Act (ICWA) Law Center
- Judicare of Anoka County
- Legal Assistance of Dakota County
- Legal Assistance of Olmsted County
- LegalCORPS
- Legal Services State Support
- Loan Repayment Assistance Program of MN
- Minnesota Disability Law Center
- Minnesota Justice Foundation
- Rainbow Health
- Standpoint (f/k/a Battered Women's Legal Advocacy Project)
- The Advocates for Human Rights
- Tubman
- Volunteer Lawyers Network

# The People We Serve

## Who We Serve

- At or below 125% of Federal Poverty Guidelines  
(\$37,500 annual income for a family of 4)
- A civil legal issue  
(Focus on basic needs, safety, shelter, health, and sustenance)
- Legal merit
- Availability of other resources

## Demographics

CLS provides access to the justice system for Black, Indigenous, and People of Color; people with disabilities, the elderly; the LGBTQ community; and veterans. These populations have disproportionate numbers of people with low income who qualify for CLS services.

**2021**

**93,570 Minnesotans served**

**43,762 cases closed**

In 2021, 53% of clients served by CLS were non-white.

- 25% Black
- 14% Hispanic
- 5% Asian
- 4% Native American
- 4% Other

# Civil Legal Services Average Salary Comparison

**Assistant Public Defender**

requested starting salary for FY24

**\$82,908**

**Assistant Public Defender**

current starting salary

**\$70,146**

**Civil Legal Services**

requested starting salary for FY24

**\$70,000**

**Judicial Branch Law Clerk**

current starting salary

**\$57,712**

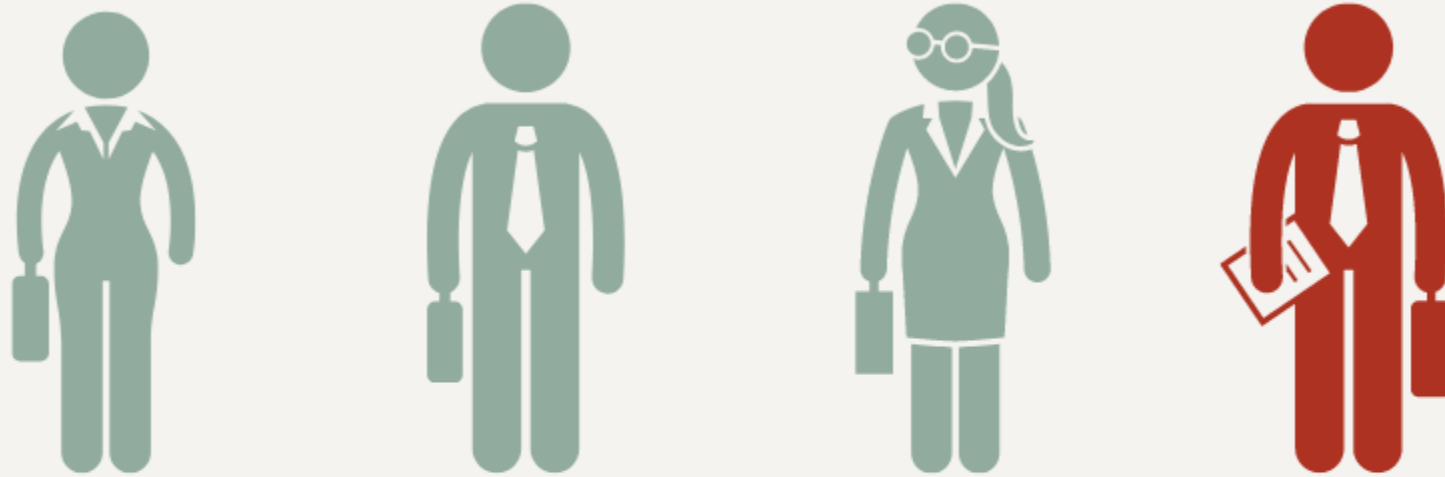
**Civil Legal Services**

current starting salary

**\$56,362**



# 2022 Civil Legal Services Turnover



**2022 CLS turnover rate = 24%**

2020/21 CLS turnover rate was 32%.  
Salary parity progress is moving the needle.

# Civil Legal Services Turn away rate - 2022

(Data is based on samplings from three MN Civil Legal Service programs.)



Minnesotans who apply and are eligible for legal assistance from a CLS organization.



45% receive services

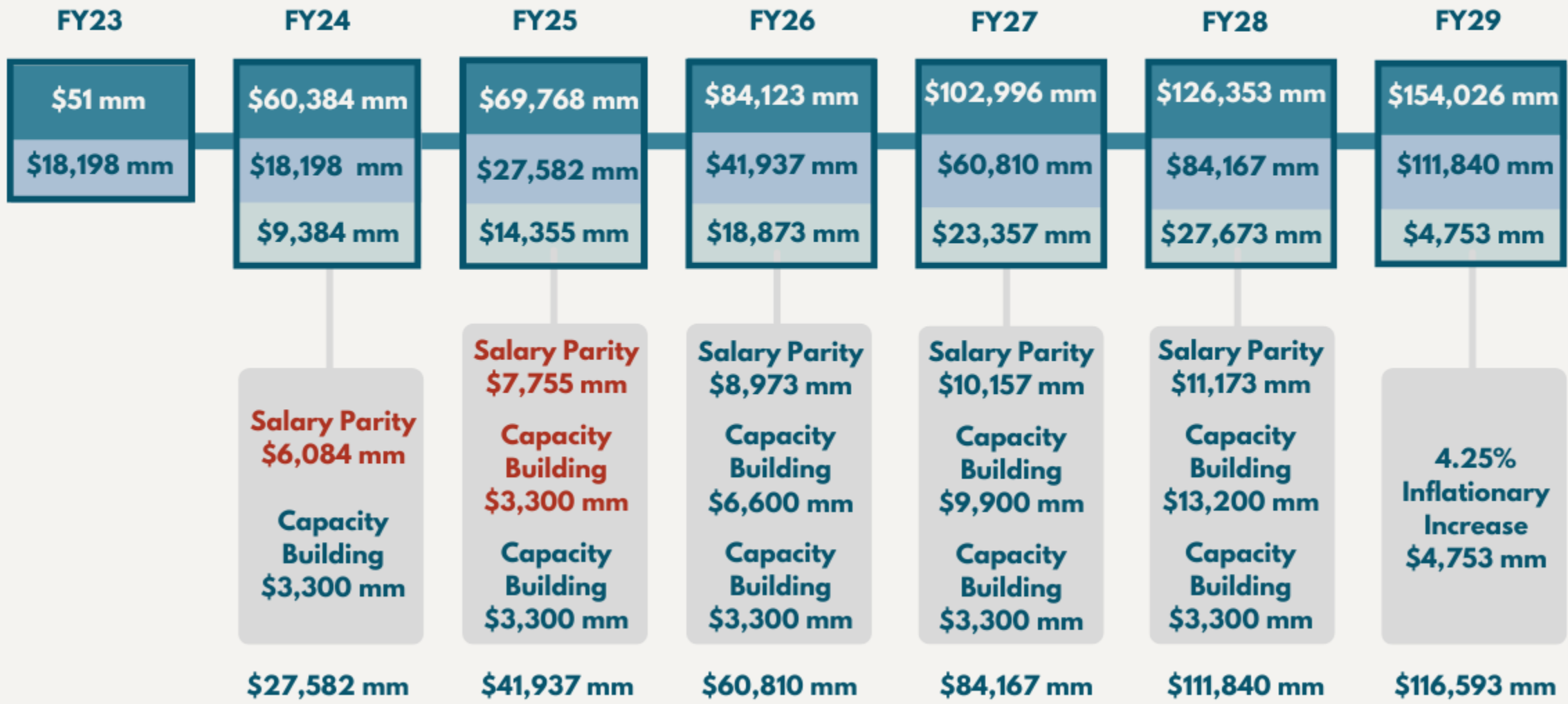


28.6% are fully served

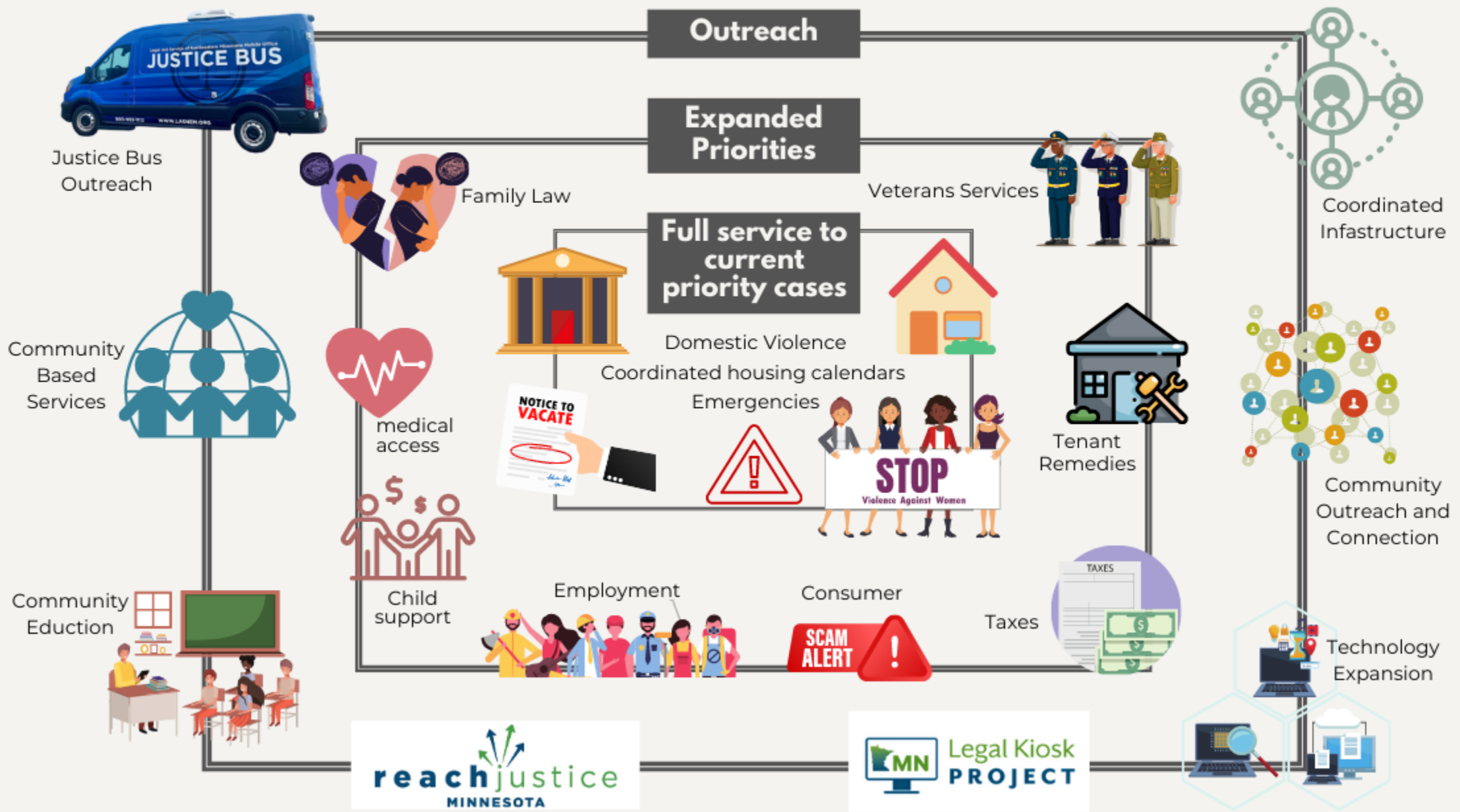
Sample data indicates 71.4% of advice-only cases needed further services.

# Fully funding Civil Legal Services

Total CLS Budget
  State Base
  Increase to the Base



# A Fully Funded Civil Legal Services looks like:





**Q & A**

# Contact Information:

**Dori Rapaport**

**[drapaport@lasnem.org](mailto:drapaport@lasnem.org)**

**218-623-8119**

**Legal Aid Service of Northeastern Minnesota**