



# **The Council on Asian Pacific Minnesotans**

---

**A state agency since 1985**

February 9, 2021



# History: 1985 to Present

## History of the Council

- 1975: The fall of Saigon signaled the beginning of the Southeast Asian diaspora in Minnesota and the U.S.
- 1985: The Legislature created the Council following a demonstrated need to connect the needs of this growing Asian Pacific Minnesotan community to state government.
- 2015: Significant restructuring shaped the 3 ethnic councils into the structure they have today.

## A Community of Contrasts

- Estimated at 317,000 residents from over 40 ancestries
- Culturally, ethnically, and linguistically diverse
- Immigrants and refugees

# Statutory Role and Responsibilities

## Minn. Stat. § 15.0145

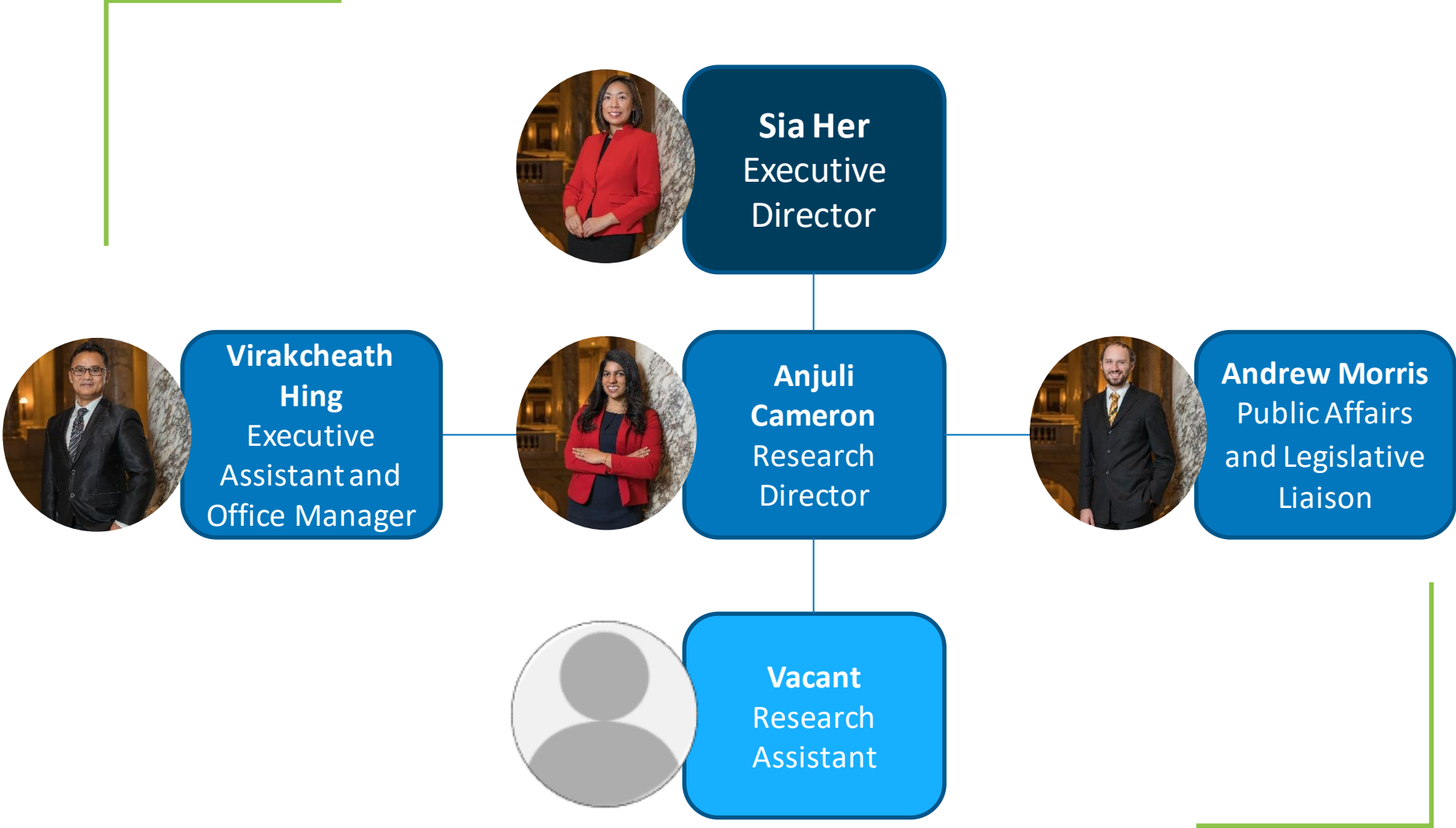
### *Duties of the Council*

- **Advise** the Governor and the Legislature on issues confronting the constituency of the Council.
- **Advocate** for administrative and legislative changes needed to improve the economic and social condition of the constituency of the Council.
- **Connect** state government with organizations that serve the constituency of the Council.

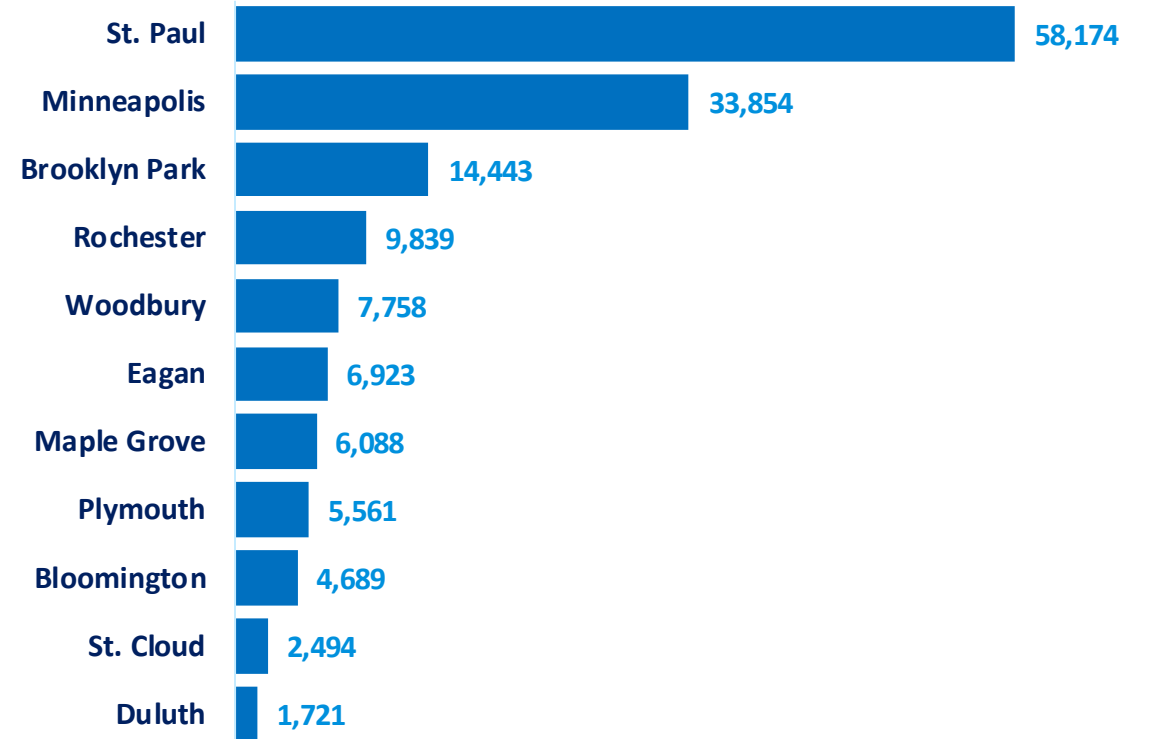
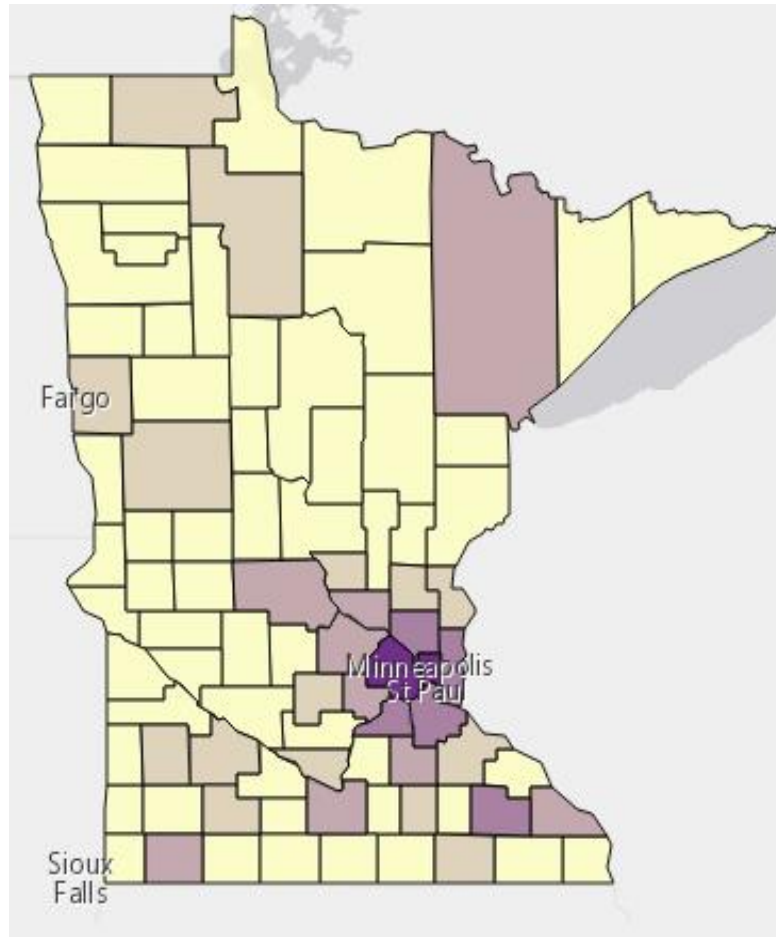
### *Key Provisions*

- 15-member board
  - **11 voting community members:** appointed by the Governor; term limited to a total of 8 years
  - **4 voting legislative members:** appointed by legislative leadership; term limited to 8 consecutive years
- Executive director serves in the unclassified service at the pleasure of the Legislative Coordinating Commission
- Annual report due by January 15 to committees with jurisdiction over State Government Finance

# Council Staff

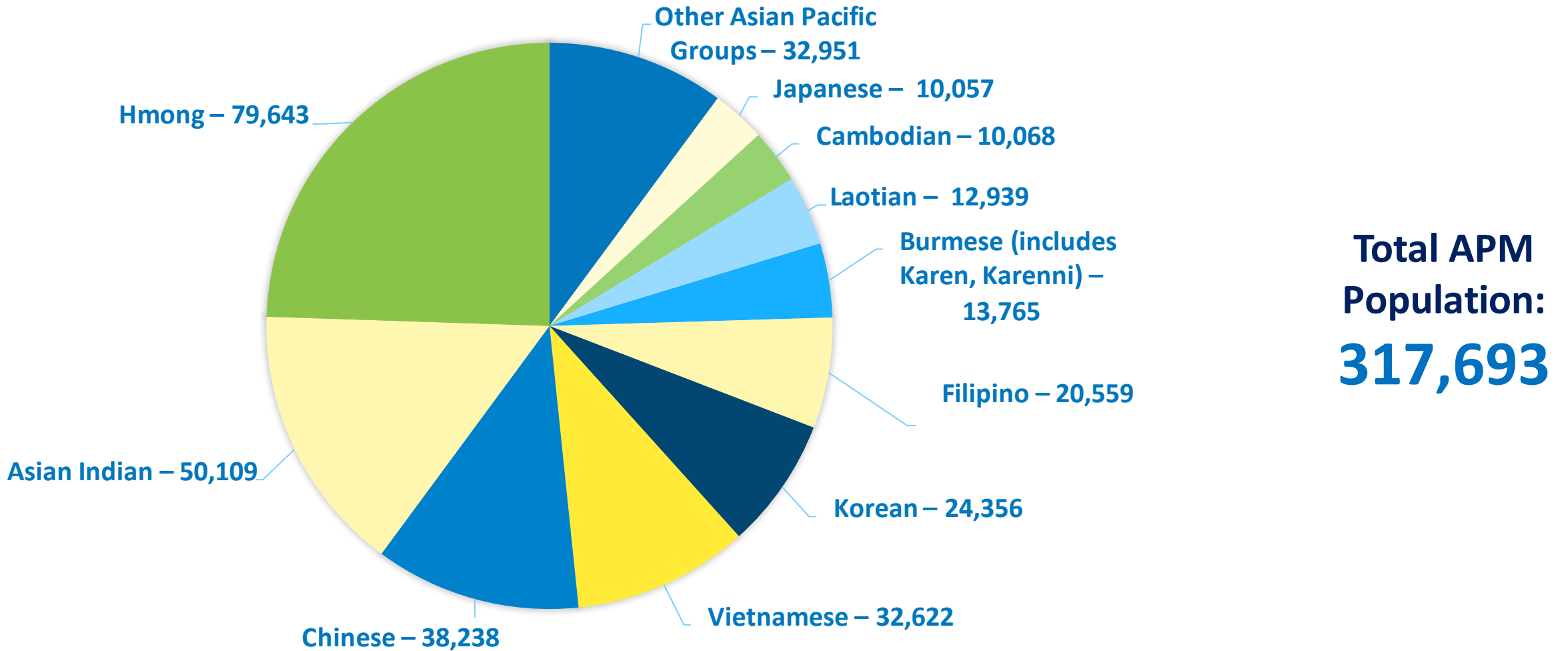


# Asian Pacific Minnesota: Spread



Cities with the highest concentrations of Asian Pacific Minnesotans residents

# Asian Pacific Minnesota: Population by Communities



# Asian Pacific Minnesota: Refugees and Immigrants

## Refugees vs. Immigrants

*Refugee:* Someone who “owing to a well-founded fear of being persecuted for reasons of race, religion, nationality, membership of a particular social group or political opinion, is outside the country of his nationality, and is unable to, or owing to such fear, is unwilling to avail himself of the protection of that country.”

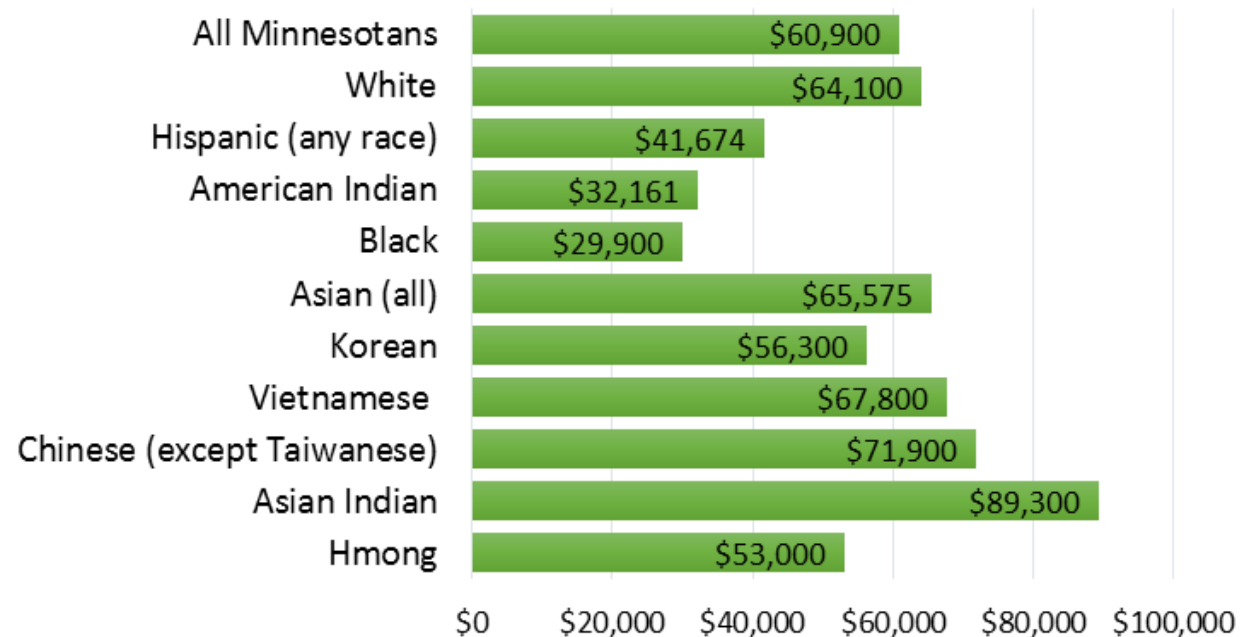
–United Nation High Commissioner for Refugees

*Immigrant:* A person who moves to a country where he or she intends to settle permanently.

Tibet Australia Nauru China Japan  
Thailand Cook-Islands Tuvalu Vanuatu  
Sri-Lanka Kyrgyzstan Philippines Vietnam  
Brunei Marshall-Islands Hong-Kong Tajikistan  
Mongolia Papua-New-Guinea Solomon-Islands  
Federal-States-of-Micronesia Tonga French-Polynesia Hmong  
New-Caledonia Northern-Mariana-Islands  
Taiwan Samoa Guam Macau Fiji Laos Bangladesh  
Singapore Federated-States-of-Midway-Islands Kazakhstan  
North-Korea Afghanistan New-Zealand  
Palau Malaysia Pitcairn-Islands Turkmenistan  
Maldives Indonesia Cambodia South-Korea Hawaii  
Nepal Kiribati Burma Pakistan Uzbekistan  
India Tahiti Bhutan

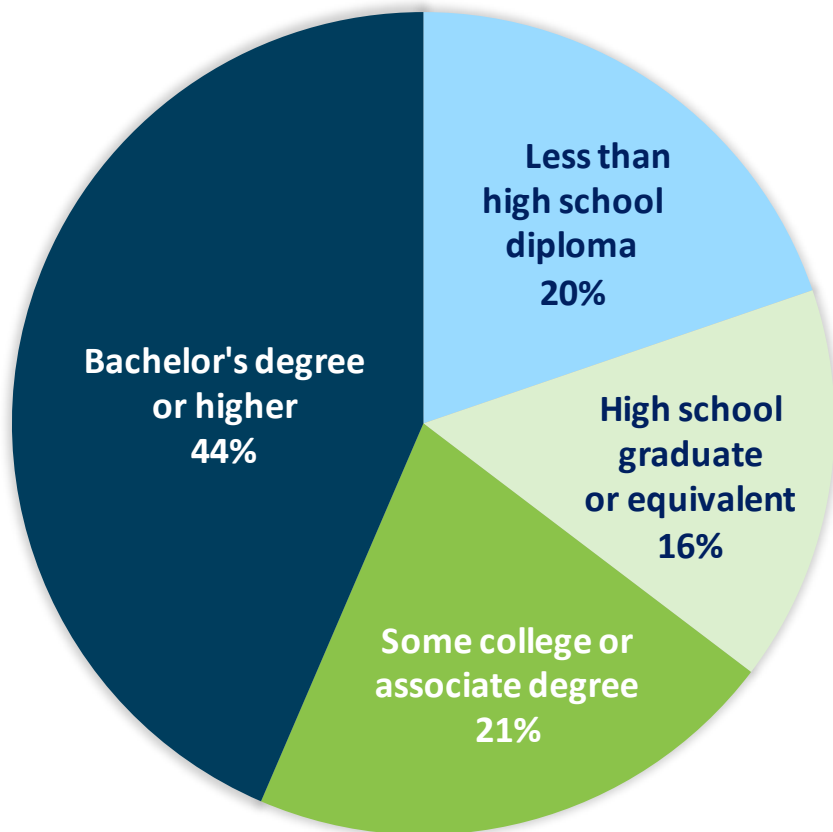
# Asian Pacific Minnesota: Household Income

## Median Household Income

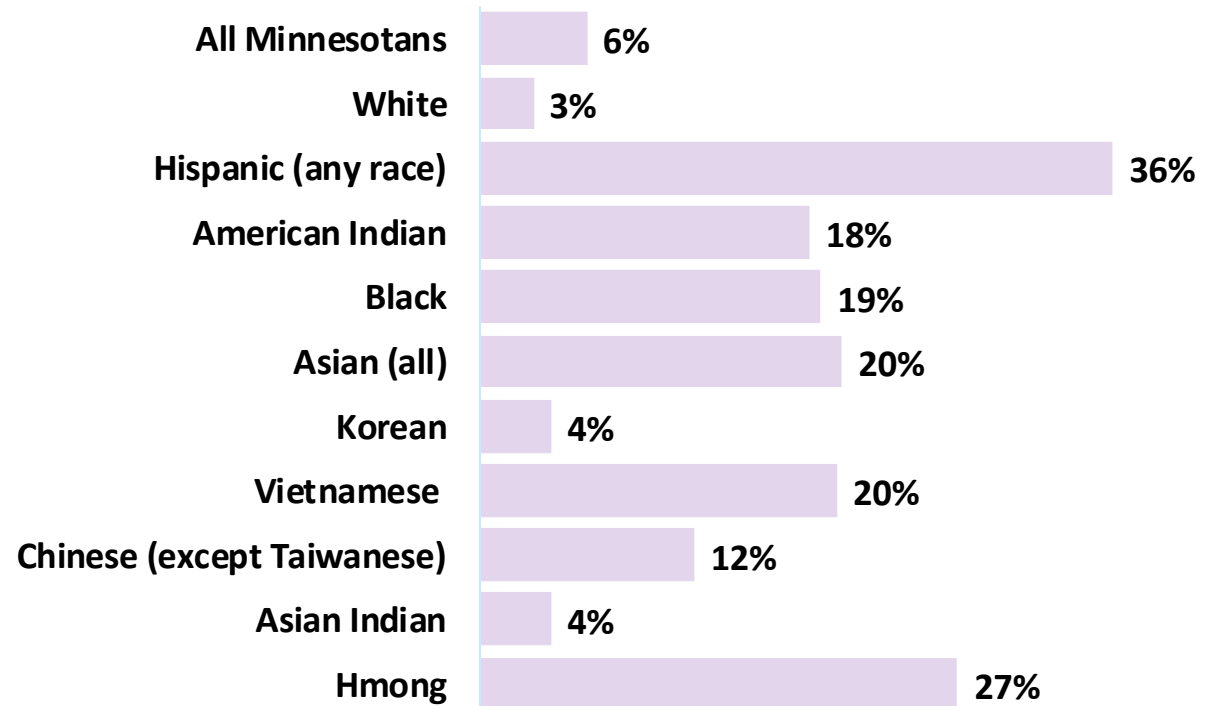




# Asian Pacific Minnesota: Educational Attainment



## Population with less than a high school diploma



# The Work of the Council

## Advise

- Identify and work with legislators to pass legislation on complex issues facing our community, including violence against Asian Pacific women and girls, medical interpreting, and targeted educational reform.
- Provide critical information to legislators and the Governor both routinely and as requested.

## Advocate

- Launch, convene, and facilitate initiatives to ensure that Asian Pacific Minnesotans engage with government at various levels.
- Coordinate outreach and access to Asian Pacific Minnesotans with linguistic, logistical, and technological limitations to ensure government leaders understand their realities.
- Request that state and congressional elected officials respond to specific challenges facing Asian Pacific Minnesotans.

## Connect

- Assist legislators, the Governor, and commissioners to better understand the diverse communities they represent through consistent and frequent presence in communities.
- Assist government officials in recognizing the achievements and work of community members.
- Produce high quality and original research that informs policy and administrative decisions.

# 2022-2023 Budget Request

## Governor's recommendation

- \$10,000 in FY2022 from the general fund
- \$19,000 in FY2023 from the general fund
- This represents a 2.8% increase over the Council's current biennial general fund base budget

# Questions?

