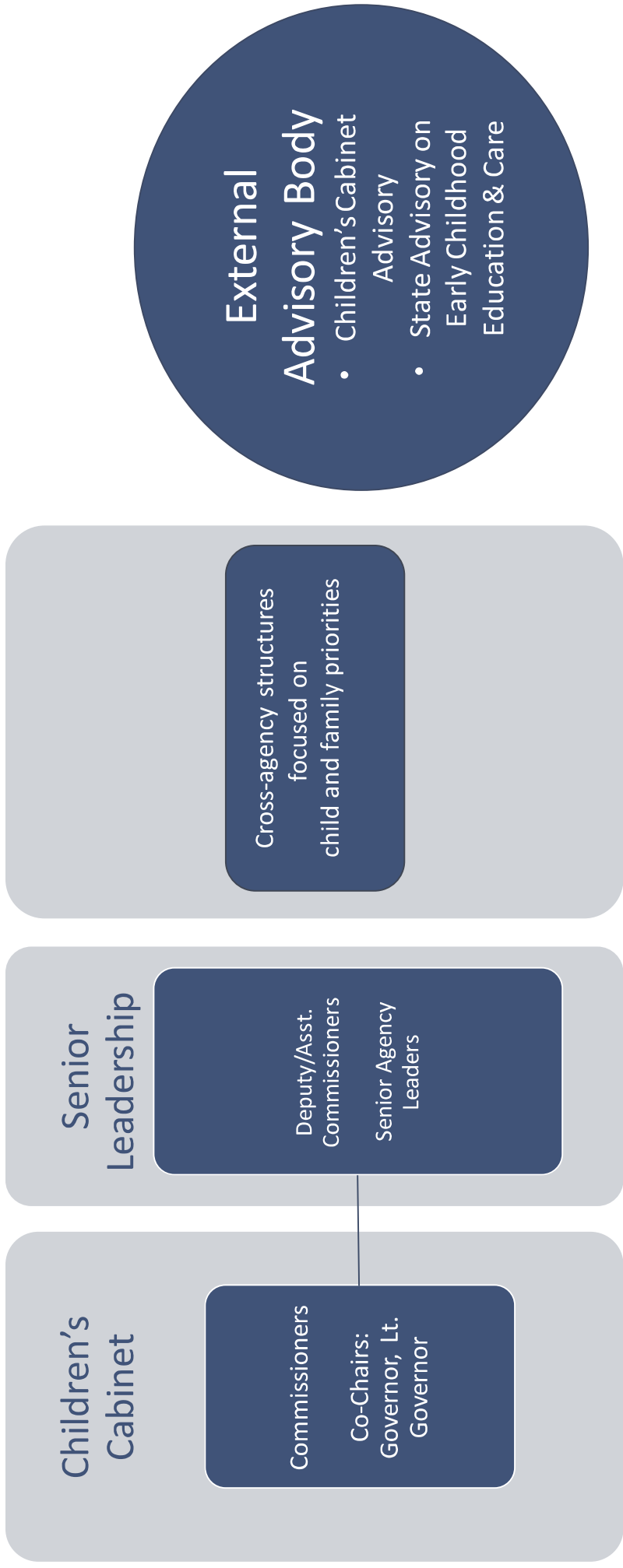




Children's Cabinet – Child Care and Early Education

Jenny Moses, Program Director

Children's Cabinet Governance



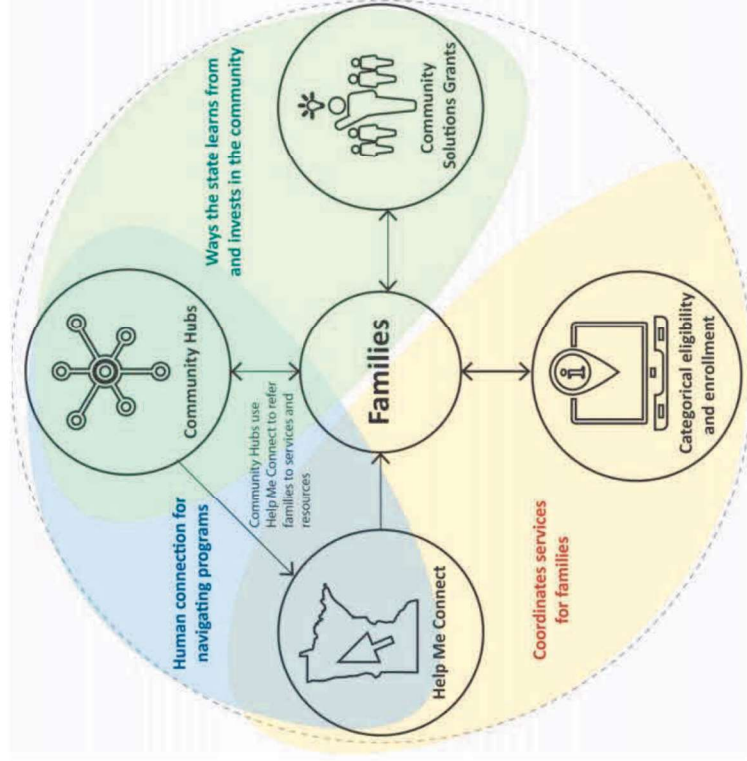
Child Care and Early Education

- Action area: *Expand access to child care and early education*
- One MN Plan Goal: *All Minnesota families have access to child care so business and community can thrive.*
- Agencies participating: *DEED, DHS, IRRRB, MDE, MDOR, MMB, Military Affairs, OHE*
- Meeting cadence: *monthly*
- Current work underway: *Activities related to coordinated policy and budget, engagement including communications, governance and workforce.*
- *The cross-agency team has been implementing critical initiatives to stabilize, support, and expand child care and early education programs for increased access. Teams are making significant progress on implementation and these historic investments require increased capacity, attention, and action.*
- 2023 Child care and early education legislative summary (mn.gov)

Current cross-agency early care and education landscape

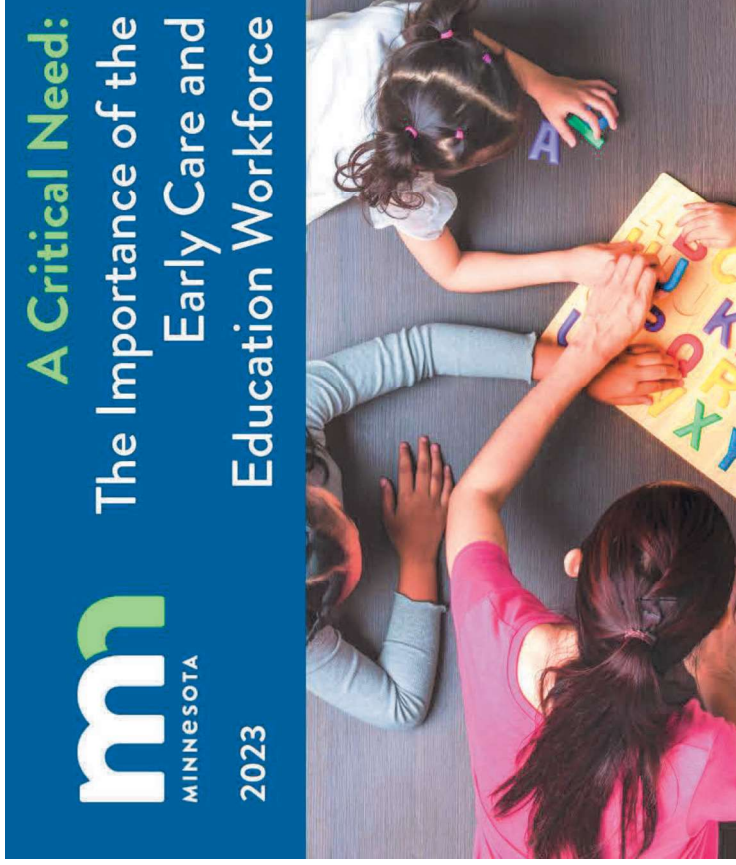
- **Agency-specific functions**
 - MDE – early learning programs, mixed delivery, early learning workforce supports
 - DHS - family supports, provider and program supports, child care licensing
 - DEED – economic development grants, community planning, labor market information and NEW – Office of Child Care Community Partnerships
 - MDH, DPS, OHE, DLI all touch industry in some way as well
- **Interagency coordination**
 - Children’s Cabinet and connected Preschool Development Grant initiatives
 - Coordination and convening
 - Metric tracking and alignment
 - Stakeholder feedback loops
 - Family and provider navigation
 - Eligibility and service coordination

Cross-agency Preschool Development Grant



- Minnesota’s Preschool Development Birth through Five grant is a partnership of the Minnesota Departments of Education, Health and Human Services, along with the [Children’s Cabinet](#) to align education and care systems across the state. The three-year \$26.7 million grant from the [U.S. Department of Health and Human Services](#) supports pregnant families and families with children age 5 and younger.

Focus on the ECE businesses and workforce



- The PDG funded a position at the Children’s Cabinet to better understand and support the business needs of child care in MN.
- Engagement and research led to a [report](#) and recommendations on the importance of the early care and education workforce.
- The DEED Office of Child Care Community Partnerships was recommended after engagement with community, child care businesses, and interagency partners.



Office of Child Care Community Partnerships

Tammy Wickstrom

Director, Office of Child Care Community Partnerships

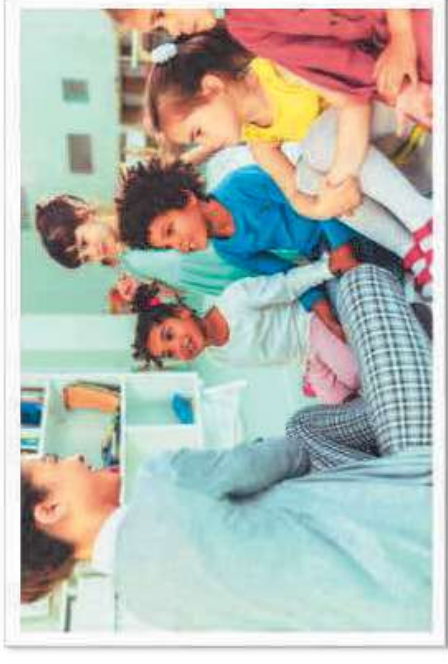
Introducing DEED's New Director of Child Community Partnerships

- Tammy Wickstrom, Director
 - More than 25 years of experience in early childhood and human services.
 - More than 20 years working with Tribal nations in Minnesota and across the country.
 - Master's degree in Family Life Education.
- Experience leading and providing technical support for Head Start, Early Head Start and childcare programs. Experienced in Public Law 102-477, Tribal TANF, Head Start, CCDF, language revitalization efforts and workforce development. Experience writing and receiving multiple federal, state and local grants.
- Live in Northern Minnesota with husband, 2 dogs, 3 cats and 6 chickens. Has 4 children and one grandson who all live within 5 miles.

Office of Child Care Community Partnerships

Office of Child Care Community Partnerships

- **New Director** – Hired in December 2023
- **Office Objectives:**
 - Elevates the leadership of DEED functions and creates capacity and visibility of **child care as an economic and workforce development issue**
 - Supporting small business, public entities, state agencies, providers, families, and other early childhood education professionals to connect to DEED and resources to **build quality and quantity**.
 - Multiple reports indicate the **critical role** quality child care plays in hiring and retaining staff for all businesses.
 - The office hopes to **increase stability and adaptability** in child care across the state.





Office of Child Care Community Partnerships

- The office will serve a leading role in DEED's work partnering with the public and private sectors to **address child care as an economic and workforce development issue** across the state.
- It will work with other state agencies, local units of government, organizations and employers to help find **solutions that work best for each community.**



Child Care Economic Development Grants

- Lack of **affordable, quality child care** is a major barrier to the participation of women, single parents, low-income parents and rural parents in the workforce.
- DEED has record funding to grow child care availability: **\$15 million** in the FY24-25 biennium and **\$3 million** in the FY26-27 biennium.
- This funding will help **create child care slots** through grants to communities for new or expanding child care businesses, facility improvements, worker training, attraction, retention and licensing, and other strategies to reduce the child care shortage.
- **We just opened our largest-ever grant round for this program – RFPs are due by 4pm on March 12.**

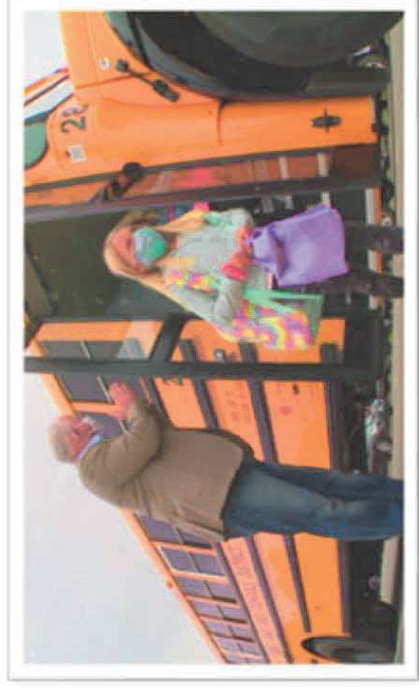
Child Care Economic Development Grants

- Lack of **affordable, quality child care** is a major barrier to the participation of women, single parents, low-income parents and rural parents in the workforce.
- DEED has record funding to grow child care availability: **\$15 million** in the FY24-25 biennium and **\$3 million** in the FY26-27 biennium.
- This funding will help **create child care slots** through grants to communities for new or expanding child care businesses, facility improvements, worker training, attraction, retention and licensing, and other strategies to reduce the child care shortage.
- **We just opened our largest-ever grant round for this program – RFPs are due by 4pm on March 12.**



Women Venture Partnership

DEED has a Partnership with WomenVenture to support child care providers through **business training and materials** that can be used free of charge to start or expand child care business.



- WomenVenture will also provide **grants and loans to child care businesses**.
- Eligible uses of the money include but are not limited to:
 - leasehold improvements
 - remodeling or renovations
 - inventory or supplies
 - machinery or equipment
 - working capital and debt refinancing.

Minnesota Initiative Foundation Grants

- Grants to the **Minnesota Initiative Foundations (MIF)** support **building regional capacity in child care** by:
 - Facilitating community planning
 - Engaging the private sector
 - Providing locally based training and technical assistance
 - Recruiting child care programs to participate in quality rating and improvement programs





Thank you!

We welcome your questions