



# DEPARTMENT OF CORRECTIONS





Mission:

*Transform Lives for a Safer Minnesota*





**MCF-Shakopee**  
built 1986  
capacity: 656



**MCF-Faribault**  
opened 1989  
capacity: 2,026



**MCF-Lino Lakes**  
built 1963  
capacity: 1,325



**MCF-Red Wing**  
built 1889  
capacity: 42-A, 111-J



**MCF-Rush City**  
built 2000  
capacity: 1,018



**MCF-Oak Park Heights**  
built 1982  
capacity: 444



**MCF-St. Cloud**  
built 1889  
capacity: 1,058



**MCF-Stillwater**  
built 1914  
capacity: 1,561



**MCF-Togo**  
built 1955  
capacity: 90



**MCF-Moose Lake**  
built 1938  
capacity: 1,057



**MCF-Willow River**  
built 1951  
capacity: 177



# DOC by the Numbers

**Employees:** approximately 4,300

**Total general fund budget:** \$1.2 billion (FY20 – 21 biennium)

**Prisons:** 11

**Facility capacity:** 9,522 beds (double-bunked)

**Current Population:** 7,800 adults; approx.

**Square feet for facilities:** 7.5 million sq. ft.

**DOC-provided community supervision:** 20,000

**DOC district supervision offices:** 13

# Total DOC Bonding Request: \$111.8 million

1	2	3	4
<b>Asset Preservation</b>  System-wide	<b>Dakota Building Program Space Renovation/ Addition</b>  MCF Faribault	<b>Program Space Addition and Renovation</b>  MCF Shakopee	<b>Program Space Repurposing of E Building</b>  MCF Lino Lakes
<b>\$76 million</b>	<b>\$9.7 million</b>	<b>\$18.4 million</b>	<b>\$7.7 million</b>



Agency  
Priority **1**



## Request: \$76 million

- **82 structures in crisis or poor condition**
- **Ensure safety** of correctional officers, staff, incarcerated individuals, and the public
- **Over \$650 million in deferred maintenance**
- **Corrections asset preservation requests need 5-10% cash** included to ensure security system components (which are often not bondable) are included



*MCF-Stillwater  
Industry  
Building*



*Windows in  
Living Units*

# Why Asset Preservation is DOC

Agency  
Priority **1**



DOC is 96% funded  
by the General  
Fund.



There are 4  
facilities that are  
over 100 years old.











Individuals work  
and live in DOC  
buildings 24/7/365



Facilities must be safe  
and secure spaces to  
help create successful  
public safety outcomes.

# DOC Priority: Programming & Treatment Space

 	 	 	 
<p><b>Asset Preservation</b></p> <p>System-wide</p>	<p><b>Dakota Building Program Space Renovation/ Addition</b></p> <p>MCF Faribault</p>	<p><b>Program Space Addition and Renovation</b></p> <p>MCF Shakopee</p>	<p><b>Program Space Repurposing of E Building</b></p> <p>MCF Lino Lakes</p>
<p><b>\$76 million</b></p>	<p><b>\$9.7 million</b></p>	<p><b>\$18.4 million</b></p>	<p><b>\$7.7 million</b></p>



# Focus on Person-Centered Services



Person  
Centered  
Approach

- **Putting people at the center of our decision-making.**
- **See individuals, not collectives.**
- **Multi-disciplinary teams work with the people we serve to design and deliver transformational services.**

# Minnesota's Incarcerated Population

## Demographics

- Average age (in years): 39.3
- Over 73% graduated HS/ have GED
- Over 18% have college degree
- Approximately 70% have minor children in the community
- **Race**
  - White: 52%
  - Black: 36%
  - American Indian: 9%
  - Asian: 2.5%
  - Unknown/Other: 0.3%

## Data Points for Public Safety Policy Makers

- **25%** of those leaving MN prisons are homeless
- **39** people died of drug overdose within a year of release in 2020
- **27%** unemployment rate for formerly incarcerated
- **1 in 6 kids** in MN have had a parent incarcerated – the most prevalent ACE
- **\$141.22** = average per diem cost to incarcerate an adult in Minnesota prison



# Dakota Building Restoration/Addition- Faribault

**\$9.7 million**

Demolition of a crumbling 2-story brick building

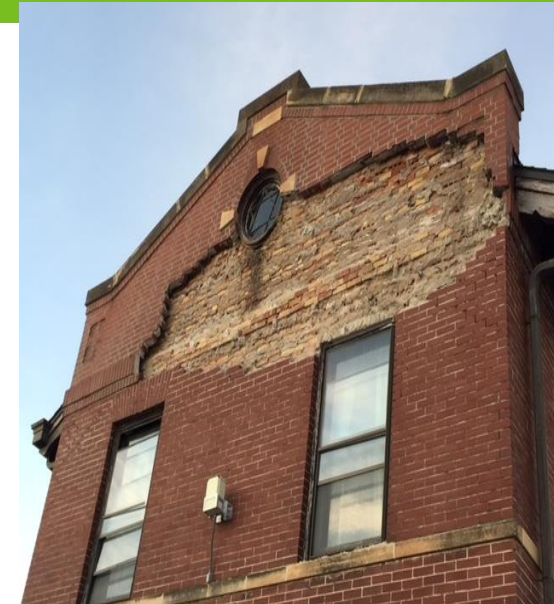
Add 4,400 sf for transformational service delivery

- Needs more space for treatment, education, other services
- Mitigate unsafe conditions
- Extend the useful life of the building
- Resolve water infiltration issues
- \$954K previously approved for design only

## TIMELINE



August 2023 – June 2025



*Dakota Building – Minimum Security*



Agency  
Priority **3**

# Program Space Expansion/ Renovation - Shakopee

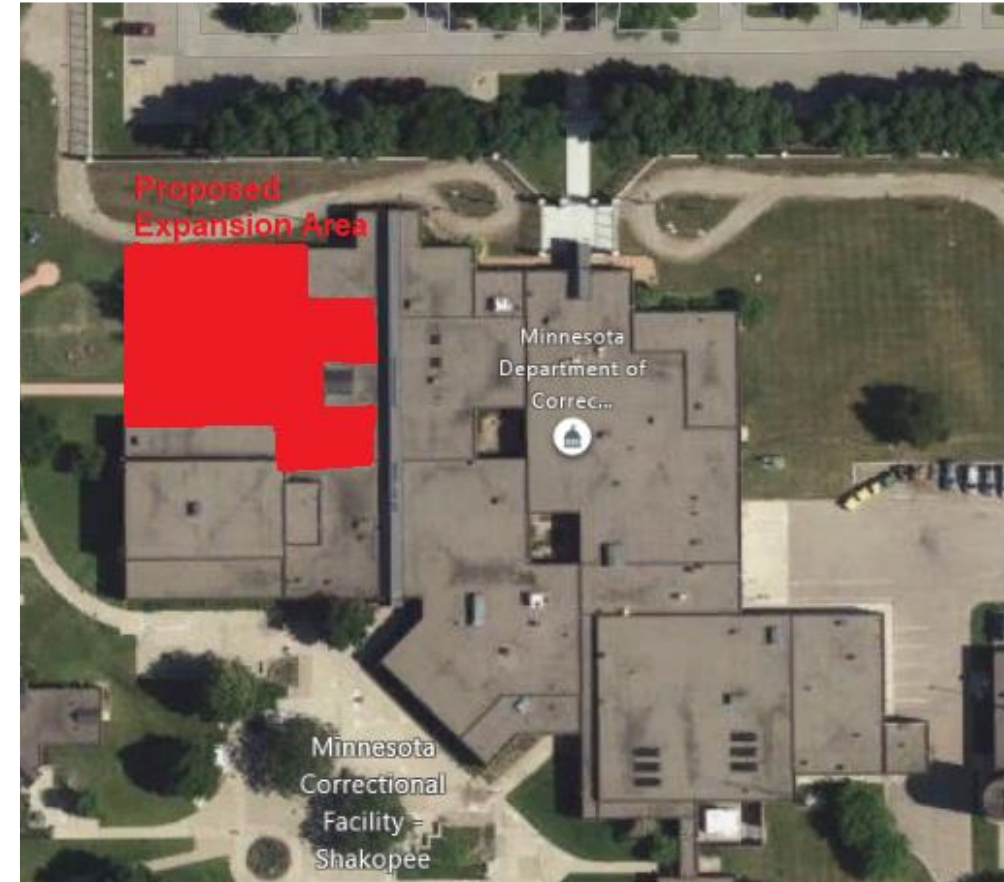
**\$18.4 million**

Proposed  
building  
expansion of  
14,500 sf with  
6,400 sf of  
interior  
renovation

- Expand and renovate to accommodate more programming and support functions such as treatment, education, and family support.
- **Only women's prison** – needs sufficient space with population change.

## TIMELINE

○ ————— ○  
**November 2023 – February 2025**



*Shakopee Core Building*

Agency  
Priority

4

# Program Space Repurposing of E Building – Lino Lakes

**\$7.7 million**

Repurpose an underutilized, existing building

Existing E Building is approximately 8,400 square feet

- Repurpose a long vacant building as program space for treatment
- Upgrade life safety, mechanical and electrical systems

## TIMELINE

○ — ○  
**October 2023 – January 2025**



*Lino Lakes – E Building*

Over **95%** of those incarcerated will return to our communities. Setting them up for success helps ensure fewer victims and greater public safety.





# See the Work Firsthand - Consider a Tour!

Visit Minnesota's Correctional Facilities

Contact [emily.lefholz@state.mn.us](mailto:emily.lefholz@state.mn.us)