



Our Story

This project began the year of Charles Hofmann's death in 2009. Visiting the estate sale, I was privileged to meet the family and invited to tour the honey house with a group of other curious attendees. Standing in the magnificent structure I was moved by the story Larry Hofmann was sharing with us as we climbed to the second, then third floor of the structure. I'd never seen anything like it. Little did we know, Larry and Jan Hofmann and myself would embark on a quest to document the activity and the relating structures so the story could be shared with generations to come. Hofmann Apiaries was nominated for the National Register of Historic Places in 2015. The State Review Board accepted the Nomination in November 2015. Finally in January 2016, approval came from the Washington DC office of the Secretary of the Interior. *It's official!*

We look forward to working with the Hofmann family in offering interpretive programming and events for everyone to enjoy.

**Joan Mooney, Co-Executive Director
Waseca County Historical Society
(507)-835-7700**

director@historical.waseca.mn.us

What We've Done

The Minnesota Arts and Cultural Heritage Fund grants program provides funding for the Historic Evaluation and the Nomination for listing on the National Register of Historic Places (NRHP). Gaining this designation qualifies Hofmann Apiaries for future funding opportunities through this grants program. In 2015 we completed the Interpretive Plan. This framework provides structure for site use, educational programs and interpretive exhibits.



This project has been financed in part with funds provided by the State of Minnesota through the Minnesota Historical Society from the Arts & Cultural Heritage Fund.

Immediate Priorities 2016

- The Honey House and the Wax Shed are in need of window and roof repair and replacement. These two structures are most important for implementing interpretive displays and exhibits.
- Even more critical is the need to provide forage for pollinators—our bees—by planting a pollinator garden and Alsike clover.

L-R: Jan Hofmann, Larry Hofmann with Tom Church



FUNDING for Capital Improvements
Honey House Roof, Honey House windows, Wax Shed Roof, soffit repairs, Paint, Wax Shed Windows.
Goal -\$106,250

VOLUNTEERS
Gardeners to plant pollinator gardens
Hosts for preliminary events
Volunteer Coordinator

To Donate!

To make a tax-deductible donation, make check payable:

**“The Waseca County Historical Society”
and note**

“Hofmann Apiaries Capitol Improvement Fund”
And mail to Waseca County Historical Society, 315
2nd Avenue NE, Waseca, MN 56093.

If you have any questions, please contact
Joan Mooney, 507-835-7700 or email
joanm@historical.waseca.mn.us

**The Waseca County Historical Society is a
Minnesota 501c3 Non-profit Organization.**
Donations are tax deductible.
THANK YOU!

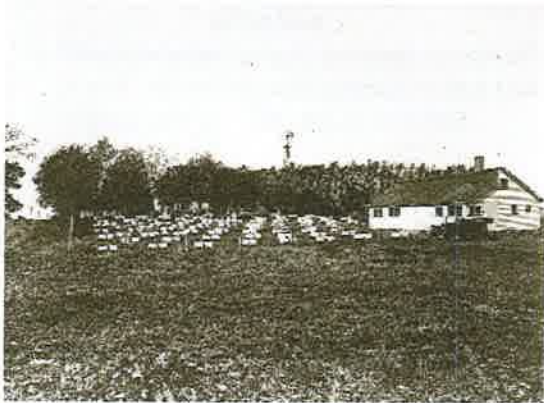
Visit Hofmann Apiaries:
www.hofmannapiaries.org

Visit WCHS:
www.historical.waseca.mn.us

The Waseca County Historical Society is partnering with the Hofmann family in the restoration and preservation of this National Register of Historic Places property.

Did you know ...

- Hofmann Apiaries is the only apiary in the state of Minnesota listed on the National Register?
- Hofmann Apiaries is the only apiary in the United States listed in operation?
- Honey bees pollinate the flowers of 1/3 of all fruits and vegetables, contributing over \$14 billion to the value of U.S. crop production.
- Many crops would cease to exist without honey bees at bloom time.



Waseca County Historical Society
315 NE 2nd Avenue
P.O. Box 314
Waseca MN 56093



4661 420th Avenue, Janesville, MN 56048

OUR MISSION:

For the preservation of honey bees through the support and encouragement of small scale beekeepers, through education, forage expansion and community outreach.



Larry and Jan Hofmann

In collaboration with

Waseca County Historical Society

A Minnesota 501c3 Nonprofit Organization