

2020 Bonding Recommendation

Metropolitan Council Environmental Services

Inflow & Infiltration Grants : \$5 Million

House Water Division
February 24, 2020





MCES Wastewater System



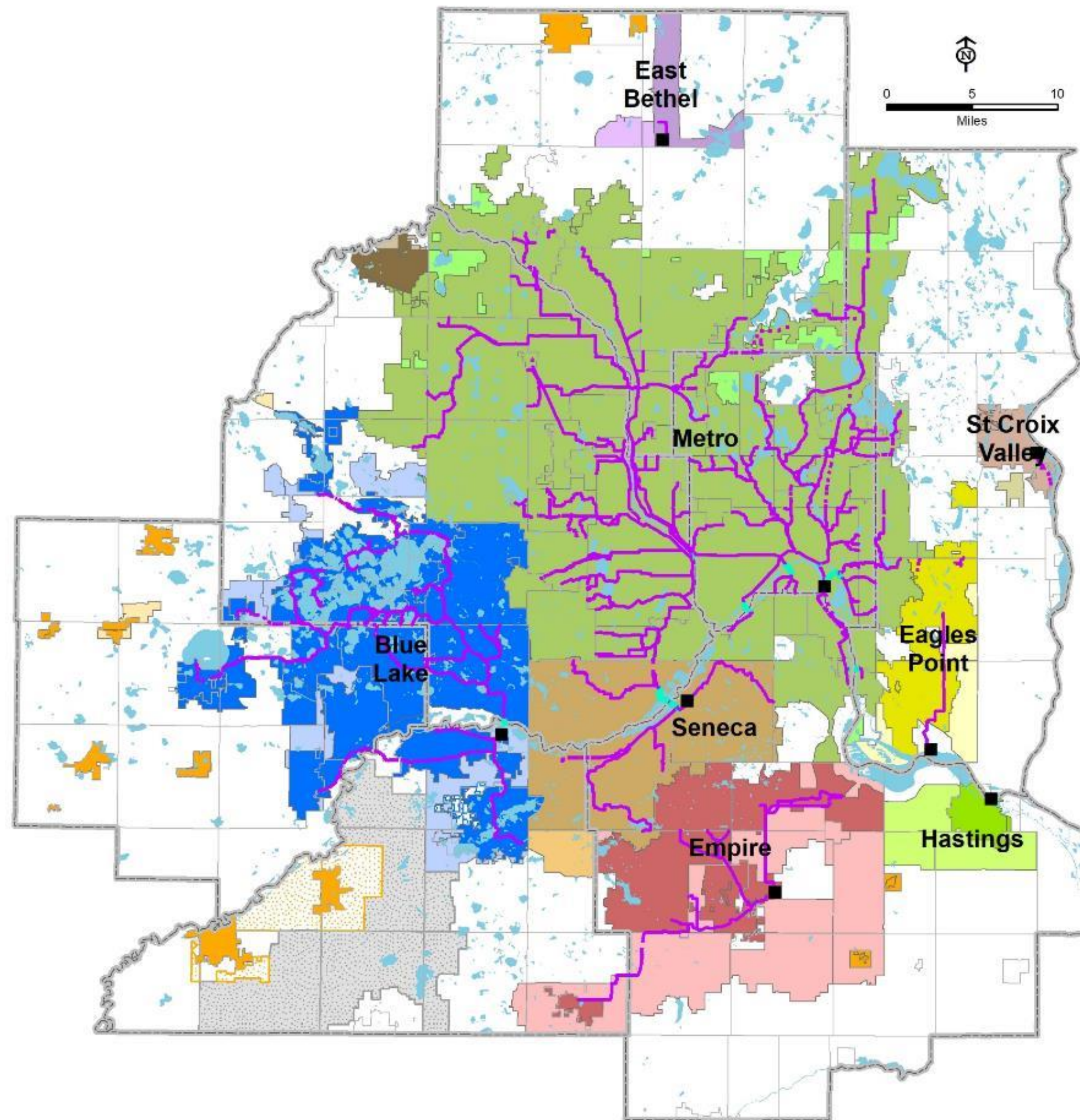
Protects public health and safety



Protects the environment



Fosters the economic growth of the region



WHO WE SERVE

7-county Twin Cities Metro Area

110 communities

2,700,000+ people

OUR FACILITIES

9 wastewater treatment plants

610 miles of interceptors

250 million gallons per day (average)

OUR ORGANIZATION

600+ employees

\$7 billion in valued assets

\$150 million / yr capital program

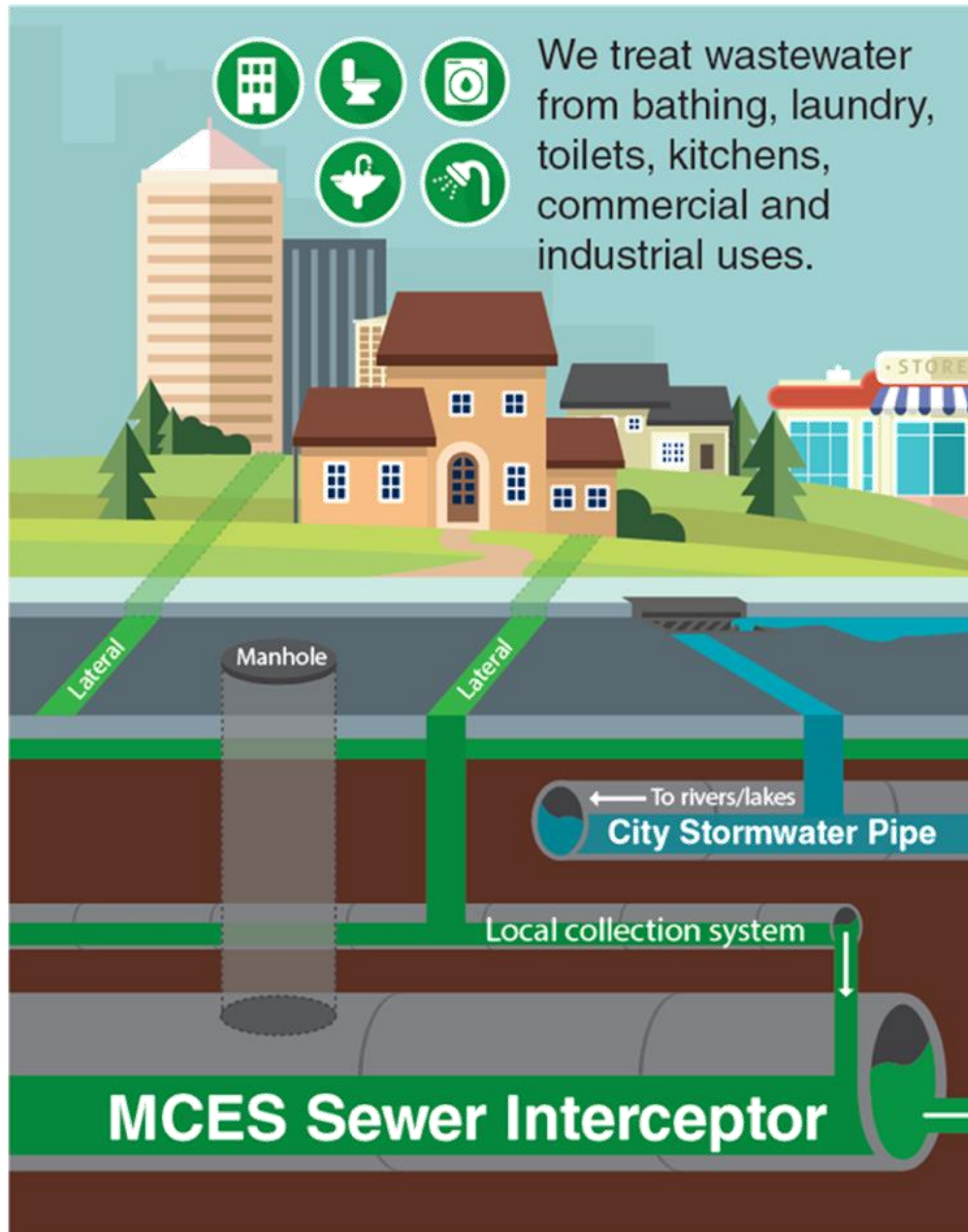
MCES Serves ~50% of the State's Population

Inflow & Infiltration

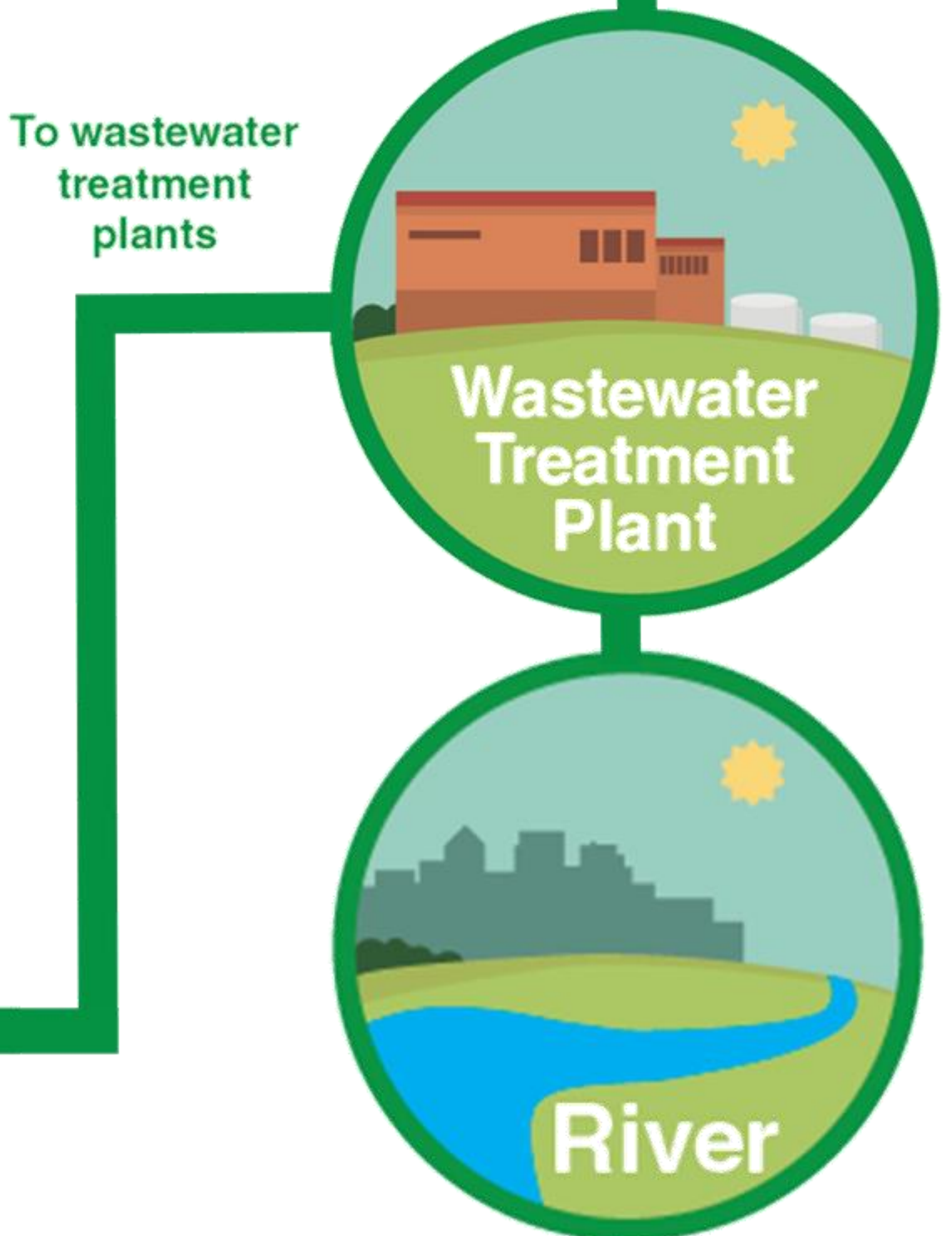
- Inflow & infiltration (I/I) is clear water that enters the wastewater collection system.
- Costly to unnecessarily treat clear water along with wastewater.
- When the system is overwhelmed with I/I, untreated wastewater can back up into properties or be released into the environment.
- Bonds would fund grants to be distributed to municipalities for capital improvements to public wastewater infrastructure to reduce I/I.



Regional and Local Wastewater Systems



Our treatment process removes pollutants by converting them to small volume of organic solids, and returns clean water to the environment.



Communities Served are Customers & Partners

Public Infrastructure Grant Program

- Governor's 2020 Recommendation: \$5 Million
- Grants for capital improvements to reduce I&I into municipal wastewater collection systems
- Cities are eligible if:
 - They have been identified as an excessive I/I contributor, or
 - Have a measurable flow rate within 20% of the allowable flow limit.
- Grant funding up to 50% of I&I portion of project cost



Communities Impacted By I/I

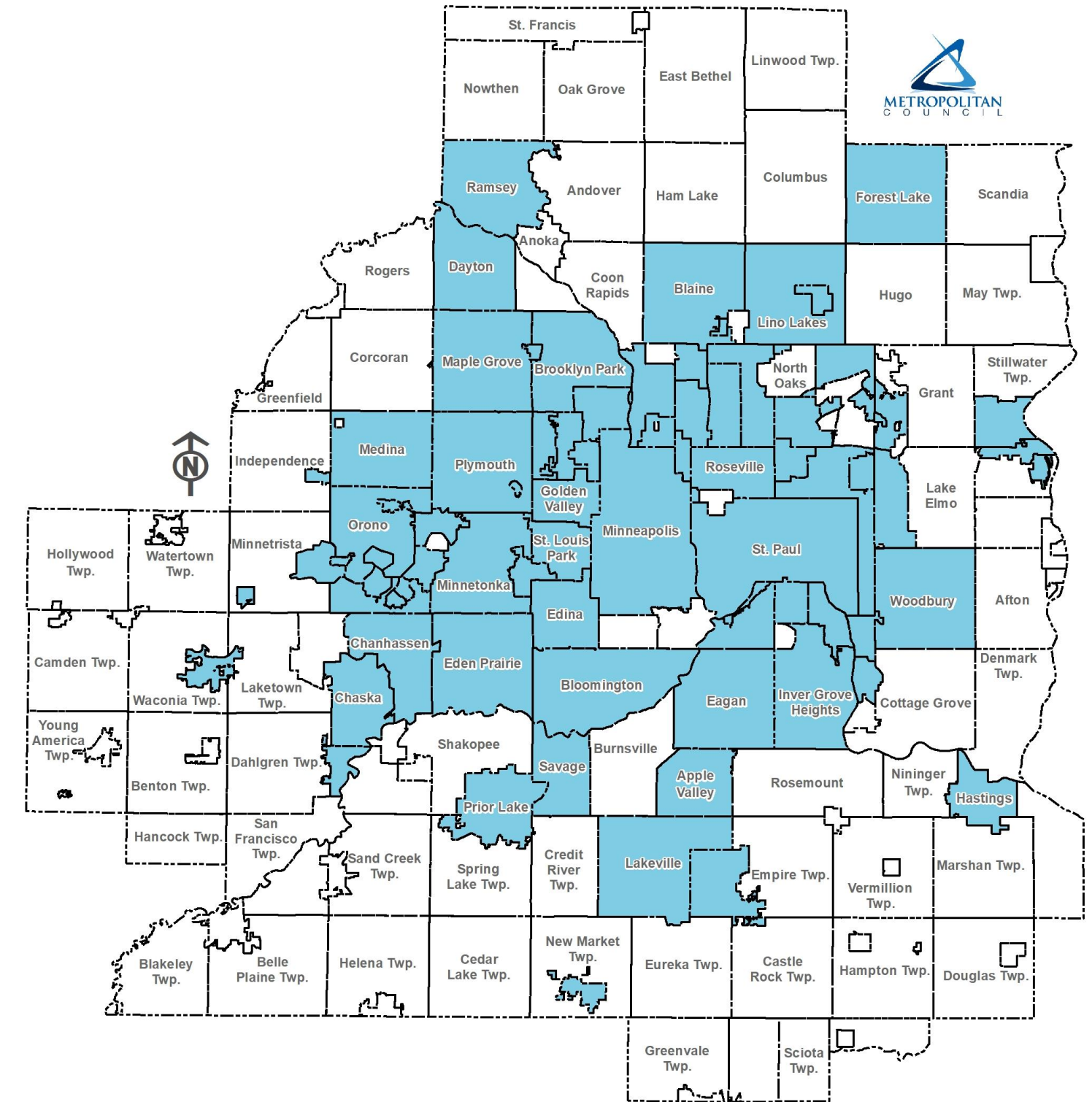
81 COMMUNITIES

Apple Valley
 Arden Hills
 Bayport
 Birchwood
 Blaine
 Bloomington
 Brooklyn Center
 Brooklyn Park
 Carver
 Centerville
 Chanhassen
 Chaska
 Columbia Heights
 Crystal
 Dayton
 Deephaven
 Eagan
 Eden Prairie
 Edina
 Elko-New Market
 Excelsior

Farmington
 Forest Lake
 Fridley
 Golden Valley
 Greenwood
 Hastings
 Hopkins
 Inver Grove Heights
 Lakeville
 Lauderdale
 Lexington
 Lilydale
 Lino Lakes
 Little Canada
 Long Lake
 Mahtomedi
 Maple Grove
 Maple Plain
 Maplewood
 Medicine Lake
 Medina

Mendota
 Mendota Heights
 Minneapolis
 Minnetonka
 Minnetonka Beach
 Mound
 Mounds View
 New Brighton
 New Hope
 Newport
 North St. Paul
 Oak Park Heights
 Oakdale
 Orono
 Osseo
 Plymouth
 Prior Lake
 Ramsey
 Robbinsdale
 Roseville
 Savage

Shoreview
 Shorewood
 South St. Paul
 Spring Park
 St. Anthony
 St. Bonifacius
 St. Louis Park
 St. Paul
 St. Paul Park
 Stillwater
 Spring Park
 Tonka Bay
 Vadnais Heights
 Waconia
 Wayzata
 West St. Paul
 White Bear Township
 Woodbury





Grant Distribution Method

Two Part Process

Part 1 – Funding (minimum amount)

Part 2 – Allocation distribution of remaining funds



City	Total Project Costs:	Amt Eligible for Funding:	Part 1 Funding	Remaining Eligible Balance:	Part 2 Allocation %	Part 2 Funding	Final Reimbursement
City 1	\$ 11,500,000	\$ 4,125,000	\$ 25,000	\$ 4,100,000	83.2%	\$ 3,409,523	\$ 3,434,523
City 2	\$ 1,200,000	\$ 300,000	\$ 25,000	\$ 275,000	83.2%	\$ 228,688	\$ 253,688
City 3	\$ 145,000	\$ 50,000	\$ 25,000	\$ 25,000	83.2%	\$ 20,790	\$ 45,790
City 4	\$ 20,000	\$ 5,000	\$ 5,000	\$ -	83.2%	\$ -	\$ 5,000
Total:	\$ 12,865,000	\$ 4,480,000	\$ 80,000	\$ 4,400,000		\$ 3,659,000	\$ 3,739,000



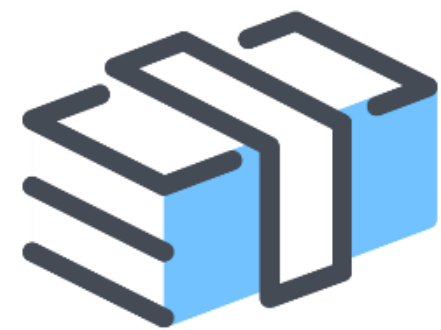
I/I Program Goals



Protect Public Health by avoiding backup of sewage into basements



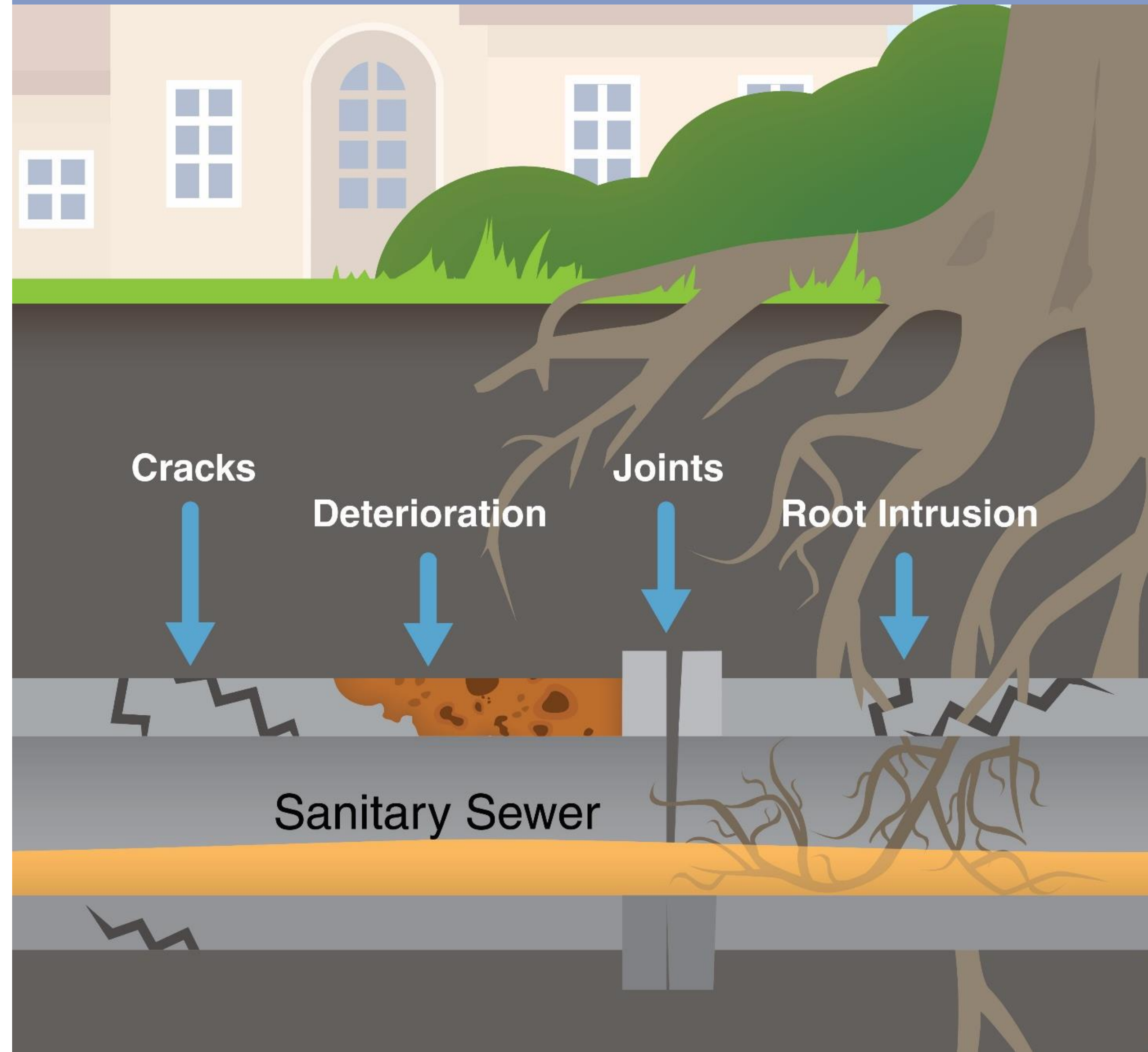
Protect Water Quality by avoiding spills to lakes and rivers



Maintain Economic Efficiency by avoiding unnecessary expansion of sewers and treatment plants

Keep clear water out of the wastewater

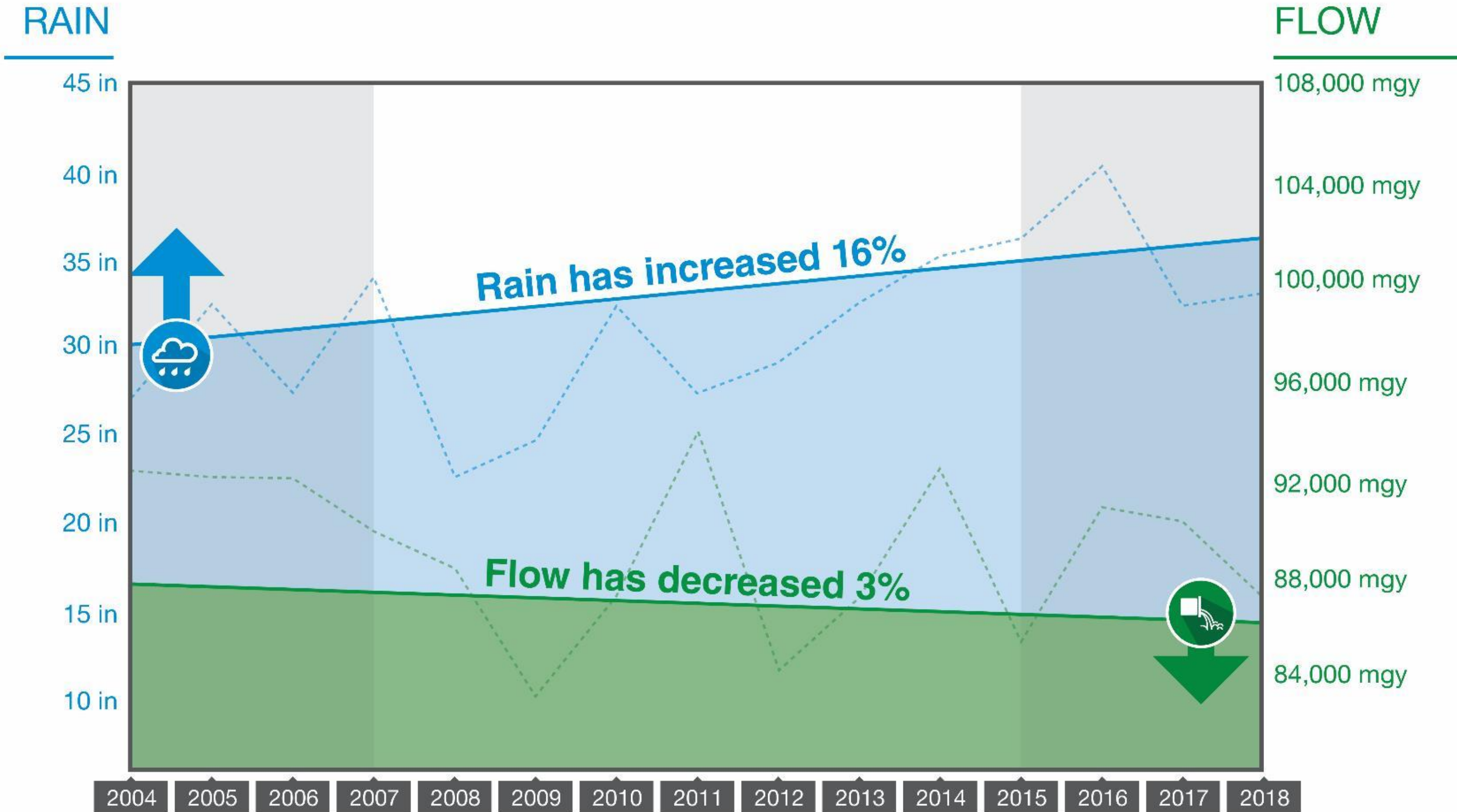
Clear water – stormwater and groundwater – through I/I sources enters the wastewater systems. Excessive I/I increases the need to build larger and more expensive sewer pipes and treatment facilities.





Inflow/Infiltration Mitigation Program

The region's population increased 10% from 2005-2016



Key to public and environmental health, and wastewater affordability.

Questions?

Kyle L. Colvin, PE
Manager, Engineering Programs
651-602-1151
kyle.colvin@metc.state.mn.us

