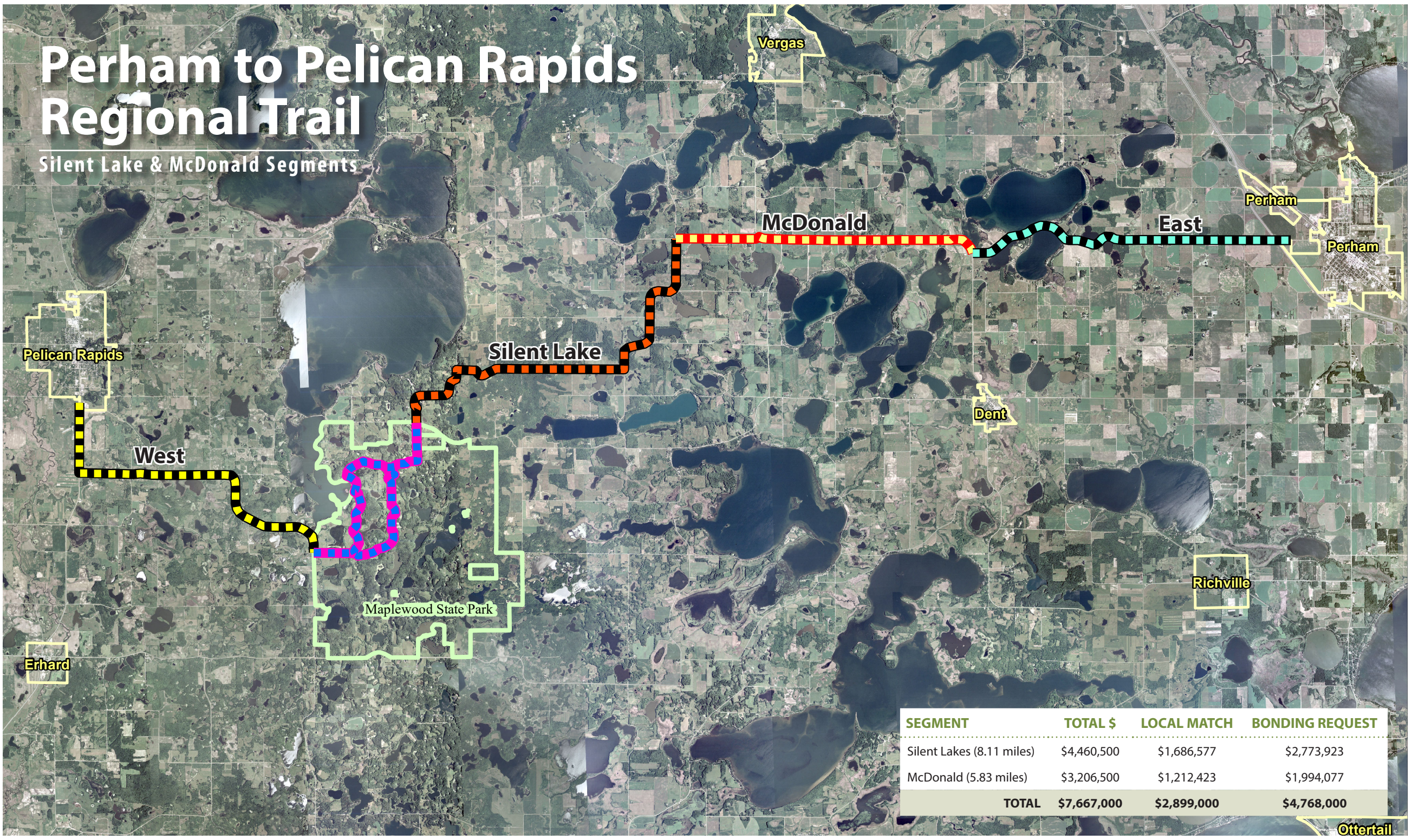
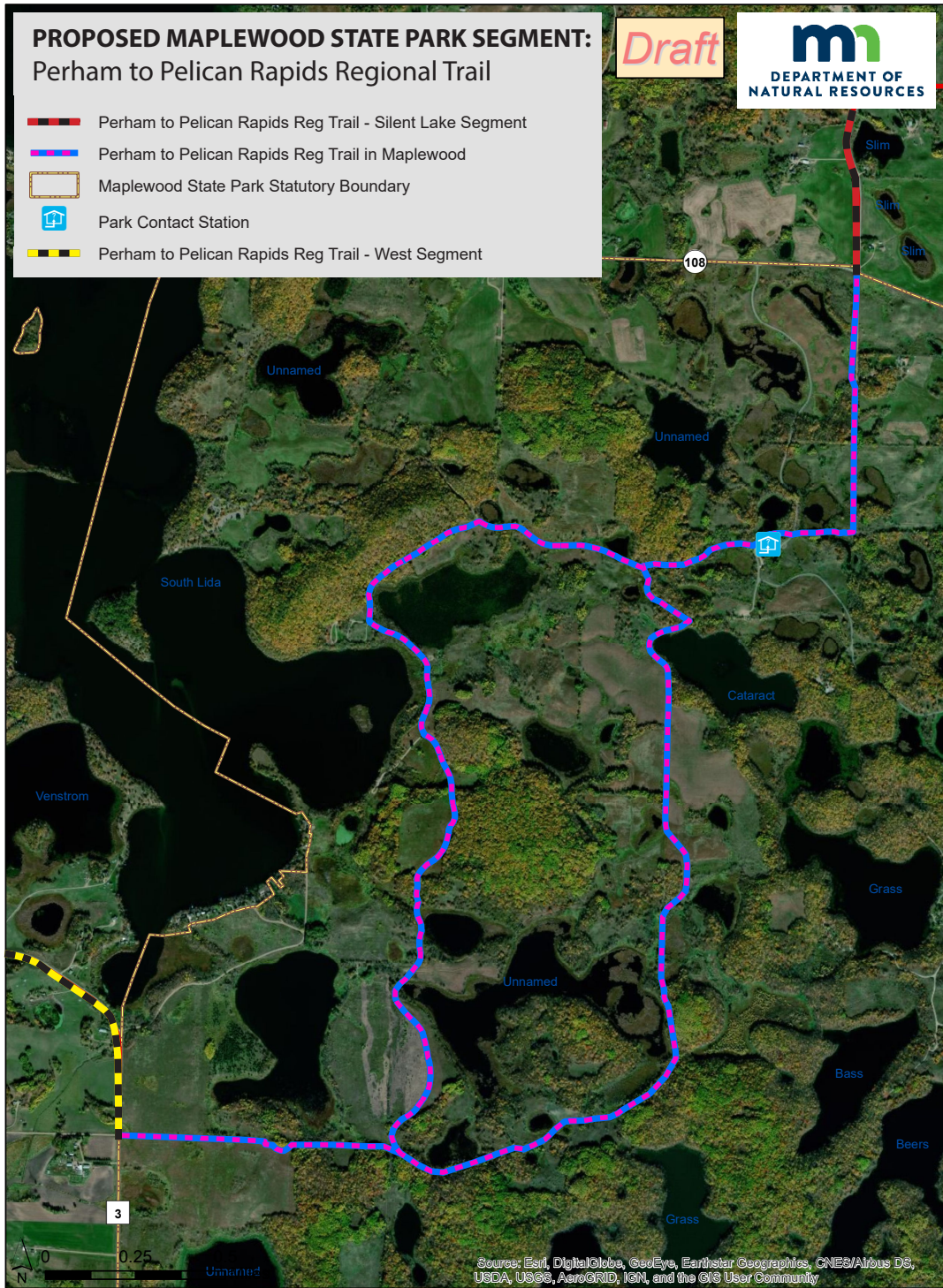


Perham to Pelican Rapids Regional Trail

Silent Lake & McDonald Segments



SEGMENT	TOTAL \$	LOCAL MATCH	BONDING REQUEST
Silent Lakes (8.11 miles)	\$4,460,500	\$1,686,577	\$2,773,923
McDonald (5.83 miles)	\$3,206,500	\$1,212,423	\$1,994,077
TOTAL	\$7,667,000	\$2,899,000	\$4,768,000



OTTER TAIL COUNTY - MINNESOTA

**PERHAM TO PELICAN RAPIDS
REGIONAL TRAIL**

SILENT LAKE & MCDONALD SEGMENTS
House File 849 (Nornes) | Senate File 1000 (Ingebrigtsen)

OVERVIEW

The Perham to Pelican Rapids Regional Trail will provide an exciting pedestrian connection between the Cities of Perham and Pelican Rapids via Maplewood State Park. Currently, residents and visitors to north Otter Tail County have limited access to off-road, paved trails that support bicycle and pedestrian mobility and connect with one of the state's premier parks, Maplewood State Park. The Perham to Pelican Rapids Regional Trail will expand multi-modal transportation and recreation access to vital recreation and employment sites in Otter Tail County, providing economic development, safety, and mobility benefits.

IMPORTANT CONNECTIONS

Relative to other areas of the state, west-central Minnesota has fewer trails of statewide significance. Two state trails are located within or adjacent to Otter Tail County. The Central Lakes Trail extends through south Otter Tail County to Fergus Falls. North of Otter Tail County, the Heartland Trail extends from Walker to Park Rapids, with a planned extension west to Moorhead through Detroit Lakes. The Perham to Pelican Rapids Regional Trail will fill a gap in the state and regional trail system in west central Minnesota.

