

# City of Rochester



## 2019 Legislative Priorities

## **Willow Creek/Gamehaven Regional Trail Connection Project**

### **Funding Request**

This project request is for \$1.5 million in Capital Investment to support the connection of important regional facilities to the City's existing trail network and to provide connectivity to 1041 households within half a mile and 2716 households within a mile. This would also provide linkage to the Bluestem Regional Trail being developed to the south. The overall project cost is \$3 million

### **Background**

The City of Rochester has a well-developed network of river trails with approximately 40 miles of paved multi-use trails along the rivers and creeks that bisect the city, providing most areas of the city with an interconnected network of off-road multi-use pedestrian and bicycle trails. However, currently the southern quadrant of the City of Rochester, referred to as the Willow Creek area, is not connected to the River Trails network due to barrier effect created by US Highway 52, which effectively isolates Willow Creek neighborhoods from other neighborhoods and the existing trail network. This same isolation impacts the State designated 460 acre Gamehaven Regional Park and the connection between the path and trail network in Willow Creek to the larger city network of trails. The proposed alignment of the Willow Creek generally would follow the historic alignment of the Winona and Western Railroad (long abandoned) between Rochester and Stewartville and provide potential benefits to the long term development of the State Trail System including the Bluestem Trail.

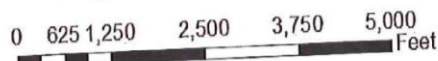


**City of Rochester Legislative Priorities- Adopted 12/17/18**

Document Path: F:\MAPPING\GIS\ROCHINFO\Parcel\_Information.mod Date Saved: 7/25/2017 1:08:14 PM



**City of Rochester, MN**



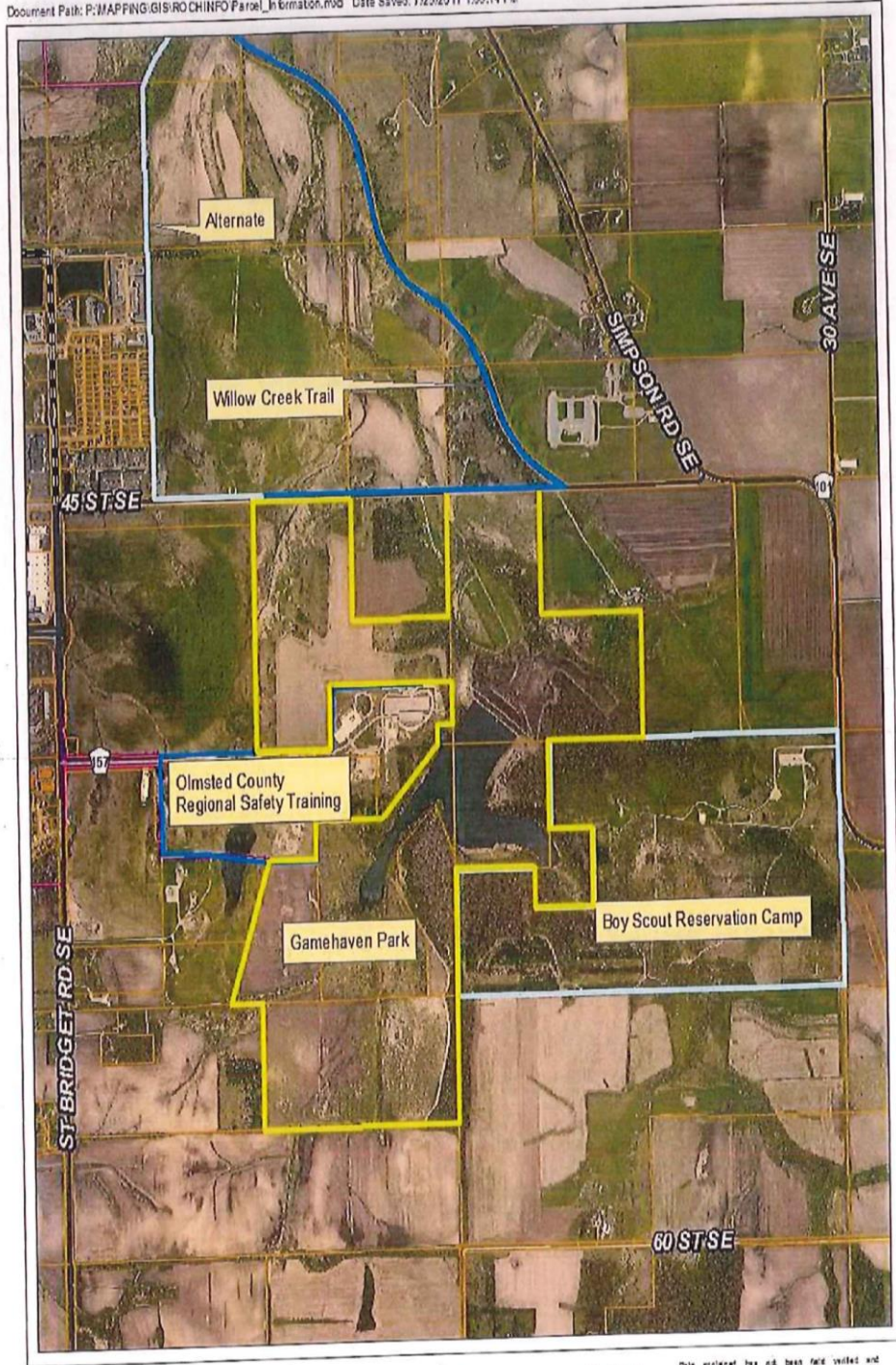
Data contained here has been field verified and should be used as reference only. It is the users responsibility to take existing easements, locations, drawings, etc. to construct desired design.

The City of Rochester expressly disclaims all warranties, express or implied, including but not limited to digital cartographic data for a particular purpose with respect to the information contained on this map. The City of Rochester shall have no liability with respect to any loss or damage directly or indirectly arising out of the use of this data.

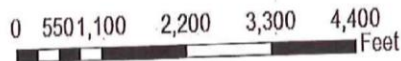


**City of Rochester Legislative Priorities- Adopted 12/17/18**

Document Path: P:\MAPPING\GIS\ROCHINFO\Parcel\_Information.mxd Date Saved: 7/25/2017 1:00:14 PM



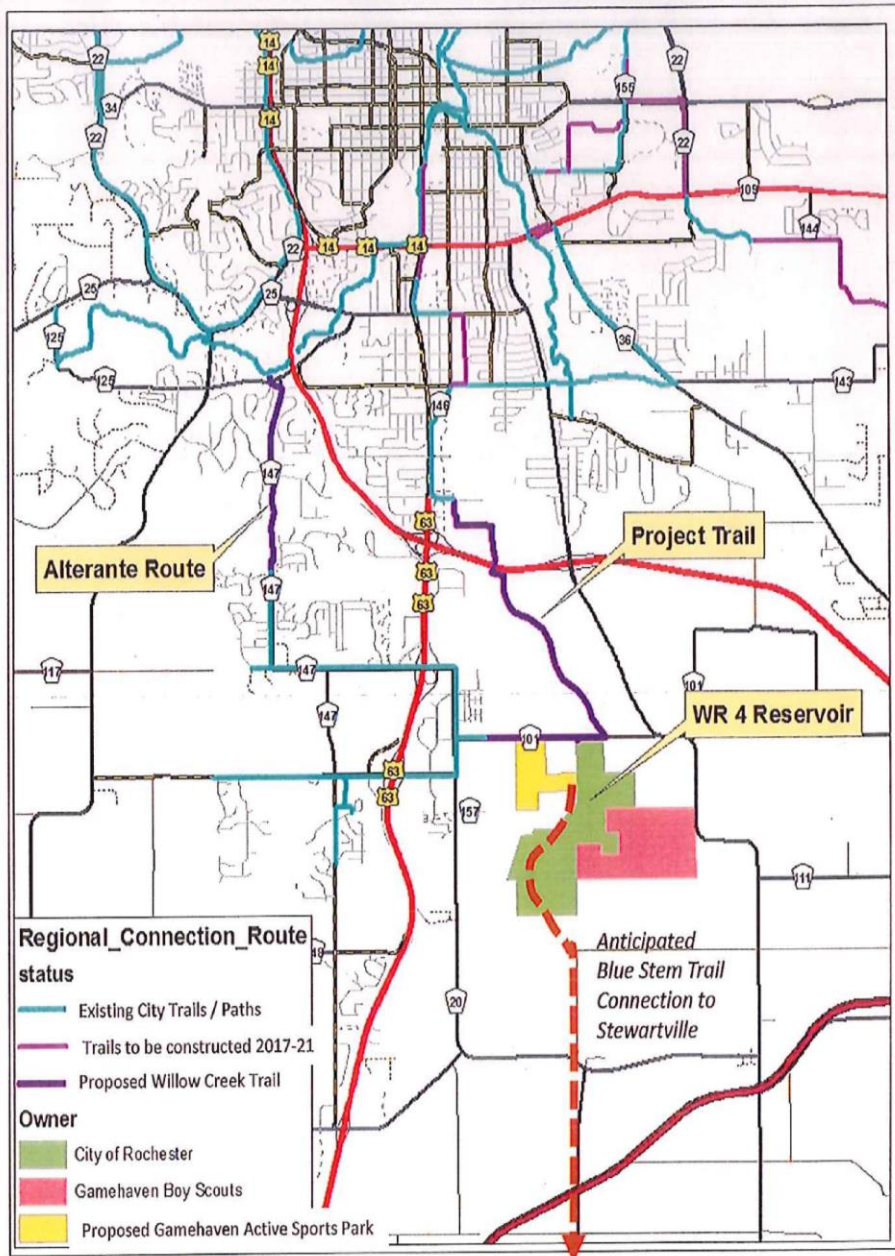
**City of Rochester, MN**



Data contained here has not been field verified and should be used as reference only. It is the users responsibility for field verifying accuracy. Incorrect drawings may be created. Always check.

The City of Rochester specifically disclaims all warranties, express or implied, including but not limited to, original ownership of these for a particular purpose, with respect to the information contained on this map. The City of Rochester shall have no liability with respect to any loss or damage directly or indirectly arising out of the use of this data.





**Location Map**

**City of Rochester, MN  
Trail and Park Location**



This Document can be made available in alternative formats upon request

State of Minnesota

HOUSE OF REPRESENTATIVES

NINETY-FIRST SESSION

H. F. No. 384

01/28/2019 Authored by Sauke, Pierson and Liebling
The bill was read for the first time and referred to the Committee on Ways and Means

1.1 A bill for an act
1.2 relating to capital investment; appropriating money for the Willow Creek Trail
1.3 connection in Rochester; authorizing the sale and issuance of state bonds.

1.4 BE IT ENACTED BY THE LEGISLATURE OF THE STATE OF MINNESOTA:

1.5 Section 1. WILLOW CREEK TRAIL CONNECTION; ROCHESTER.

1.6 Subdivision 1. Appropriation. \$2,500,000 is appropriated from the bond proceeds fund
1.7 to the commissioner of natural resources for a grant to the city of Rochester to predesign,
1.8 design, construct, furnish, and equip a paved trail to extend the Rochester Trail network
1.9 approximately 2.5 miles from 28th Street S.E. to Gamehaven Regional Park and the future
1.10 extension of the Bluestem Trail to Stewartville. This appropriation is available when the
1.11 commissioner of management and budget determines that sufficient resources have been
1.12 committed from nonstate sources to complete the project.

1.13 Subd. 2. Bond sale. To provide the money appropriated in this section from the bond
1.14 proceeds fund, the commissioner of management and budget shall sell and issue bonds of
1.15 the state in an amount up to \$2,500,000 in the manner, upon the terms, and with the effect
1.16 prescribed by Minnesota Statutes, sections 16A.631 to 16A.675, and by the Minnesota
1.17 Constitution, article XI, sections 4 to 7.

1.18 EFFECTIVE DATE. This section is effective the day following final enactment.