

January 31, 2019

Metropolitan Council Environmental Services and Regional Parks Overview

House Environment & Natural Resources
Finance Division



Metropolitan Council



**Community
Development**



**Metro
Transit**



**Transportation
Services**



**Environmental
Services**






Metropolitan Council Environmental Services (MCES)

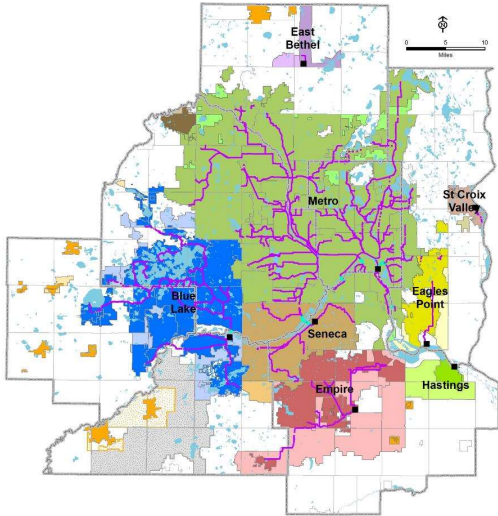
Mission: Provide wastewater services and integrated planning to ensure sustainable water quality and water supply for the metropolitan region


Vision: Be a valued leader and partner in water sustainability






MCES Wastewater System






Protects public health and safety



Protects the environment




Fosters the economic growth of the region

WHO WE SERVE
 7-county Twin Cities Metro Area
 109 communities
 2,700,000+ people

OUR FACILITIES
 8 wastewater treatment plants
 610 miles of interceptors
 250 million gallons per day (avg)


OUR ORGANIZATION
 600+ employees
 \$7 billion in valued assets
 \$150 million /yr capital program

MCES Serves ~50% of the State's Population

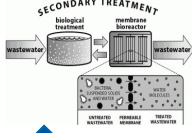


Protecting Human Health & the Environment

1880 Direct sewer discharge



1966 2nd treatment



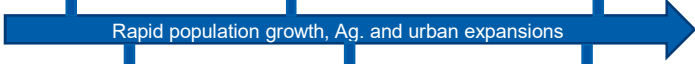
**1984 Denitrification
2000 Bio-P removal**




The Mississippi National River and Recreation Area



Rapid population growth, Ag. and urban expansions



1938 Metro WWT

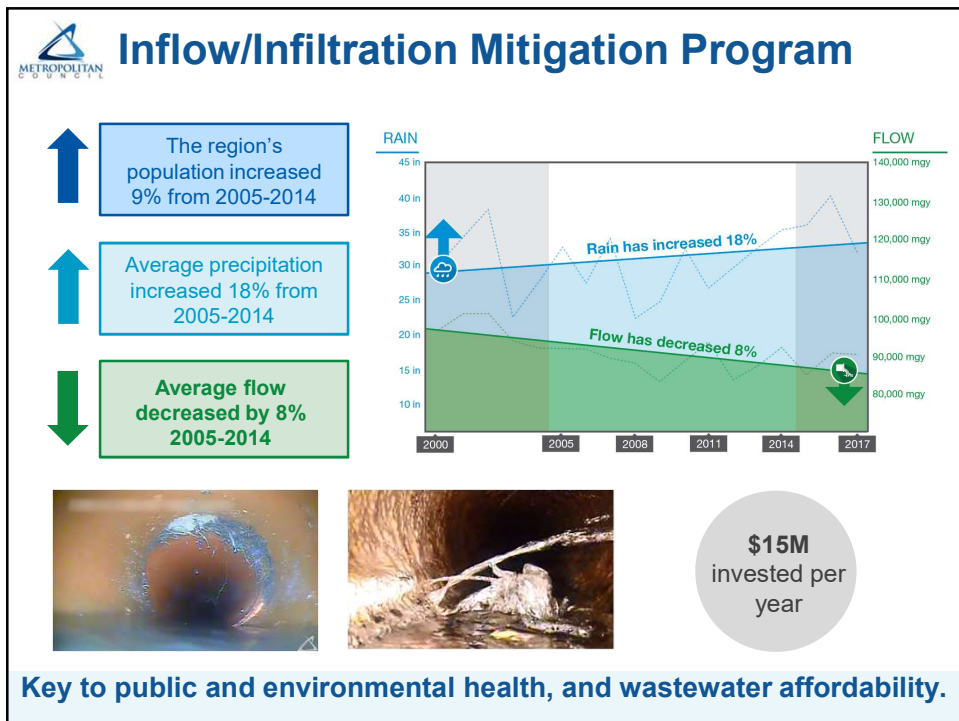
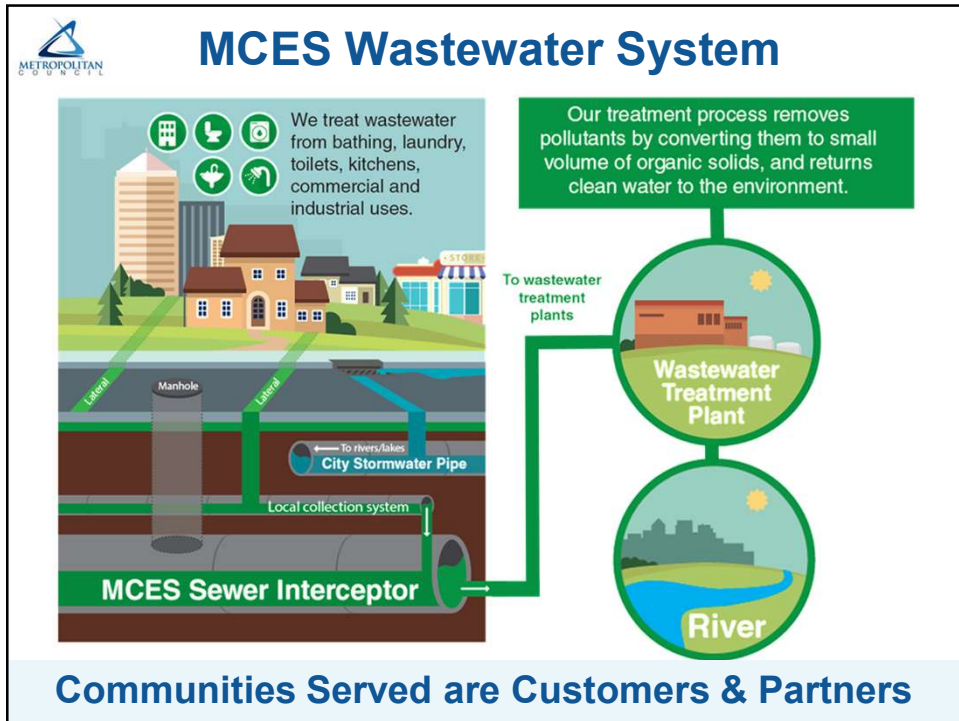


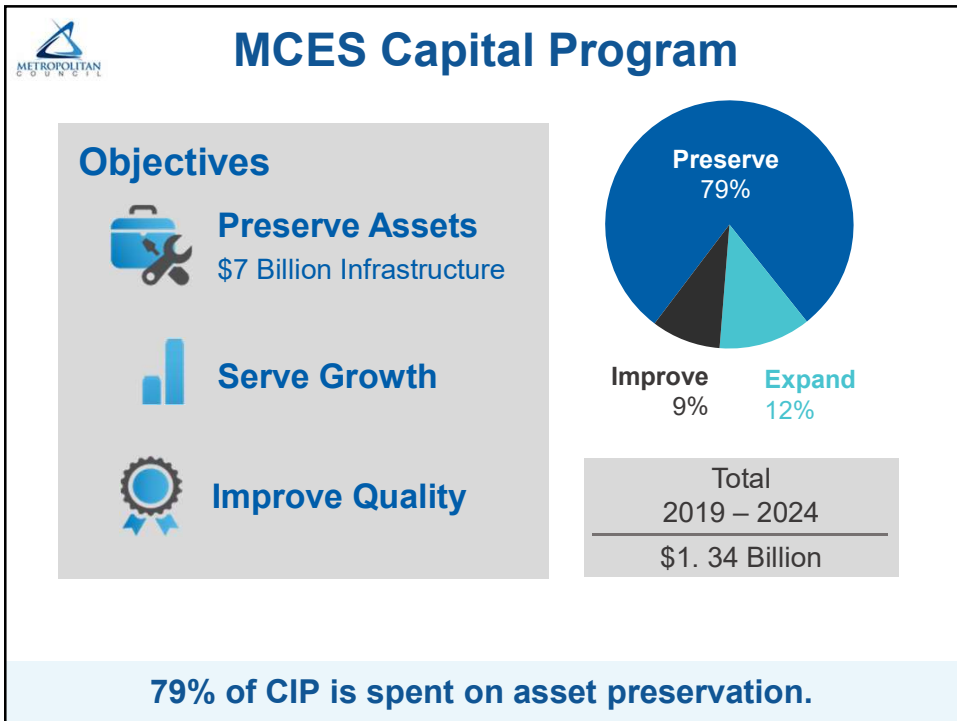
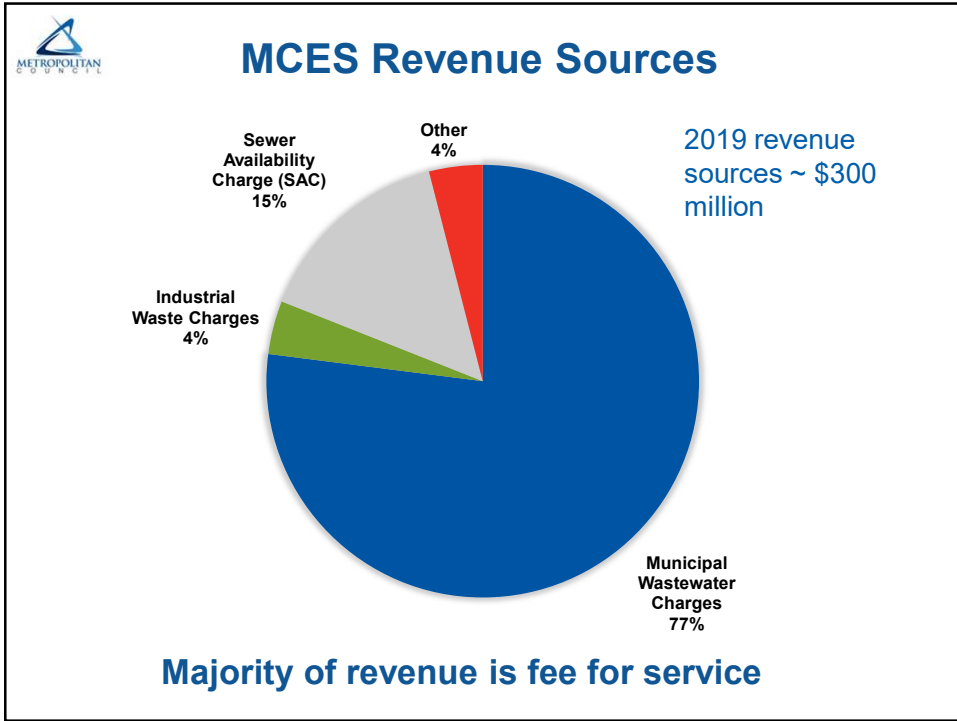
1972 Clean Water Act



1985 CSO







Water Resources Planning

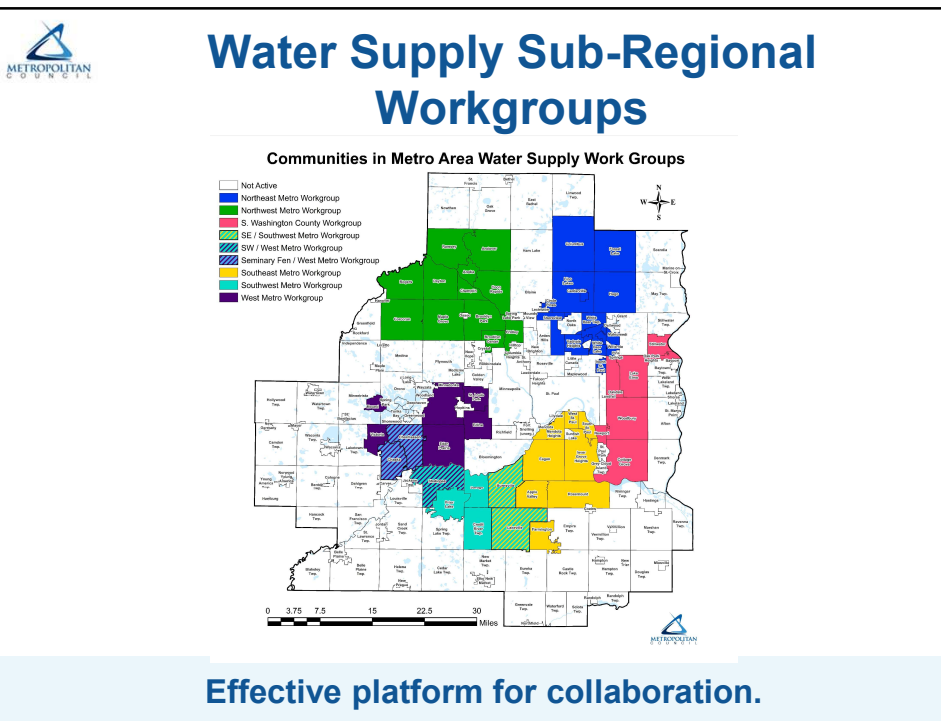
Adequate water supplies are essential for our region's growth, livability and prosperity.

- Metropolitan Council Role in Regional Water Supply Planning
 - Produce a regional water supply plan
 - Support local government units making informed and effective decisions
 - Assist communities in developing and implementing local plans
 - Identify approaches for emerging issues
 - Maintain strong collaborative relationships with stakeholders

- Metropolitan Area Water Supply Advisory Committee
 - Municipalities/utilities, counties, state agencies
 - Collaborate with Council on planning
 - Work informed by technical advisory committee



11





1974 Metropolitan Parks Act

Metropolitan Council shall:

- Identify generally the areas, which together with State facilities, will meet the outdoor recreation needs of the people of the metropolitan area
- Establish criteria and priorities for the allocation of funds for acquisition and development.



Cottage Grove Ravine
Regional Park—
Washington County

Minn. Statute 473.147



Regional Park Implementing Agencies

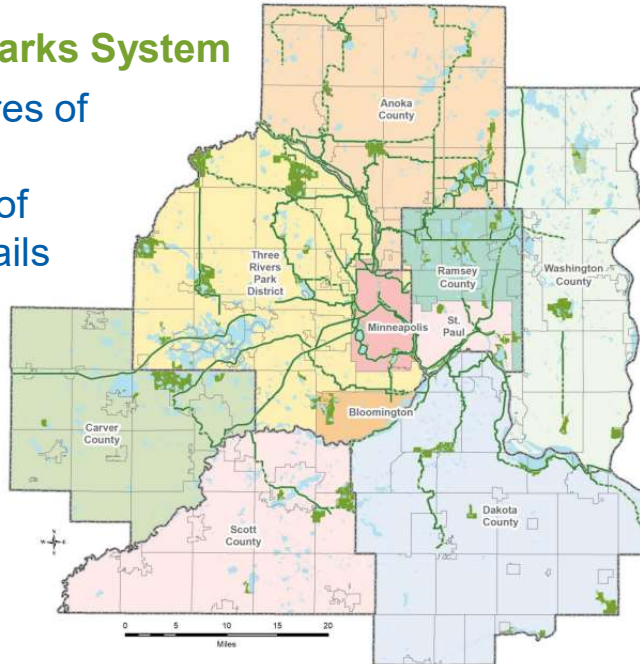
- Anoka County
- Carver County
- Dakota County
- Ramsey County
- Scott County
- Washington County

- Bloomington
- Minneapolis Park & Recreation Board
- St. Paul
- Three Rivers Park District



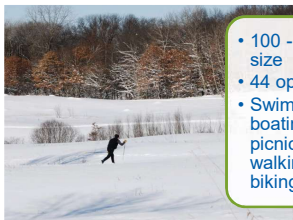
Regional Parks System

- 54,400 acres of park land
- 389 miles of regional trails



Types of Regional Parks

Regional Park



- 100 - 500 acres in size
- 44 open
- Swimming, boating, picnicking, walking, and biking on trails

Park Reserve



- 1,000 – 5,000 acres in size
- 12 open
- 80% natural habitat, environmental education, nature centers, campgrounds, walking/biking trails

Regional Trail



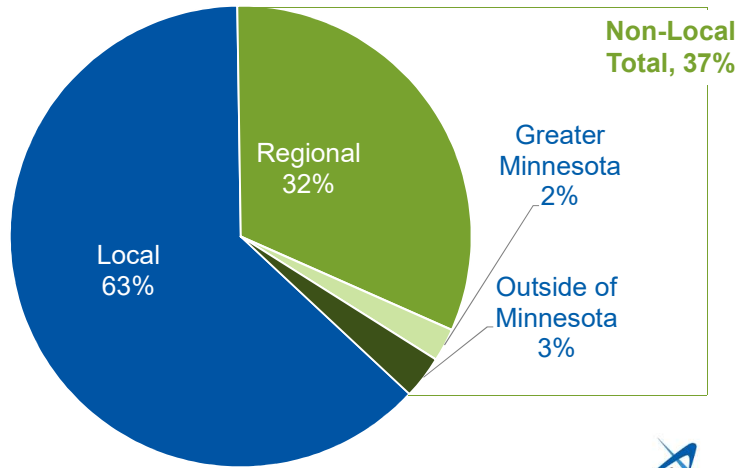
- 389 miles
- 49 open
- Walking, biking, inline skating, commuting

Special Recreation Feature



- Variable Size
- 8 open
- Unique recreation management or programming

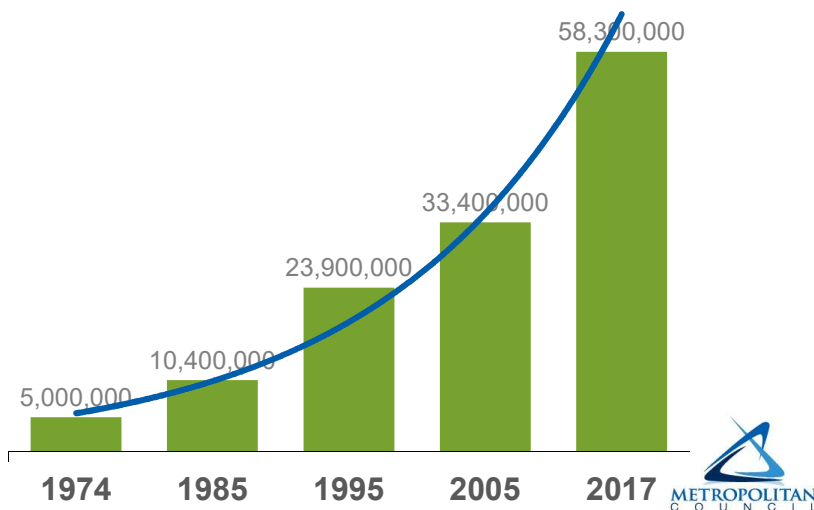
Regional Parks Serve the Residents Across the Region and the State



Visitors to the Regional Parks System, 2017



Visits to the Regional Parks System have grown between 1974 and 2017



Regional Parks Grant Programs

Program	Funding Source Distribution Methodology	
Operations & Maintenance	State Formula	<ul style="list-style-type: none">6 grant programs are funded by multiple state sources and Council bondsCouncil passes through 100% of state funding to Parks Implementing AgenciesCurrent portfolio is over 150 grants valued at ~\$120M\$185M in grants are programmed in the current Council Authorized Capital Improvement Program (2019-2024)
Parks & Trails Legacy	State matched by Council bonds Formula	
Parks Acquisition	State matched by Council bonds Part Legacy, Part ENRTF 1st come, 1st served	
Bonding	State matched by Council bonds Formula	



Thank you!

Questions?

