



**House Water Division  
Legislative Water Commission**

**February 4, 2019**

**Co-chairs: Senator Wiger  
*Representative Torkelson***

**Jim Stark, Director**

# Legislative Water Commission

- **REVIEW** policy reports & recommendations
- **RECOMMEND** legislation
- **SHARES** data and information with LCCMR, CWC, legislative standing committees
- **COORDINATES**

# 12 Elected Members

Body	First Name	Last Name	Party	District	Home
Sen	Paul	Anderson	R	44	Plymouth
Rep	Jeff	Brand	DFL	19A	St. Peter
Sen	Rich	Draheim	R		Madison Lake
Sen	Kent	Eken	DFL	4	Twin Valley
Rep	Peter	Fischer	DFL	43A	Maplewood
Rep	Glenn	Gruenhagen	R	18B	Glencoe
Sen	Chris	Eaton	DFL	40	Brooklyn Center
Rep	Todd	Lippert	DFL	20B	Northfield
Rep	John	Poston	R	9A	Lake Shore
Rep	Paul	Torkelson*	R	16B	Hanska
Sen	Bill	Weber	R	22	Luverne
Sen	Chuck	Wiger*	DFL	43	Maplewood

# 13 Recommendations

- 1) Inflow and Infiltration-- Wastewater
- 2) Healthy Soil/Healthy Water
- 3) Water Infrastructure
- 4) Peer review of wastewater standards
- 5) Reducing excess Chloride
- 6) Continuation of the LWC
- 7) Keeping Water on the Land
- 8) Data, information, Education and Public Awareness
- 9) Preserving and protecting our lakes
- 10) Expanded source water programs
- 11) Increase drinking water protection Fee
- 12) Statewide Water Policy
- 13) Educational Curriculum- Water- K-12

# Pathway to Recommendations



# Step 1: Review of reports and existing recommendations

Prepared in cooperation with the White Bear Lake District Office, Minnesota Pollution Control Agency, Minnesota Department of Natural Resources, Minnesota Department of Water and Soil Resources, Twin Cities Metropolitan Council, and the Groundwater/Surface-Water Interaction Partners



**Minnesota's Groundwater**  
Is our use sustainable?  
*A Freshwater Society special report*

White Bear Lake water levels  
2003 - 2013

U.S. Department of the Interior  
U.S. Geological Survey

**INSIDE:**  
Our conclusions  
Over-pumping  
Areas of concern  
Groundwater  
**U.S. Geological Survey Circular 1106**  
Enforcement shortcomings undermine sustainability effort. Page 19

**USGS**  
science for a changing world

**Sustainability of Ground-Water Resources**

**Water and Water Resource**  
Survey Circular 1139

**U.S. Geological Survey Circular 1106**

Who's missing?  
Rank (H,L)  
Are they actionable- Move the table?  
Appropriate for Legislation/ Funding/ Agency or  
Stakeholder Resource?  
Consensus  
Report back:  
Top Issues (1-2) and missing list  
40 minutes

# Five Stakeholder meetings

- About 100 recommendations





# Ranking Recommendations



A group of 3D white figures, some standing with arms crossed and others in conversation, with several colorful thought bubbles floating above them. The text "Survey follow-up" and "450 individuals" is overlaid in the center.

**Survey follow-up**  
**450 individuals**

# 13 Recommendations

(not in priority order)

- 1) Expanded source water protection
- 2) Reducing excess chloride
- 3) Water Sustainability: Data, information, Education
- 4) Increase drinking water protection fee
- 5) Keeping Water on the Land
- 6) Inflow and Infiltration
- 7) Continuation of the LWC
- 8) Healthy Soil/ Healthy Water
- 9) K-12 Water Education
- 10) Preserving and protecting our lakes
- 11) Peer review of wastewater standards
- 12) Water Infrastructure
- 13) Statewide Water Policy



## Recommendations based on:

- Review of reports and previous recommendations over 20 years
- LWC member discussions
- Discussions with agencies
- Stakeholders workshops
- Broad survey of stakeholder community
- Consensus recommendations by LWC



## Recommendations focus on these goals:

- **Clean and sustainable drinking water**
- **Protecting and improving water**
- **Preparing for the future**

## Recommendations:

- Represent statewide water priorities
- Are bi-partisan in nature
- Focus on incentives rather than regulations
- Build on minor changes to agency programs
- Present minor budgetary impact
- Focus on first-steps and pilot programs
- May lead to agency program enhancements
- Some require emphasis on long-term issues

## Recommendations can be used for:

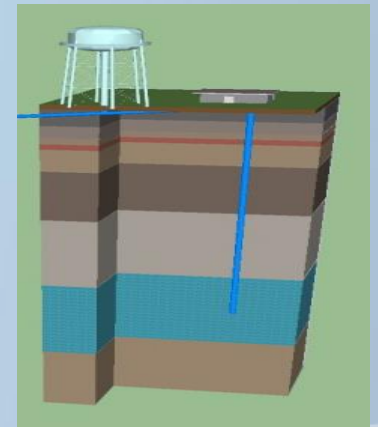
- Legislative funding recommendations
- Support for proposed stakeholder bills
- Funding recommendations for agencies
- Support for agency programs

# Recommendation Summary

- 1) Inflow and Infiltration-- Wastewater
- 2) Healthy Soil/Healthy Water
- 3) Water Infrastructure
- 4) Peer review of wastewater standards
- 5) Reducing excess Chloride
- 6) Continuation of the LWC
- 7) Keeping Water on the Land
- 8) Data, information, Education and Public Awareness
- 9) Preserving and protecting our lakes
- 10) Expanded source water programs
- 11) Increase drinking water protection Fee
- 12) Statewide Water Policy
- 13) Educational Curriculum- Water- K-12

# 1) Expand Source-Water Protection

- **Why? Private wells and rivers that provide drinking water need to be protected**
- **What's needed? Legislation for monitoring and protection measures**





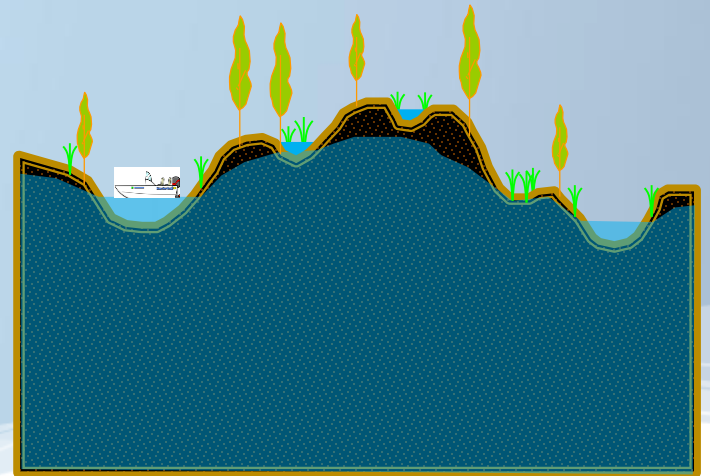
## **2) Reducing excess chloride in our waters**

- **Why? We overuse deicers/impair our waters**
- **What's needed? Bill for training and limits on liability for trained applicators**



# 3) Water Sustainability

- **Goal: Provide clean and sustainable groundwater**
- **Why? Adequate water is needed for drinking, and to support lakes and streams**
- **What 's needed: Funds for monitoring, assessment and planning**



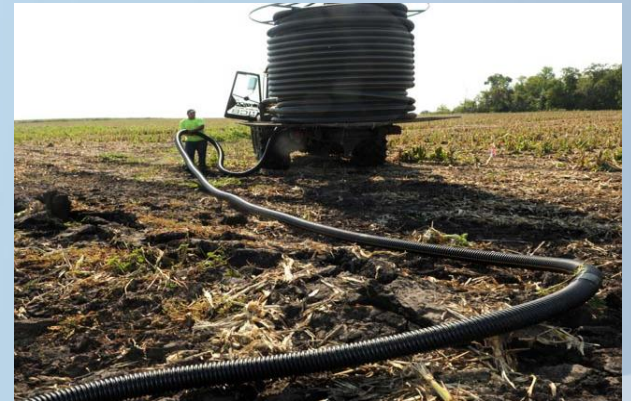
## 4) Increase drinking water protection fee

- **Outcome: Update MDH drinking water connection fee**
- **Why? Fees protect safe drinking water**
- **What's needed? Bill to increase fee**



## 5) Water Retention- Keeping Water on the Land

- **Outcome: Keep more water on the land**
- **Why? Water retention improves agriculture and water**
- **What's needed? Bill to support the important agricultural practices**



## **6) Inflow and Infiltration**

**Outcome: Fix our leaking sewers**

**Why? Leaks increase treatment costs, impair water**

**What 's needed? Bill allowing resources to be used by sanitary districts**



# 7) Continuation of the Legislative Water Commission

- **Outcome: Continuation of the Commission**
- **Why? Water is vital, Legislature needs to be informed**
- **What 's needed? Bill to continue the Commission**



## **8) Healthy Soil/Healthy Water**

- **Outcome: Promote healthy soil/healthy water**
- **Why? Healthy soil provides benefits for agriculture and water**
- **What's needed? Bill to provide planning, outreach and research**



# 9) K-12 Water Education

- **Outcome: Increase water education**
- **Why? It is currently not adequate**
- **What's needed: Bill to connect teachers with experts**





# 10) Preserving and Protecting Minnesota's Lakes

- **Outcome: Protect and preserve our lakes**
- **Why? Lakes are important and threatened resources**
- **What 's needed: Funds for a preservation plan, as a first step**



## **11) Peer Review of Wastewater Standards**

- **Outcome: Peer review of water quality standards**
- **Why? Ensures scientific and public comment**
- **What's needed: Bill to memorialize current MPCA practice into statute**



## **12) Water Infrastructure (waste, storm and drinking water)**

- **Outcome: Address aging and failing water infrastructure**
- **Why? Our water infrastructure is old and is failing**
- **What's needed? Funding and support for facilities upgrades and management**



## **13) State Water Policy: Plan for an Uncertain Future**

- **Outcome: Plan for an uncertain future**
- **Why? As a state we need to plan to mitigate and harden infrastructure**
- **What 's needed? Direction to prepare a plan as a first step**



# **Recommendations: Progress and Next Steps**

- **Meetings with committee leaders**
- **Discussions with agency staff**
- **Draft bills**
- **Bill sponsors**

A serene sunset scene over a calm lake. The sun is a bright, glowing orb on the horizon, casting a long, shimmering reflection down the center of the water. The sky is a soft gradient of orange and yellow. In the background, a dark silhouette of a forest lines the shore. On the right side, a dark, leafy tree branch hangs into the frame. The overall mood is peaceful and contemplative.

**Thanks!**

**Questions?**