

Metropolitan Council's Role in Regional Transportation

House Transportation Finance and Transportation Policy
Committees and Senate Transportation Policy and Finance
Committee Joint Hearing

January 17, 2017



Metropolitan Council Overview

Adam Duininck, Chair
Metropolitan Council

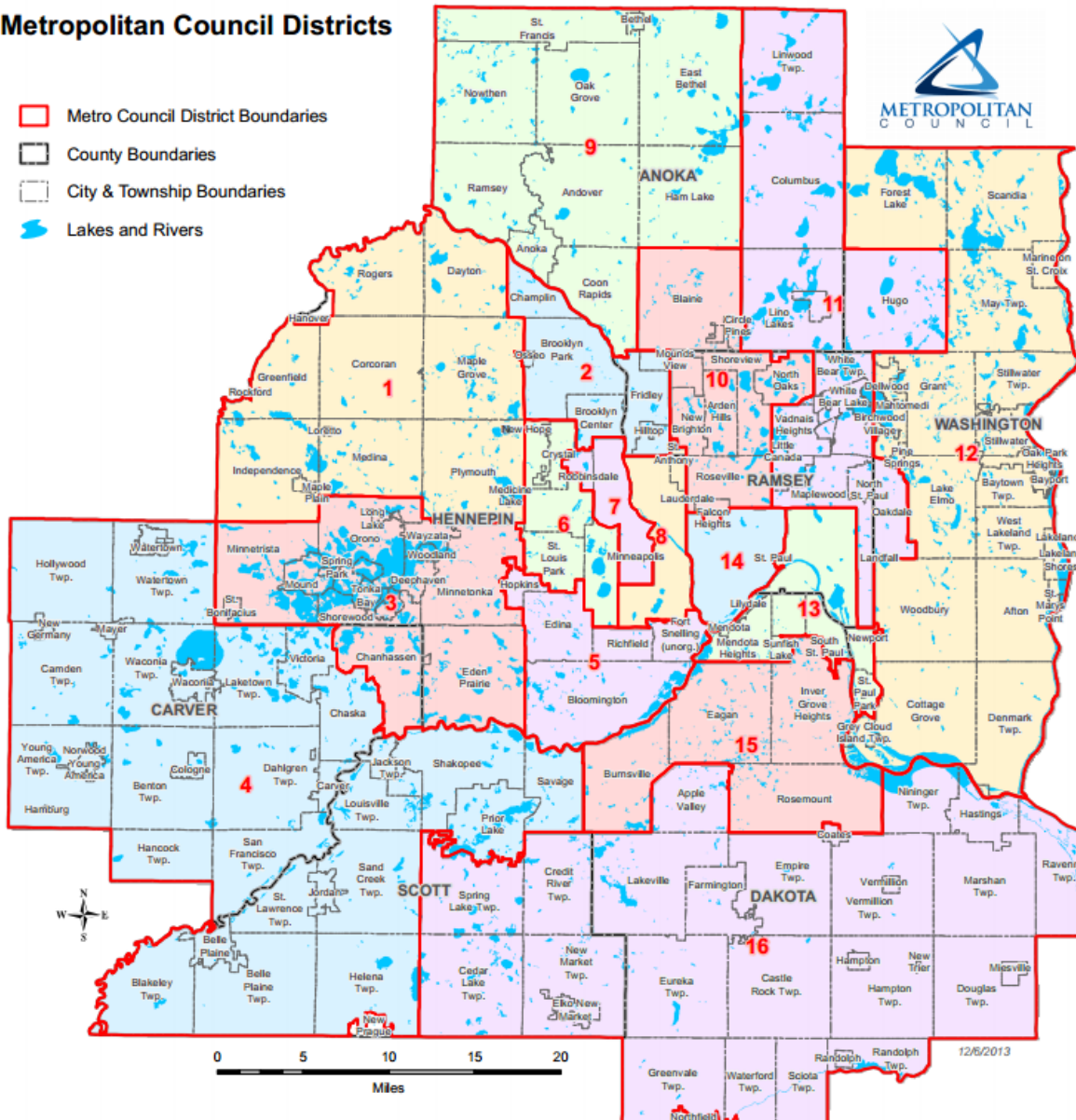


Who we are

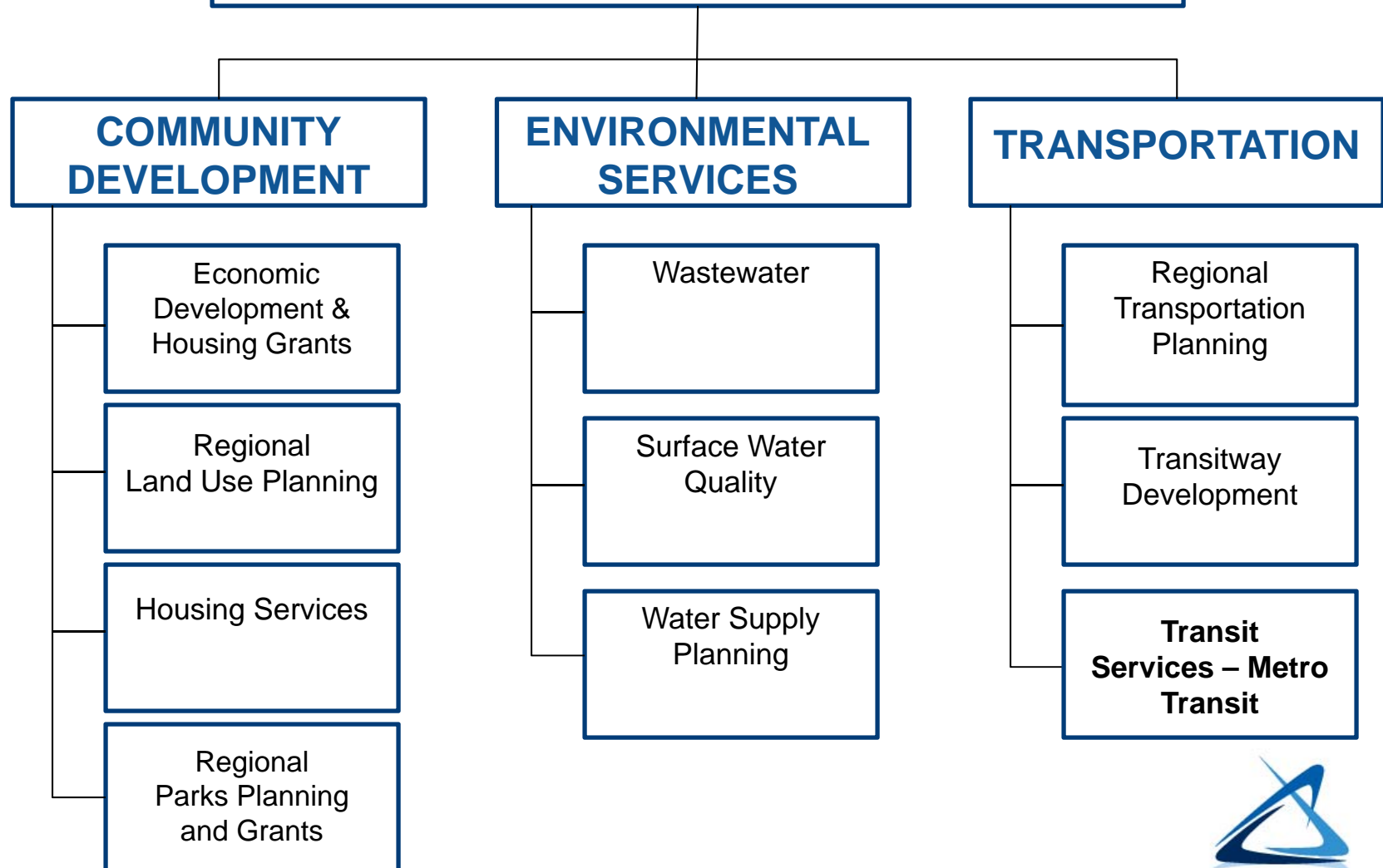
- Created in 1967 to plan for the orderly growth of the seven-county metro area
- 17 members appointed by and serve at the pleasure of the Governor
- 16 members represent geographic districts across the region
- Chair serves at large

Metropolitan Council Districts and Members

Metropolitan Council Districts



METROPOLITAN COUNCIL



Metro is growing and changing

- Population is growing—nearly 800,000 more people between 2010 and 2040
- Population is becoming older and more diverse
- More people are choosing transit



Metropolitan Council's Role in Transportation

Transit Operations

- Provide, contract for, and coordinate metropolitan transit operations (bus and rail)
- Provide financial assistance to local transit providers

Planning

- Designated as the region's Metropolitan Planning Organization or "MPO"
- Long-range transportation planning and shorter term federal funds programming

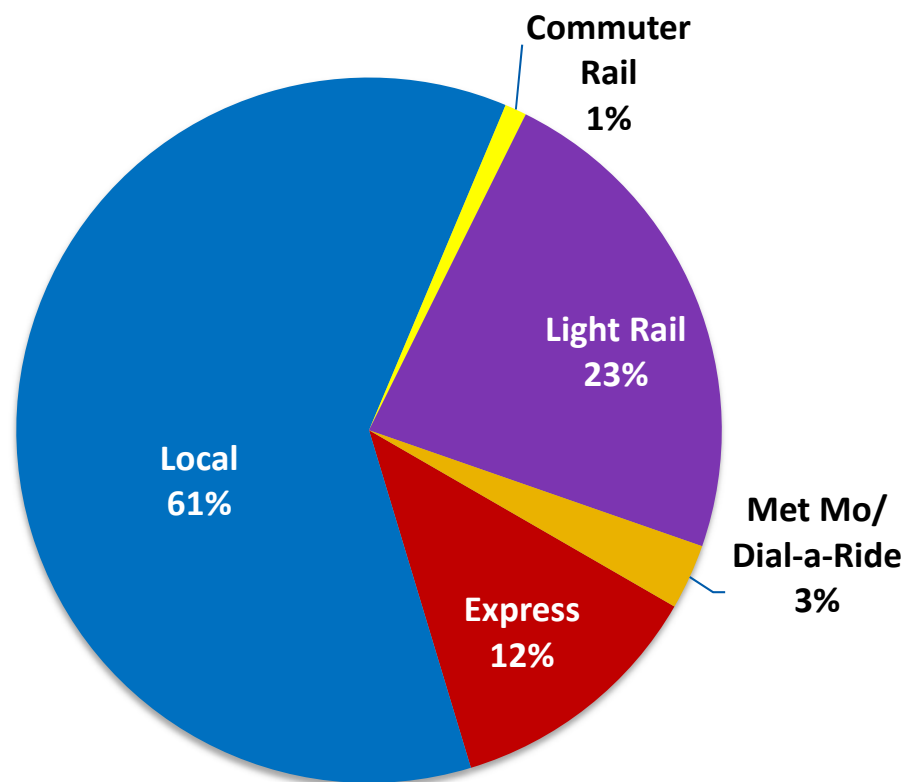
Transit Operations

**Brian Lamb, General Manager
Metro Transit**

Regional Transit Services

Metropolitan Council Delivered Services	Contracted Services	Suburban Transit Provider Services
Bus regular route	Metro Mobility	Bus regular route
METRO Blue Line and Green Line light rail	Contracted bus regular route	Dial-a-ride
METRO Red Line bus rapid transit	Transit Link dial-a-ride	
A Line arterial bus rapid transit	Metro Vanpool	
Northstar commuter rail		
Regional support and rideshare services		

2015 Regional Transit Ridership



**324,000
rides per
day**

98.8 million rides per year

Bus system accounts for **76%**
of regional ridership

Metro Transit

- APTA 2016 Transit System of the Year
- 2016 rides = 82.6 million
- About 86% of region's regular route transit ridership
- 3,320 employees
- 16th largest system in the U.S. based on ridership



Metro Transit Service

907 square miles

- 90 cities, 7+ counties

129 bus routes

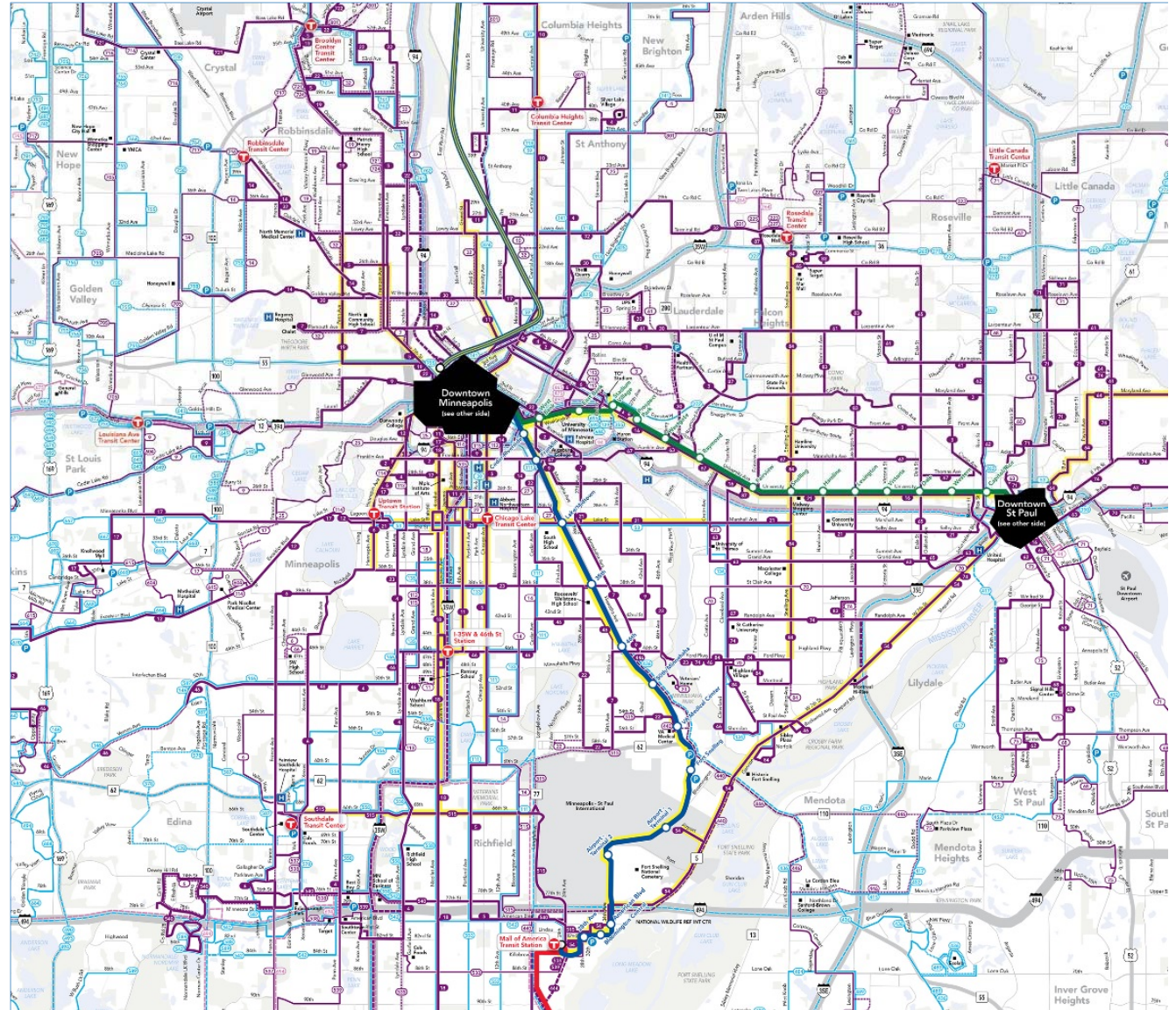
- 58 local, 64 express

65+ Park & Rides

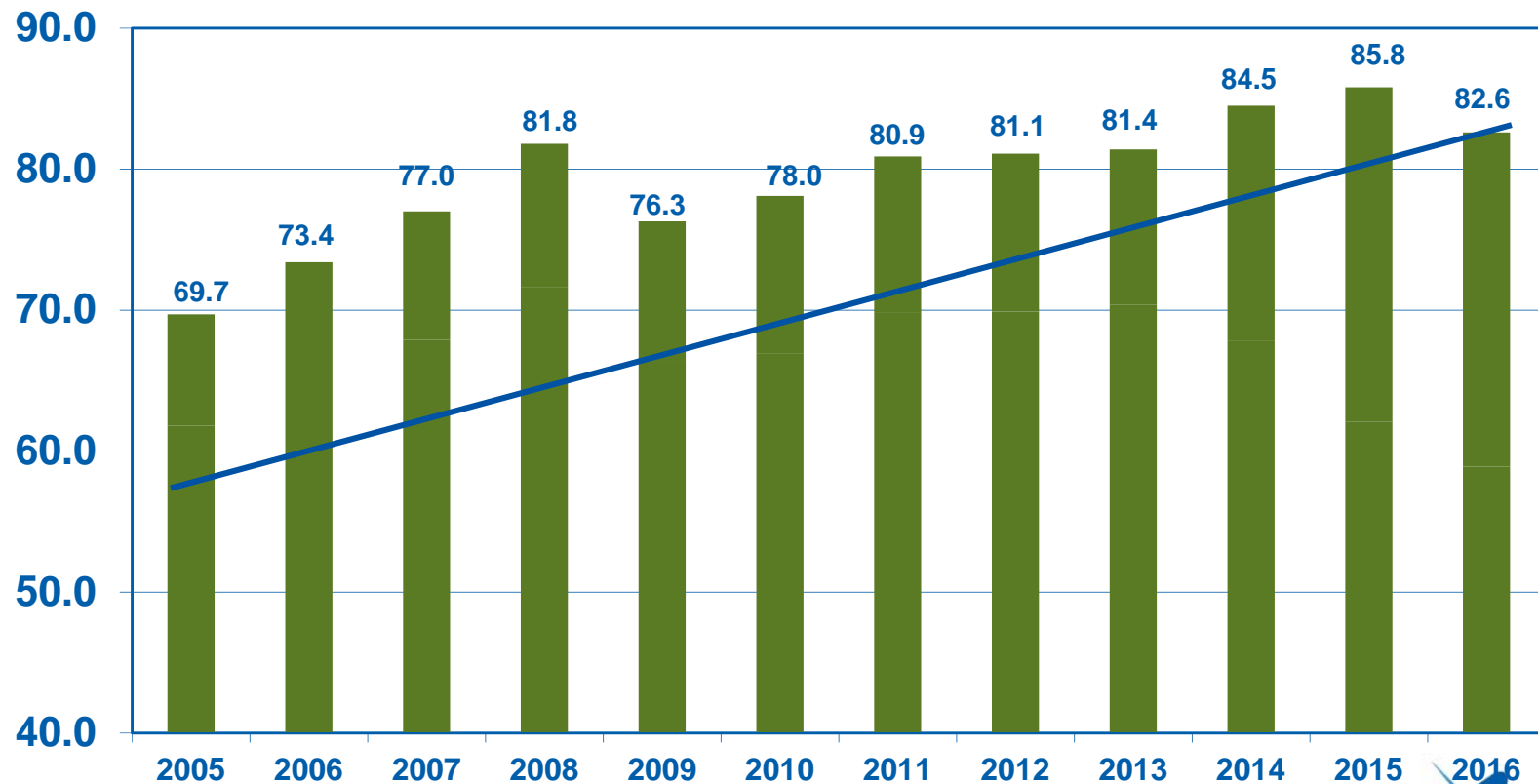
- 15,500 spaces

12,500 bus stops

- 900 shelters



Metro Transit Historical Ridership



18.5% growth in ridership since 2005

Metro Transit Customers

- **73%** of trips for work and school
- **40%** of downtown core Minneapolis workers use transit
- **69%** of customers have access to cars but choose transit
- **44%** of LRT riders, **27%** of bus riders have household incomes above \$50,000
- **89%** of customers are satisfied with their transit experience
- **24%** of METRO Green Line customers are new to Transit
- **30%** of customers say they don't have enough service to meet their needs



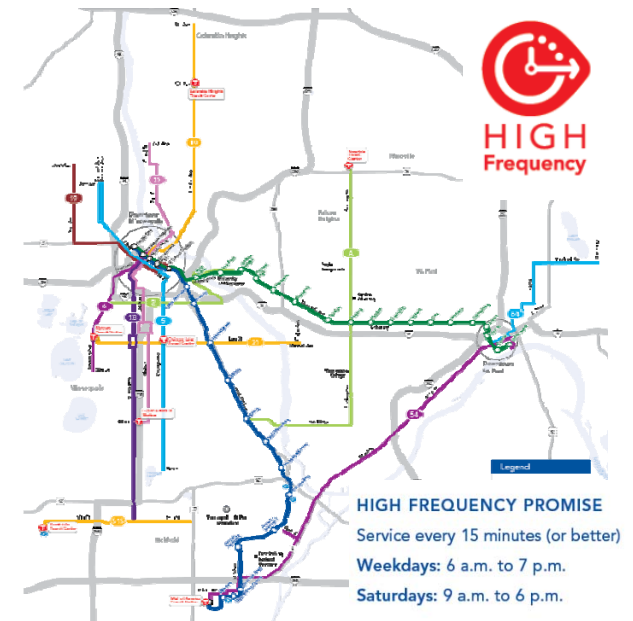
Metro Transit Partnerships

- 36,149 Metropass holders, 333 employers, 12.3M rides
- School Pass Programs
 - U of M (U-Pass), 4.1M rides
 - College Pass, 37 colleges, 2.0M rides
 - Student Pass, 50 high schools, 4.2M rides
- State Fair - 632,000 rides
- Special Events



2016 Service Improvements

- A Line Implemented: 33.5% higher ridership
- Core local route frequency and span with federal grant or reinvestment
- 43 new or improved customer shelters (heat, light)
- 4,500 new bus stop signs



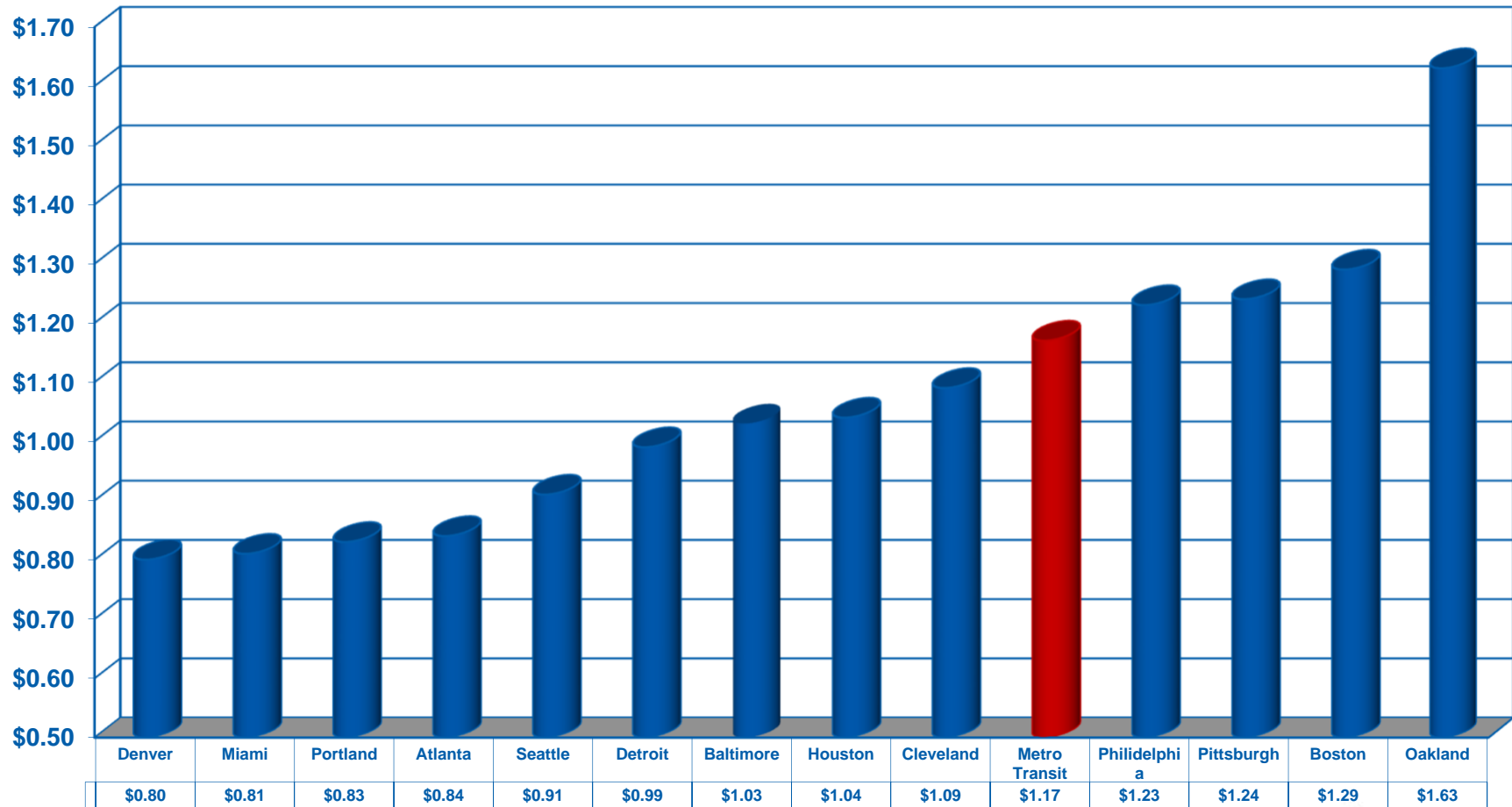
Metro Transit Bus Operations

Regular Route Bus—base bus system.

Express Bus—bus service with limited stops. Routes are longer, typically designed for commuters.

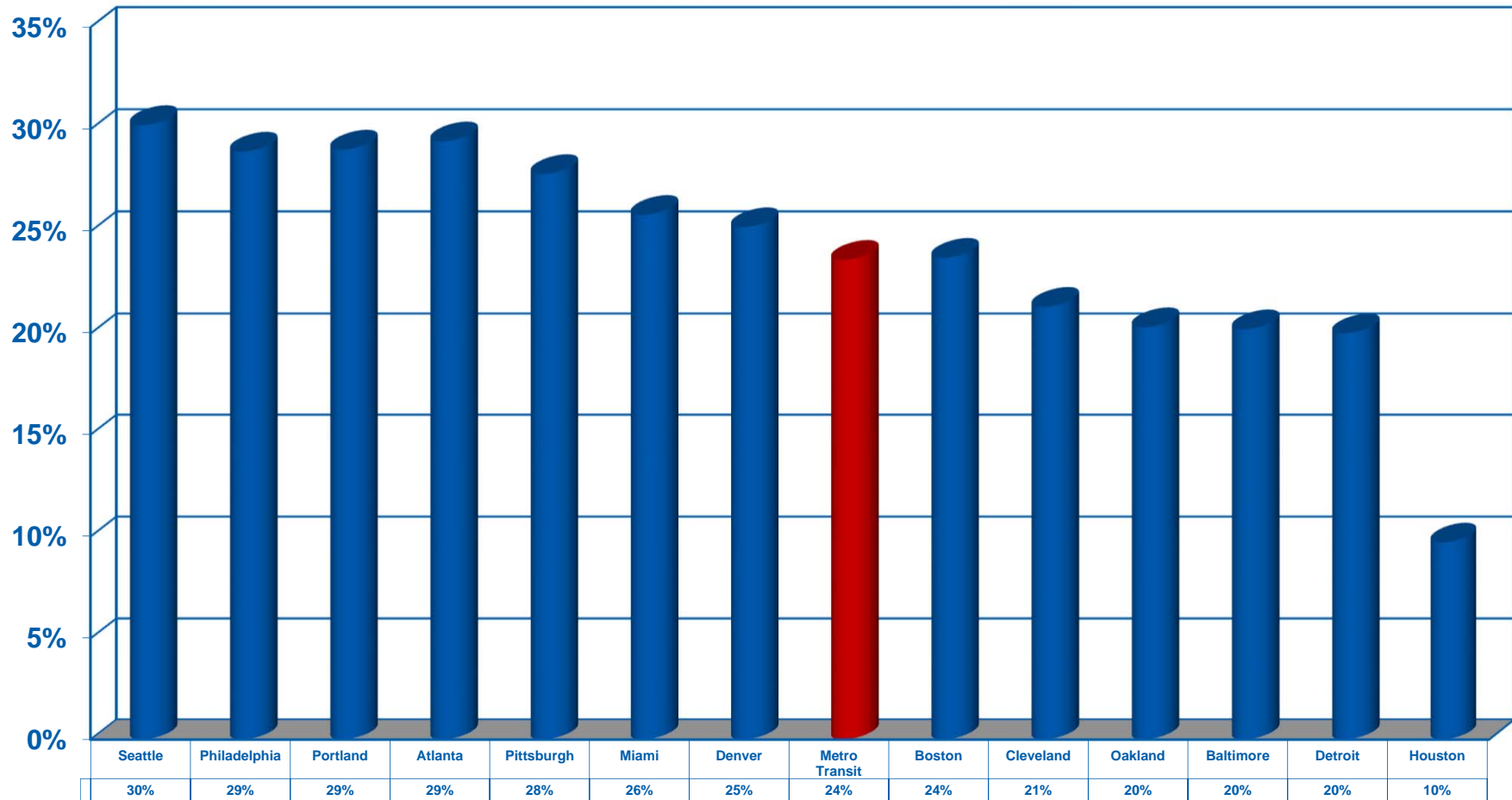
Bus Rapid Transit—bus service similar to light rail on major road ways.

Bus Operating Expense Per Passenger Mile



Source: 2015 National Transit Database

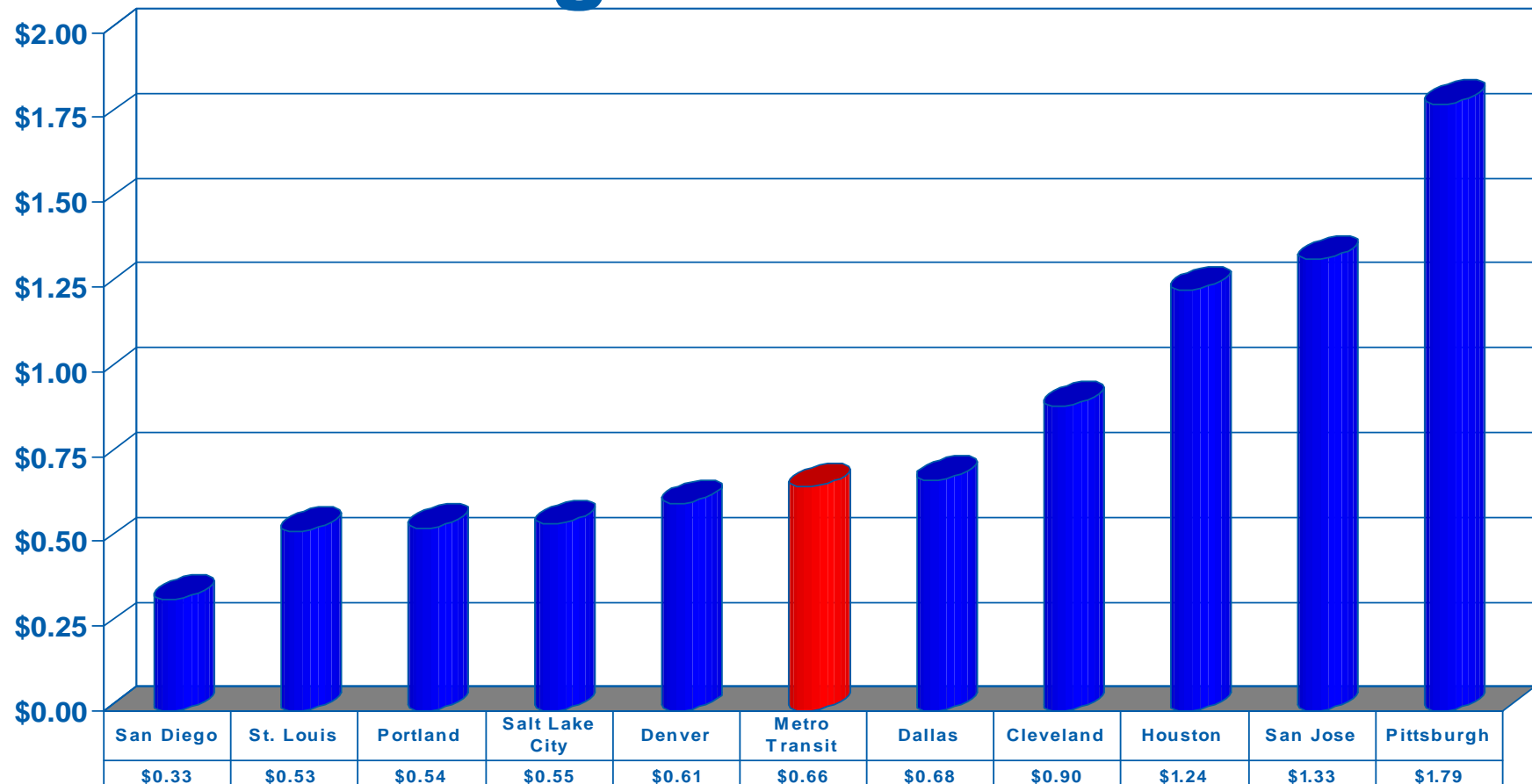
Bus Farebox Recovery Ratio



Percentage of operating expenses covered by fares

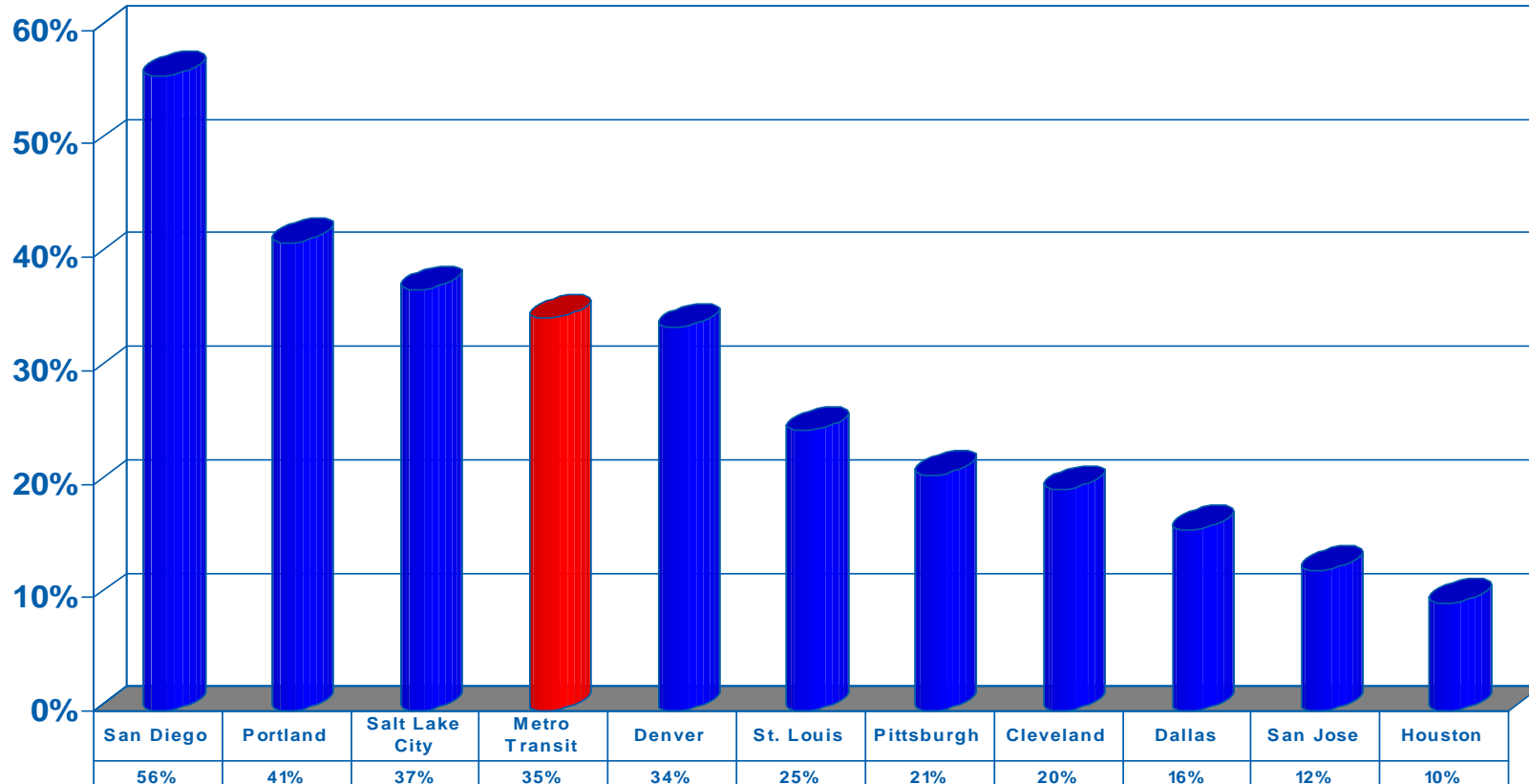
Source: National Transit Database 2015 Data - Motorbus

Light Rail Operating Expense Per Passenger Mile



Source: National Transit Database 2015 Data - Light Rail

Light Rail Farebox Recovery Ratio



Percentage of operating expenses covered by fares

Source: National Transit Database 2015 Data - Light Rail

METRO Blue Line

- **Over 120.8 million rides** since opening in 2004; 10.2M rides in 2016
- **Total construction cost:** \$715.3M
- **2015 Annual operating cost:** \$30.6M
- **2015 Farebox Recovery:** 32.7%
- **2015 Subsidy per passenger:** \$1.87

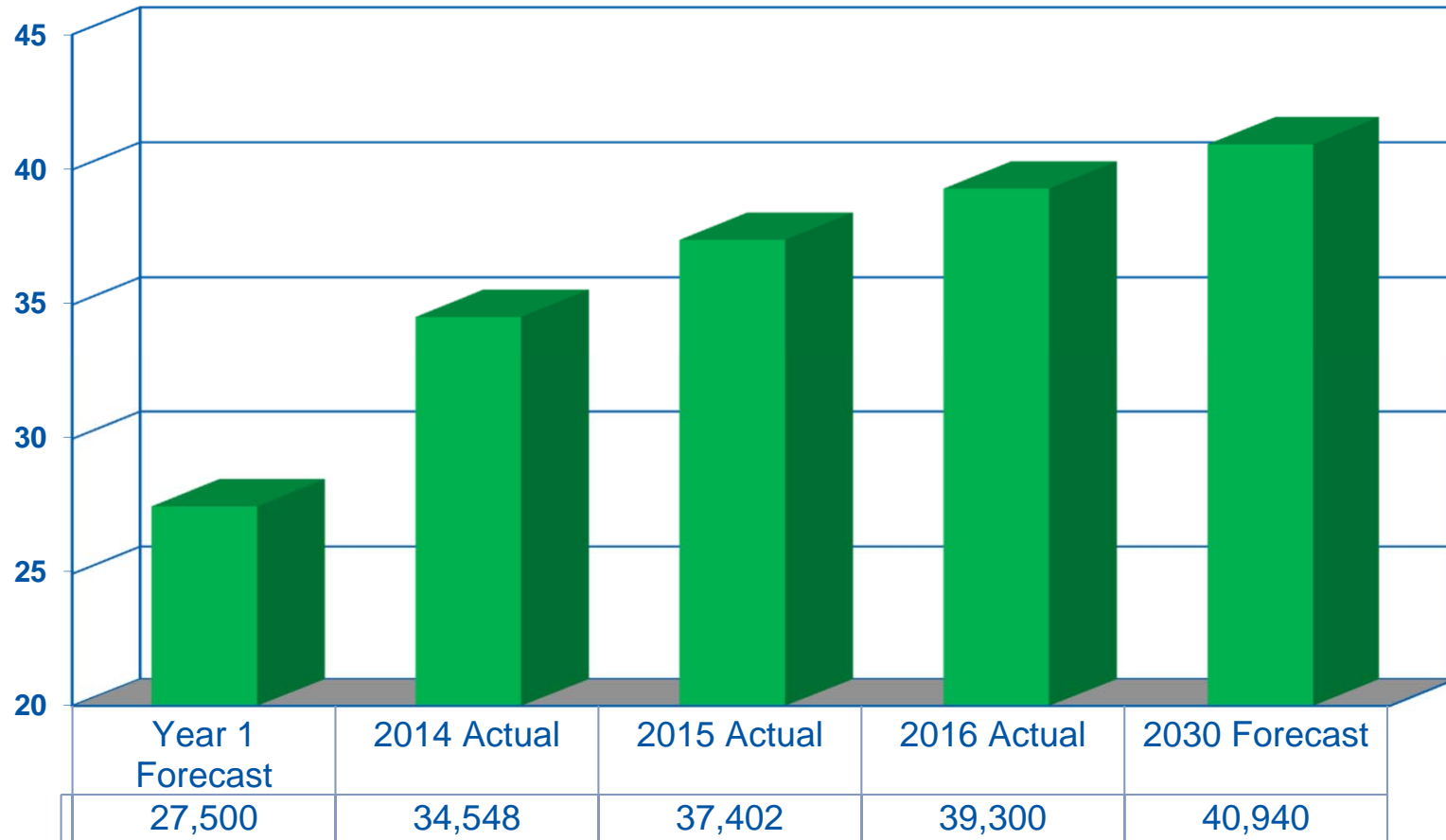


METRO Green Line

- **Over 31.5 million rides** since opening in June 2014, 12.6M rides in 2016
- **Total construction cost:** \$957 million
- **Jobs Created:** 5,500 construction workers
- **2015 first full year of revenue operations**
- **2015 Annual operating cost:** \$31.9M
- **2015 Farebox Recovery:** 38.7%
- **2015 Subsidy per Passenger:** \$1.49



Green Line Average Weekday Ridership



In 2016, 97 days exceeded the 2030 forecasted ridership of 40,940

Northstar Commuter Rail



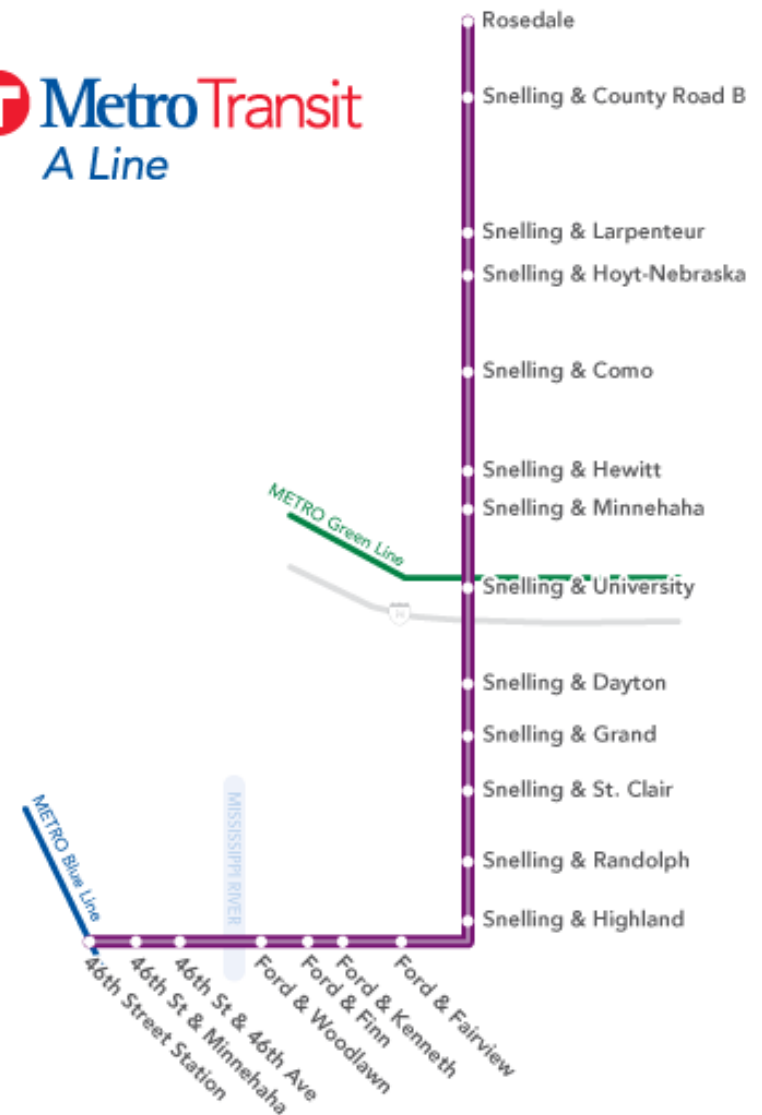
- 2016 Ridership: 711,000 rides
- Total Cost with Ramsey and Fridley Stations: \$347.6M
- 2015 Annual operating cost: \$14.5M
- 2015 Farebox recovery: 17.1%
- 2015 Subsidy per passenger: \$16.49



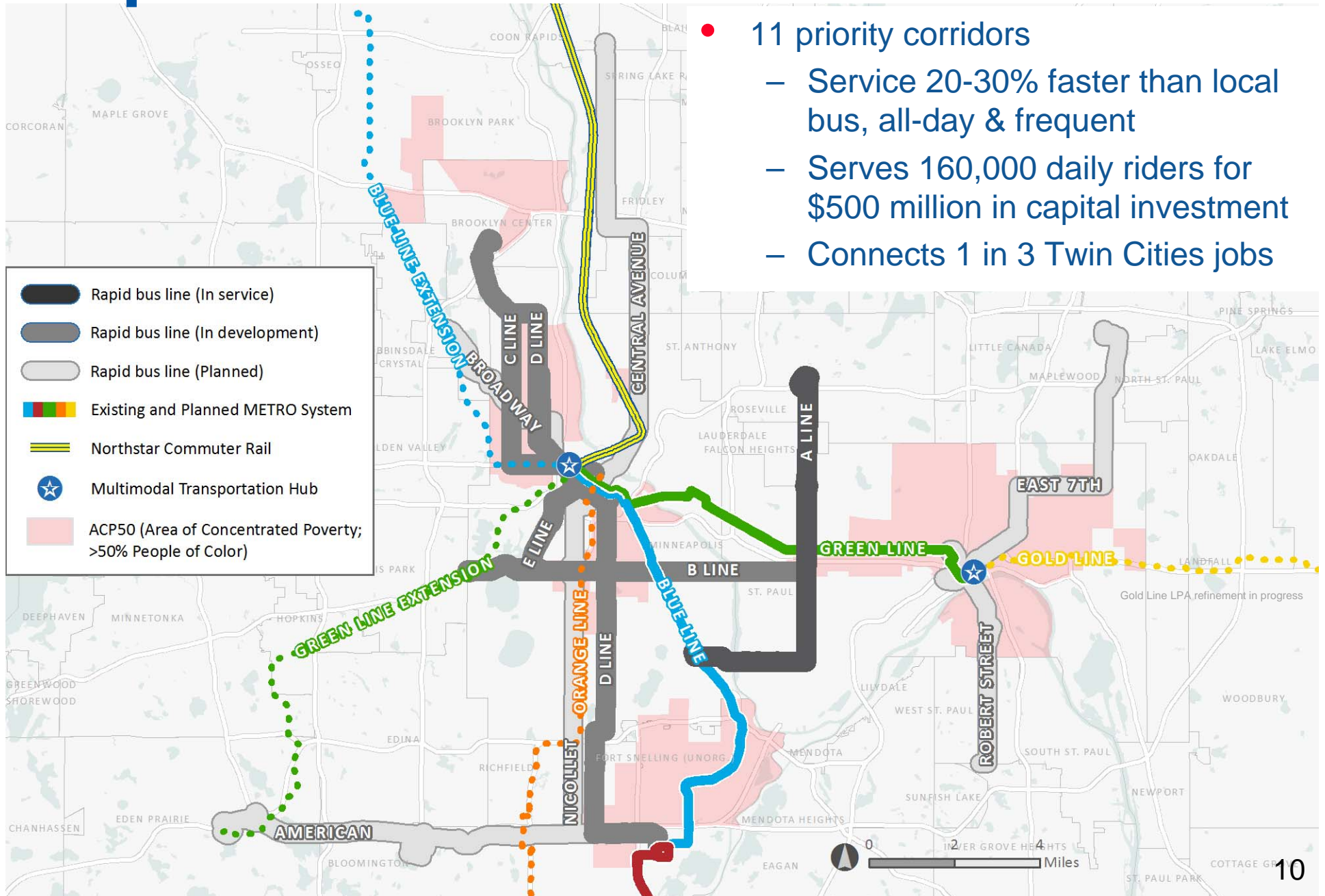
A Line



- Opened June 11, 2016
- 10-mile line with
- 20 enhanced stations
- Specialized vehicles
- Pre-boarding fare payment
- Transit signal priority
- Faster trip
- Over 748K rides in 2016, 33.5% increase over 2015 Route 84



Rapid Bus Network



- 11 priority corridors
 - Service 20-30% faster than local bus, all-day & frequent
 - Serves 160,000 daily riders for \$500 million in capital investment
 - Connects 1 in 3 Twin Cities jobs



Contracted Services and Planning

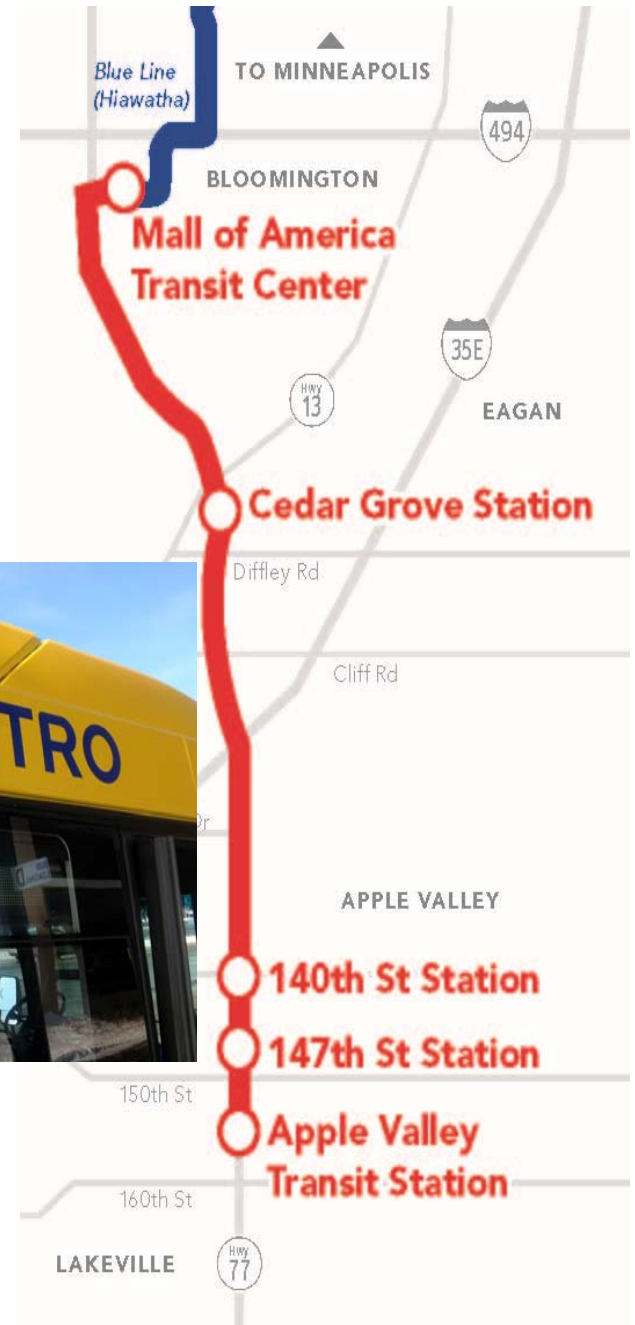
**Nick Thompson, Director
Metropolitan Transportation Services**

Metropolitan Transportation Services

- MTS has both Transportation Planning and Transit Operations functions
- Transit Operations includes contracted:
 - Regular Route
 - Metro Mobility
 - Transit Link Dial-a-Ride
 - Metro Vanpool
- MTS provides pass-through funding to Suburban Transit Providers (STPs)

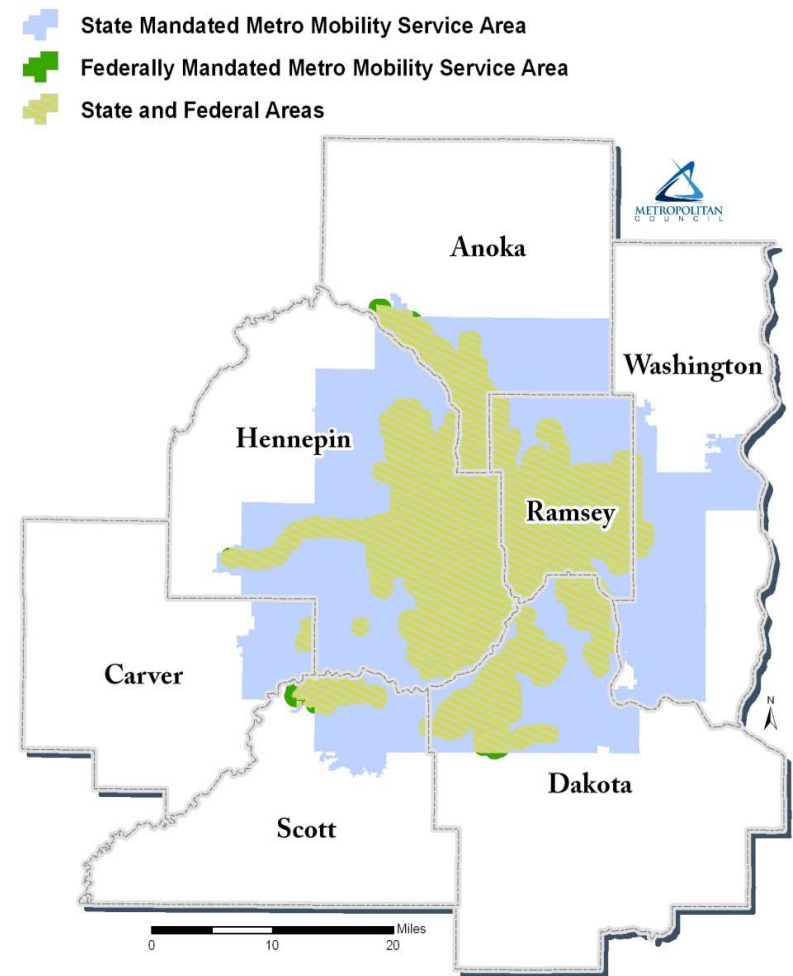
METRO Red Line Bus Rapid Transit

- Service began in June 2013
- 2015 Ridership: 265,410
- Total construction cost: \$112M (\$57M roadway)
- Annual operating cost: \$3.5M (2015 budget)
- Council contracts operations to MVTA



Metro Mobility

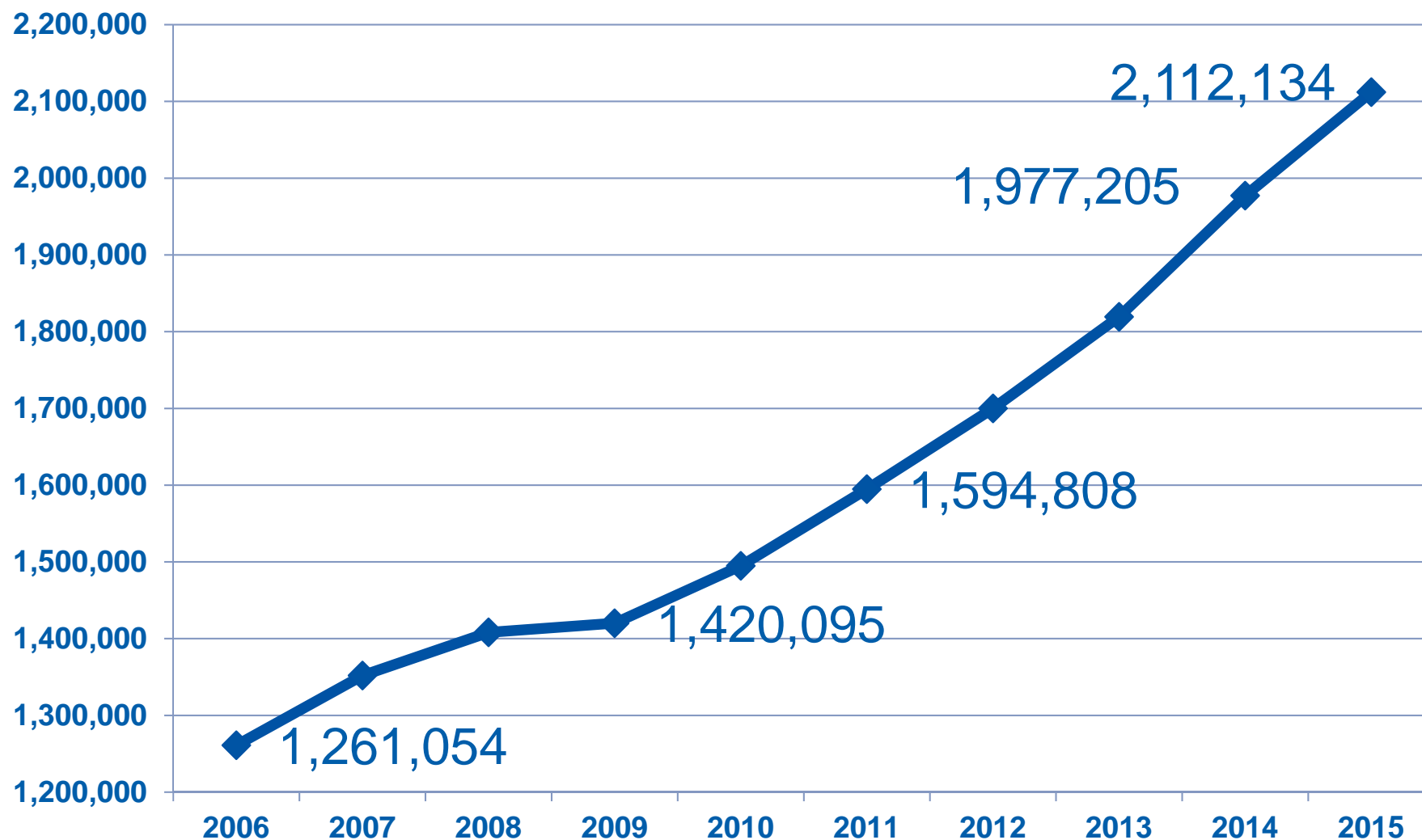
- Meets Americans with Disabilities Act (ADA) requirement
- Meets MN Statute 473.386, subd.2a.(i) requirement
- Door through door dial-a-ride service
- 2015 Subsidy per passenger: \$23.86
- 2015 Farebox Recovery: 13.3%



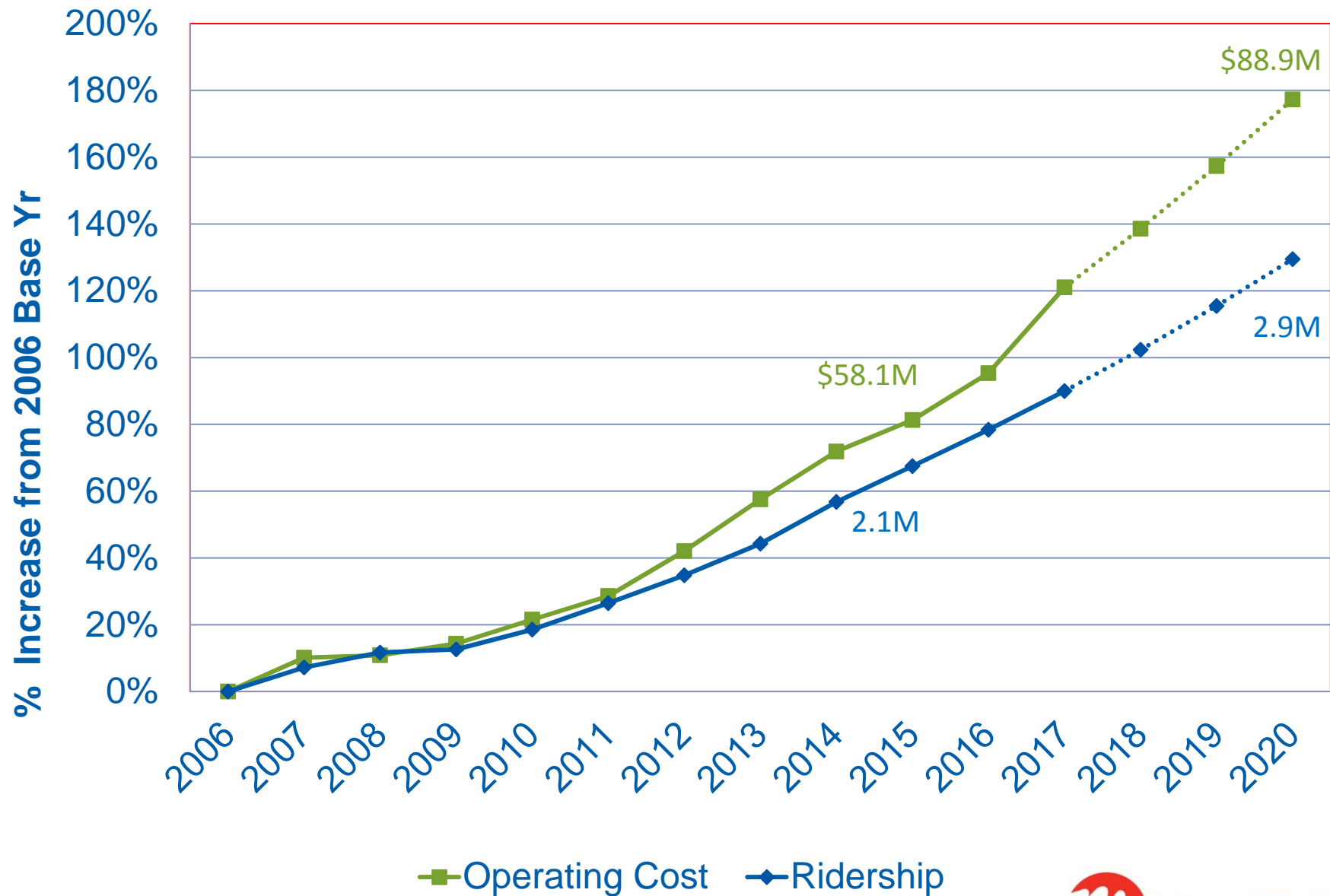
Metro Mobility Cost Pressures

- Aging population
- Growing population
- Driver shortage
- Enhanced federal performance requirements
- Increased average trip length

Metro Mobility Ridership 2006-2015

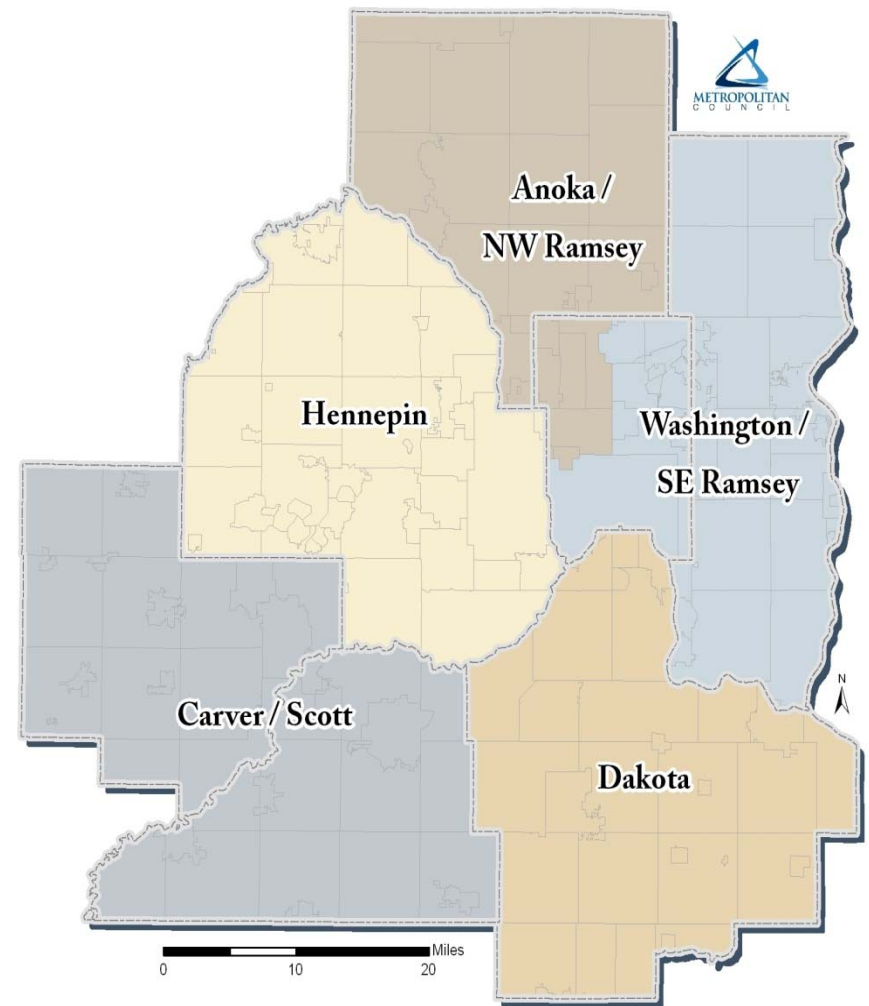


Metro Mobility Ridership, Operating Costs



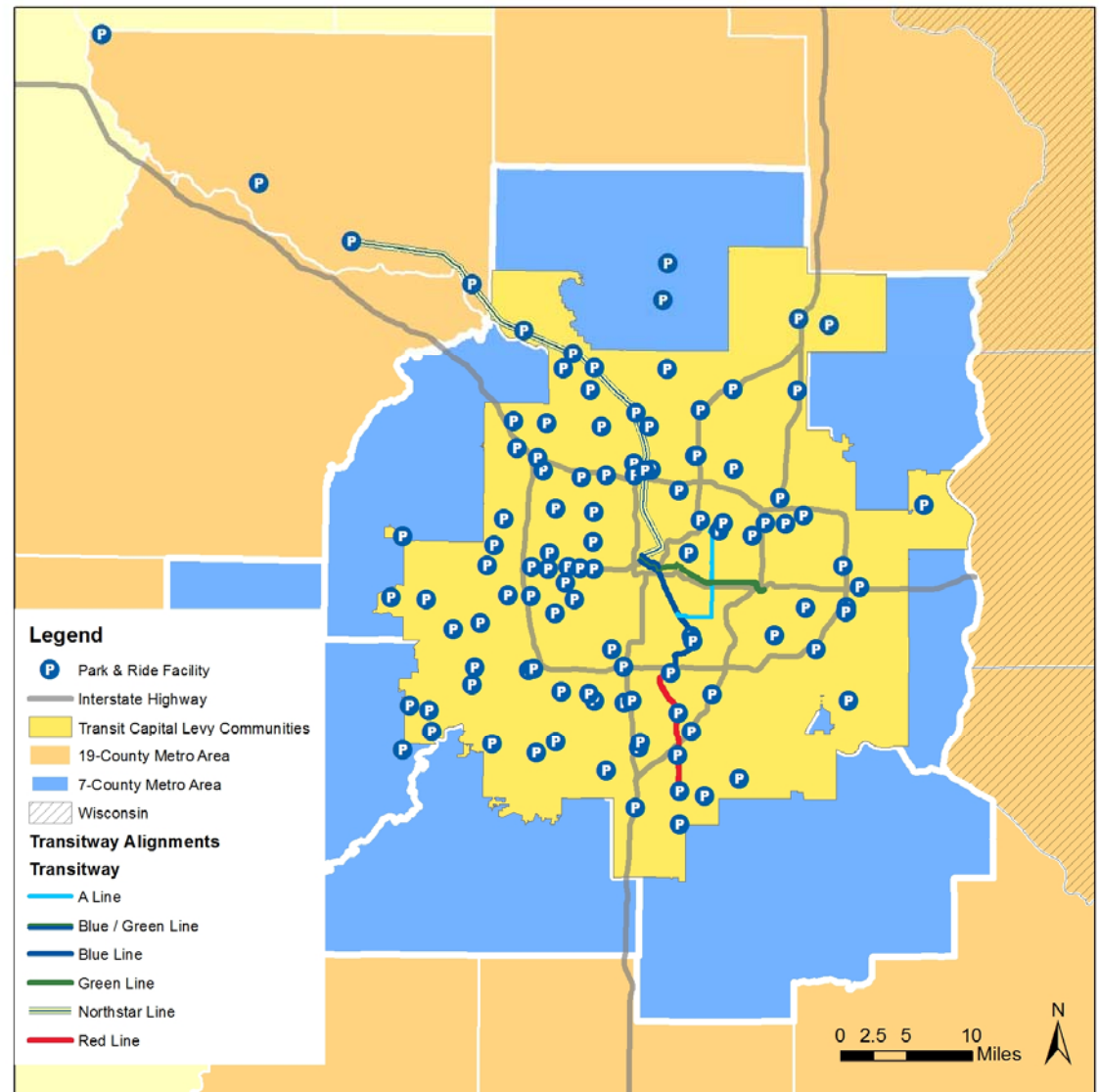
Transit Link Dial-a-Ride

- General public dial-a-ride offering a transit solution where regular route is not available
- Five service area contractors coordinate with regular route and Metro Mobility
- 2015 ridership: 338,250
- 2015 Subsidy per passenger: \$18.78
- 2015 Farebox Recovery: 12.7%



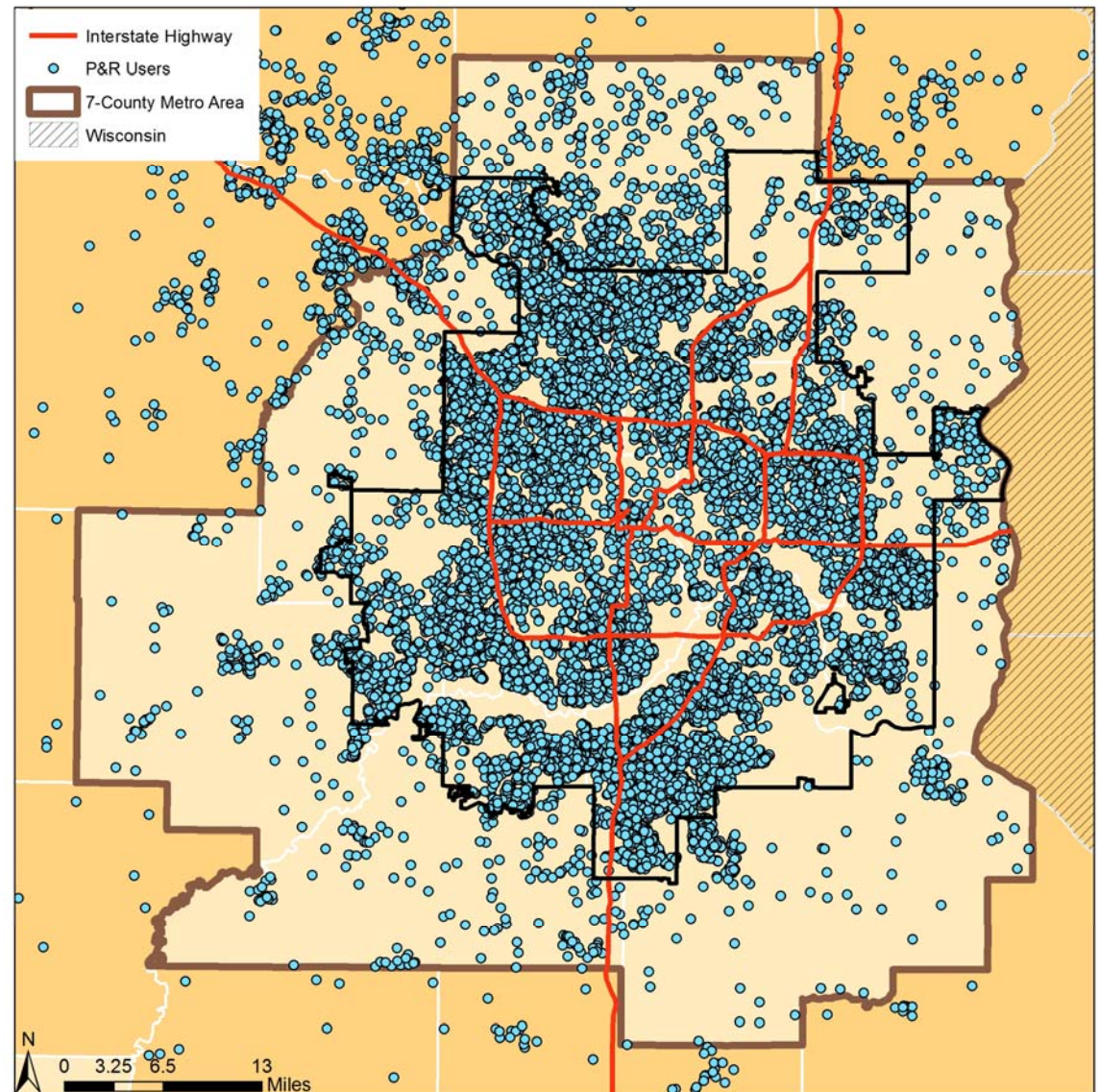
Regional Park-and-Ride System

- 34,000 total spaces
- 109 total facilities
- Many large park and rides full



Park & Ride Usage

10% of park-and-ride users live outside of the 7-county metro



Transportation Planning Activities

- Highway Planning
- Transit Planning
- Airport Planning
- Freight Planning
- Travel Forecasting
- Corridor Studies



MPO Functions

- **Perform federal and state mandated planning**
 - Long-range: Transportation Policy Plan (TPP)
 - Short-range: Transportation Improvement Program (TIP)
 - Unified Planning Work Program (UPWP)
 - Major transportation studies
- **Allocate federal funds** through competitive solicitation overseen by Transportation Advisory Board (TAB)
- **Coordinate planning activities** with MnDOT, transit operators, MAC, and local governments
- **Ensure public input** in planning and federal funds programming

Transportation Advisory Board

- Comprised of 34 members (M.S. 473.196):
 - Elected officials from cities and counties
 - Staff from state agencies
 - Citizens
- Fulfills requirements that local elected officials participate in selecting federally-funded projects
- TAB recommends projects, Council concurs/denies

2040 Transportation Policy Plan

- Council updates the Transportation Policy Plan (TPP) every 4 years
- 2040 TPP adopted by the Metropolitan Council in January 2015 and is being update beginning in 2017
- TPP addresses a variety of modes
 - Highways
 - Transit
 - Non-motorized (Bicycling / Pedestrian)
 - Freight
 - Aviation

Transit Funding

Transit Operating Funding Sources

- **Motor Vehicle Sales Tax (MVST)**
Metropolitan area transit receives 36% of statewide MVST
- **State General Fund**
Legislatively appropriated for bus and rail operations
- **Federal Funds**
Formula capital funds used for preventive maintenance in operating budget
- **Fares**
Passenger fares from all services
- **Local and Other**
CTIB transitway operating funds
Advertising and other revenue

Transit Capital Funding Sources

- State bonds
- Regional Transit Capital
- Federal Funds
- CTIB Sales Tax
- Regional Rail Authorities/Other Local



METROPOLITAN
C O U N C I L