

ROCORI TRAIL PHASE 3 – RICHMOND/COLD SPRING/ROCKVILLE, MN PROJECT SUMMARY – MARCH 2019

PROJECT DESCRIPTION:

We are requesting \$1.13M for engineering and construction of a pedestrian/bicycle/snowmobile trail that will follow the former BNSF railroad corridor along Trunk Highway 23. The total estimated project cost is \$2.437M. We have secured \$812,270 in Federal Transportation Alternatives Program funding. ROCORI Trail Phase 3 completes the connection of the cities of Richmond, Cold Spring, and Rockville.

ACTIVITIES COMPLETED TO DATE:

The ROCORI Trail Construction Board has been working since 2004 to connect the cities of Richmond, Cold Spring, and Rockville. To date, we have:

- Built Phase 1 – 178th Ave, Richmond to 2nd Avenue NE, Cold Spring.
- Acquired all of the necessary ROW from BNSF to construct Phases 2 and 3.
- Built Phase 2 - Mill Street in Rockville west towards Cold Spring, ending at the 235th Street cul-de-sac.
- Secured \$812,270 in Federal Transportation Alternatives Program funding for FY 2021.

PART OF A LARGER PLAN:

- The ROCORI Trail is connected to the Glacial Lakes State Trail, which is a trail of statewide significance that runs from Willmar to Richmond. This Phase 3 will bring that connection from Willmar to Rockville, approximately 50 miles of trail.
- Stearns County has future plans to connect to the ROCORI Trail at Rockville and travel east into the St. Cloud area.
- Connections could then easily be made to both the Lake Wobegon and Beaver Island Trails.
- Furthermore, Stearns County has talked about connecting the Beaver Island Trail to Warner Lake Park. The City of Clearwater in Wright County has plans to connect its trail to Warner Lake Park. This would bring more than 100 miles of trail connectivity to the region.

PROMOTION OF ALTERNATIVE TRANSPORTATION:

- Connects three cities and two townships (11,407 people) and all of the cross town travel, including the school district (2,000+ students).
- Cold Spring Granite, a large Cold Spring business, utilizes the trail for their employee wellness program. GNP is another large employer in the area and they wish they had direct access to the trail, and they would with Phase 3.
- Will draw visitors from outside the region as this trail connects to the Glacial Lakes State Trail.
- Also provides access to great natural resources and recreational opportunities – Eagle Park and Rockville County Park, to name just two great resources.

PROJECT READINESS:

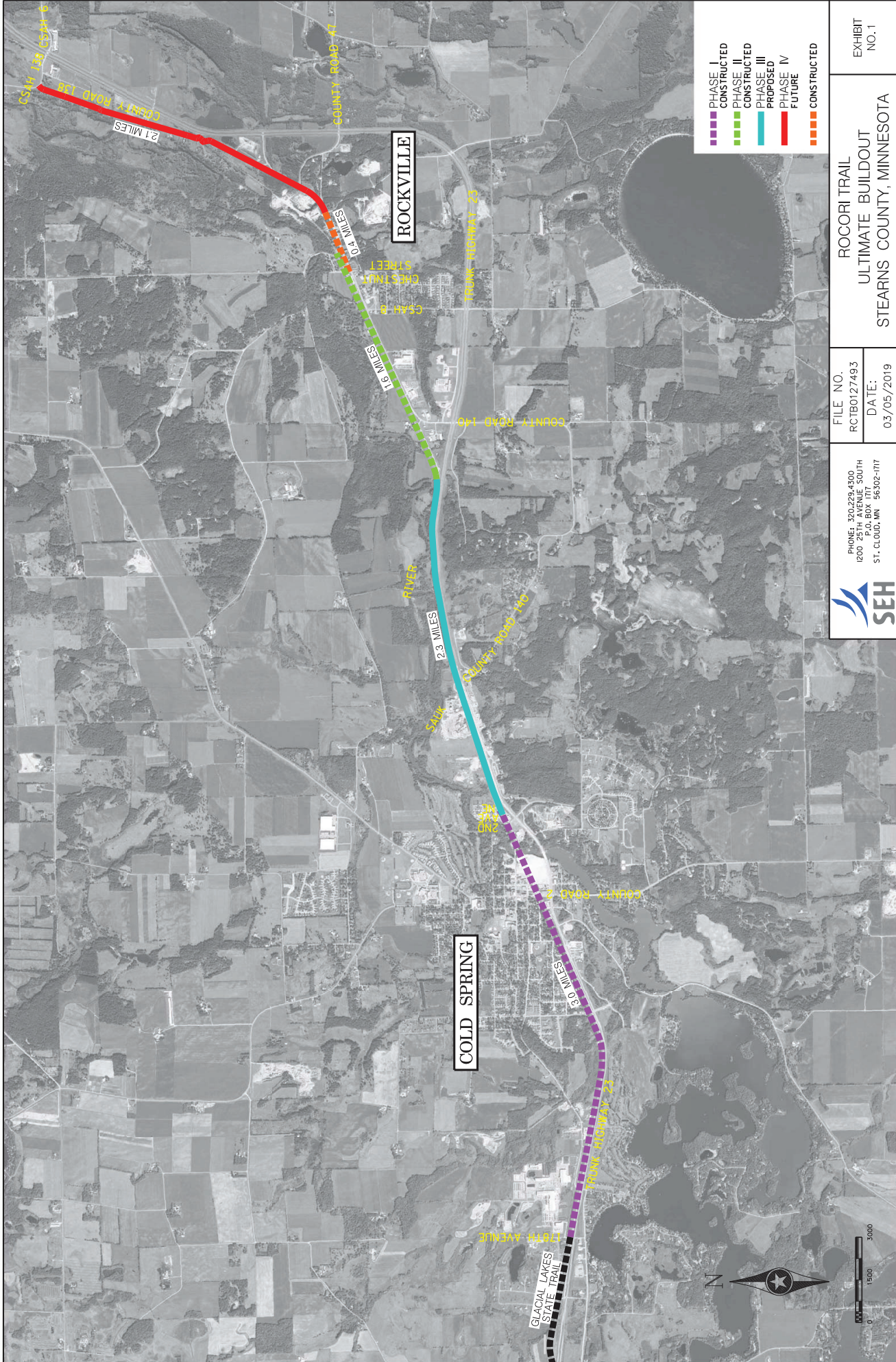
All ROW is secured. Design is complete. Need this funding source to move forward.

For more information on this project please contact:

Pete Weber
ROCORI Trail Construction Board, Chair
320.248.9471
pweber@coldsping.govoffice.com

OR Scott Hedlund, PE, PMP, Sr. Project Manager
SEH
320.229.4355
shedlund@sehinc.com





PHONE: 320.229.4300 1200 25TH AVENUE SOUTH ST. CLOUD, MN 56302-1177	FILE NO. RC1B0127493	ROCORI TRAIL ULTIMATE BUILDOUT STEARNS COUNTY, MINNESOTA	EXHIBIT NO. 1
	DATE: 03/05/2019		



- PHASE I CONSTRUCTED
- PHASE II CONSTRUCTED
- PHASE III CONSTRUCTED
- PHASE IV PROPOSED
- FUTURE
- CONSTRUCTED