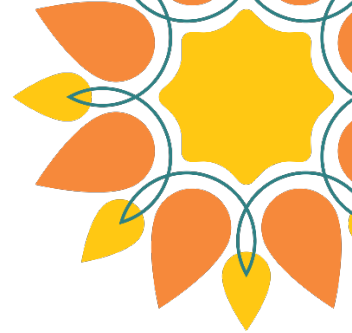
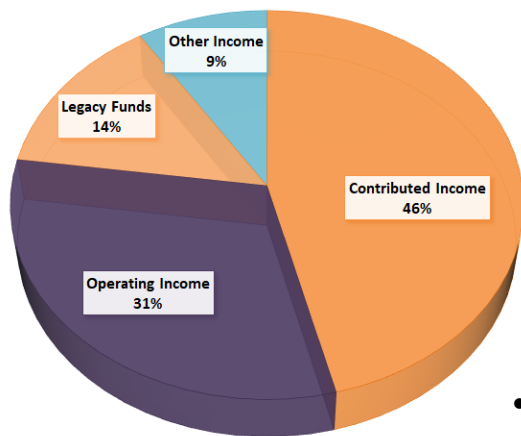


Children's Museum of Southern Minnesota



The Children's Museum of Southern Minnesota is the catalyst for building a stronger, more vibrant community around play so that all children in our region share in a bright future of opportunity and well-being.

CMSM 2018 INCOME

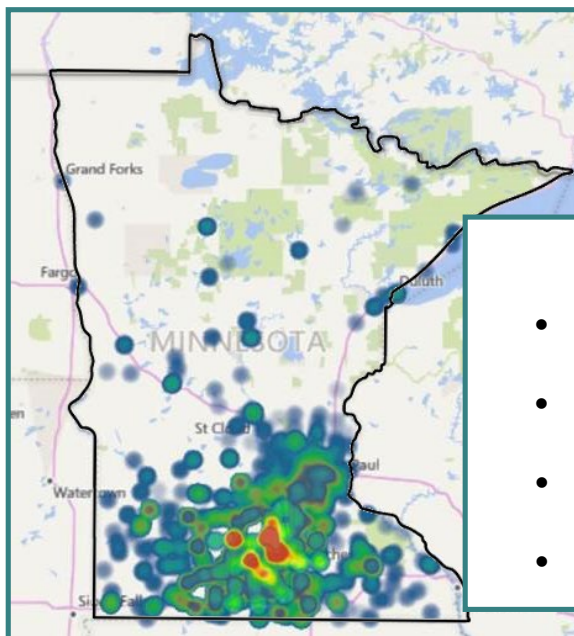


CMSM 2018 Income Budget

Contributed income	\$503,275
Operating income	\$340,500
Legacy funds	\$150,000
Other income	\$98,950
Total	\$1,092,725

Operating income includes membership and general admission sales, and more. Contributed income includes donations and grants from individuals and organizations.

- 6,768.50 volunteer hours contributed = 3 FTEs
- \$504,000 in-kind support leveraged



2018 Impact

- 104,296 total visitors from 70/87 MN counties
- 2292 total memberships
 - 27% access memberships
- 8,680 school group visitors from 22 MN counties
- 3,472 visitors at offsite programs

Thanks to the \$300,000 support from the Legacy Amendment in 2017, we:

- Leveraged regional partnerships to serve 100,000 visitors each year.
- Created new Dakota, Ag, STEAM, and early childhood exhibits in our indoor and outdoor spaces.
- Deepened school group programs focused on STEAM by developing facilitated programming.

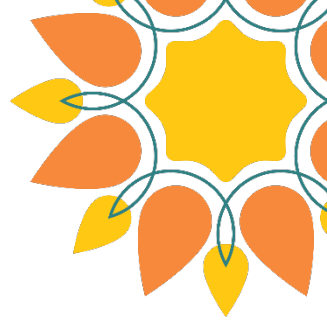


This work is funded in part with money from the Arts and Cultural Heritage Fund that was created with the vote of the people of Minnesota on November 4, 2008.



www.cmsouthernmn.org
224 Lamm Street, Mankato

Children's Museum of Southern Minnesota



Legacy Budget Request

Funding of \$400,000 will create more opportunities for children in our region to experience the Power of Play through dynamic exhibits and engaging programs.



More Opportunities

- Dakota
- Ag education
- Early learning
- STEAM

We are committed to engaging more Minnesotans of all ages, ethnicities, abilities, and incomes to participate in arts, culture, and history of Minnesota.



Because...

The Children's Museum of Southern Minnesota's mission is to ignite the natural curiosity of every child through the power of play in a dynamic, awe-inspiring environment.

