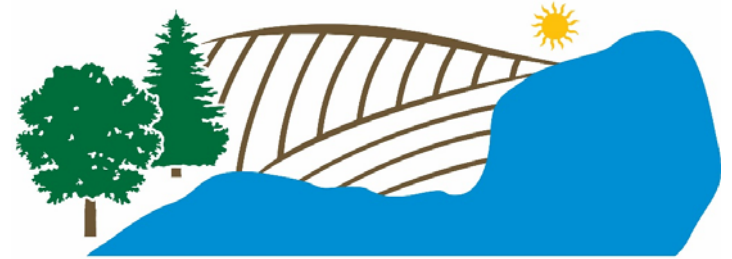


POPE SOIL & WATER

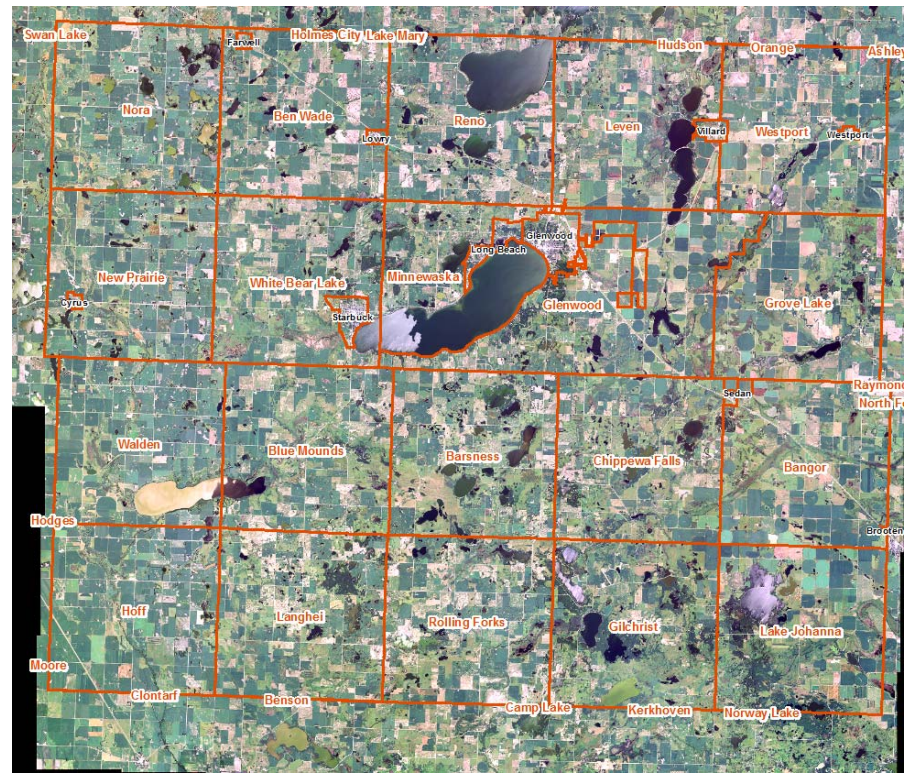


CONSERVATION DISTRICT

House Water Division

SOIL AND WATER CONSERVATION DISTRICTS

Pope County Located in Central Minnesota





Elected Board of Supervisors and Staff

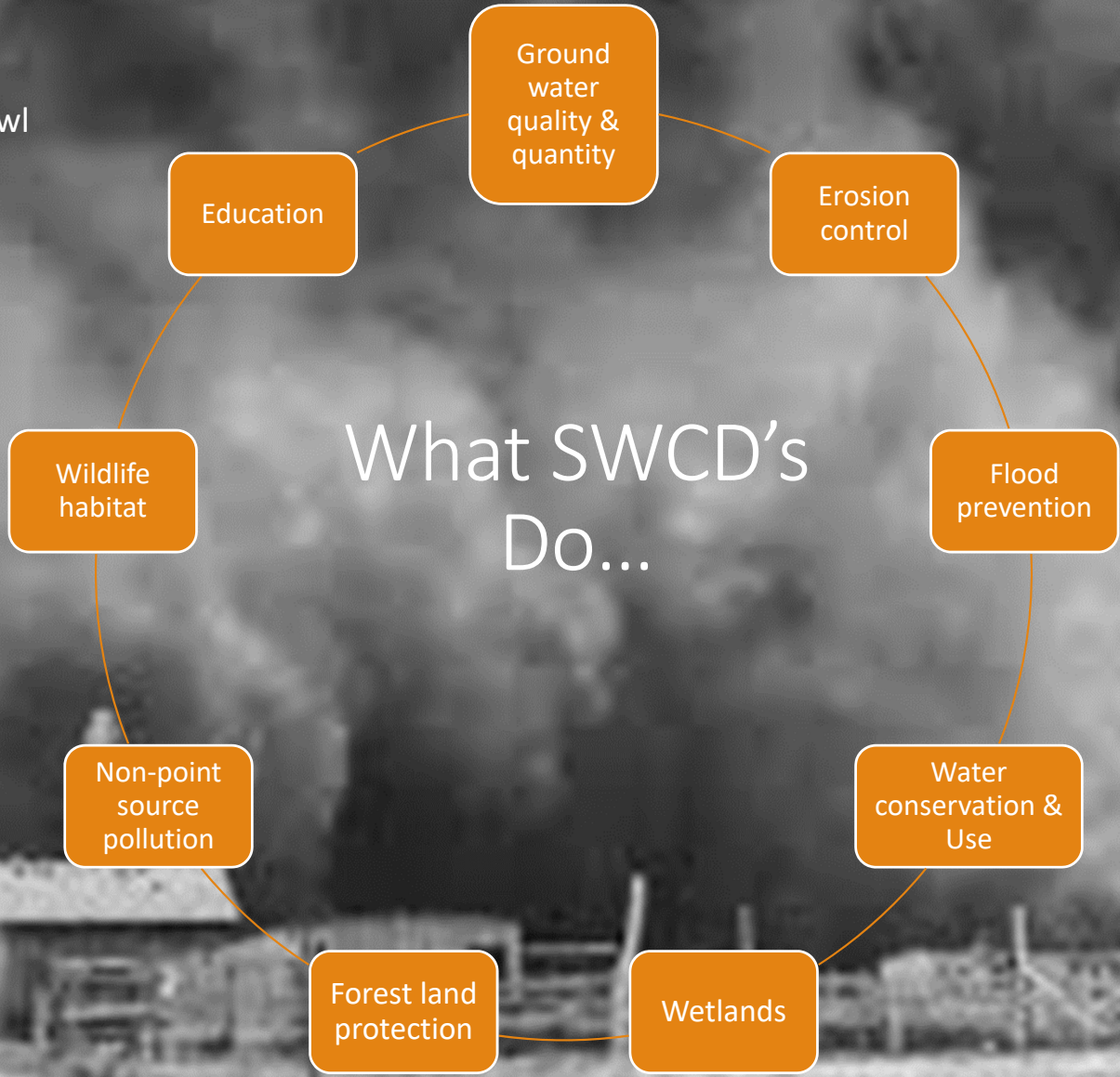
Our Mission:

Conservation, Protection, and Enhancement of Pope County's Natural Resources



Providing Quality Conservation Resources Since 1949

1930's Dust Bowl



What SWCD's Do...

TOURISM



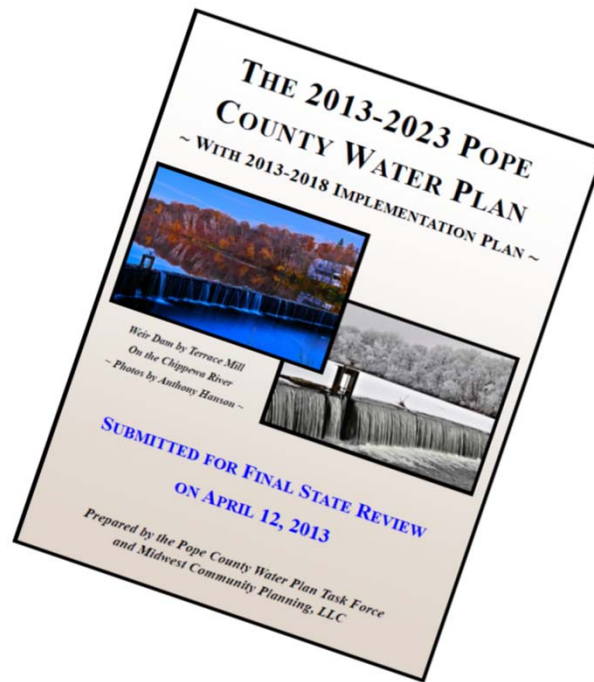
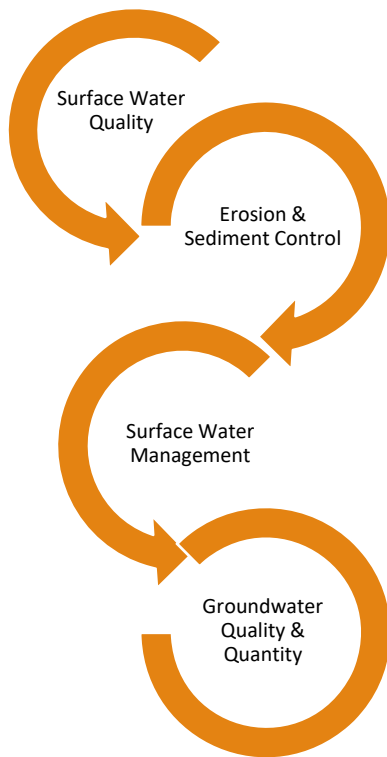
AGRICULTURE



HUNTING

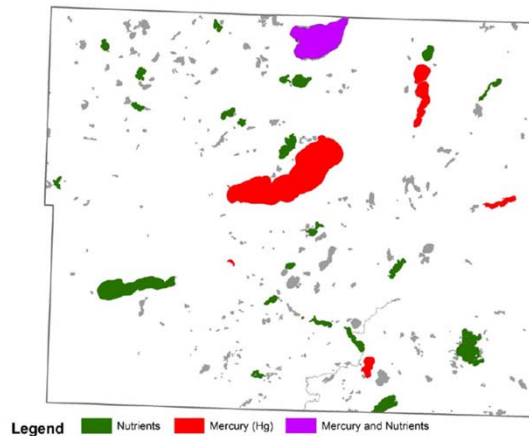


2013-2023 Local Water Plan Priorities



- 8 Lake TMDL
- Lake Reports
- Lakeshed Reports
- Terrain Analysis Reports

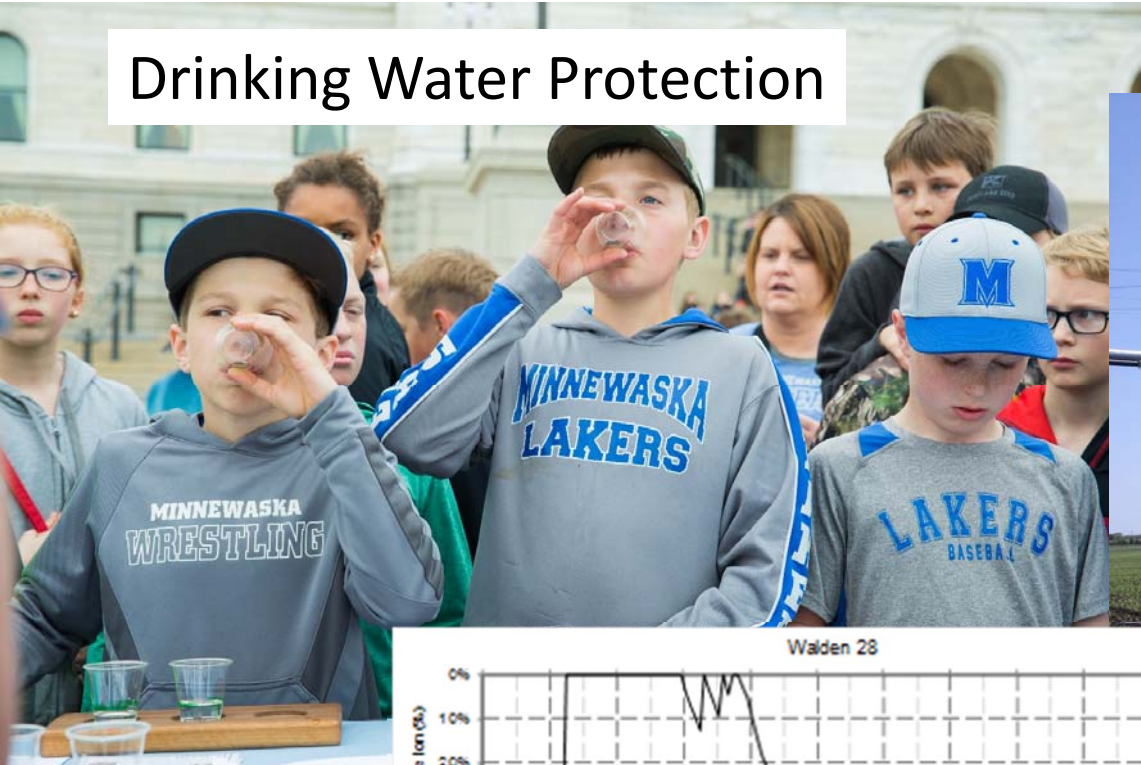
IMPAIRED LAKES



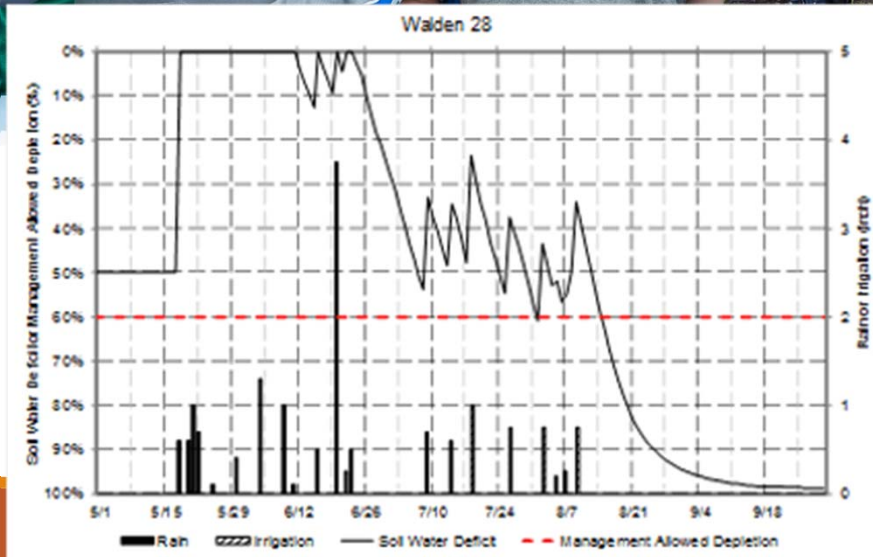
Education Programs



Drinking Water Protection



Irrigation Water Management



Assistance for Establishing Erosion Control Practices

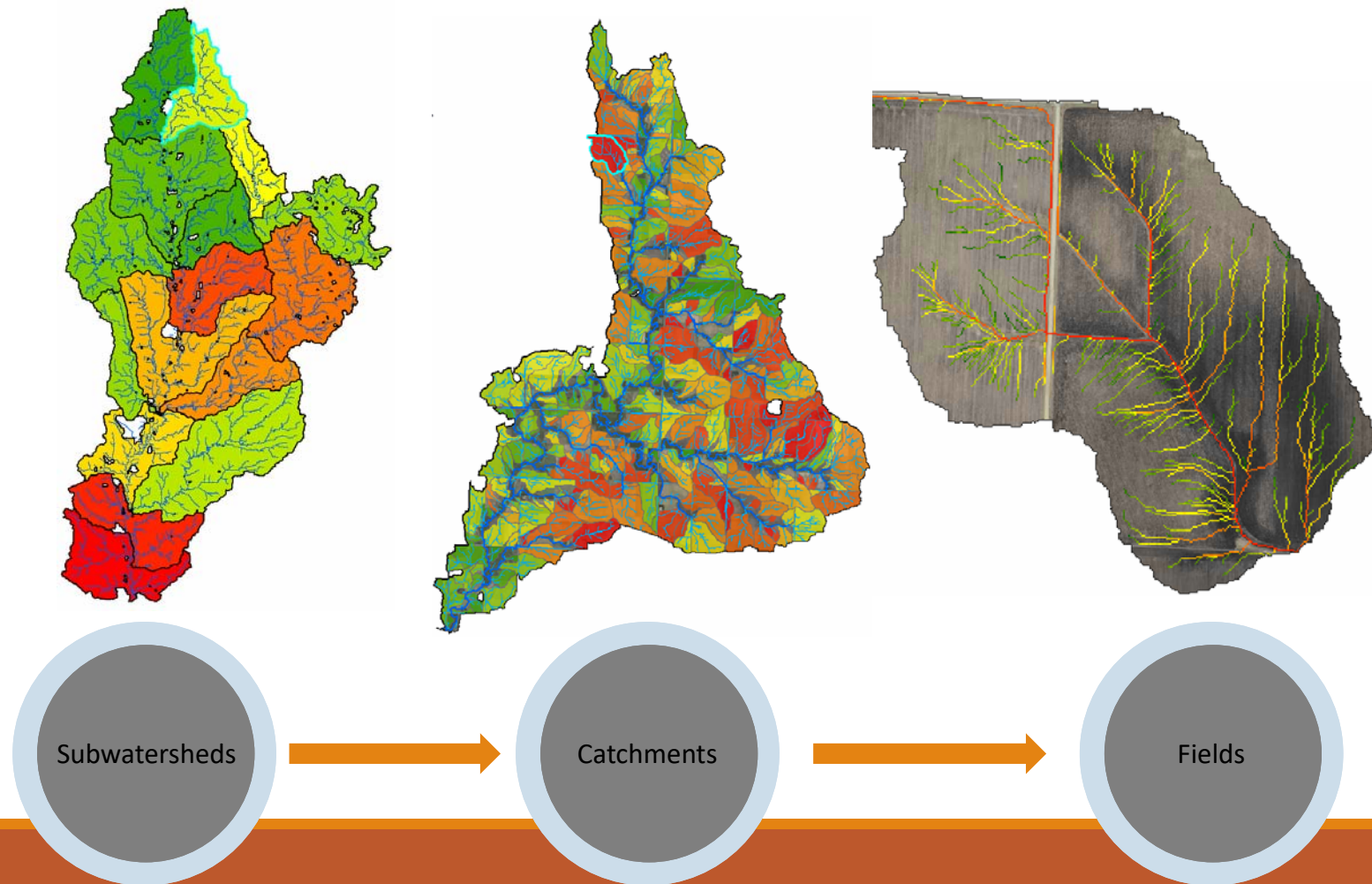




Water Quality Projects



Prioritizing



Minnewaska

Subwatershed Projects

Glenwood

FLOODING/WQ Concerns



Project Coordinated with Neighbor

70 Acres Treated
Grade Stabilization
Structure

Blue Mounds

Partnered
NRCS Designed
SWCD/WCTSA
Implemented/Financed

Barsnes



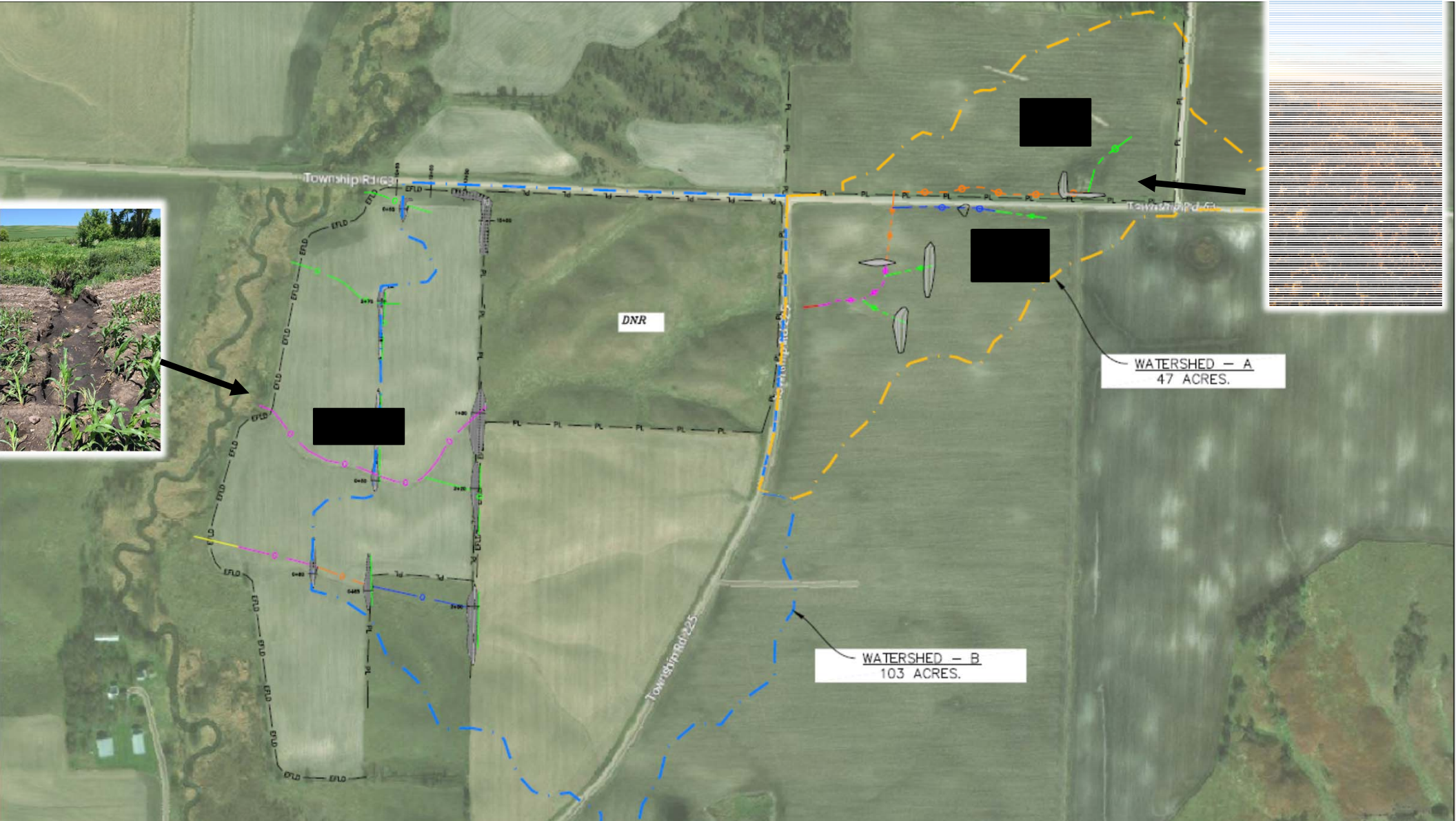
Subwatershed Projects

White Bear Lake

Minnewaska

buck





WATERSHED - A
47 ACRES.

WATERSHED - B
103 ACRES.

DNR

Township Rd 163

Township Rd 25

Township Rd 63

Conservation Reserve Program Grasslands Management



Crop Residue Management



Alternative Tile Intakes



Cover Crops/Grazing Programs

Water and Sediment Control Basins



Wetland Creation/Restoration



Lined Waterway



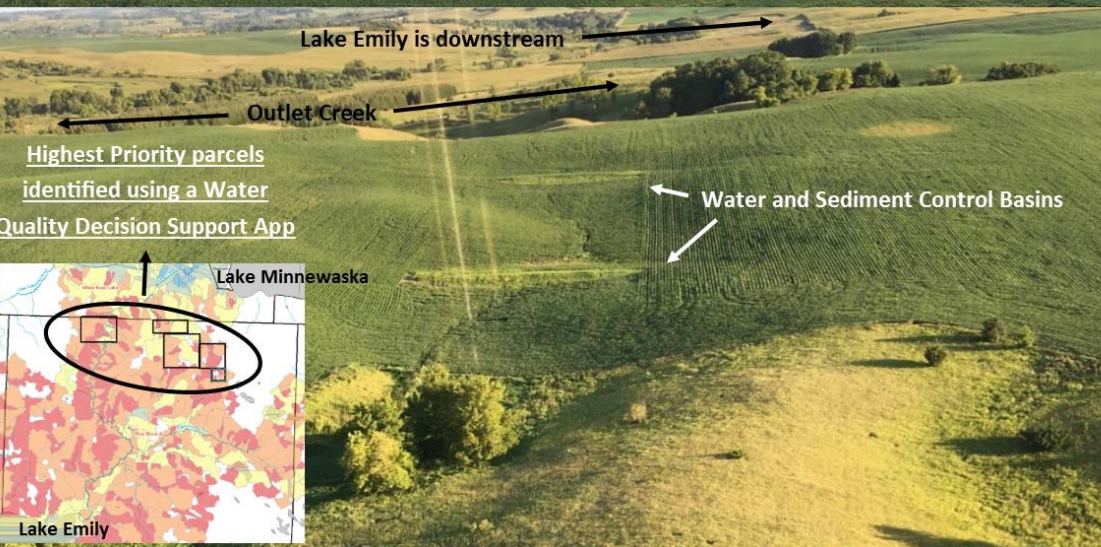
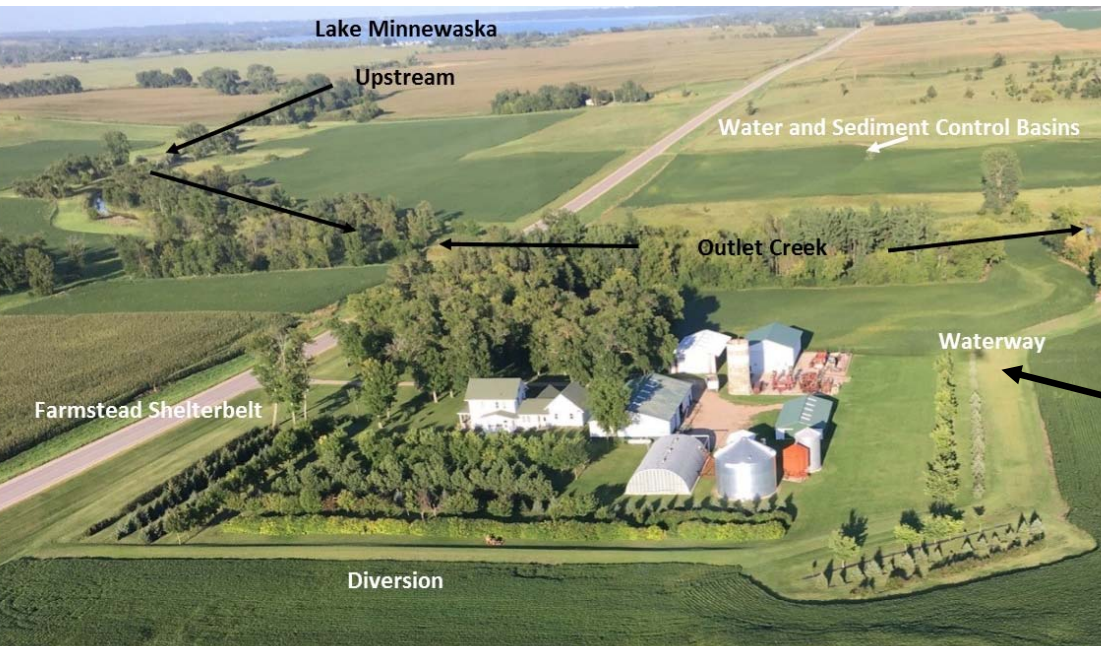
Shoreline Restoration



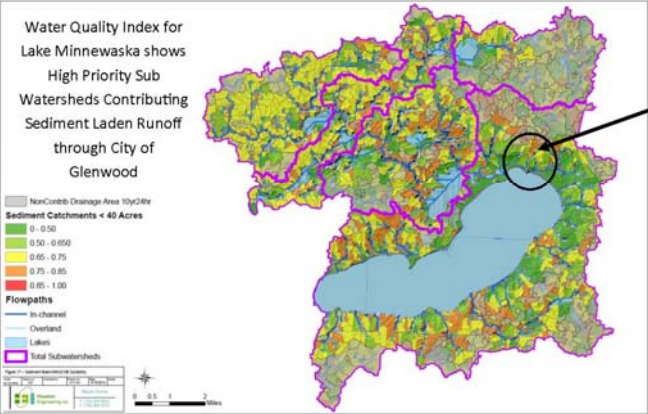
BEFORE



AFTER



City of Glenwood Study



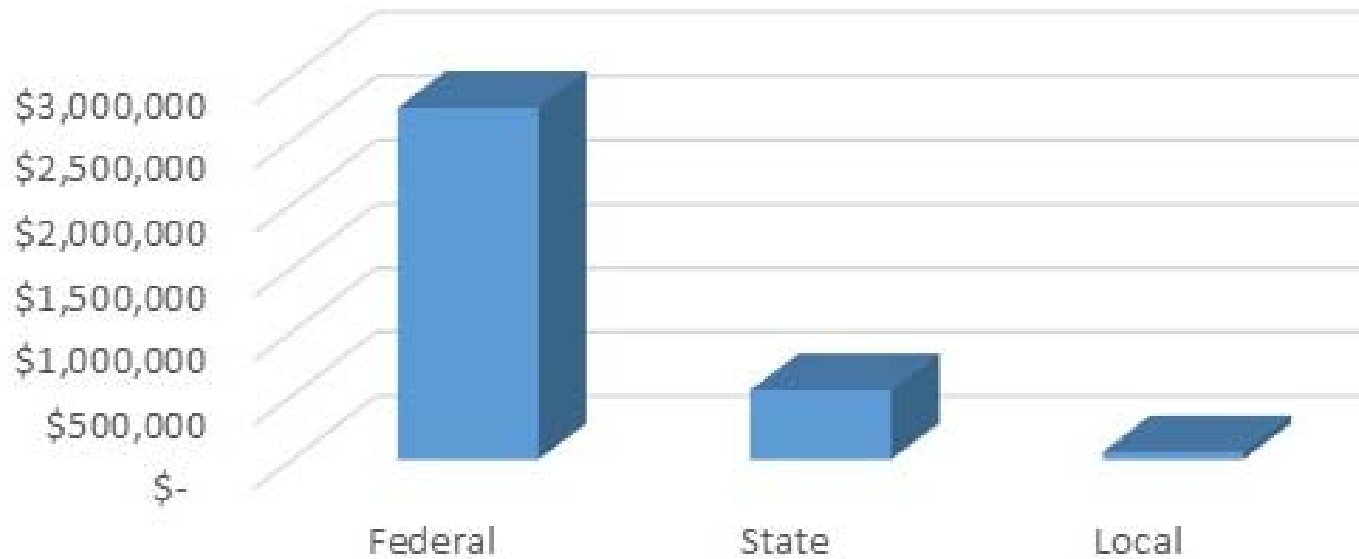


Eroding Ravines

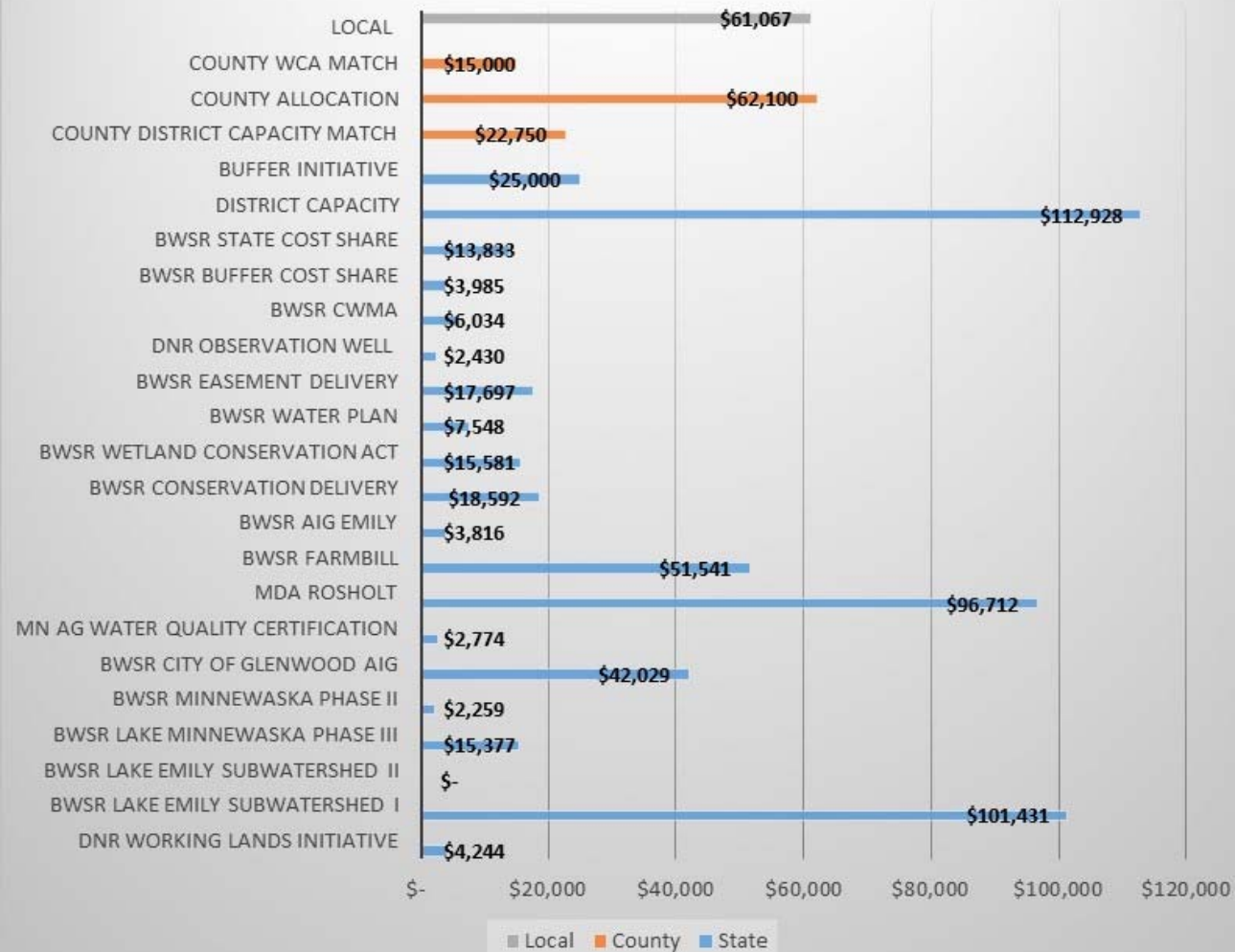


Grant Funds/Leveraged

2017 Leveraged Funding



2017 State/County/Local SWCD Fund Sources



Leveraged Funds

\$33 leveraged for every
\$1 County Funding of
County Allocation



Profit & Loss Statement 2017

Revenue

County	\$	126,692
Local	\$	11,916
State	\$	496,752
Charges for Services	\$	69,804
Other	\$	5,504
Total	\$	710,668

Expenditures

District Operations		
Personnel	\$	294,585
Other Services	\$	75,754
Supplies	\$	1,536
Capital Outlay	\$	33,287
Project Expenditures		
District	\$	12,251
Project Expenditures		
County	\$	8,139
Project Expenditures		
State	\$	277,991
Total	\$	703,543

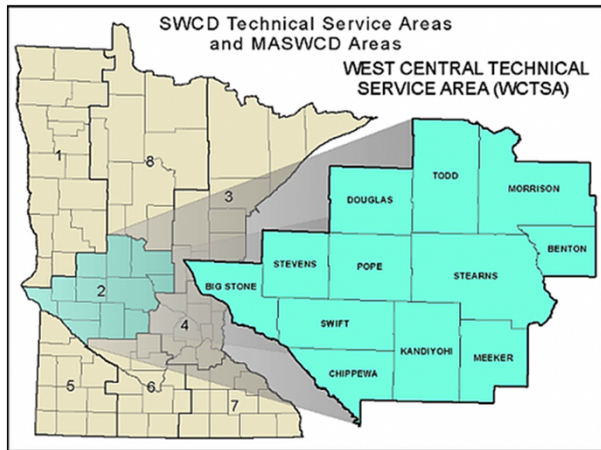
Excess Revenue Over

Expenditures \$ 7,125

Note: This includes cost share, technical assistance funding and staffing

***Only about 5-10% per grant can be used to pay for staffing. There are no federal dollars for SWCD staffing.**

IMPLEMENTATION TEAM



Chippewa River Watershed Project



POPE MINNESOTA
C O U N T Y
Enhancing quality of life by providing innovative services for our community every day.



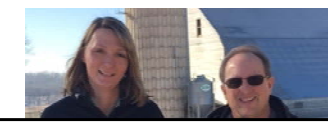
Landowners



Contractors



Stevens Soil and Water Conservation District
12 Hwy 28 E Ste 2
Morris MN 56267
(320) 589-4886 ext. 3
(320) 589-8836 fax
www.co.stevens.mn.us/SWCD/Main.htm



We Are the Local Connection to the Land Assisting Property Owners

