

This Document can be made available in alternative formats upon request

State of Minnesota  
HOUSE OF REPRESENTATIVES

NINETY-SECOND SESSION

H. F. No. 481

01/28/2021 Authored by Stephenson  
The bill was read for the first time and referred to the Committee on Legacy Finance

1.1 A bill for an act  
1.2 relating to parks and trails; appropriating money to acquire land for trail system  
1.3 along Elm Creek Greenway Corridor in Champlin.

1.4 BE IT ENACTED BY THE LEGISLATURE OF THE STATE OF MINNESOTA:

1.5 Section 1. ELM CREEK GREENWAY CORRIDOR; CITY OF CHAMPLIN;  
1.6 APPROPRIATION.

1.7 \$1,250,000 in fiscal year 2022 is appropriated from the parks and trails fund to the  
1.8 Metropolitan Council for a grant to the city of Champlin to acquire land along the Elm  
1.9 Creek Greenway Corridor for a trail system and for trail connections, including a bridge  
1.10 over Elm Creek, to connect the trail to Elm Creek Park Reserve. This is a onetime  
1.11 appropriation and is available until June 30, 2023.



# Elm Creek Greenway Corridor

HF 481

Feb 24, 2021



- Proposed Bridge
- Proposed Trail
- Existing Trail
- Elm Creek
- Parcel Boundaries
- Elm Creek Greenway Corridor



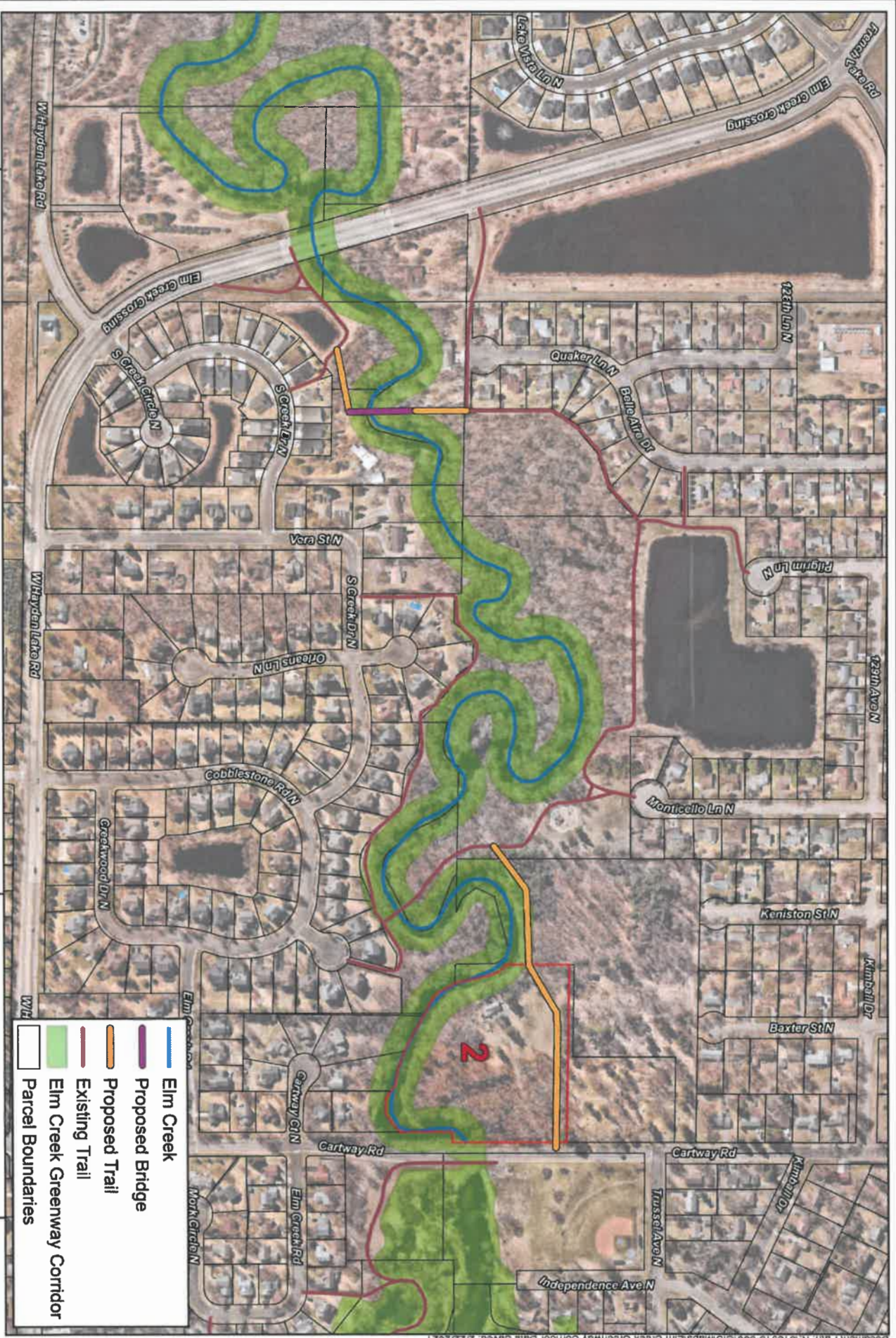




# Elm Creek Greenway Corridor

HF 481

Feb 24, 2021



-  Elm Creek
-  Proposed Bridge
-  Proposed Trail
-  Existing Trail
-  Elm Creek Greenway Corridor
-  Parcel Boundaries





















MINUTES OF THE REGULAR MEETING OF THE PARKS AND RECREATION COMMISSION OF THE CITY OF CHAMPLIN IN THE COUNTY OF HENNEPIN AND IN THE STATE OF MINNESOTA THEREOF:

REGULAR MEETING

MARCH 3, 2020

CITY COUNCIL CHAMBERS

Regular Session Call to Order	The Champlin Parks and Recreation Commission met in a Regular Meeting and was called to order by Chair Flandrick at 7:00 p.m.
Roll Call	Present: Chair Flandrick, Commissioners Broughton, Iannazzo, LaCroix, Lauer, and Musto.  Absent: Commissioner Eckert  Also present: Parks and Facilities Manager Charlie Lehn
Pledge of Allegiance	
Approval of Agenda	Motion by Commissioner Musto, seconded by Commissioner Lauer, to approve the agenda for the March 3, 2020 Work Session as presented. Voting in favor: Chair Flandrick, Commissioners Broughton, Iannazzo, LaCroix, Lauer, and Musto. Motion carried 6-0.
Approval of Minutes January 14, 2020 Work Session January 14, 2020 Regular Meeting	Motion by Commissioner Musto, seconded by Commissioner Broughton, to approve the minutes from the January 14, 2020 Work Session and the January 14, 2020 Regular Meeting as presented. Voting in favor: Chair Flandrick, Commissioners Broughton, Iannazzo, LaCroix, Lauer, and Musto. Motion carried 6-0.
Announcements Easter Egg Hunt	Mr. Lehn announced the Easter Egg Hunt will be held on April 10, 2020. The Hunt will be held at Andrews Park.
Spring Brochure 2020	Mr. Lehn announced the Spring Brochure has been mailed out.
Resident Forum	No one appeared to address the Commission.
RCA Parks & Trails Future Land Acquisitions	Mr. Lehn reviewed the 2040 Comprehensive Plan contains guiding principles that assist in directing staff and next twenty years of parks, trails, and recreational use within the City. This plan was adopted in 2019 by the (C)  <i>Within the 2040 Comp. Plan, land acquisition is outlined in Section 1, Chapter 4.2 (Community Characteristics Growth Forecasting this section more specifically explains tracts of land that should be considered as added parks and trails system. "Land tracts will also need to be considered for purchase along the Elm Creek Greenway to make a final contiguous connection through this area, and private parcels owned along these corridors will be considered for purchase in these connections. Finally, property along the east and southeast side of the Mill Pond will need acquisition to complete a parcel of land that would then connect Veterans Park to D.C. Chandler Park again as part of a connection that falls in line with a master plan process for the Mississippi Commons".</i>  As funding can be limited, staff is requesting the Parks and Recreation Commission establish a proposed land acquisition list for the City Council. This prioritized list recommends the properties listed below be considered for purchase before being considered for purchase in the parks and trails system. (These should be differentiated from those properties a development purposes): <ul style="list-style-type: none"><li>• Property at 519 and 701 East Hayden Lake Road (properties east of the Mill Pond).</li><li>• Property at 824 Cartway Road (South of the Cemetery along the Elm Creek).</li><li>• Property at 12650 Elm Creek Crossing (South of Trout Pond on the Elm Creek).</li></ul>



Historically, funding for these properties was sourced by the Park Reserve Fund. Future acquisitions may require other funding sources. It is to be understood that these properties may become available in a different order than the availability of these properties will be determined by the owner.

Mr. Lehn noted this was discussed at the Parks and Recreation Commission Work Session prior to this meeting. There may be an opportunity for Staff to request funding from Legacy Grants and the LCCMR.

Motion by Commissioner Lauer, seconded by Commissioner Broughton, to recommend the City Council approve the presented properties be considered for acquisition in the parks and trails system before other properties are considered. Voting in favor: Chair Flandrick, Commissioners Broughton, Iannazzo, LaCroix, Lauer, and Musto. Motion carried 6-0.

Park and Recreation  
Updates:

Trout Fishing Contest

Mr. Lehn stated the 1<sup>st</sup> Annual Trout Fishing Contest was a great success with approximately 500 people on the ice. Many prizes were given away. Mr. Lehn thanked the Commission, the Police Department and the sponsors for their support for this event. Twenty-five fish were caught. There were 1000 fish stocked in the pond.

Sections Hockey

Mr. Lehn stated the Sections Hockey Tournament was held 2 weekends ago. The turnout was very good and he wished all the teams the best of luck in the State Tournament.

Other Updates

At the next Parks and Recreation Meeting there will be plans for the trails by Jo Nunn Park and by the Public Works Building.

Chair Flandrick wished Mr. Lehn and the Mayor the best for their meeting with the Legislature tomorrow.

Adjournment

Motion by Commissioner Musto, and seconded by Commissioner Broughton, to adjourn the meeting. Voting in favor: Chair Flandrick, Commissioners Broughton, Iannazzo, LaCroix, Lauer, and Musto. Motion carried 6-0.

The meeting was adjourned at 7:15 p.m.

---

Gary Flandrick, Parks and Recreation Chairperson

ATTEST:

---

Charlie Lehn, Parks Facilities Manager



**4.1 INTRODUCTION**

Parks, trails, and open spaces are important to residents. They define neighborhoods, offer recreation opportunities, serve as open space for wildlife habitat and act as neighborhood gathering points that add a sense of community. Champlin is committed to meeting resident needs and maintaining the quality of our park system.

The Comprehensive Parks, Trails and Recreation Plan provides an analysis and decision making framework comprised of definitions, standards and policies, the application of which provides a method to evaluate existing systems and predict needs. The plan is a blueprint for decision-making, service provision and resource allocation.

The guiding principles for the plan are:

- Provide a variety of recreational opportunities for all ages;
- Explore ways to build upon the existing park and trail system; and
- Provide resources to maintain and improve existing park facilities.

The Parks, Recreation and Trail Plan consists of six sections.

1. Section One outlines community characteristics, including a summary of existing parks, the regional setting, and a list of major stakeholders and partners, a growth forecast, and an overview of park operations and potential system wide developments.
2. Section Two outlines the Park and Trail System Framework. This includes park and trail classifications, recreation facility standards and park service area criteria. These standards are used to assess and plan for community needs.
3. Section Three is a summary of the planning and public input process.
4. Section Four is a Needs Assessment and Recommendations analysis. The majority of this information pertains to the renovation and redevelopment of our park system, but also includes development of park space and trail connections.
5. Section Five establishes parks, recreation, trails and open space goals and policies.
6. Section Six is the implementation and strategy section.



**SECTION 1.****4.2 COMMUNITY CHARACTERISTICS**

Champlin is bordered by the Mississippi River and the City of Anoka to the north, the Elm Creek Park Reserve and the City of Dayton to the west, and the cities of Maple Grove and Brooklyn Park to the south. Champlin has 30 public parks comprising 295 acres and 25 miles of off-road trails throughout the community. The parks provide a wide range of recreational opportunities, while the trail system is a combination of off-road, on-road and internal park trails. An inventory of existing parks showing recreational facilities is attached as **Table 4-1**. A physical location of each park is shown in **Figure 4-1**.

Champlin is in the Anoka-Hennepin School District and has two public schools; Champlin Brooklyn Park Academy and Jackson Middle School, which have several athletic fields and playgrounds. The School District and City provide their own separate maintenance schedules and capital improvement purchases for their fields and facilities. The School District rents ice time from the City at the Champlin Ice Forum. Occasionally, the City and School District assist the other in resource and facility maintenance sharing upon special requests and needs.

Three Rivers Park District owns and manages a regional park, the 4,900 acre Elm Creek Park Reserve, 850 acres of which lies within Champlin's city limits. Elm Creek Park Reserve is designed to provide natural resource based recreation and education opportunities.

Three Rivers Park District is the implementing agency for regional trails in and around Champlin. The trail system within the Elm Creek Park Reserve, as well as the Coon Rapids Dam Regional Park, provides miles of regional paved trail opportunities. The Coon Rapids Dam Regional Park may undergo a proposed name change by Three Rivers Park District in the near future.

**NATURAL RESOURCES**

The City has many natural resources including the Mississippi River, oak savanna, oak woodlands, wetlands, creeks, small ponds, various prairie areas and the newly renovated Mill Pond in 2018. The Elm Creek Park Reserve has many other natural resources that help support flora and fauna environments.

The City is fortunate to have the Elm Creek meandering through it. Significant investments have been made to preserve the Elm Creek with the



goal to preserve a "linear greenway" along its shore. It is to be noted that the City has various land acquisitions that will need to take place in order to fulfill this vision plan and create a contiguous "greenway" trail corridor.

*HISTORIC AND CULTURAL RESOURCES*

Champlin has a rich history with a strong connection to the Mississippi River. The Champlin Historical Society actively promotes the history and helps manage the historic Dunning School, situated on park property, in partnership with the City of Champlin.

*GROWTH FORECASTS*

Champlin's 2016 population was 23,343. By the year 2040, the population of Champlin is predicted to be 24,000. The table below outlines actual household figures through 2016 and forecasts through 2040:

**Table 4-2**

	<b>1990</b>	<b>2000</b>	<b>2010</b>	<b>2016</b>	<b>2020</b>	<b>2030</b>	<b>2040</b>
Population	16,849	22,193	23,089	23,343	23,200	24,200	24,000
Households	5,423	7,425	8,328	8,442	8,800	9,500	9,600
People per Household	3.11	2.99	2.91	2.76	2.64	2.55	2.51
Employment	1,110	2,734	4,012	4,116	4,400	4,600	4,800

The City's park system is expected to support forecasted populations through 2040. Trails are added as development is completed in the northwest, commercial, and river areas in an attempt to connect neighborhoods to existing park and trail amenities. While there are no additional parks planned in the City, the future development of the last tracts of land will need to be studied to determine future park implications should proposed densities be changed. Land tracts will also need to be considered for purchase along the Elm Creek Greenway Corridor in order to make a final contiguous connection through this area, and private parcels owned along these corridors will need to be considered in these connections. Finally, property along the east and southeast side of the Mill Pond will need acquisition consideration in completing a parcel of land that would then connect Veterans Park to D.C. Chandler Park again as part of a contiguous land connection that falls in line with a master plan process for the Mississippi Commons.



*GENERAL RECREATION TRENDS*

Recreation interests and participation are influenced by many factors. Age, population demographics, access to facilities, amount of leisure time, interest in the environment, new recreation technology, and social trends all influence recreation participation. In general, people are looking for quality recreation close to home, but are willing to travel to obtain better quality or more specialized activities. The following recreation trends have been observed in the Twin Cities area over the last ten years:

- Yoga and personal fitness at private gyms is increasing
- Trail use has boomed (walking, running, biking and in-line skating)
- Contact and non-contact recreation activities are growing depending on the sport (i.e. lacrosse and soccer)
- Most adult team sports participation is in decline as there are many recreational opportunities or not enough time in private lives to participate
- More youth are specializing in one sport and training year-round
- Disc golf has increased in popularity
- Participation in female sports activity has increased
- Off-leash dog parks are popular
- Pickle-ball is becoming a popular pastime
- Lawn bowling is becoming a common recreational activity and gaining popularity
- Adult volleyball is increasing in popularity

*RECREATION TRENDS IN CHAMPLIN*

Recreation participation in Champlin will continue to grow as the community grows. The following local trends are based upon recent participation and public comments:

- Splashpad recreation for small children is recognizable in Champlin's Andrews Park
- Increase in trail use and biking
- Extended seasons of play for baseball, softball and soccer
- Increased interest in flying drones
- Use of outdoor ice has diminished as youths have other opportunities
- Increased requests for park shelter rentals has grown tremendously and in some cases requests for public meeting room space exceed our capabilities
- Increased interest in opportunities for Senior Citizens
- Our "Learn to Skate" programs continue to be popular
- Adult softball leagues are in decline but yard games are becoming more popular, as well as adult volleyball