



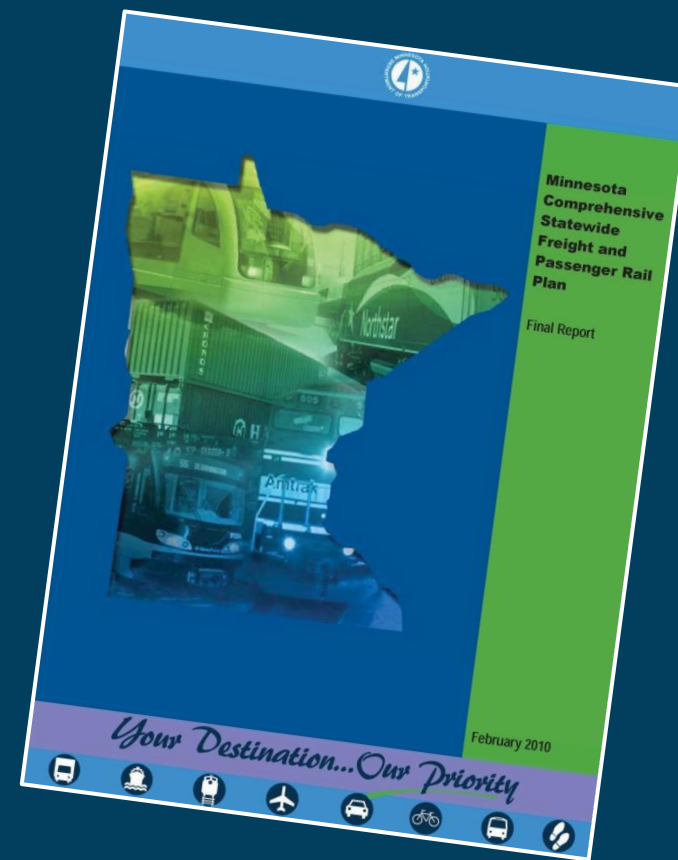
Thursday, February 2, 2017

# 2010 State Rail Plan

## Key Accomplishments

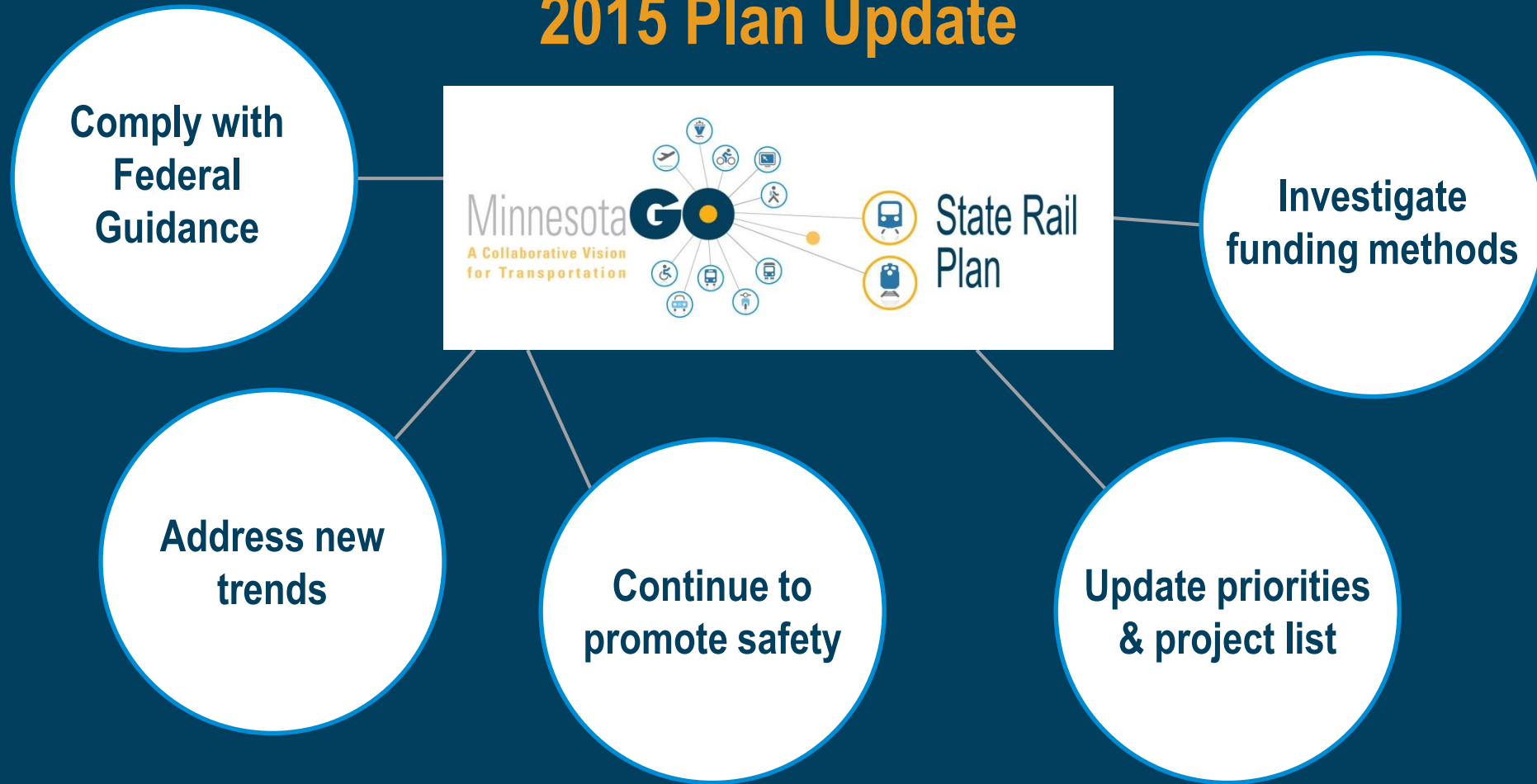
### Developed:

- Vision Statements
- System inventory
- Potential future statewide passenger rail system
- Priority corridors & investment needs
- Public and private sector roles



# What's New

## 2015 Plan Update



# Minnesota's Rail System

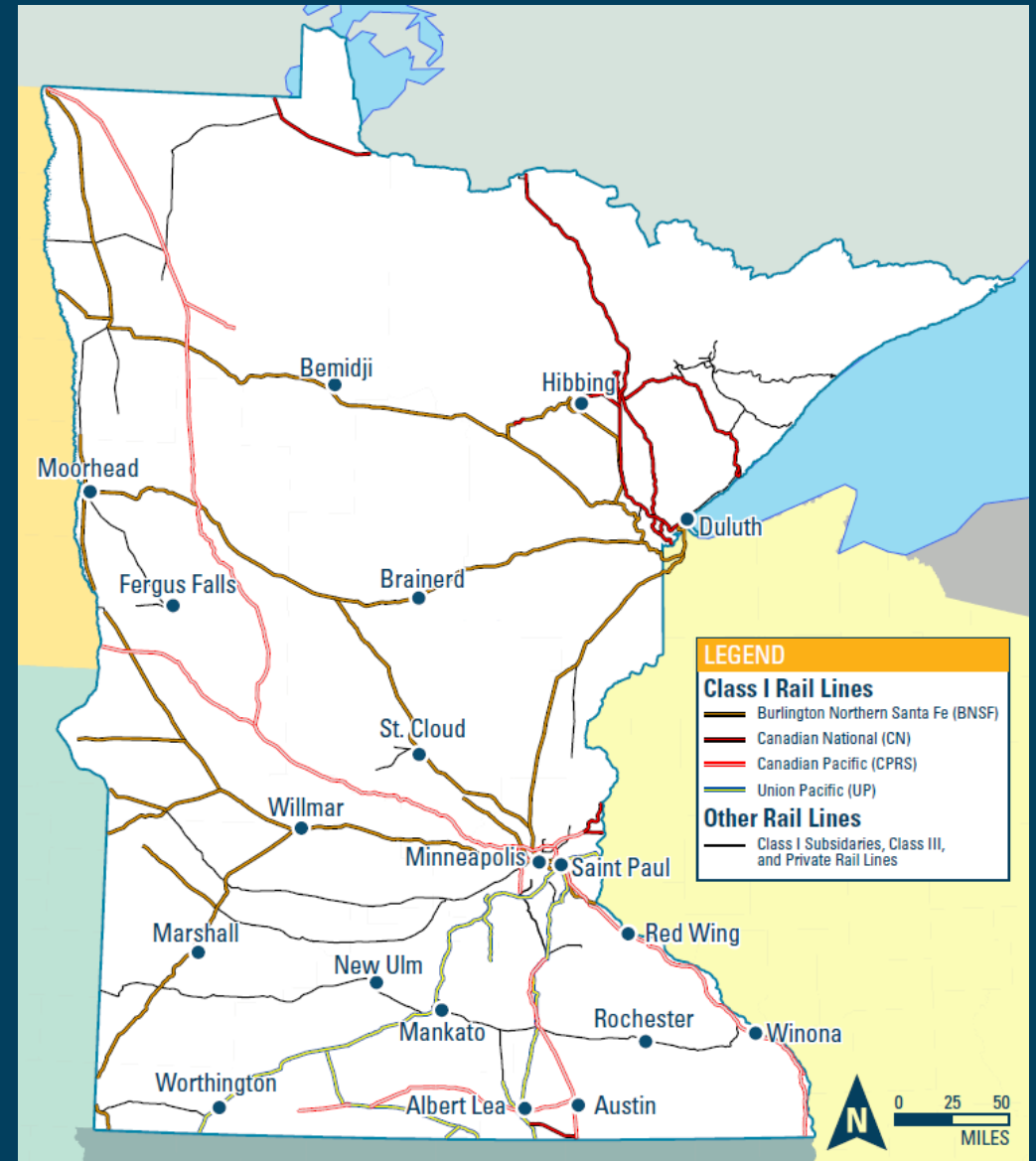
## Freight Railroads

About **4,500** miles

**4** Class I Railroads

**1** Class 2 Railroad

**17** Class 3 & Private Railroads

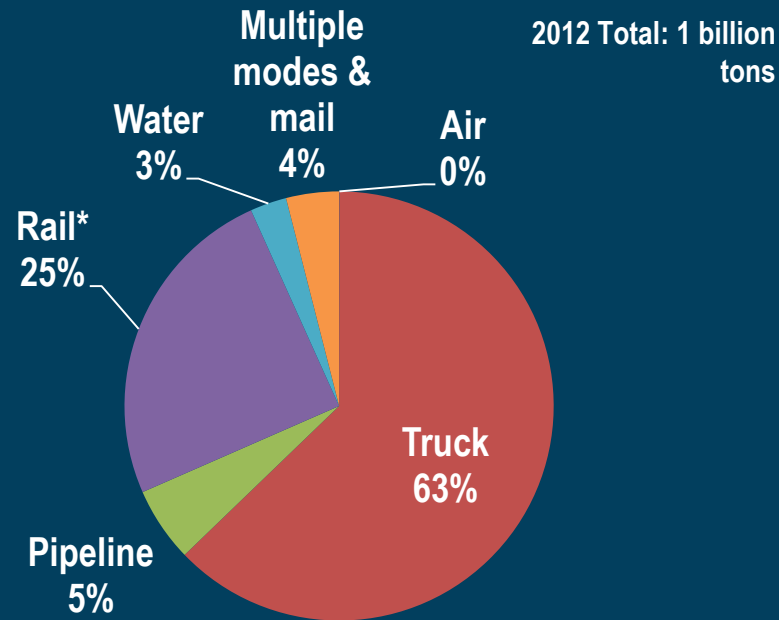


# Minnesota's Rail System

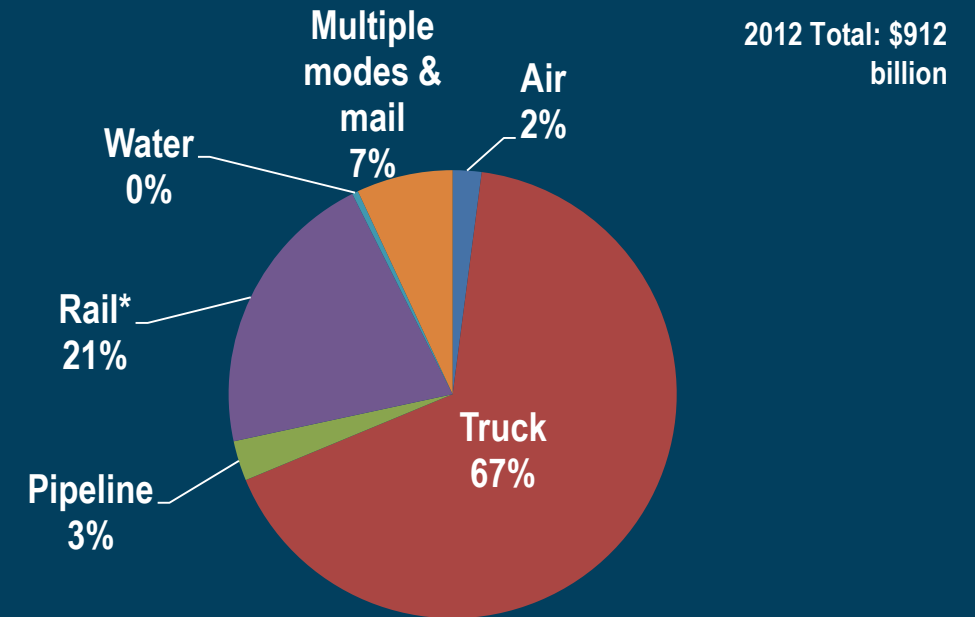
## Freight Rail

Minnesota Freight Mode Share, 2012

### By Weight



### By Value



Source: FHWA FAF3 2015 Provisional estimates and STB 2012 Confidential Carload Waybill Sample  
Note: \*Rail intermodal was excluded from Multiple Modes and Mail and included in Rail

# Minnesota's Rail System

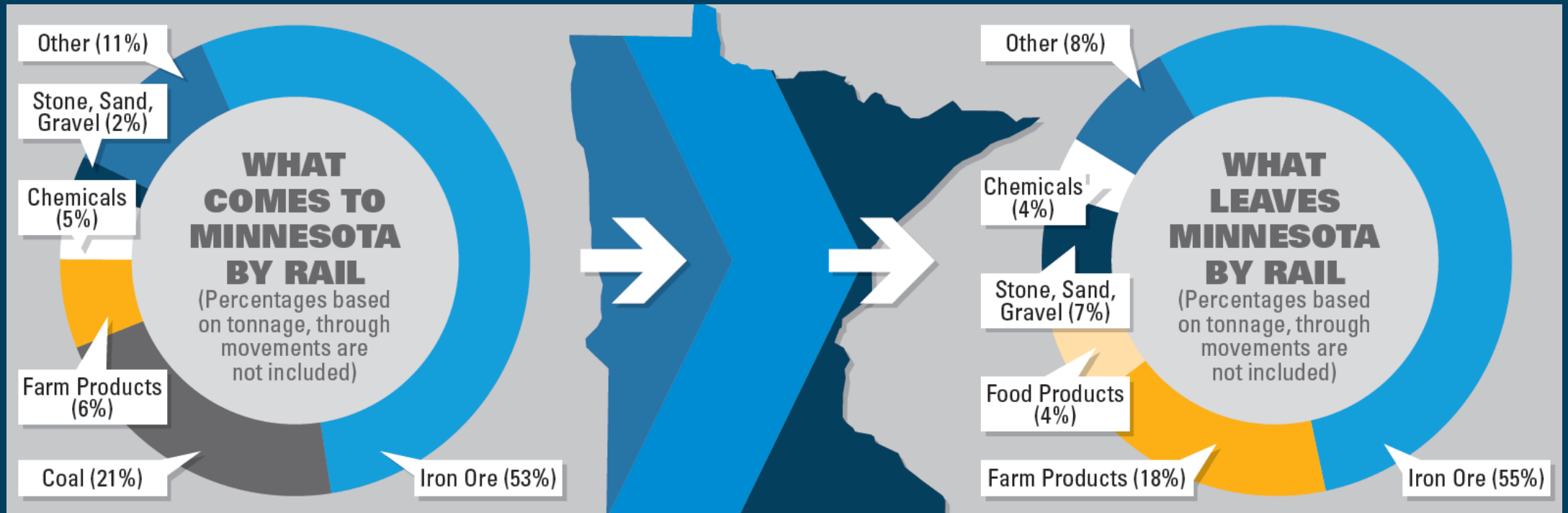
## Freight Rail



Rail is especially important in moving bulk commodities such as minerals and agricultural products

# Minnesota's Rail System

## Freight Rail



# What We've Heard

## Open Houses

### Themes:

- Concern for rail safety
- Need to address congestion
- Impacts of Bakken oil boom
- Interest in passenger rail
- Amtrak reliability





# What We've Heard

## Stakeholder Meetings

- 3 Class I Railroads
- Several Class III Railroads
- Railroad Organizations
- Statewide Industry Associations

### Common Trends

- Rail volumes increasing
- Rail-related employment significantly increased
- Most important topic is now rail safety

### Common Concerns

- Financial burden Positive Train Control
- Rail-related funding from public sector
- Capacity constraints & access to markets

# What We've Heard

## Public Comments

### Key Themes:

- Rail congestion
- Rail impacts
  - Noise, traffic and vibration
- Amtrak delays
- Passenger rail

### Letters & Resolutions:

- All Aboard MN
- MN Cities: Farmington, Lonsdale, Northfield, Rosemount, Savage
- Northfield Economic Development Authority
- Freeborn County
- MN Farm Bureau

# What's New

## New Trends

- Trade and economic development
- Congestion mitigation and traffic operations
- Safety and security
- Energy and the environment
- Land use and community impacts



# What's New

## Safety

The plan includes an increased emphasis on rail safety in response to stakeholder and public engagement.

- Includes findings of MnDOT grade crossing study
- Rail safety improvements incorporated into project list



# What's New

## Funding Methods

- **Federal**
  - TIGER & FASTLANE Grants
  - CMAQ Program
  - Rail programs in FAST Act
- **State**
  - No dedicated sources now
  - Possible MSRI expansion
- **Local**
  - County RR Commissions
  - RRA general funds, tax levies
- **Private**
  - Freight company revenues
  - Private passenger initiatives & investments

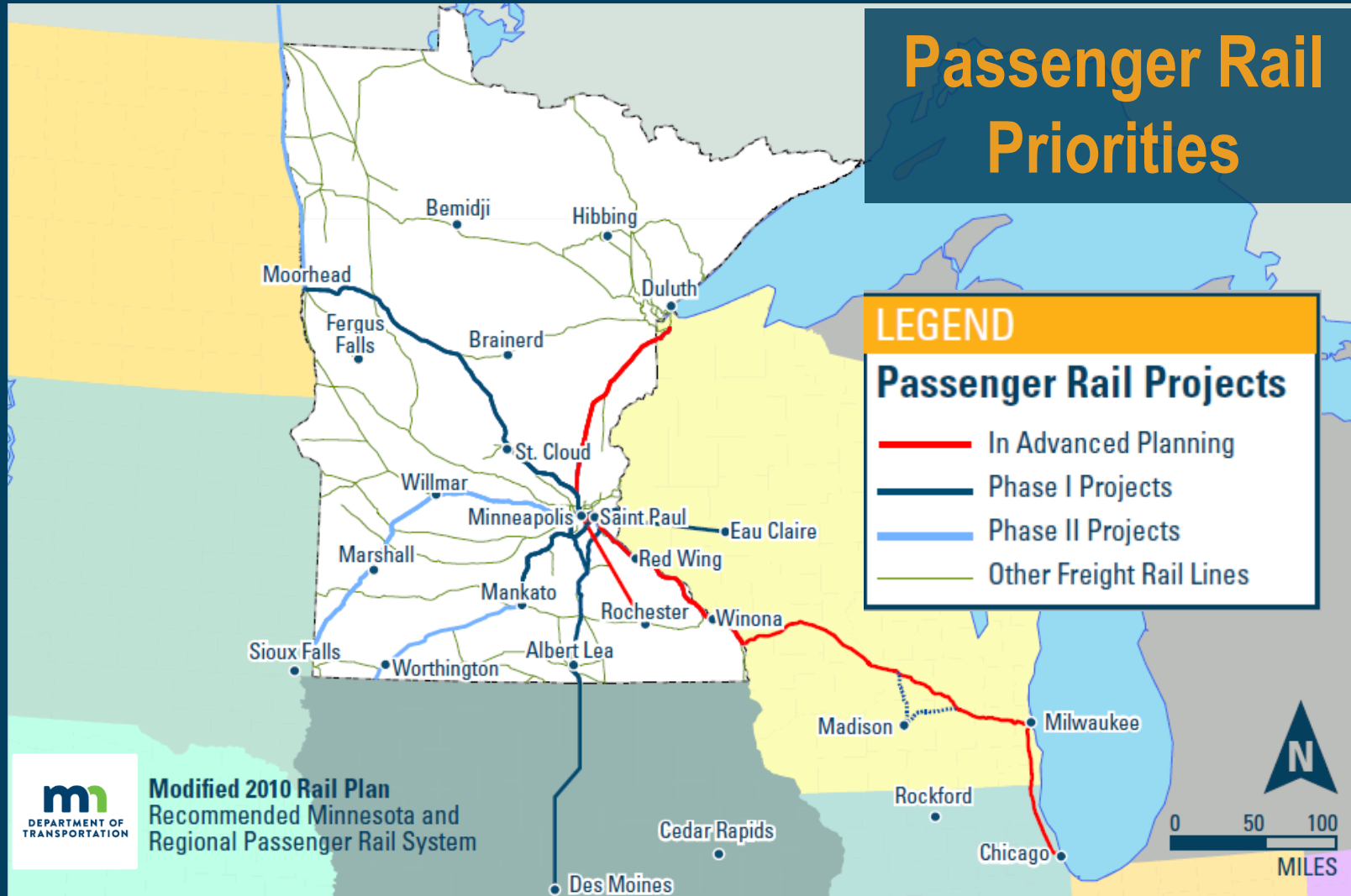
# What's New

## Priorities and Project List

### Project List

- Over 150 projects totaling \$6.6 billion
  - Passenger (Phase I): \$3.1 billion
  - Freight: \$3.5
- Sourced from 2010 State Rail Plan, Grade Crossing Safety Study, TIGER applications
- Organized by areas of impact (safety, capacity, economic development, etc.)

# What's New



# What's New?

## Passenger Rail

### New Station

- Saint Paul Union Depot
- Investments in Target Field Station

### Intercity Passenger Rail Planning Activities

- Second Empire Builder train to Chicago
- Twin Cities – Milwaukee – Chicago
- Minneapolis – Duluth/Superior





# What's New?

## Passenger Rail Goals

- Advance corridors incrementally to build ridership and system advantages, leaving open all future options for viable improvements
- Continue to participate with the Midwest Regional Rail Initiative States
- Develop an intrastate intercity passenger rail network connecting the Twin Cities with viable service to major outlying regional centers
- Develop all services with the ultimate goal to connect to both the Target Field Station and St. Paul Union Depot.

# What's New?

## Passenger Rail Goals

- Prioritize project qualified corridors based on state of readiness, sequencing depending on financing, right of way acquisition, and agreements with freight railroads.
- Establish rail connections to intercity and commuter rail markets in Wisconsin and Minnesota, to the I-35 Corridor, the Red River Valley, the eastern plains and Canada, as demand warrants.
- Promote energy-efficient technology and efficient transportation through expanded use of rail and intermodal shipping.

# Thank you!



Peter Dahlberg, Program Manager  
Office of Freight & Commercial Vehicle Operations  
651-366-3693  
[Peter.Dahlberg@state.mn.us](mailto:Peter.Dahlberg@state.mn.us)

Dan Krom, Director  
Passenger Rail Office  
651-366-3193  
[Daniel.Krom@state.mn.us](mailto:Daniel.Krom@state.mn.us)

[www.mndot.gov/planning/railplan](http://www.mndot.gov/planning/railplan)