



Minnesota House of Representatives

Joint Early Childhood, Housing Finance and Policy, and Preventing Homelessness meeting

Homework Starts with Home Prenatal to Pre-K expansion

February 11, 2022

Participants today

- Erin Bailey, Assistant Commissioner and Executive Director, Children's Cabinet
- Eric Grumdahl, Deputy Director, Minnesota Interagency Council on Homelessness
- Nikki Kovan, Early Learning Division Director, Minnesota Department of Education
- Dan Kitzberger, Legislative Director, Minnesota Housing

To describe and field members' questions about:

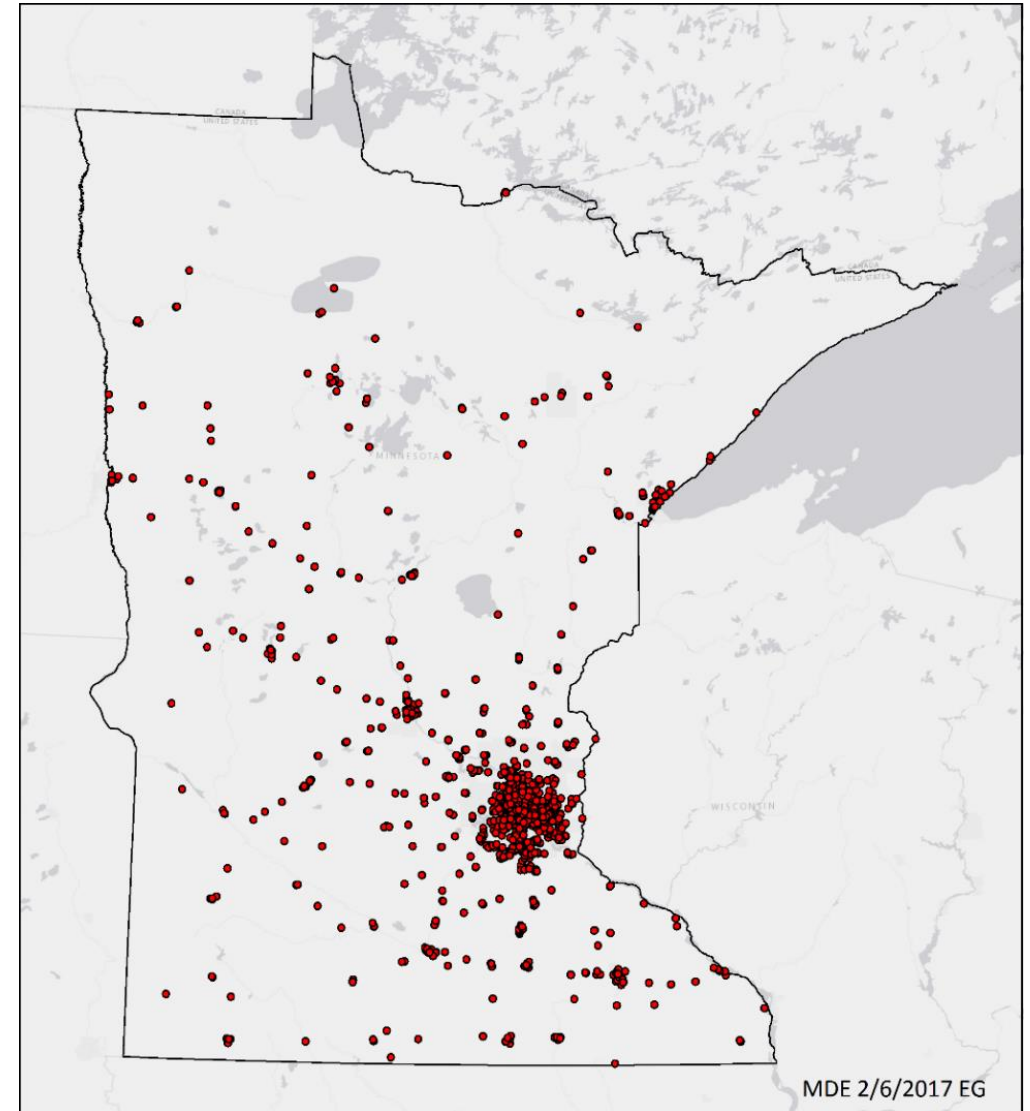
- The scale of unmet needs for children and families facing housing instability
- The resources we have today to respond
- The impact of and cross-agency coordination that led to Governor's Supplemental Budget proposal to expand Homework Starts with Home



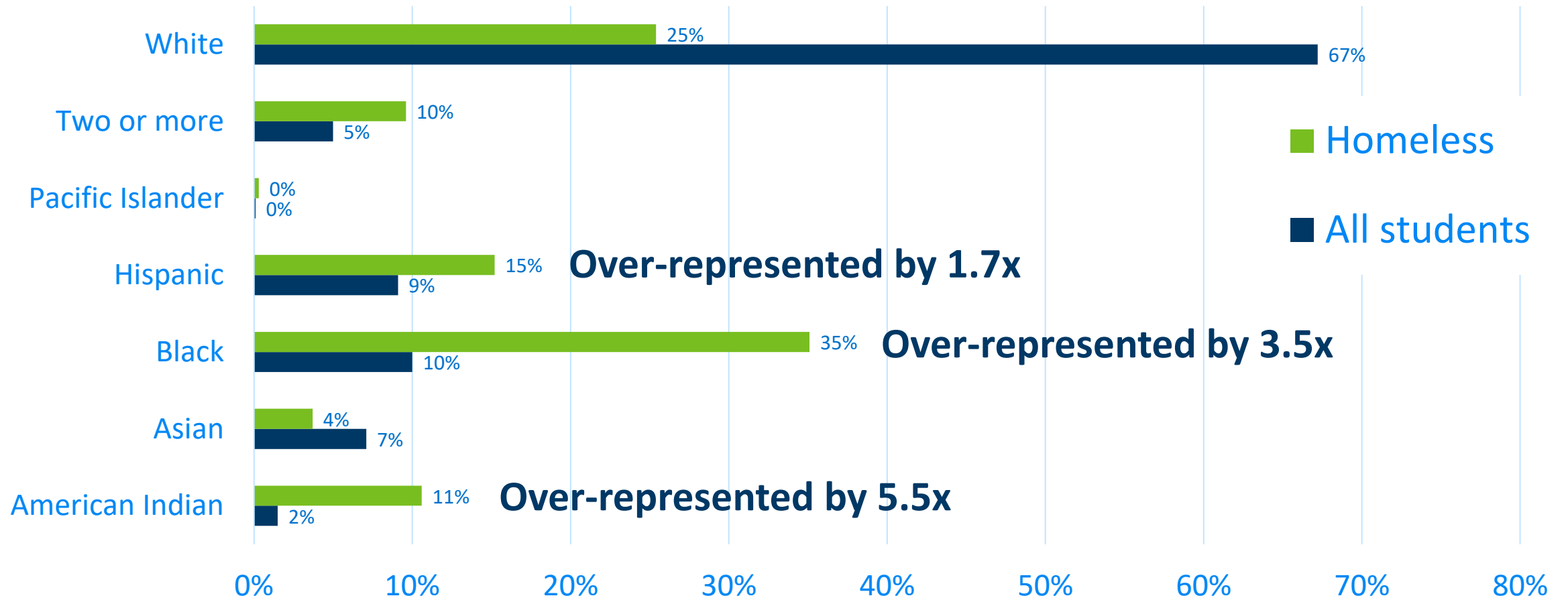
Understanding scale of unmet needs

Student homelessness is widely distributed

- 9,060 students experiencing homelessness were enrolled in Minnesota public and charter schools on October 1, 2019.
 - 1,172 schools and 309 school districts
 - 77 of Minnesota's 87 counties
- Roughly twice as many students throughout each school year as the October 1 count.
- Student homelessness disproportionately impacts students of color, American Indian students, LGBTQ students, and students with disabilities.



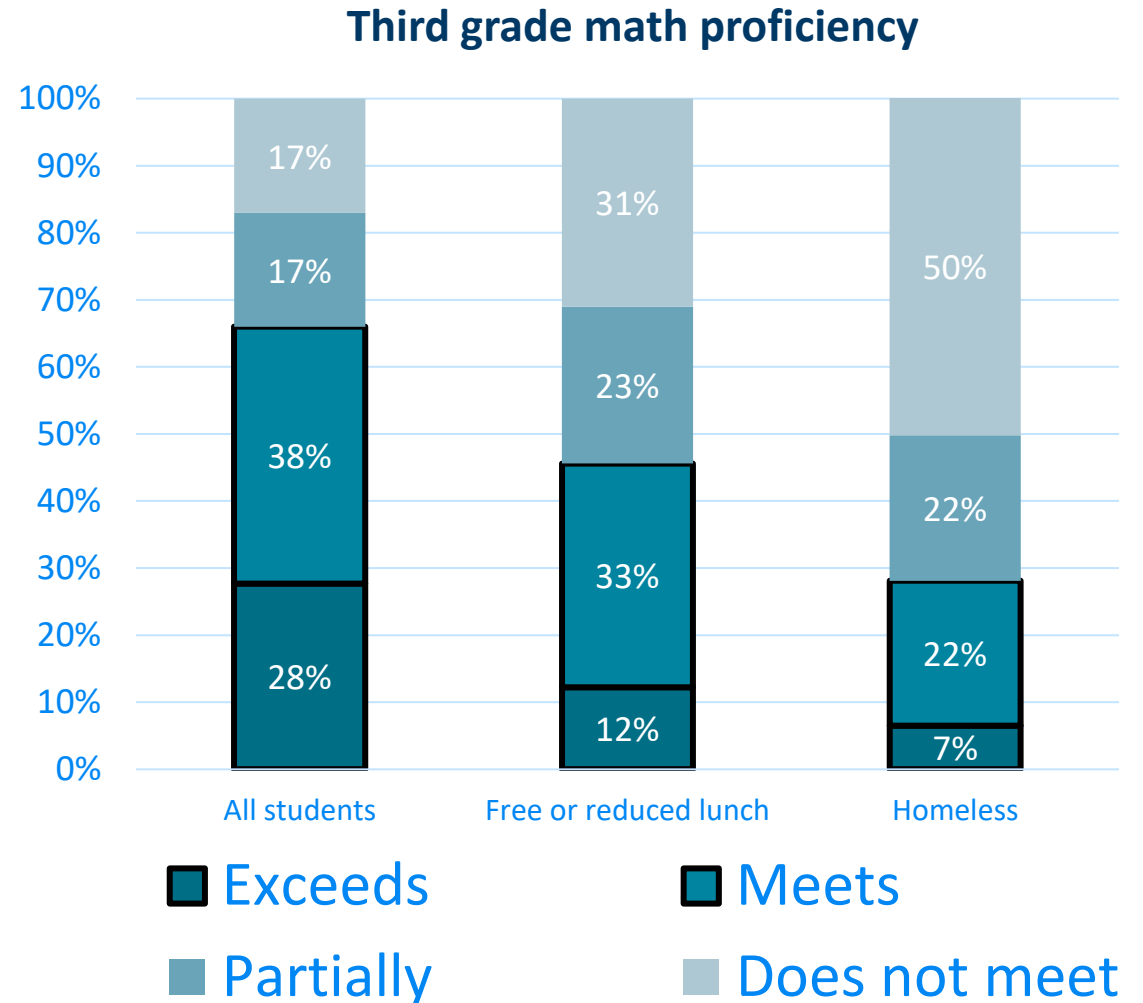
Homelessness reflects profound racial and ethnic disparities



High risks of homelessness

Research documents risks of homelessness for children in:

- Language and literacy.
- Health and access to health care and services.
- Likelihood of child welfare involvement.
- Cognitive, social-emotional, and physical development and attainment of early developmental milestones.
- Reading and school readiness and academic success.

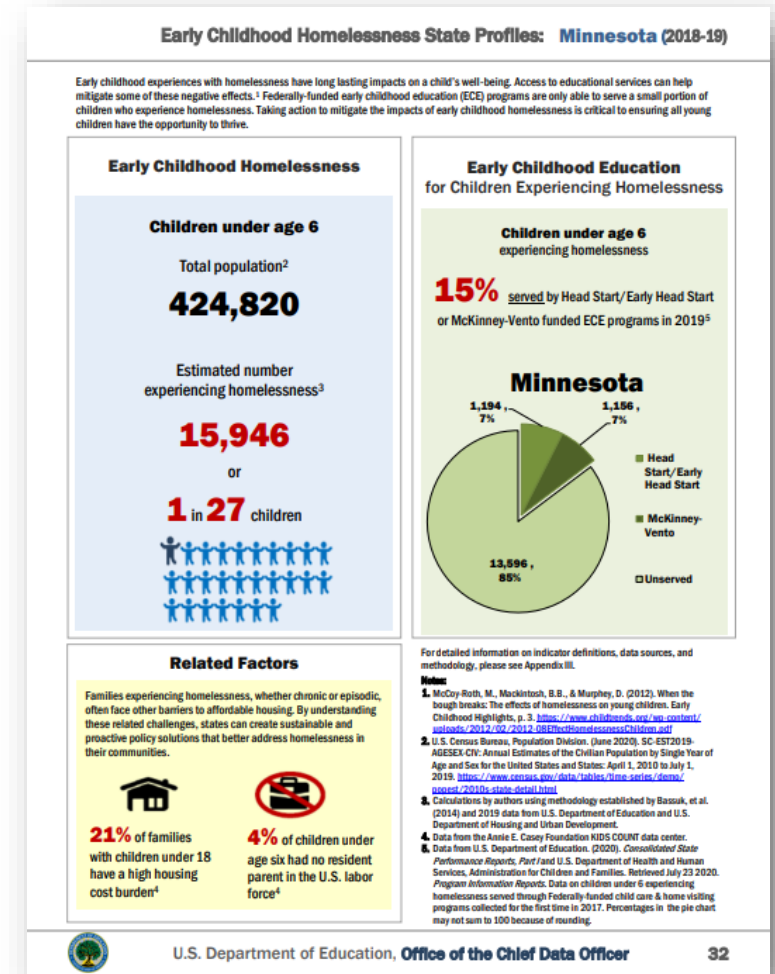


Triangulating scale of homelessness in early childhood

- Comprehensive, reliable data on rates of homelessness in early childhood (comparable to school-based counts for PreK-12) do not exist.
- U. S. Dept. of Education’s estimates that **15,946 children under age 6 in Minnesota experienced some form of homelessness** during the 2018-2019 academic year.
- This translates to **1 in 27 children**.

Source:

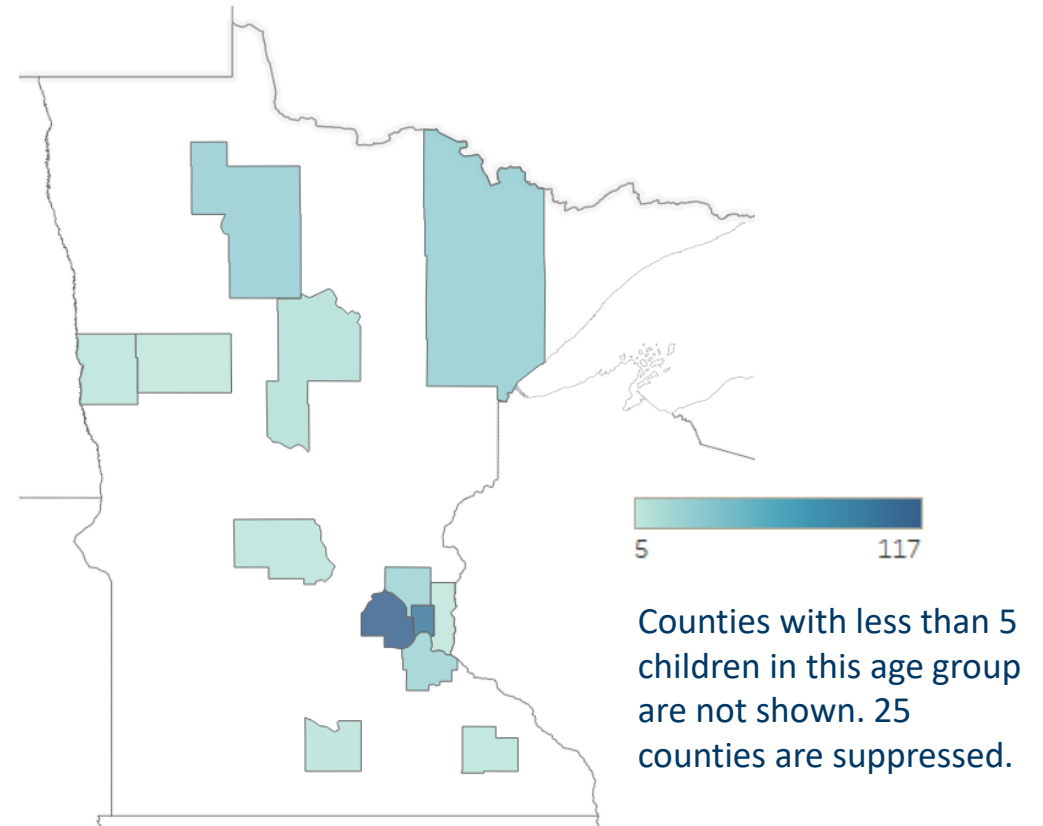
U. S. Department of Education, *Early Childhood Homelessness State Profiles 2021*, <https://www2.ed.gov/rschstat/eval/disadv/homeless/early-childhood-homelessness-state-profiles-2021.pdf>



Children under one year experiencing homelessness

- An estimated **300 – 400 infants in Minnesota experience homelessness at any point in time** among families receiving public assistance
- Homeless Management Information System records show approximately **500 children born while their families are homeless each year**

Count of Children Under One Year Experiencing Homelessness, by County



Minnesota Department of Human Services. MAXIS System. St. Paul: Minnesota, 2020.



Supports for families with children experiencing homelessness

Identified Children Experiencing Homelessness in Early Childhood Programs

- In FY21, 27% of **Early Learning Scholarships** (3,309 children) were awarded to a child that has or is currently experiencing homelessness (McKinney-Vento definition).
- In FY21, 7% (840) of children accessing **Head Start** were reported by Head Start programs to be experiencing homelessness (McKinney-Vento definition).
- In FY21, about 4% of families participating in **Family Home Visiting** with data available were identified as experiencing homelessness
- Based on August 2021 data, 6.7% of children accessing the **Child Care Assistance Program** were experiencing homelessness, of those, 61.9% were age 0-5.

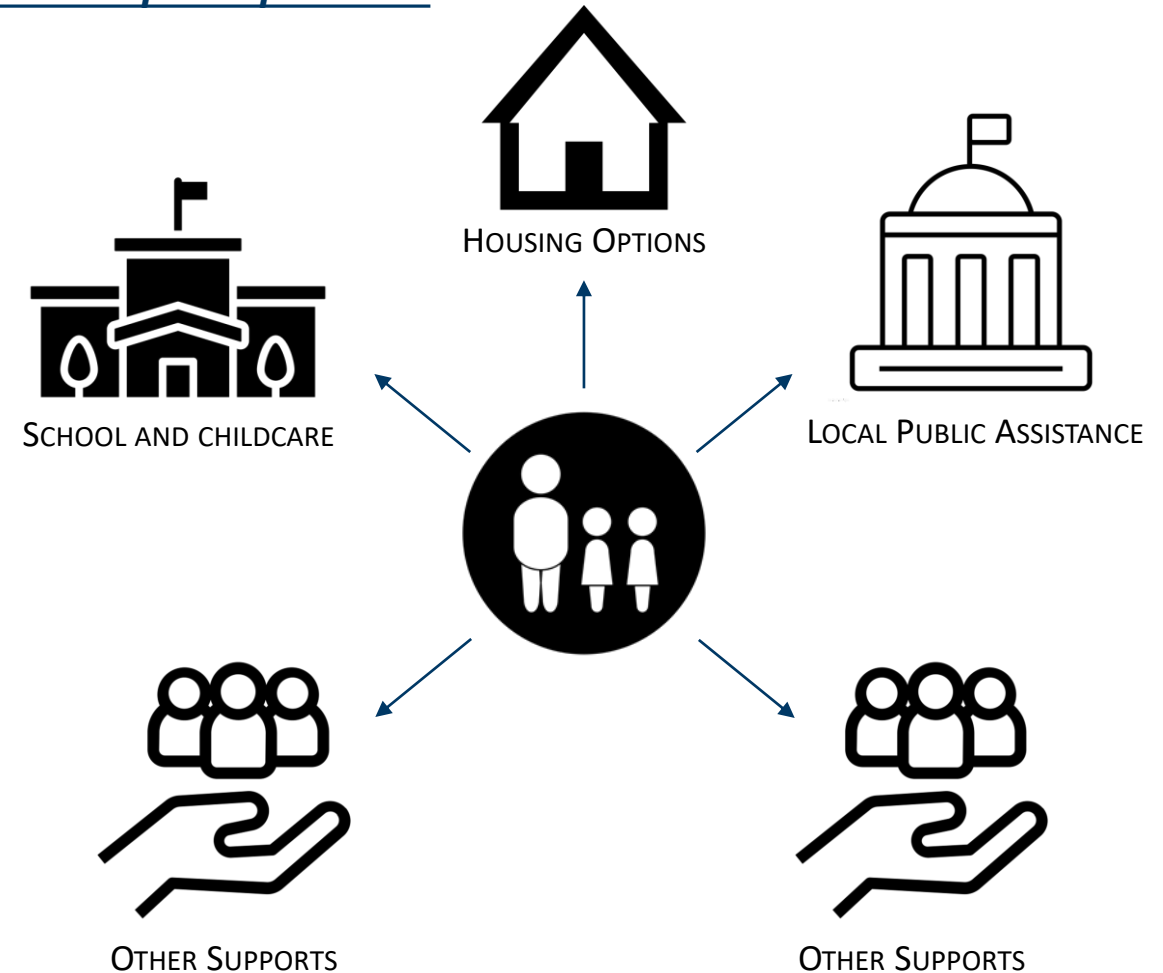
Other targeted homelessness interventions

- Education for Homeless Children and Youth program and other school-based supports under McKinney-Vento Act
- Family Homeless Prevention and Assistance Program
- Local Homeless Prevention Aid (forthcoming)
- Detailed review of targeted homeless programs:
<https://www.house.leg.state.mn.us/committees/minutes/92017/88863>
- Mainstream economic assistance, health care, and human services programs also play a critical role

How the intervention works

- Network approach to organizing supports to be most effective for families and their children
- Locally-defined partnerships
- Rental assistance and financial assistance to bring housing options in reach
- Practice model for support services that adapting best practices to local circumstances and opportunities

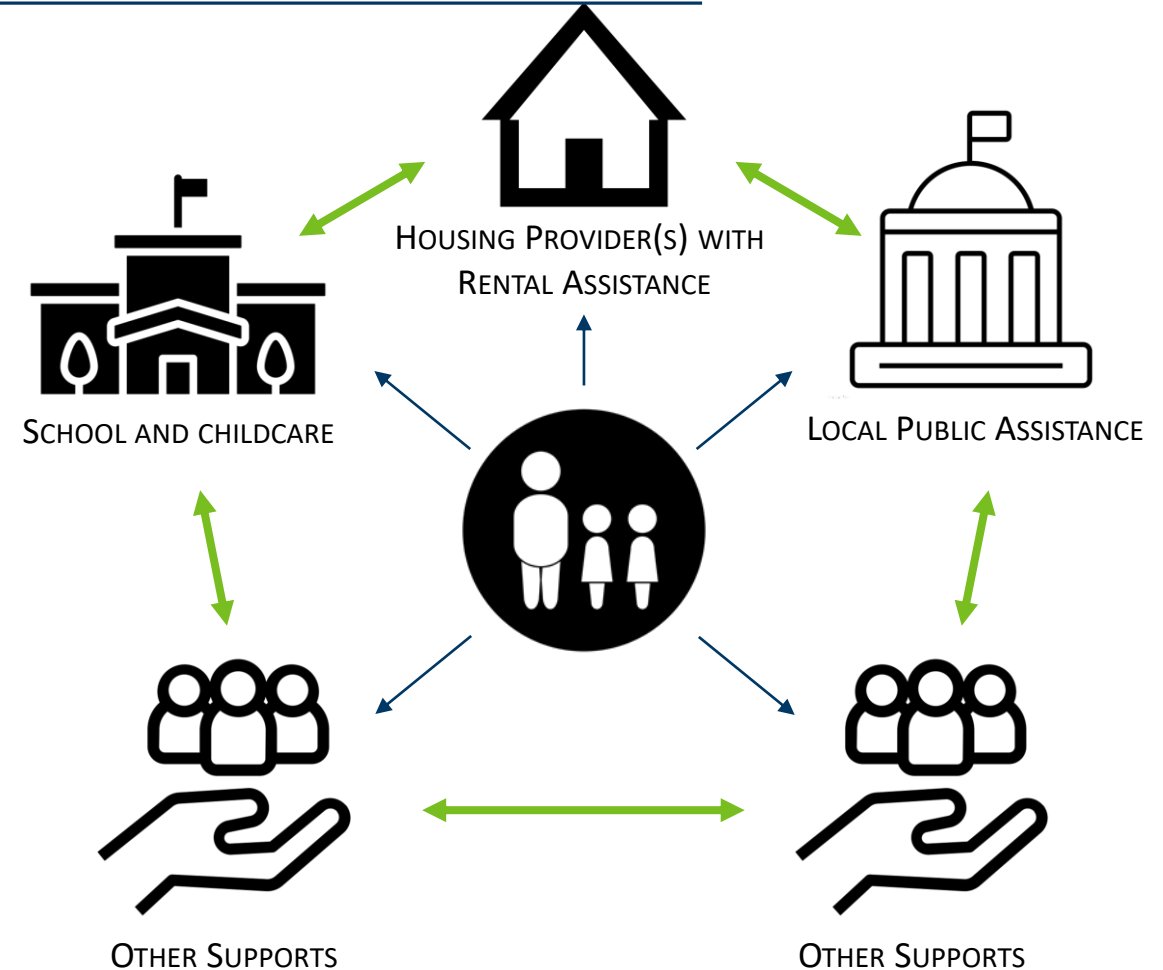
Status quo experience



How the intervention works

- Network approach to organizing supports to be most effective for families and their children
- Locally-defined partnerships
- Rental assistance and financial assistance to bring housing options in reach
- Practice model for support services that adapting best practices to local circumstances and opportunities

Under Homework Starts with Home



Homework Starts with Home timeline and scale

Rental Assistance Pilot for Homeless and Highly Mobile Families with School-Age Children (“HHM Pilot”)

- Three grantees
- \$4 million over three appropriations
- 277 families

HSWH – Round 1

- Five grantees
- \$4.15 million; three sources
- At least 239 families

HSWH – Round 2

- Three grantees
- \$3.95 million; two sources
- At least 324 families



HSWH – Planning Grants

- Three grantees
- \$100,885

HSWH – Round 3

- Three grantees
- \$3.5 million; two sources
- At least 324 families

Interagency evaluation

Homework Starts with Home Research Partnership

Ongoing research and evaluation efforts

Preliminary evaluation of HHM Pilot (2014 – 2017):

- 90% of families acquired stable housing
- Stabilized school attendance (compared to decreased attendance among other homeless students)
- Parental income up \$2,805 per year

Full report:

https://mn.gov/gov-stat/pdf/2017_03_01_HHMS_Report.pdf

Homework Starts with Home Research Partnership:

- Ongoing multidisciplinary partnership supported by the University of Minnesota Provost's Office, Center for Urban and Regional Affairs, and philanthropy
- Leverages unique de-identified data integration capabilities of Minn-Link at the Center for Advanced Studies in Child Welfare
- Analyzing cross-sector impacts of Homework Starts with Home interventions to inform future policy and practice
- Documents stabilized housing, attendance, and school mobility and decreased use of homelessness interventions including shelters.

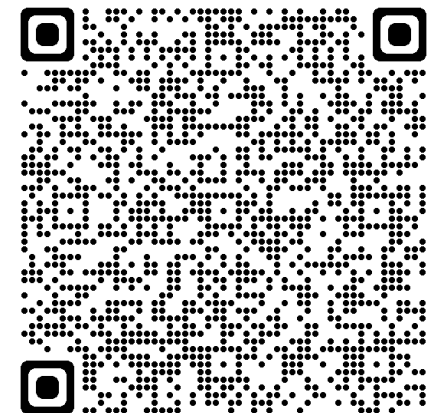
Research conference, findings, and supplemental material:

<https://innovation.umn.edu/ending-student-homelessness/the-homework-starts-with-home-research-partnership-team/>

Governor's budget proposal for Homework Starts with Home

- Expansion from \$1.75 million per year base budget to \$10 million per year.
- Expansion in eligibility to include prenatal and early childhood periods.
 - *Expanded eligibility would mean that any expecting family or family with children of any age through grade 12 would be eligible.*
- Proposal would reach an additional 1,425 families each year.

- The Walz-Flanagan Budget to Move Minnesota Forward prioritizes investments in housing stability. This includes:
 - 35 proposals from six State agencies
 - 19 new programs and budget line items
 - Over \$1 billion in proposed spending over the next three State fiscal years
- Full summary of the Housing Stability package:
<https://headinghomealliance.com/wp-content/uploads/2022/01/Move-Minnesota-Forward-Housing-Stability-budget-January-2022.pdf>



Thank you!