

# Metropolitan Council

State and Local Government Finance and Policy



January 2022

Chair Charlie Zelle





# Contents

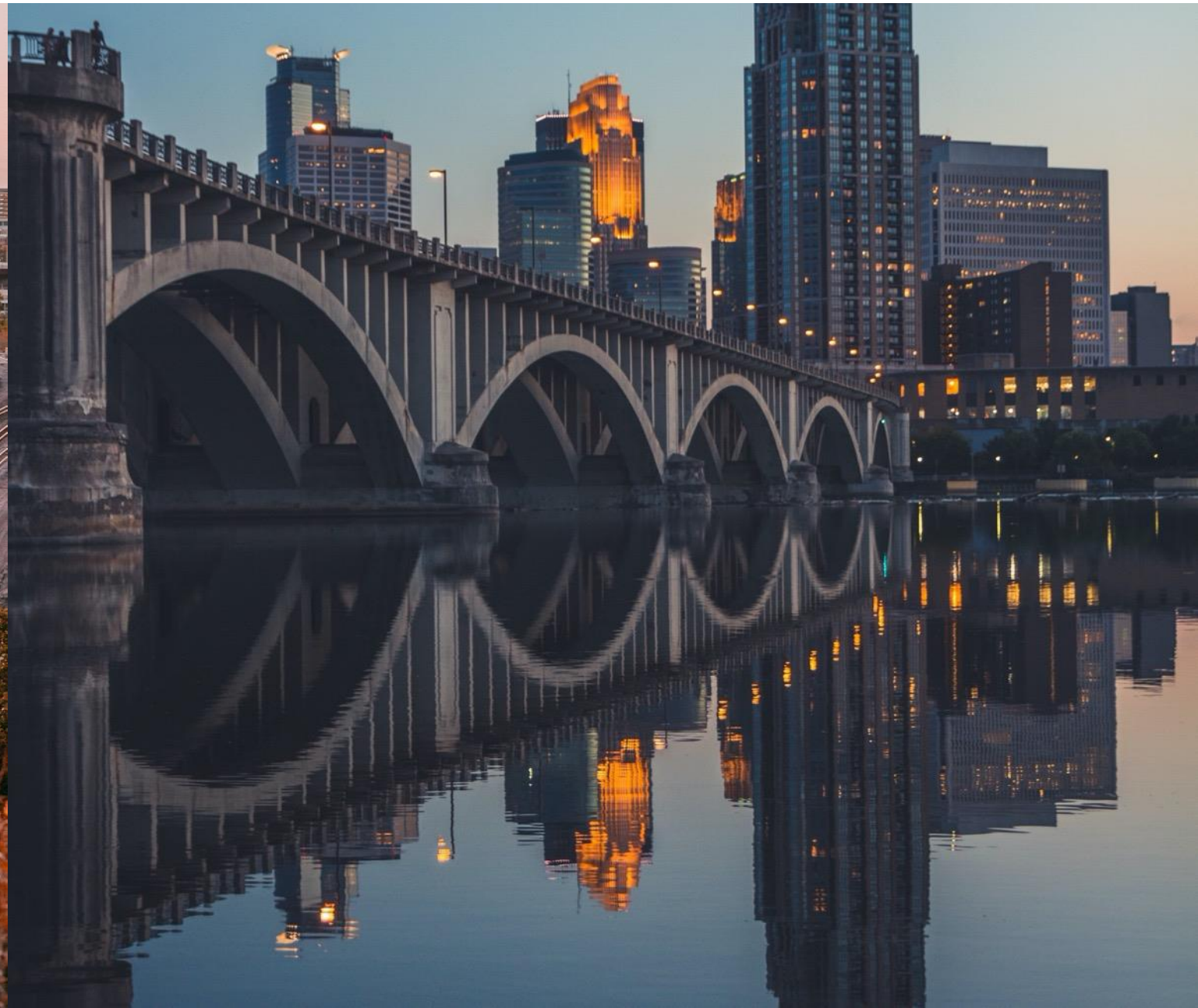
Our impact	2
Jurisdiction and governance	4
Agency structure and domains	6
Community Development	9
Environmental Services	11
Transportation	14



Metropolitan Council

# Our impact

Creating the foundation for a thriving region

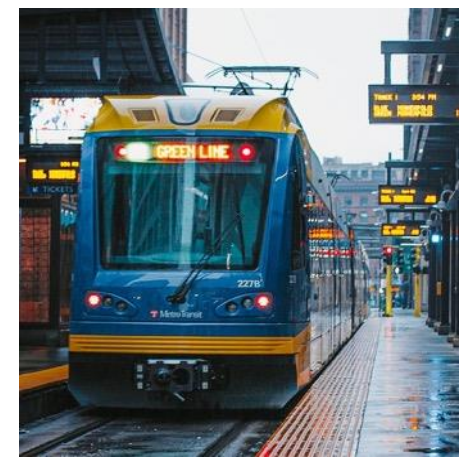
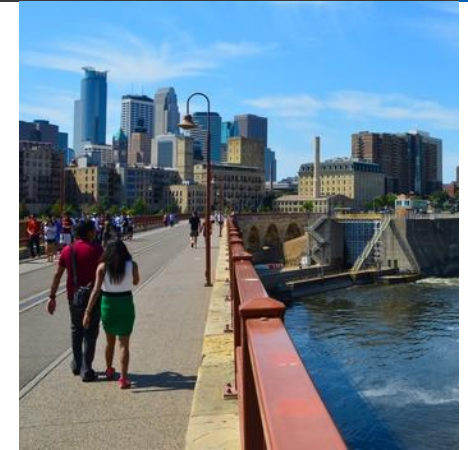




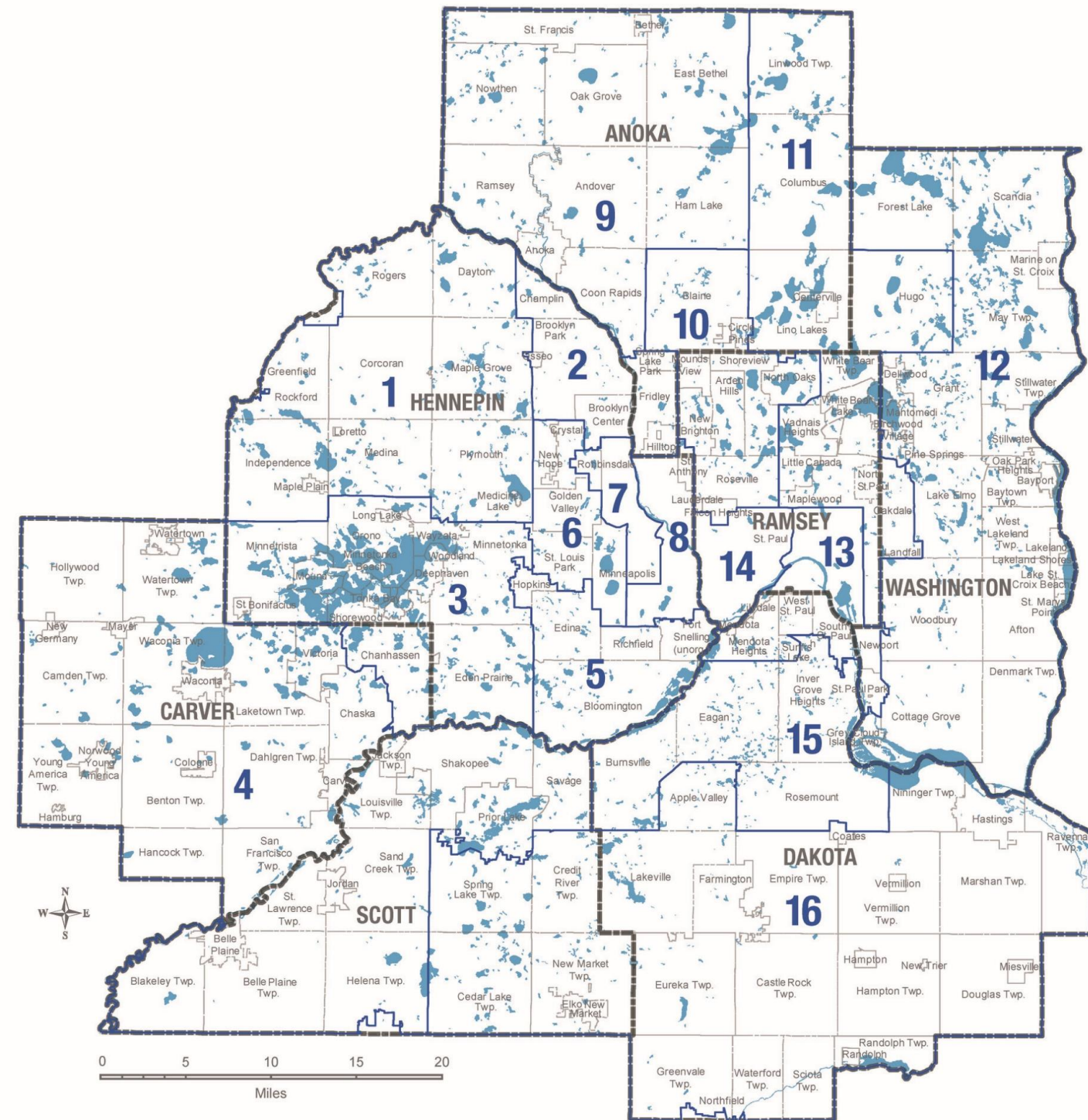
# No one community can do it alone

**Every single person and community makes up the fabric and essence of this region.**

- 7 counties
- 181 cities and townships
- More than 3 million residents
- Native people from 11 federally recognized Minnesota tribes and many other tribal communities
- Growing diversity representing wide-ranging racial and ethnic people, with about 300 languages spoken at home



# Jurisdiction and governance



- Metropolitan Council District Boundaries 1-16
- County Boundaries
- City & Township Boundaries
- Lakes & Rivers



# Appointing Metropolitan Council members

## Process

- **Nominating Committee**  
local government,  
community partners
  - **MN Statute 473.123**  
**Subd. 3(c)**
- Public interviews
- **Nominating Committee**  
recommends to Governor
- **Governor** appoints





# Agency structure and domains



# Partnering on a shared vision

Making a strong system possible through planning, coordination, and operations



## Long-range planning

Supporting cities and townships for the prosperity of the region



## Environmental protection

Protecting public waterways and parklands to sustain our environment



## Transportation services

Connecting people to places and keeping the economy moving



# Metropolitan Council

## Community Development

Housing, Development, and Contamination Clean Up Grants  
MN 473.25-255

Regional Land Use Planning  
MN 473.145, 473.851-867

Housing Services  
MN 473.195

Regional Parks and Open Space planning and funding: MN 473.301-351

## Environmental Services

Wastewater  
MN 473.511

Surface Water Quality  
MN 473.157

Water Supply Planning  
MN 473.1565

## Transportation

Regional Transportation Planning  
MN 473.146

Transitway Development  
MN 473.399

Transit Services  
MN 473.385



# Community Development

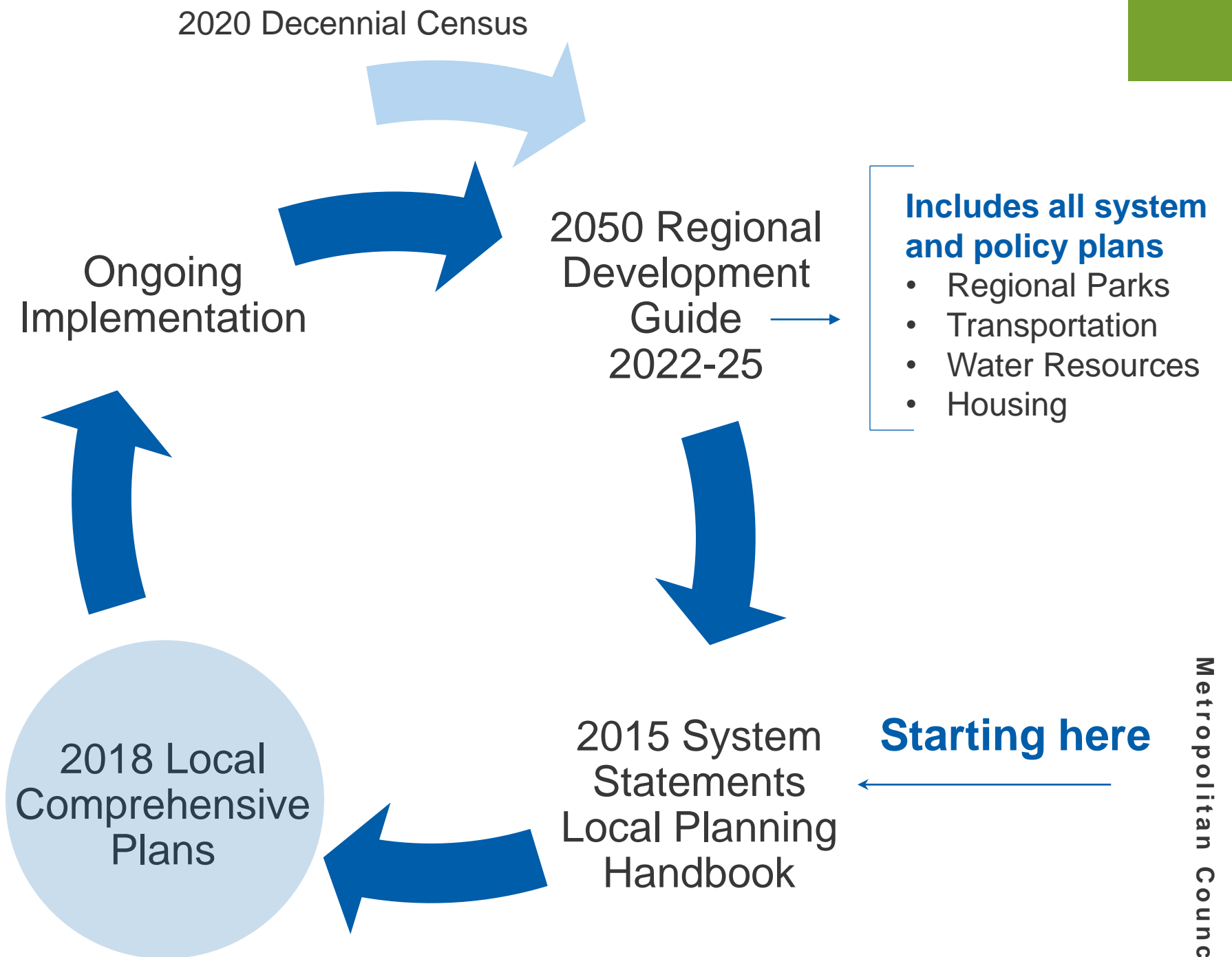


## Purpose

- **Administer Land Planning Act**  
(MN Statute 473.851)
- **Prepare Regional Development Guide**  
(MN Statute 473.145)
- **Implement Livable Communities Act**  
(MN Statute 473.25)
- **Deliver Rental Assistance**  
(MN Statute 473.195)
- **Guide Regional Parks & Open Space System**  
(MN Statute 473.301)
- **Conduct Research to Support Policy Making**  
(MN Statute 473.242)



# Regional planning cycle





# Environmental Services



## Key roles

- Provide cost-effective and resilient regional wastewater collection and treatment
- Support regional coordination for watershed organizations, communities, and water suppliers
- Carries out water supply planning activities required under Minn. Stat. 473.1565 and 473.157

## Statutory authority

**1972** – Clean Water Act

**1982** – Metropolitan Surface Water Management

**1995** – Metropolitan Land Planning Act



# Wastewater system

## Who

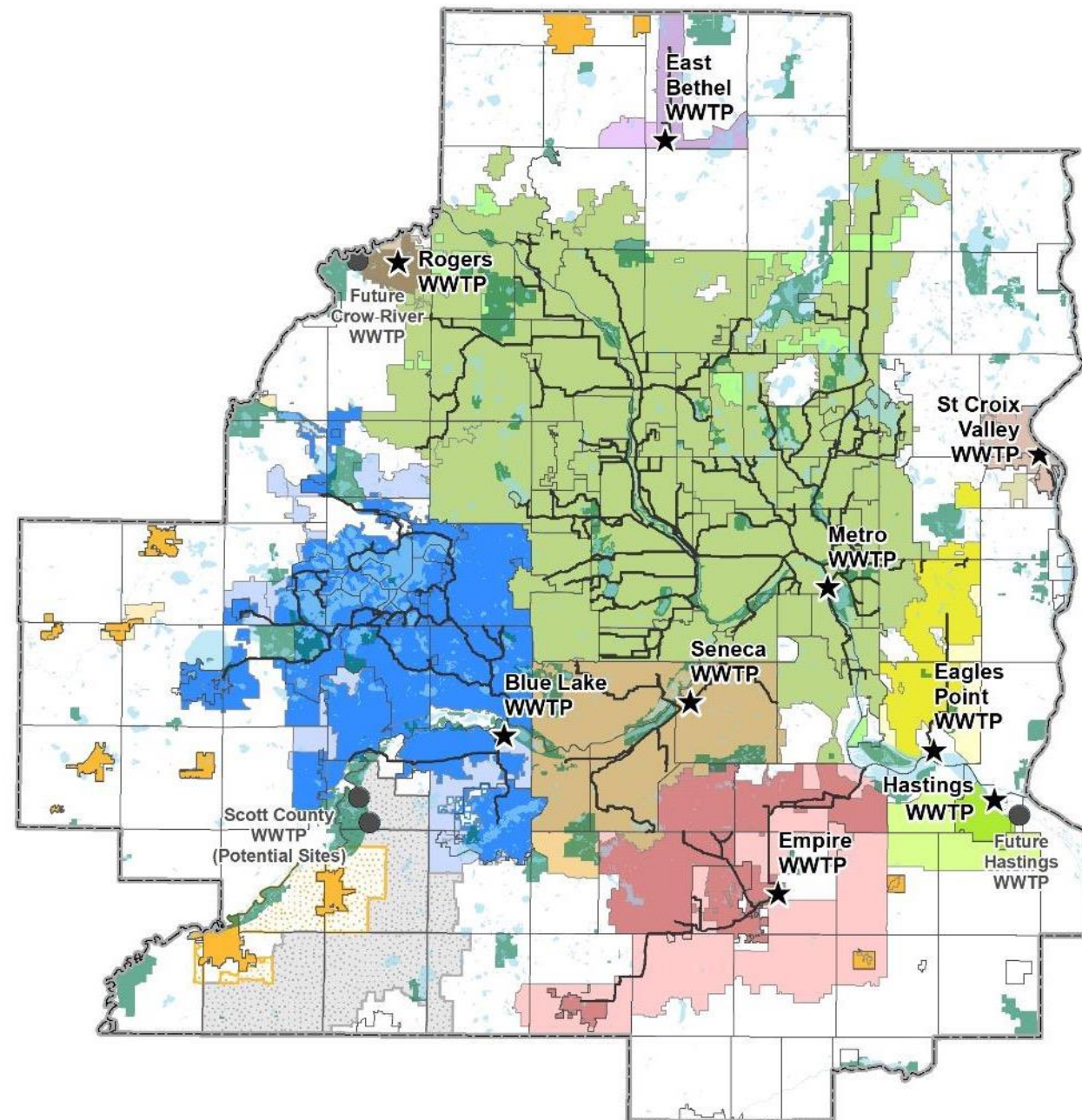
- 7-county Twin Cities Metro Area
- 111 communities
- 2,700,000+ people

## Our facilities

- 9 wastewater treatment plants
- 60 pump or lift stations
- 637 miles of interceptors
- 250 million gallons per day (avg)

## Our organization

- 600+ employees
- \$7 billion in valued assets
- \$150 million/year capital program





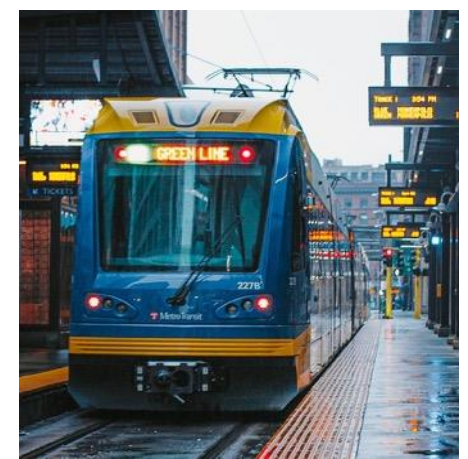
# Water supply planning

## Minnesota Statute 473.4565

- “Carry out planning activities addressing the water supply needs of the metropolitan area.”
- **Metro Area Water Supply Advisory Committee**
  - Counties
  - Municipalities/utilities
  - State agencies
  - Assists and guides Council water supply planning
  - Approves Master Water Supply Plan
  - Collaborates with a Technical Advisory Committee

**The Metropolitan Council is not a water supplier.**

**The regional planning process has been designed and applied to ensure local water suppliers have control of and responsibility for their water supply systems.**



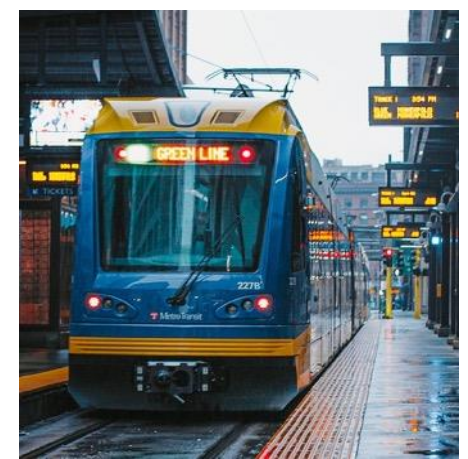
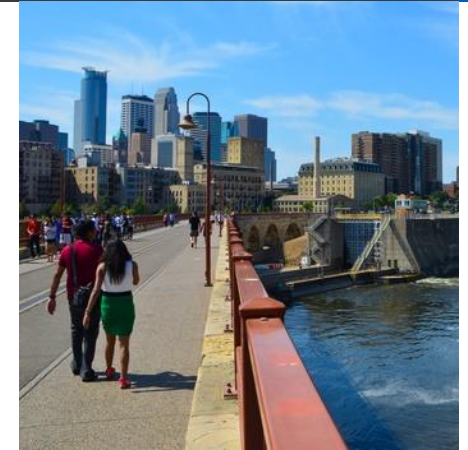
# Transportation

## Planning

- Designated as the region's Metropolitan Planning Organization
- Long-range transportation planning and shorter-term federal funds programming
  - Highway Planning
  - Transit Planning
  - Airport Planning
  - Freight Planning
  - Travel Forecasting
  - Corridor Studies
- Shorter term federal transportation funds programming

## Transit operations

- Provide, contract for, and coordinate metropolitan transit operations
- Provide financial assistance to local transit providers





# Regional transit services

## Metro Transit

- Bus regular route
- METRO Blue Line and Green Line light rail
- METRO Red Line and Orange Line bus rapid transit
- METRO A, C, and D Lines arterial bus rapid transit
- Northstar commuter rail

## Contracted services

- Metro Mobility
- Bus regular route
- Transit Link dial-a-ride
- Metro Vanpool
- Regional support and rideshare services

## Other regional providers

- Minnesota Valley Transit Authority
- SouthWest Transit
- Maple Grove Transit
- Plymouth Metrolink
- University of Minnesota

# Transportation Advisory Board



## 34-member board

- 18 elected officials
  - 10 elected officials appointed by Metro Cities
  - 7 county board members
  - 1 Suburban Transit Association
- 4 agency members
  - Met Council, MnDOT, MPCA, MAC,
- 8 citizen members from each Met Council district
- 4 transportation mode members
  - 2 transit, 1 freight, 1 non-motorized

**State Statute 473.146**  
**Subd. 4. Transportation planning**





**Charlie Zelle**

Metropolitan Council Chair

[charles.zelle@metc.state.mn.us](mailto:charles.zelle@metc.state.mn.us)

