



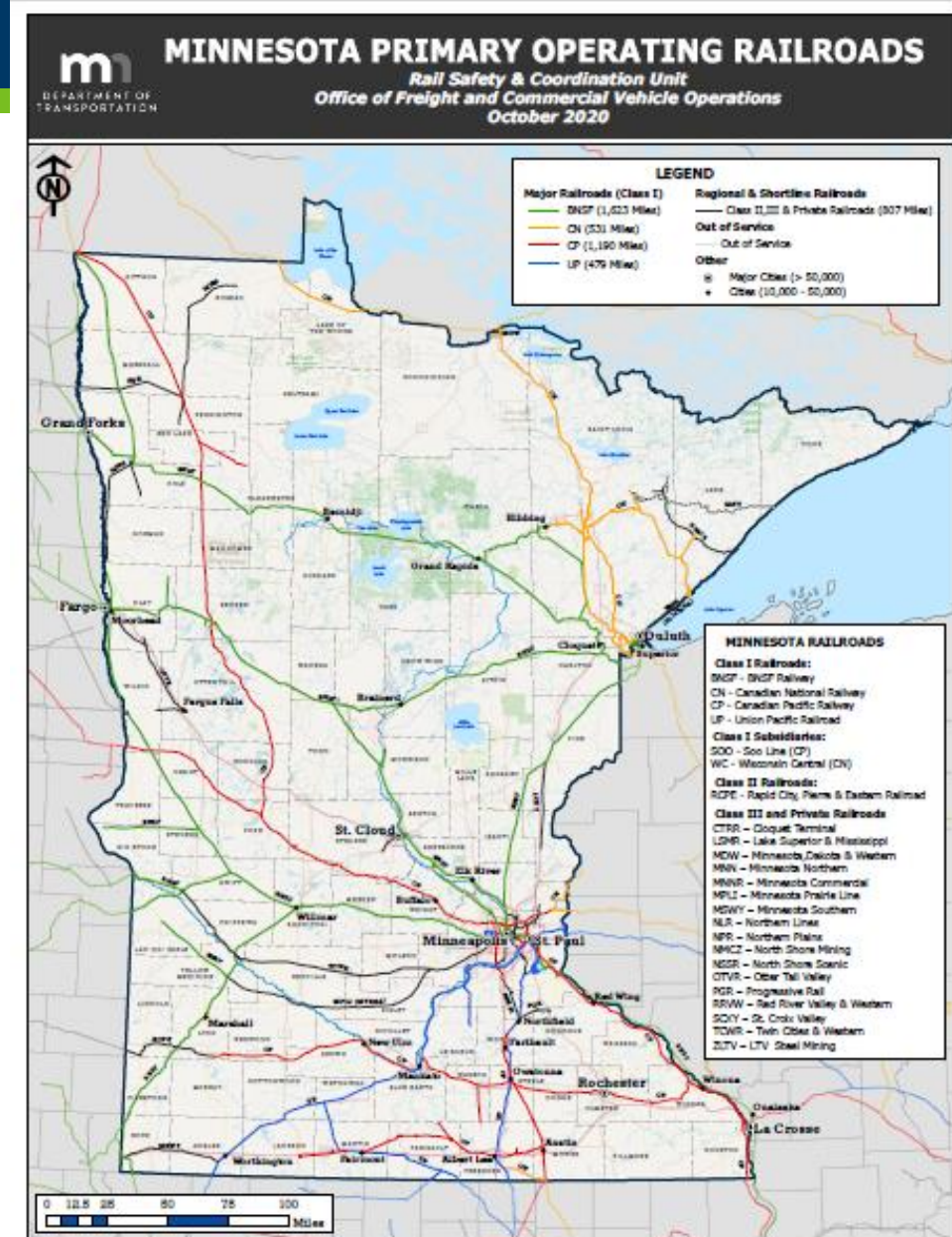
**February 23, 2021**  
**House Capital Investment Committee**

# Freight Rail and Ports Update

Bill Gardner | Director, Office of Freight & Commercial Vehicle Operations

# Minnesota's Freight Rail System

- 4 Class I railroads (BNSF, Canadian Pacific, Union Pacific, Canadian National)
- 16 regional & shortline railroads
- 4,300 route miles (8<sup>th</sup> in U.S.)
- ~25% of total freight tonnage in MN
- 1.9M rail carloads/year originate/terminate in MN
- Major commodities: iron ore/taconite, grain, coal, food products, non-metallic minerals, chemicals, other



# MN Rail Service Improvement Program

- Established in 1976 (MN Stat. 222)
- Purpose: Enhance and improve rail shipping; support economic development
- Provides grants to (shortline) railroads and for rail shippers to improve rail infrastructure
- Examples: track upgrades, bridge reconstruction, rail spurs

**2020 Appropriation: \$4M**

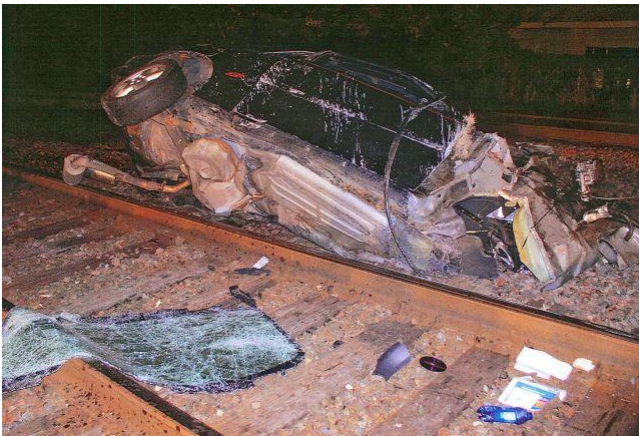


# Rail Grade Crossing Safety Improvement Program

- 4100 crossings of public roads in Minnesota
- Risk factors: sightlines, geometrics, roadway and train volumes
- Improvements: install gate/signal systems, replace older systems, close crossings, grade separate
- Other strategies: enforcement, education

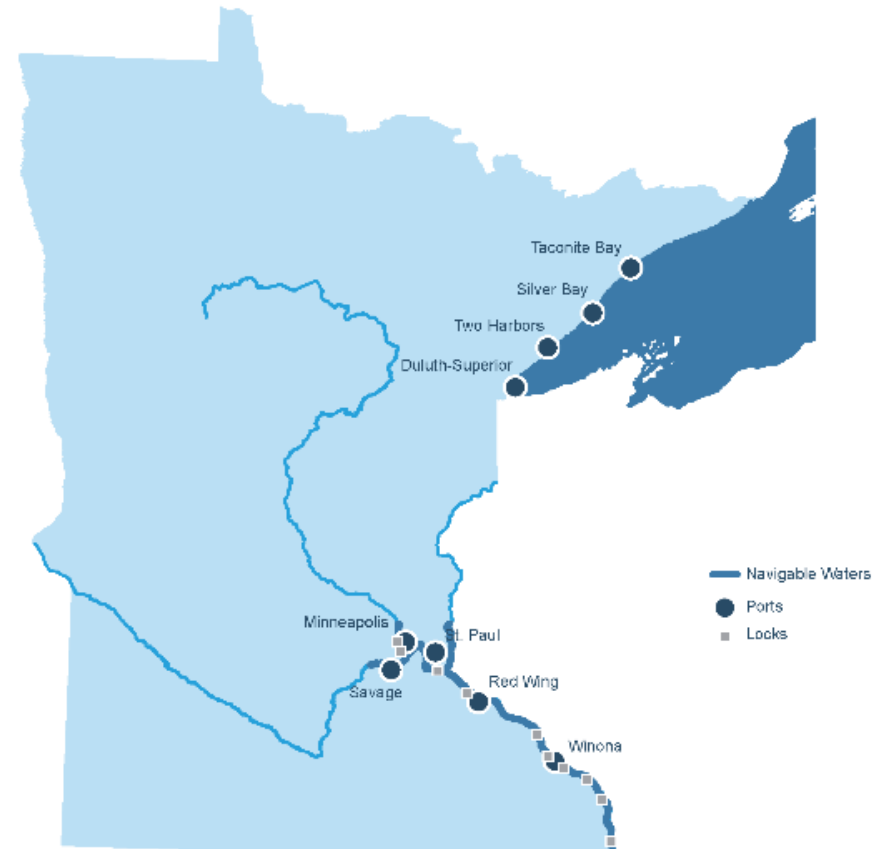
## 2020 Appropriation:

- **\$110M** for grade separations (Moorhead and Anoka)



# Minnesota Ports and Waterways

## WATERWAY SYSTEMS



# Minnesota Ports & Waterway Products

## Mississippi River

**To MN:** fertilizer, cement, salt, steel, aggregates

**From MN:** grain, petroleum coke, scrap metal, potash



## Great Lakes

**To MN:** limestone, salt, cement, lumber, bulk paper, steel, heavy machinery

**From MN:** taconite, coal, grain



# MN Port Development Assistance Program

- Established in 1994 (MN Stat. 457A)
- Purpose: Expedite movement of commodities and passengers; promote economic development in and around MN ports and harbors
- Grants (80%) to public ports to improve infrastructure
- Examples: road and rail access, terminal upgrades, dock wall reconstruction, limited dredging
- **2020 Appropriation: \$14M**

