

# Metropolitan Airports Commission: COVID-19 Impacts & Recovery



Brian Ryks, CEO  
Metropolitan Airports Commission

1

# Impacts on Travel



# COVID-19 – Industry Impact

- U.S. airport losses = \$23 billion  
March 2020- March 2021
- Newest Projections -  
\$17 billion in losses - April 2021 – April 2022
  - \$11.4 billion – lost airport revenue
  - \$3.5 billion – additional operational costs
  - \$1.6 billion – lost PFC revenues
  - \$500 million – lost customer facility charges

Source: ACI-NA



# COVID-19 Travel Impact



# COVID-19 Travel Impact



Screened  
Passenger levels  
dropped 95% -  
less than 2,000  
per day



Airlines cut 105  
routes from  
200+



Daily operations  
declined from  
1,200 to less than  
400



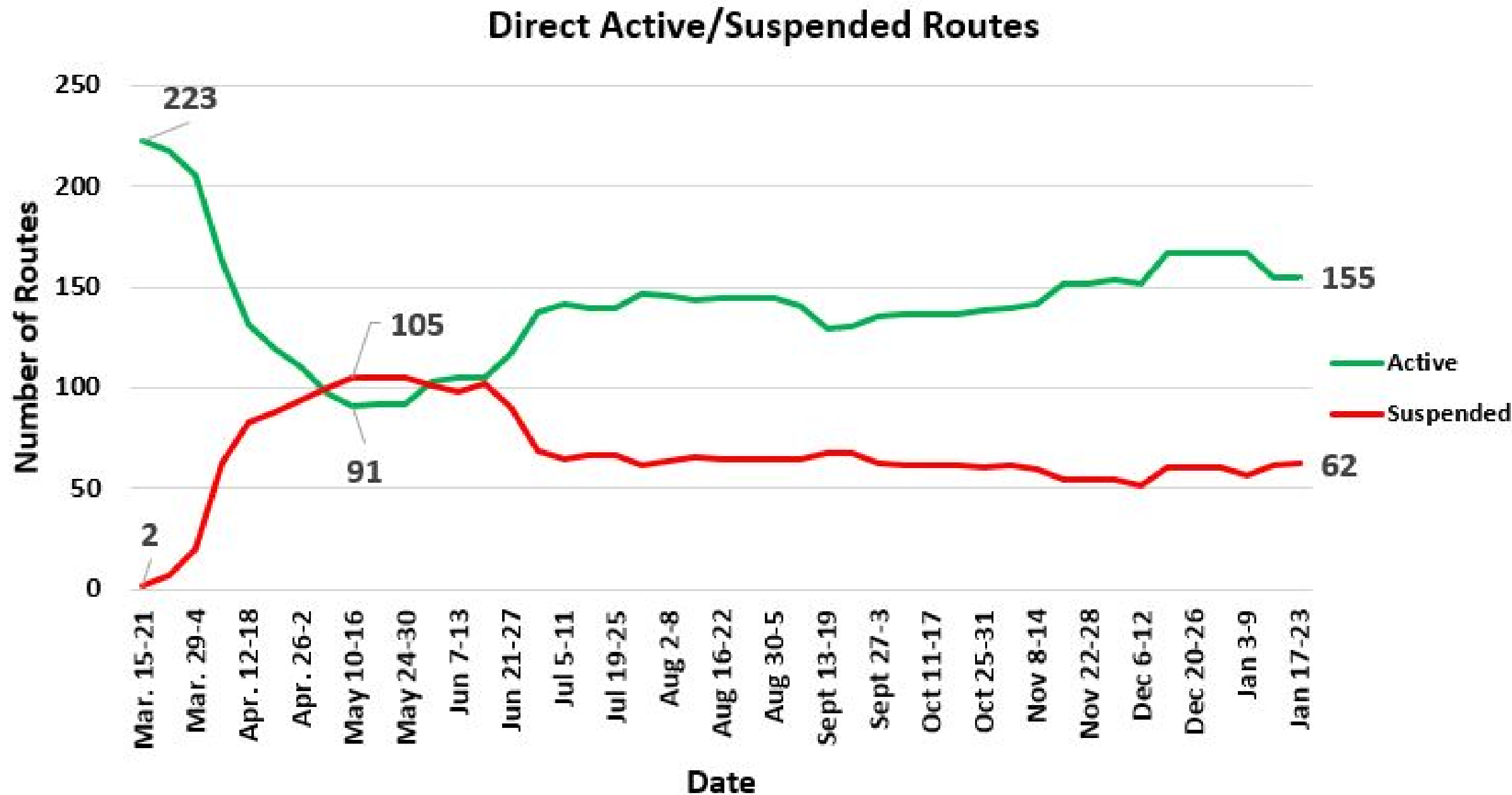
Airlines cut  
more than 1.5  
million seats/  
month

2

# A Slow Recovery

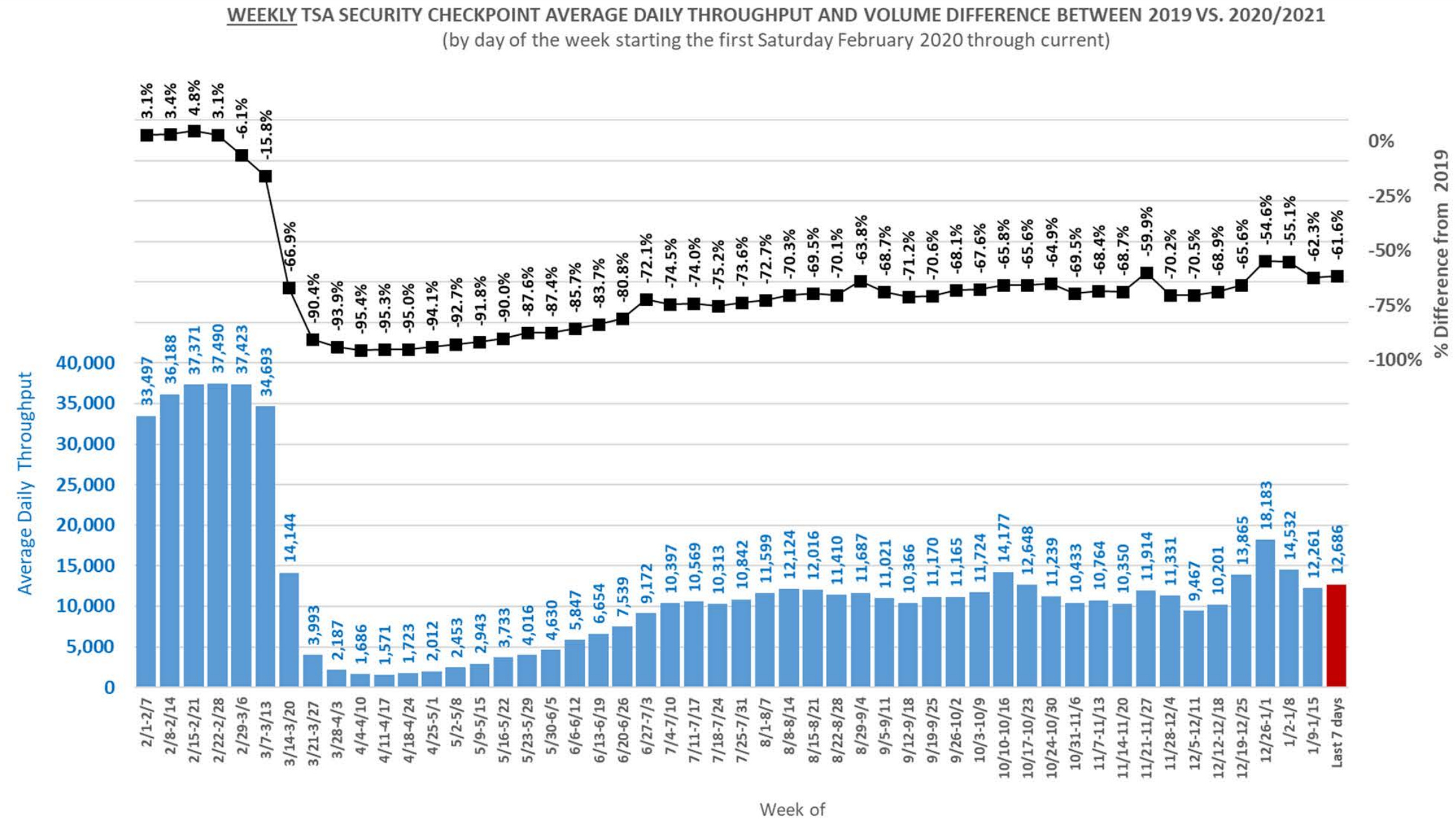


# Slow recovery in routes served



# COVID-19 Travel Impact

## PASSENGERS ACTIVITY THROUGH MSP CHECKPOINTS SINCE FEBRUARY 2020





## Less Travel, Less Revenue

- Nearly half MSP's 135 food, retail and service concessions remain closed
- Typically, only 3000 to 5,000 of MSP's 28,000 vehicle parking spaces is occupied by a traveler
- While still awaiting final numbers, estimate 2020 revenues will fall below budget by \$194 million
- When you add to that a \$51 million decline in passenger facility charges, the MAC is estimated to have taken in about \$245 million less than budgeted expectations in 2020
- Federal relief offset only a portion of that loss, and the industry is not expected to fully recover for years, leading to continued constrained revenues for the foreseeable future

3

# Health Safety Program



# Playbook

- Guidelines for MSP airport community
- Ensure safety of customers and employees
- Best practices from health agencies and aviation industry
- Consistent and trusted experience for all



## TRAVEL CONFIDENTLY PLAYBOOK

A comprehensive guide for COVID-19  
pandemic response and recovery.



# Travel Confidently Program



Robust Cleaning



Hand Sanitizing



Face Covering



Social Distancing



Shields



Touchless Parking

# Traveler Care Packages





## Accreditations for Best-in-Class Cleaning/Infectious Disease Prevention

### GBAC Star Program:

- Developed by American Association of Airport Executives in partnership with the Global Bio-risk Advisory Council
- Recognizes airports maintaining a standard that minimizes risk from coronavirus and other infectious agents

### Airport Health Accreditation Program:

- Developed by Airports Council International
- Assesses how MSP health measures align with ICAO Council Aviation Restart Task Force recommendations
- Focuses on best practices in the areas of cleaning and disinfection, physical distancing, staff protection, physical layout, passenger communications and passenger facilities

# Monitor and Adapt

- Pandemic is far from over
- Monitor recommendations from state and federal health agencies
- Review and adopt best practices in our industry
- Technology and innovation
- Safer journey





4

# The Importance of Recovery

**\$15.9 Billion**  
Total Economic Output



**\$7.1 Billion**  
Direct Economic Impact



**86,900**  
Jobs



**\$3.7 Billion**  
Employee Earnings



**\$973 Million**  
Taxes generated for  
local, state and federal  
programs



**\$2.5 Billion**  
Visitor Spending



## Reliever Airports:

- \$756 million in total economic output
- 1,030 direct jobs
- \$56 million in direct wages



# Thank you

[MetroAirports.org](https://MetroAirports.org) [MSPAirport.com](https://MSPAirport.com)



@mspairport