

BIOFUELS IN MINNESOTA: BY THE NUMBERS



Support the Better Fuel Initiative

Question: Would Minnesota be able to meet a 15% biofuel standard with existing production capacity?

Answer: Yes. Minnesota currently consumes 25% of ethanol produced in the state and exports 75%. Minnesota will be able to fully meet a 15% standard and still have excess ethanol to export.

Question: How much of the existing Minnesota-produced ethanol would be used in state if there was an increase in the standard? How much would that reduce our exported volumes of ethanol?

Answer: Minnesota currently produces an average of 1.27 billion gallons of ethanol per year. At a 15% consumption ratio, 400 million gallons or 31% of the state's ethanol production would be needed. Minnesota would then still be able to export 870 million gallons or 69% of its surplus production.

Question: Does Minnesota currently produce enough corn and/or have enough corn stocks to meet an increase in the ethanol standard?

Answer: Yes. Minnesota, on average from 2013-2018, exported 45% of its raw corn or about 594 million bushels. Minnesota also had an annual carryover of an additional 213 million bushels of corn crop dating from 2013-2018 that could be used in a value added market like ethanol.

2020 Minnesota Corn Production

- Acres Planted: 8 million
- Acres Harvested: 7.55 million
- Average Yield: 202 bushels per acre
- Total Production: 1.53 billion bushels

*One bushel = 56 lbs.

Minnesota Ethanol Infrastructure

- E15 stations: 370+
- E30 stations: 131
- E85 stations: 444

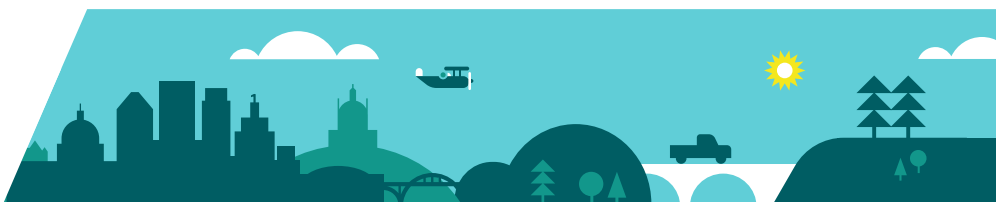
**MN leads the nation in number of stations for all three fuels*

2020 Minnesota Ethanol Production

- Corn Grind: 330 million bushels of corn processed (22% of total MN field corn crop)
- Ethanol Produced: 956 million gallons
- Dried Distillers Grains (DDGS) Produced: 2.6 million tons
- Corn Oil Produced: 238 million lbs.
- Minnesota Ethanol Fuel Blend Rate: 12.6% (MN leads the nation)

Minnesota Ethanol Sales Volume

- 2013 Minnesota Ethanol Sales:
 - E15: 42,000 gallons (First four E15 stations implemented)
 - E30: 193,000 gallons
 - E85: 13.1 million gallons
- 2020 Minnesota Ethanol Sales:
 - E15: 74.3 million gallons
 - E30: 458,350 gallons
 - E85: 11.4 million gallons



#BetterFuel4MN

For more information on the Better Fuel Initiative, visit BetterFuel.org or contact Amanda Bilek at abilek@mncorn.org.