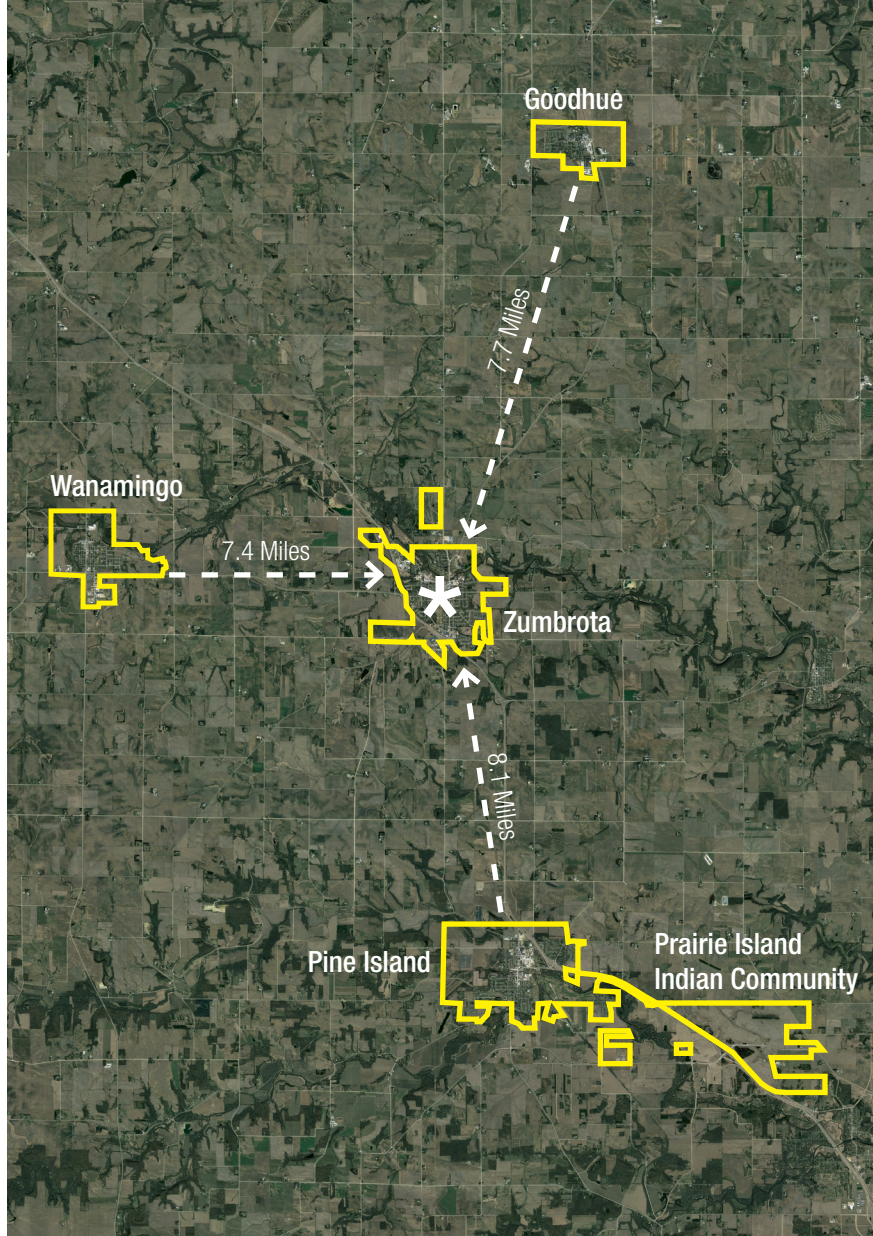


North Zumbro Sanitary District Proposed

Project Overview: Create a new regional sanitary district to serve the communities of Goodhue, Pine Island, Wanamingo, Zumbrota, and the Prairie Island Indian Community. A new wastewater facility will be built near the City of Zumbrota. Lift stations and piping will be installed primarily on MnDOT and county ROW to connect all communities.

The Need: Each community has aging facilities and is facing more restrictive permit discharge limits. Considerable investments will need to be made to address the issues at each facility.



This project could serve as a model for other state-wide collaborative efforts.



The Benefits:



Improve water quality in the Zumbro River



Increased performance & reliability



Increased flood protection for our facilities



Staff efficiency



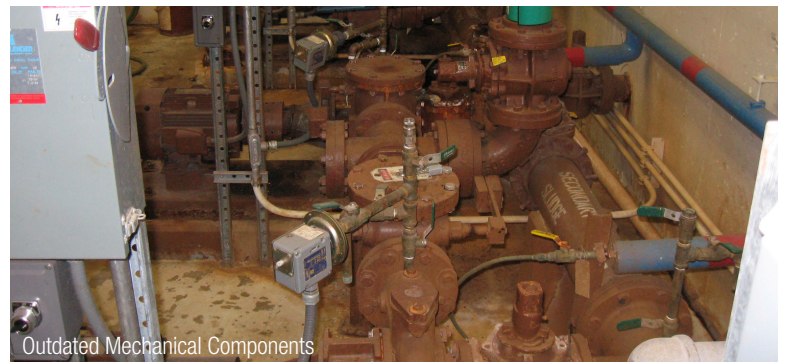
Lower cost per gallon for treatment



Reduced sampling & testing

Existing Facility Issues:

- Outdated facilities in each of our communities
- High operation and maintenance costs
- No economy of scale with individual facilities
- Lack of space to expand existing facilities
- Multiple points of discharge into the Zumbro River
- Limited growth potential in our communities
- Facilities located within flood plain



Project Costs:

\$817,126 Property Acquisition

\$544,750 Predesign Fees

\$6,809,380 Design Fees

\$5,447,504 Project Management

\$81,712,560 Construction

\$95,331,320 Total Project Cost



Bonding Bill: Each community lacks the ability to fund the project individually. The only feasible way to offer long-term wastewater treatment to the region is through access to State Bonding dollars.



A new sanitary district will benefit everyone in our communities.



Please support the North Zumbro Sanitary District.

This collaborative effort will be a model for other communities in the State of Minnesota, reduce costs for the communities involved, bring efficiency to performance and maintenance, and improve water quality in the Zumbro River.

