

# Parks and Trails Legacy Partner Agency Update

House Legacy Finance Committee • February 8, 2023



# Parks and Trails Legacy Partner Agencies



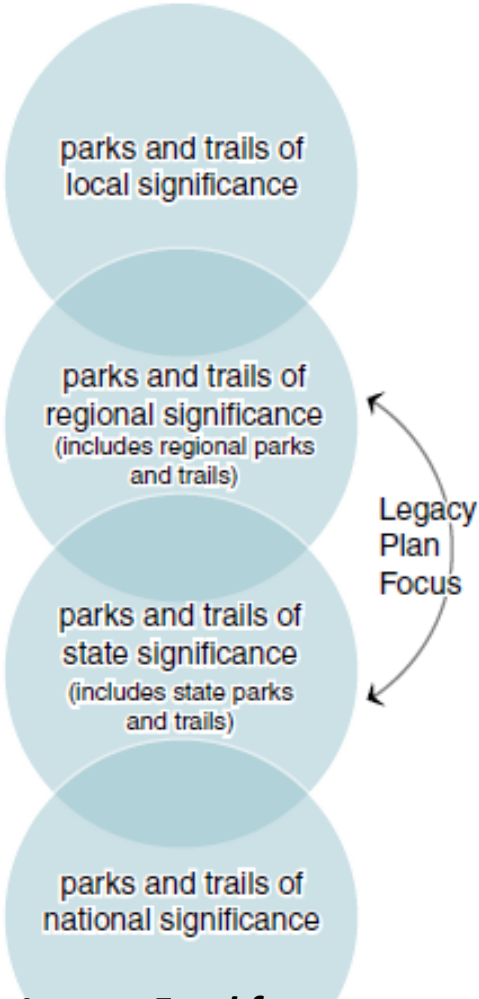
**Greater Minnesota Regional Parks and Trails Commission**



**Metropolitan Council  
Metropolitan Regional Parks and Trails**

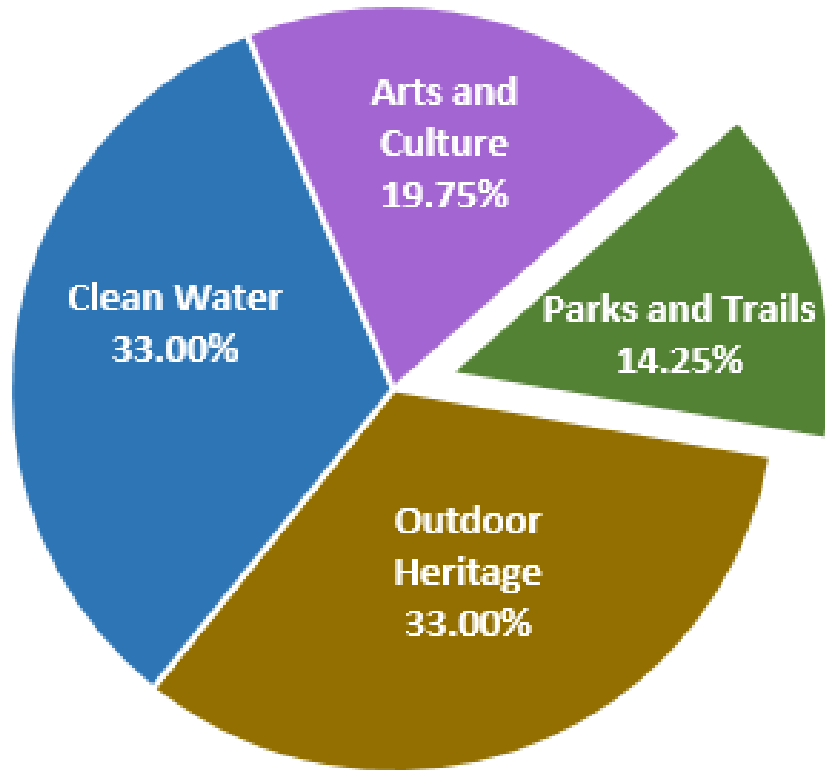


**Minnesota Department of Natural Resources  
Parks and Trails Division**



*The Parks and Trails Legacy Fund focuses on parks and trails of state and regional significance.*

# Parks and Trails Legacy Fund... one of four Legacy Funds



*Legacy Amendment revenue is distributed into four funds.*

Minnesota voters passed the Clean Water, Land and Legacy Amendment to the Minnesota Constitution in 2008. The Legacy Amendment is funded from a three-eighths of one percent increase to the state sales tax with revenue dedicated to:

1. protect, enhance, and restore water quality in lakes, rivers, and streams, groundwater from degradation, and to protect drinking water sources;
2. restore, protect, and enhance wetlands, prairies, forest and habitat for fish, game, and wildlife;
3. support arts, arts education and arts access, and to preserve Minnesota's history and cultural heritage;
4. **support parks and trails of regional or statewide significance.**

# Minnesota 25-Year Parks and Trails Legacy Plan

***VISION: In 2035, our world-class parks and trails connect everyone to the outdoors...***

- *Every Minnesotan has a strong connection to natural resource-based parks and trails throughout the state.*
- *Young people, families, and seniors are active outdoors and as a result are healthy.*
- *Minnesotans who have traditionally not participated as much at parks and trails are active outdoors and feel welcome.*



# Minnesota 25-Year Parks and Trails Legacy Plan

***PILLARS:** Strategic Priorities for the Parks and Trails Legacy Fund...*



**Connect People and the Outdoors**



**Acquire Land, Create Opportunities**



**Take Care of What We Have**



**Coordinate Among Partners**

# Engage Minnesotans in a Shared Outdoor Recreation Legacy

- **Parks and Trails Legacy Advisory Committee**
- **Advance joint projects with partners (user-friendly websites, trail projects, joint research, etc.)**
- **Welcoming and accessible parks and trails**



# Covid-19 Pandemic Impact

## Minnesotans value the outdoors and natural resources



Metropolitan Council

# Metropolitan Regional Park System

LisaBeth Barajas  
Executive Director  
Community Development

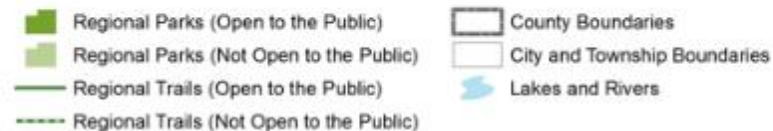
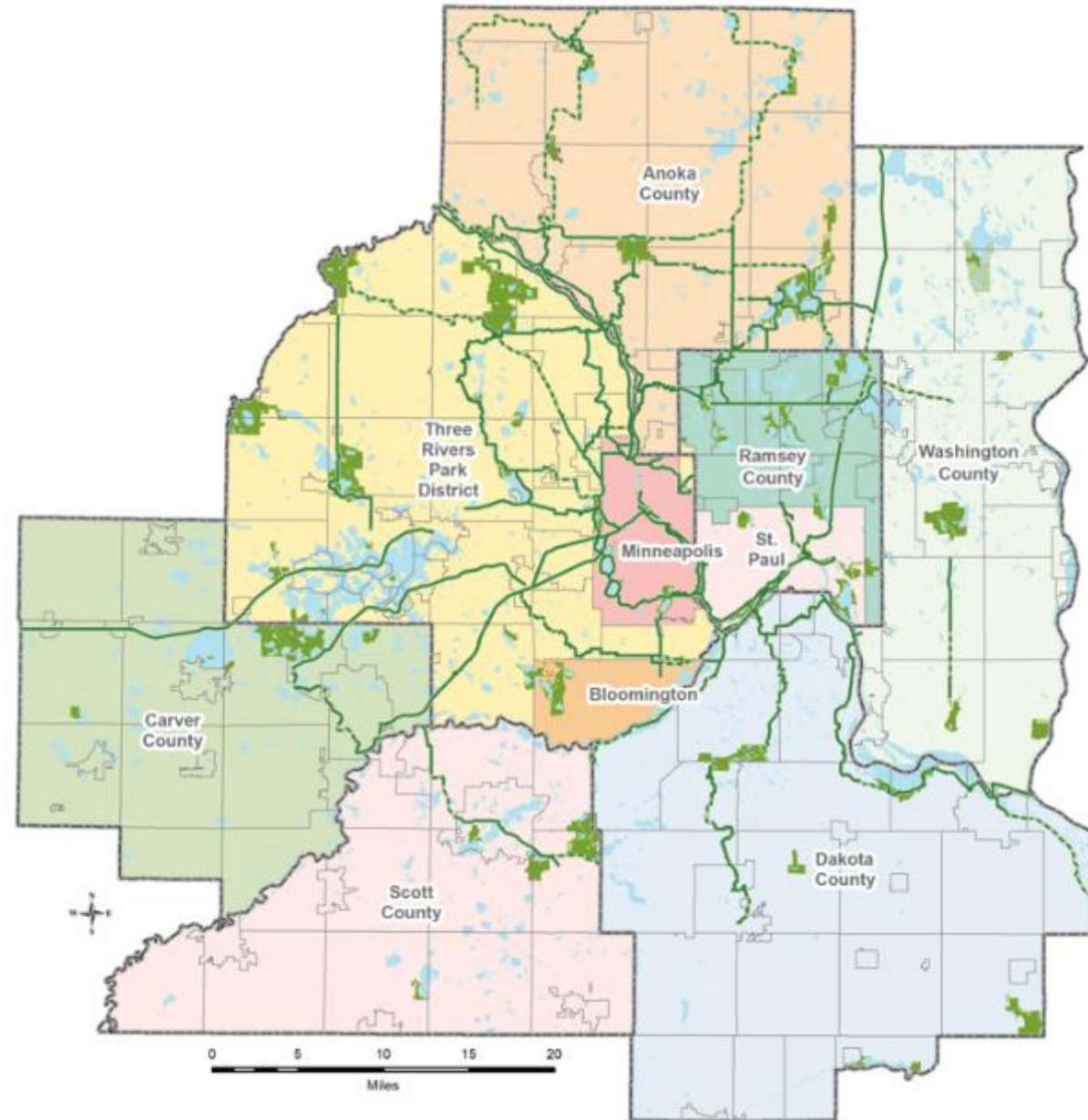




# Collaboration and cooperation

## 10 Regional Parks Implementing Agencies

- Anoka County
- Carver County
- Dakota County
- Ramsey County
- Scott County
- Washington County
- Bloomington
- Minneapolis Park & Recreation Board
- Saint Paul
- Three Rivers Park District



# Regional park system



**NATURE-BASED SYSTEM PROVIDES SIGNIFICANT GREENSPACE AND WILDLIFE HABITAT**



**8 SPECIAL RECREATION FEATURES** (LIKE COMO PARK ZOO & CONSERVATORY AND GALE WOODS FARM)



**56 REGIONAL PARKS AND PARK RESERVES**



**OVER 415 MILES OF INTERCONNECTED REGIONAL TRAILS**



**65 MILLION VISITS IN 2021**



**54,500 ACRES OF LAND**

# Parks & Trails Fund – Minnesota's Legacy



Como Regional Park, Saint Paul

## Distribution

State statute allocates funding for metropolitan regional parks into two areas

- 10 implementing agencies
  - 90% distributed non-competitively by legislative formula
  - 10% dedicated for land acquisition, distributed on a first-come-first-served basis.
    - Metropolitan Council matches acquisition funds \$2 for every \$3

# Parks & Trails Fund – Minnesota's Legacy

## Selection process

- Selected by each of the 10 locally elected boards or commissions
- Projects reviewed by Met Council
  - Consistency with park and trail plans
  - Proposed projects meet all state guidelines and requirements.



Schulze Lake, Lebanon Hills Regional Park, Dakota County

# Parks and Trails Legacy Plan

## Connecting People and the Outdoors

Creating welcoming introductory experiences



2023 Nordic Opener, Elm Creek Park Reserve Three Rivers Park District



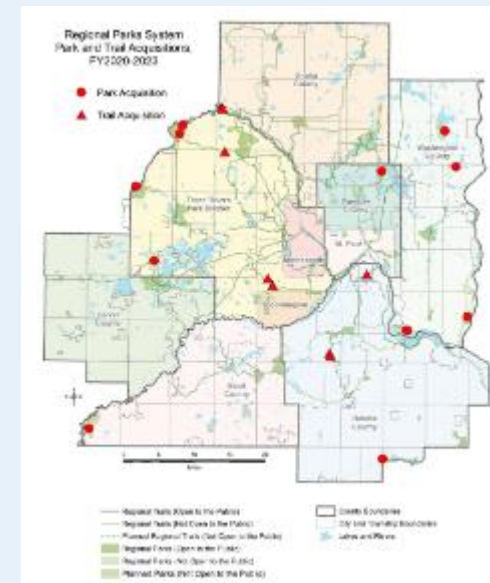
Mississippi Gateway Regional Park, Three Rivers Park District

## Acquiring Land

A critical resource for acquisitions throughout the Metro Area

**FY 2020-2022**

- Acres – 375 acquired
- Legacy Funds \$4.6 Million
- Council match \$3.2 Million
- Local match \$2.6 Million



# Parks and Trails Legacy Plan

## Creating Opportunities

A story of transformation



Indian Mounds Regional Park, Saint Paul

## Taking Care of What We Have

Creating inviting community assets



Ravine Landing Visitor Center, Cottage Grove Ravine Regional Park Washington County

# Parks and Trails Legacy Allocations

## FY2022 – 2025

Agency	FY22/23	FY24/25	Total
Anoka	\$ 3,627,217	\$ 4,305,589	\$ 7,932,806
Bloomington	\$ 698,738	\$ 829,417	\$ 1,528,155
Carver	\$ 869,179	\$ 1,031,735	\$ 1,900,914
Dakota	\$ 3,175,532	\$ 3,769,428	\$ 6,944,961
MPRB	\$ 9,416,222	\$ 11,177,269	\$ 20,593,492
Ramsey	\$ 3,430,503	\$ 4,072,085	\$ 7,502,589
Saint Paul	\$ 5,073,556	\$ 6,022,426	\$ 11,095,982
Scott	\$ 1,490,521	\$ 1,769,282	\$ 3,259,803
Three Rivers	\$ 9,606,859	\$ 11,403,559	\$ 21,010,417
Washington	\$ 2,086,573	\$ 2,476,809	\$ 4,563,381
PAOF Program 10%	\$ 4,386,100	\$ 5,206,400	\$ 9,592,500
<b>Total</b>	<b>\$ 43,861,000</b>	<b>\$ 52,064,000</b>	<b>\$ 95,925,000</b>

FY24/25 agency shares are estimated and subject to change based on updated inputs



**mn** MINNESOTA  
STATE PARKS AND TRAILS

## Parks and Trails Legacy Fund: DNR Overview

**Ann Pierce | Director, Division of Parks and Trails**



# Minnesota State Parks and Trails

## State Parks and Recreation Areas

- 75 State Parks and Recreation Areas
- Nearly 5,000 camping and lodging units
- 240,000 acres of land managed

## State and Grant-in-Aid (GIA) Trails

- 25 state trails
- 1,500 miles of developed state trails
- 3,600 miles of hiking, biking, horse, and motorized trails within state parks, state recreation areas, and state forests
- 24,600 miles of Grant-in-aid trails (snowmobile, OHV, and ski)

## State Forest Recreation Areas

- 43 state forest campgrounds
- 12 state forest horse campgrounds
- 29 forest day-use areas

## Water Recreation

- 35 state water trails
- 1,700 public water accesses
- 360 fishing piers



# Minnesota State Parks and Trails

## Connect People and the Outdoors

### Library Pass Program



**Minnesota State Parks Library Pass**

This pass provides access to over 100 miles of Minnesota state parks and recreation areas.

Please note: This pass is valid only in state parks and recreation areas.

Valid through the end of the season.

### Multi-Cultural Marketing

**m MINNESOTA STATE PARKS AND TRAILS**

**Trailblazer**

February 2021

I want all my senses engaged. Let me absorb the world's variety and uniqueness.

—Wayne Argeton

**Black History Makers**

We are celebrating Black History Month by honoring all past Black trailblazers and those making history now. Join us!

From a Wisconsin trailblazer, the Dakota Dakota Dakota Guide service man and the Black Trailblazer community in Minnesota County, to artists and leaders working on solutions, we share the stories of some of those leaving their marks in the outdoor recreation world.

Let's keep studying, learning and listening about Black history makers, beyond the words.

**Harriet Tubman, the Ultimate Outdoors Woman**

Did you know that Harriet Tubman was not only a woman of the environment and able to swim, hunt, and fish? An early trailblazer, Tubman relied on her knowledge of astronomy to assist herself while traveling, used outcrops as a signal and

**m MINNESOTA STATE PARKS AND TRAILS**

**Trailblazer**

November 2021

"Our relationship with land cannot be cut until we lose it forever."

—Robin Hood, Algonquian, quote from the 16th-century book, The First Americans

**Aanii, Targyoo Yahipi!**

November is National Native American Heritage Month. To celebrate, we give center stage to Indigenous people to share their stories in their own voices. With these stories, we are starting seeds so that you learn more about the land you play in, in a month and the rest of the year.

**OUT & ABOUT**

**Bradley Harrington, Angler and Leader Who Accepts Manitowag Gifts**

Nhi a'lee erishinabe aabajitood il'wa go-pi-miri'goowid il'riwe-lee-erishid.

Before joining us he worked with us. Then I learned why he chose to work for us. He is a man of many talents. He is a man of many talents. He is a man of many talents. He is a man of many talents.

### I Can!... Programs



# Minnesota State Parks and Trails

## Take Care of What We Have



**Temperance River State Park – New Shower Building**  
Park users expect clean, modern, family-friendly and climate-friendly facilities.

## Create Opportunities



**Glacial Lakes State Trail within Sibley State Park**  
Legacy funds provide supplemental funds to make safe, accessible and welcoming trail projects possible

# Minnesota State Parks and Trails

## Create Opportunities



**Shipwreck Creek Campground at Split Rock Light House State Park**  
*Opened June 1, 2022*



# DNR Parks and Trails Legacy Investment Process

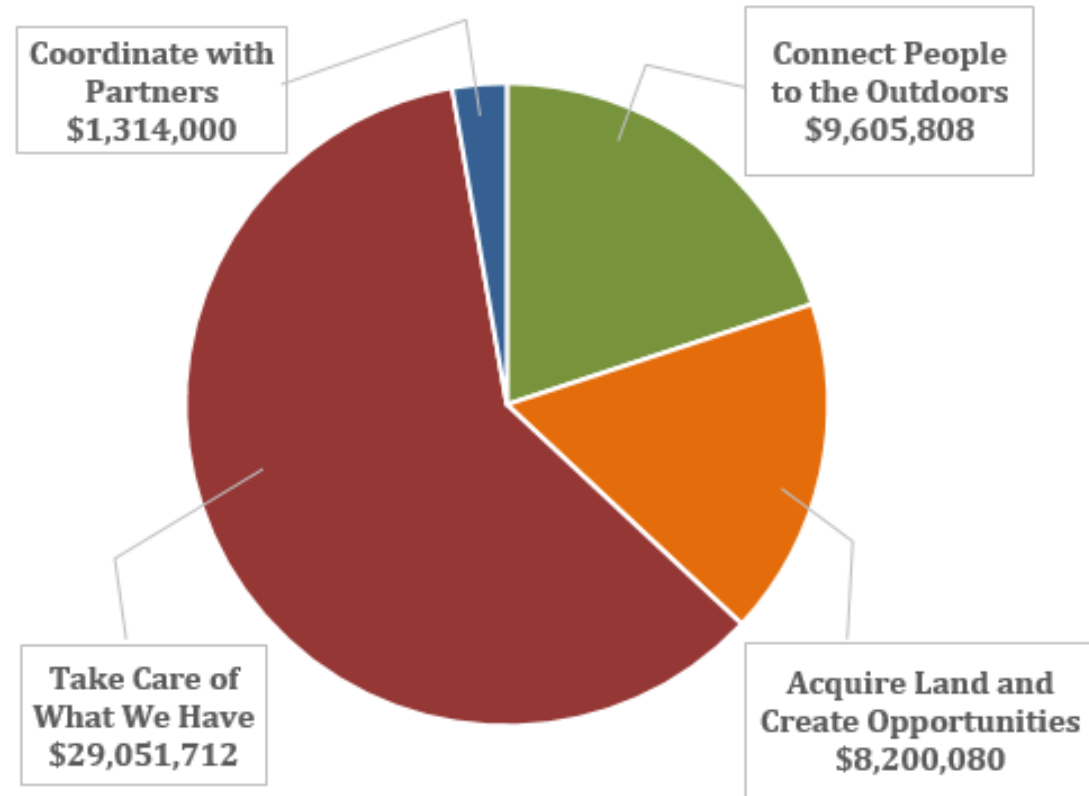


# FY24/25 DNR Parks and Trails Legacy Allocation

Legacy Pillar	FY24/25 Dollars	FY24/25 Percent	FY22/23 Dollars	FY22/23 Percent
Connect People to the Outdoors	\$9,605,808	20.50%	\$7,894,980	20.00%
Acquire Land and Create Opportunities	\$8,200,080	17.50%	\$7,894,980	20.00%
Take Care of What We Have	\$29,051,712	62.00%	\$23,684,940	60.00%
Total DNR Parks and Trails	\$46,857,600	100%	\$39,474,900	100%
Coordinate with Partners *	\$1,314,000	N/A	\$1,024,000	N/A

\* Funding for the **Coordinate with Partners** pillar is appropriated separately from the DNR Legacy budget.

### FY24/25 Legacy Pillar Allocation





# Greater Minnesota Regional Parks and Trails Commission

Renee Mattson  
Executive Director



# About the Commission

**6** Districts across 80-Counties

**13** Commissioners Appointed by the Governor  
2 in each District and 1 At-Large

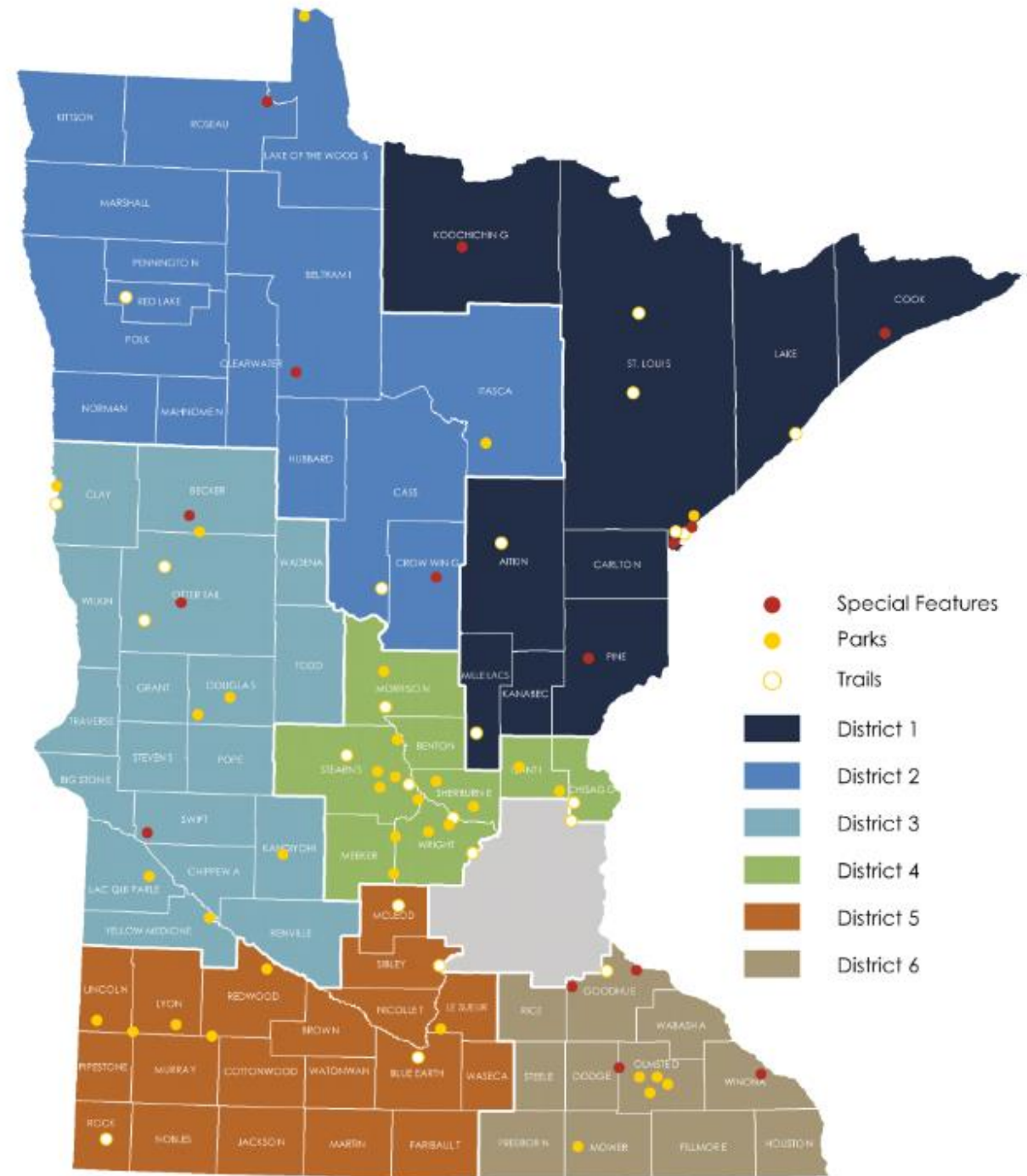
**74** Facilities

35 Natural Resource Based Parks

24 Regional Trails

15 Special Features

**20** Designation Eligible Facilities





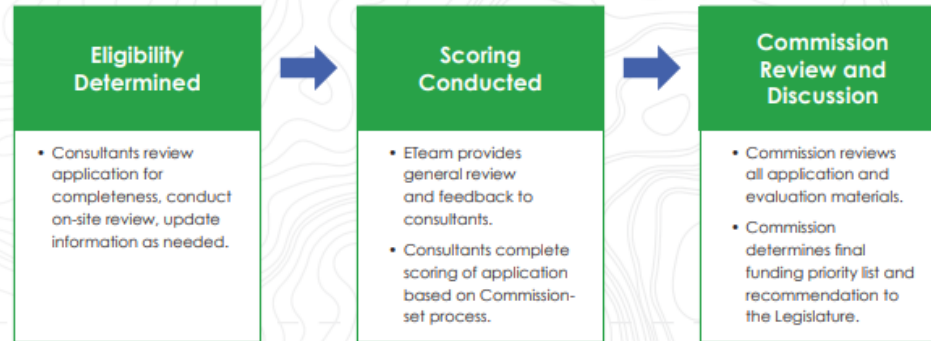
# How to Achieve Regionally Significant Designation



- Application reviewed by 5-member Evaluation Team and ranked High, Medium or Low. High ranked applications are invited to submit a qualified Master Plan
- Staff review plan for completeness and eligibility and conduct a site visit of the facility. Evaluation Team review of the Master Plan and criteria scoring. Commissioners review and deliberation for regional designation.
- Annual funding applications are submitted for regionally impactful components as described in the Master Plan. Staff conduct site visits and score applications based on established criteria. Commissioners review, comment and determine priority list.

# Grant Funding Selection Process

## FUNDING RECOMMENDATION SELECTION PROCESS



### SCORING CRITERIA

Park Criteria	Trail Criteria	Connecting People to the Outdoors Criteria
Completes a regionally substantial component in the applicants Master Plan.	Completes a regionally substantial component in the applicants Master Plan.	Supports the programming and marketing components in the applicants Master Plan.
Fills a gap and provides an outdoor recreation benefit of regional significance for that district.	Fills a gap and provides connectivity to users. Could also provide connectivity to a larger trail system to create a recreation benefit for the district.	Fills a gap and provides a proven outdoor recreation benefit of regional significance for that district.
Is significantly linked to one or more of the four pillars in the 25-Year Legacy Plan.	Is significantly linked to one or more of the four pillars in the 25-Year Legacy Plan.	Is significantly linked to the Connecting People to the Outdoors pillar objectives as well as additional pillars in the 25-Year Legacy Plan.
Project is a critical acquisition or critical rehabilitation and repair of a park facility or feature.	Project is a critical acquisition or critical rehabilitation and repair of a trail, trailhead facility or trail feature.	Provides significant and locally sustainable recruitment, retention or reactivation of outdoor recreation participation.
Provides access to quality natural and cultural resources within the district.	Provides access to quality natural and cultural resources within the district.	Provides access for underserved populations to quality natural and cultural resources within the district.
Has a financial match. A higher match will receive greater point awards.	Has a financial match. A higher match will receive greater point awards.	Has a financial match. A higher match will receive greater point awards.
Includes a fully detailed budget and implementation plan.	Includes a fully detailed budget and implementation plan.	Includes a fully detailed budget and implementation plan.



# FY24 LEGACY FUNDING RECOMMENDATIONS

PROJECT	AWARD	DIST.
<b>Duluth Waabizheshikana/The Marten Trail</b> A ten mile trail tracing the shoreline of the St. Louis River Estuary, recently restored from a highly degraded state.	\$1,493,434	1
<b>Cook County Mountain Bike Trail System</b> Development of a bicycle skills park at the Cook County Community Center and the rehabilitation of 4.9 miles of the High Climber mountain bike trail.	\$400,000	1
<b>Mesabi Trail</b> Construction of the FINAL 2.4 miles of trail from the West Two River to connect to the existing Mesabi Trail in Tower.	\$750,000	1
<b>Northerly Park - Northwest Angle</b> Master Plan Update	\$70,000	2
<b>Detroit Mountain Recreation Area</b> Land acquisition for an accessible trail loop, sculptures, additional single track biking trail and a natural play area Tree House element.	\$1,325,941	3
<b>Offer Tail County Phelps Mill County Park</b> 1,400 feet of wetland boardwalks and viewing platforms within a restored wetlands area.	\$366,000	3
<b>Benton County Great River Park Complex</b> Large picnic shelter and overflow parking, canoe landing improvements, nature play area relocation, additional natural surface trails, wayfinding and interpretive signage.	\$797,555	4
<b>Isanti County Springvale Park</b> Accessible nature play area, a three mile single track mountain bike expansion, repaving and enlarging the main parking area, a vault toilet and trailhead and wayfinding signage throughout the park.	\$336,800	4
<b>Stearns County Kraemer Lake - Wildwood County Park</b> Enhanced park entry road, parking lot, picnic areas and picnic shelters, restrooms, fishing pier, nature based playground, non-motorized boat launch and paved trail access to amenities.	\$1,175,846	4
<b>Stearns County Quarry Park &amp; Nature Preserve</b> Erosion control at Quarry 2.	\$170,250	4
<b>Redwood County Plum Creek Park</b> Improved parking lot, beach enhancement through new retaining walls and natural playground near the beach. Also included is a new bathroom and changing room and a new ADA sidewalk.	\$818,539	5
<b>Sibley County Henderson Scenic Byway Regional Trail</b> Hummingbird Regional Trail construction done concurrently with the reconstruction of CSAH 6 between Henderson and Blakeley.	\$1,394,400	5
<b>Austin Jay C. Hormel Nature Center</b> Replacement bridges identified as Bridge 9 and Bridge 6.	\$250,000	6
<b>Olmsted County Oxbow Park and Zollman Zoo</b> Moving the existing campground from a flood zone to a safer location on higher ground. The project will increase the capacity from 30 to 42 sites, including three ADA accessible sites. Additionally four fully equipped camper cabins will be added along with upgraded electric and water hook ups.	\$2,050,000	6
<b>TOTAL</b>	<b>\$11,398,765</b>	



# Greater Minnesota Regional System



# Thank You

Questions?

