



# 101 MINNESOTA NATIONAL GUARD



Department of Military Affairs



# GUARD 101 CONTENTS

## 01

### OVERVIEW

Minnesota  
National Guard

## 02

### PRIORITIES

People, Modernization  
and Partnerships

## 03

### UNITS

Major Subordinate  
Commands

## 04

### Budget and Impact

Current and Ongoing





# 01

## OVERVIEW OF THE MINNESOTA NATIONAL GUARD





# 13,000 SOLDIERS & AIRMEN

Soldiers and Airmen, from communities across the state of Minnesota, serve in a variety of full and part-time roles and stand ready to support a wide range of global and state missions.





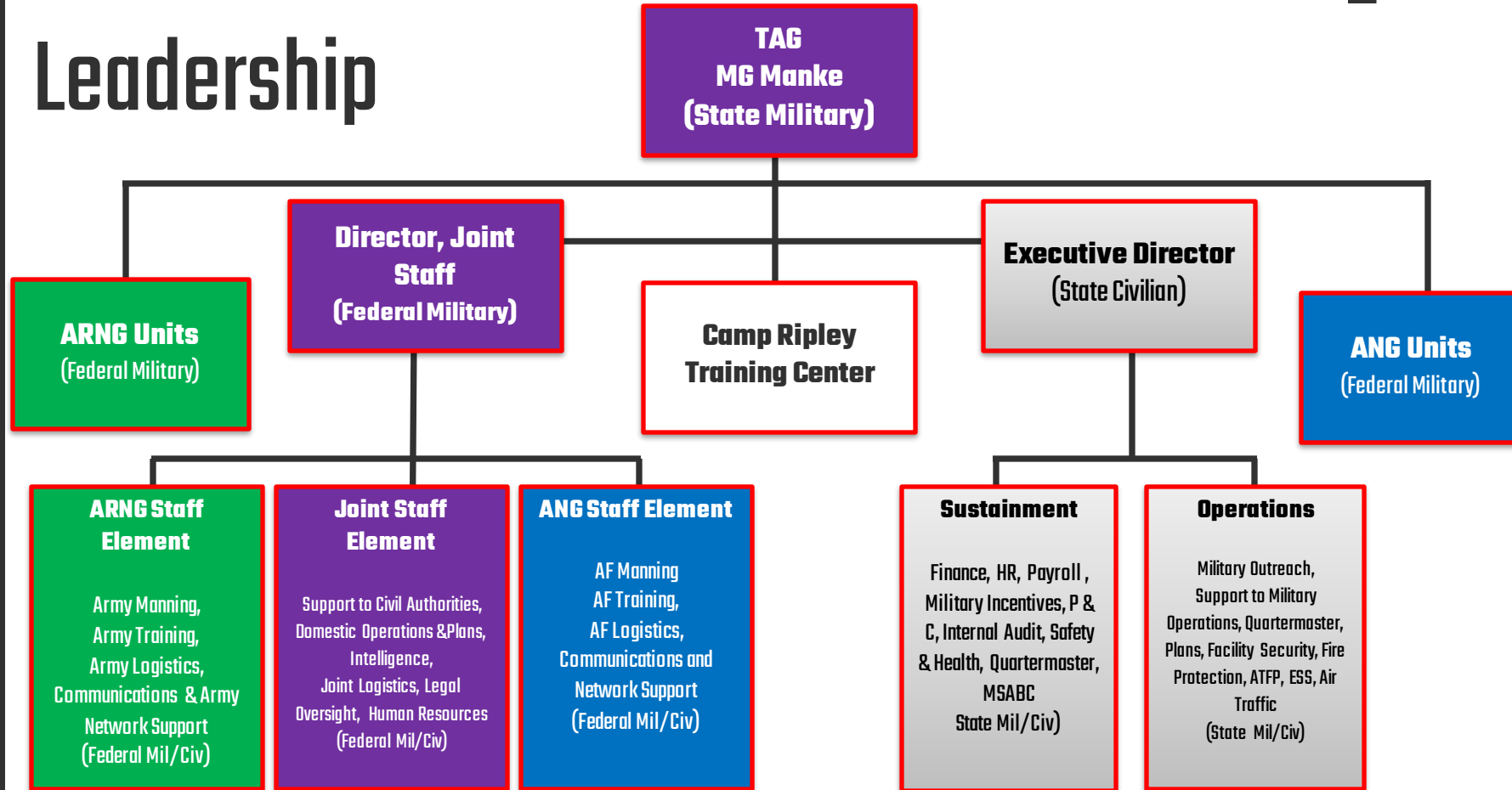
# DUAL MISSION

Members of the Minnesota National Guard swear an oath to both the President of the United States and the Governor of Minnesota. So, we have both a federal mission and a state mission.





# Leadership

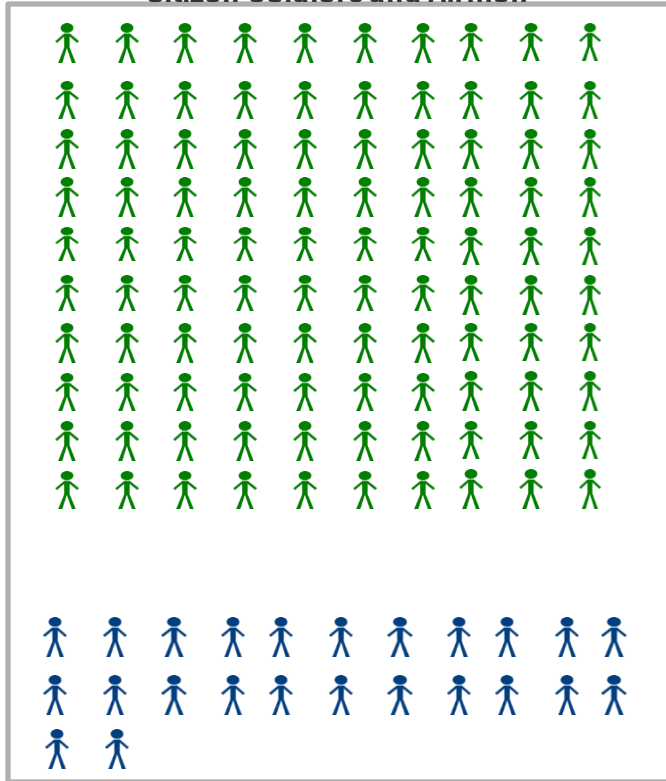




### Full Time Staff



### Citizen Soldiers and Airmen



1 icon = 100

# Full Time Staff

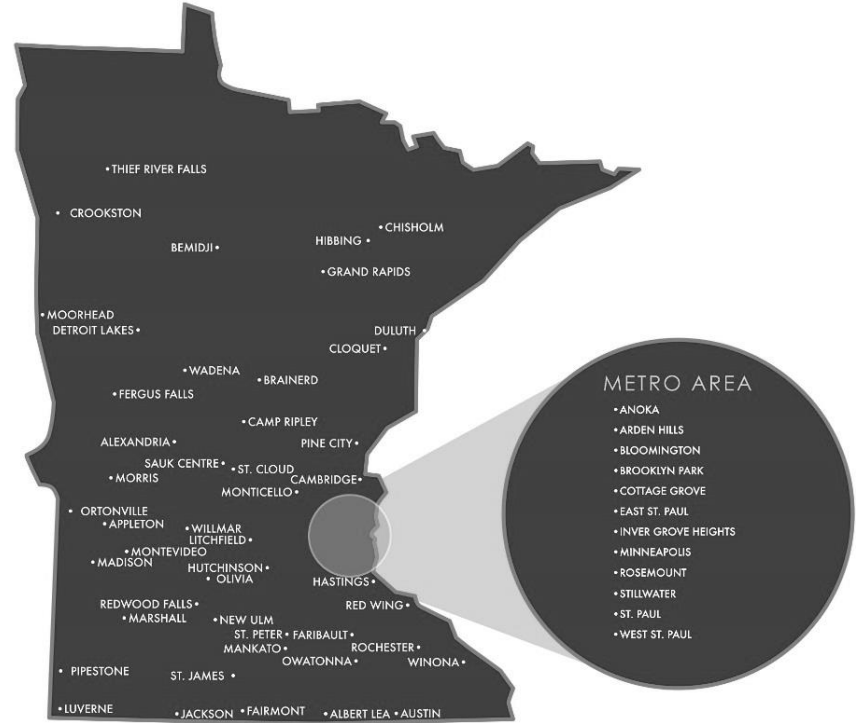


Full Time Staff are only a small portion of the overall Minnesota National Guard. They enable the readiness of the units and equipment.



# LOCATED ACROSS MINNESOTA

The Minnesota National Guard operates out of facilities in more than 50 communities throughout our state. We are continually optimizing the physical capabilities at each location to meet mission requirements and enhance local community partnerships.







# MOBILIZATIONS



## FEDERAL DEPLOYMENTS

Approximately **2,340** Minnesota National Guard Soldiers and Airmen deployed or returned home from deployments in 2021.



## STATE ACTIVE DUTY

Between 2020 and 2021, **24,699** Soldiers and Airmen were activated for 18 state active-duty missions directed by Governor's Executive Orders.

For comparison, between 2010 and 2019, there were 21 state active-duty missions requiring 231 Soldiers and Airmen.





Citizen-Soldiers and Airmen capable of fighting our nation's wars, protecting our country, and responding to our state's emergencies while remaining the most trusted institution in Minnesota.

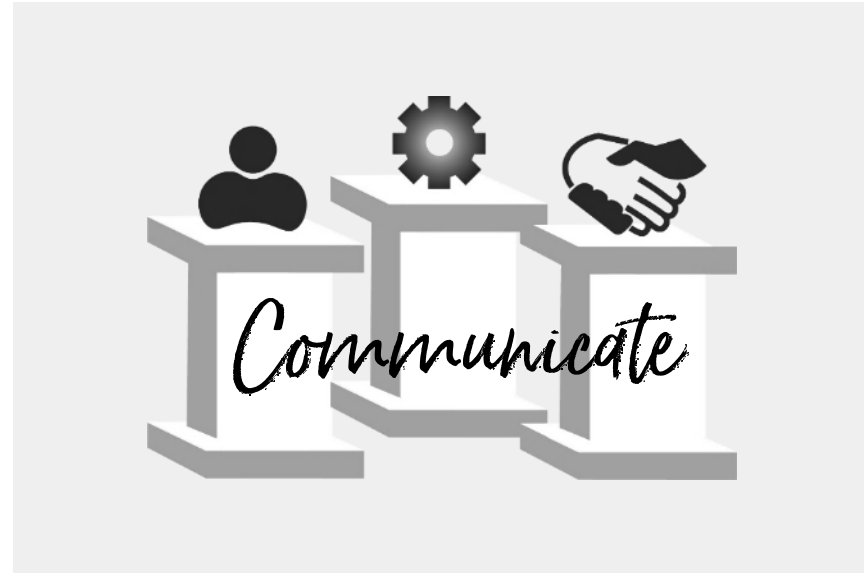
— MN NATIONAL GUARD VISION





# 02

## PRIORITIES OF THE MINNESOTA NATIONAL GUARD





**MINNESOTA NATIONAL GUARD**



**PEOPLE**



**MODERNIZATION**



**PARTNERSHIPS**

**COMMUNICATE**



# PEOPLE

People are at the center of any successful organization. Investment in our Soldiers, Airmen, and civilian employees give our organization the means to tackle the challenges our state and nation face and promote the value of choosing to serve as citizen-Soldiers and Airmen.





# MODERNIZATION

Modernization ensures we have the right forces, infrastructure, training spaces, and systems for our current and future missions. As our challenges and adversaries change, we require forces, equipment, and training to ensure our state and national security.





# PARTNERSHIPS

We value relationships with a wide range of partners, including local community groups, state agencies and civil authorities, national departments and institutions, and international organizations and allies. We strive to foster relationships that help us to better serve our communities, state, and nation.

## PARTNER ORGANIZATIONS



...AND MANY MORE.





# PARTNERSHIP SPOTLIGHT: CROATIA

## State Partnership Program

Since 1996, leaders and members of the Minnesota National Guard and the nation of Croatia have been collaborating and building relationships within the framework of the National Guard Bureau's State Partnership Program (SPP). The SPP, which links a state's National Guard with the armed forces or equivalent of a partner country in a cooperative, mutually beneficial relationship. The program encourages the development of economic, political and military connections between the states and partner nations.







# PARTNERSHIP SPOTLIGHT: NORWAY

## U.S. - NORWAY RECIPROCAL TROOP EXCHANGE



The Minnesota National Guard continues to execute the country's longest-running troop exchange with the Norwegian Home Guard, a partnership initiative that started in 1974. Soldiers and Airmen trade places to experience each other's training, military lifestyle and culture. The exchange, a tradition spanning nearly five decades, reinforces the positive working relationships between allied services and highlights the strong lineage many Minnesotans share with the Scandinavian culture.





# 03

## UNITS OF THE MINNESOTA NATIONAL GUARD





# MAJOR SUBORDINATE COMMANDS



Joint Force  
Headquarters



Camp Ripley  
Training Center



133rd  
Airlift Wing



148th  
Fighter Wing



34th Red Bull  
Infantry Division



1st Armored Brigade  
Combat Team



34th Expeditionary  
Combat Aviation  
Brigade



347th Regional  
Support Group



84th Troop  
Command



175th Regional  
Training Institute





# CAMP RIPLEY TRAINING CENTER

Camp Ripley, located near Little Falls, Minnesota, is a 53,000-acre regional training center hosting numerous ranges and state-of-the-art facilities to support the training requirements of military and civilian agencies. The training center provides services, resources, and facilities that empower organizations to conduct essential training. Supporting a wide range of customers, from local law enforcement agencies to all branches of the Department of Defense, Camp Ripley is a primary training facility for Minnesota National Guard units.



# THE DEPARTMENT OF MILITARY AFFAIRS

The Department of Military Affairs (DMA) is the state agency that oversees and supports the military operations of the Minnesota National Guard when it is operating under state control by the authority of title 32, U.S. Code.



HEADQUARTERS  
Saint Paul, Minnesota

COMMISSIONER  
Maj. Gen. Shawn Manke

EXECUTIVE DIRECTOR  
Don Kerr

EMPLOYEES  
350 Employees





# State Active Duty History

## 2006

Flood fight	
Wildfire suppression	1,282

## 2007

Fire operations in Boundary Waters Canoe Area	
Southern Minnesota Blizzard	
UND Plane Crash Recovery	
Flood fight in southern Minnesota	1,091

## 2008

Winter Storm	
Search for Body in Lake Mille Lacs	40

## 2009

Flood response	
Support for Presidential Inauguration	14,546

## 2010

Flood response in Red River Valley and Southern MN	
Fire Operations in Northern Minnesota	3,976

## 2011

Flood fight in RRV, North & South Dakota Support	
Tornado in Minneapolis, Search Mission in Duluth	6,808

## 2012

Flood response in Duluth	
Fire Operations in Northern Minnesota	143

## 2013

Winter Storm Response	
Fire Operations in Northern Minnesota	96

## 2014

Winter Storms in Albert Lea, Olivia and Owatonna	
Flood response in Sibley and Koochiching Counties	130

## 2015

Winter storm support	
Wildfire response in state and EMAC to Washington	
Avian Influenza response	469

## 2016

Wildfire response Hubbard and St. Louis counties	88
--	----

## 2017

Hurricane Support - Texas, Florida, Puerto Rico	
Super Bowl 52	4,931

## 2018

Flood Response & Winter Storm Response	143
--	-----

## 2019

Flood Response & Winter Storm Response	913
--	-----

## 2020

Civil Unrest	
COVID Response	82,912

## 2021

Operation Safety Net	
COVID Response	59,497

## 2022

Flood Response - International Falls and Red River Valley	
Flood EMAC to North Dakota	3,392

## 2023

Winter Storm Response	22
-----------------------	----





# 04

## Budget and Financial Impact





# Major Programs and Appropriations



- **Enlistment Incentives**
- **Maintenance**
- **General Support**
- **Emergency Services**
  
- **Bonding**







# EDUCATION INITIATIVES



## COLLEGE EDUCATION

G.I. Bill  
Federal Tuition Assistance  
State Tuition Reimbursement



## STARBASE

A D.O.D.-funded STEM  
program for young  
learners.





# FEDERAL TUITION ASSISTANCE & STATE TUITION REIMBURSEMENT

## FEDERAL TUITION ASSISTANCE

NOT REPORTED IN 2021 due to  
System Change

## STATE TUITION REIMBURSEMENT

1,121 PEOPLE

**\$7,470,621**

### *State Tuition Reimbursement* DEMOGRAPHICS



#### RANK

- Junior Enlisted (52%)
- Mid-Grade Noncommissioned Officer (33%)
- Senior-Grade Noncommissioned Officer (3%)
- Officer (9%)
- Warrant Officer (1%)
- Civilian (2%)



#### RACE

- White/Caucasian (61%)
- Black or African American (7%)
- Asian (5%)
- Unspecified (26%)
- American Indian or Alaskan Native (1%)



#### GENDER

- Male (65%)
- Female (35%)





# ECONOMIC IMPACT

**FEDERAL MASTER  
COOPERATIVE AGREEMENT**

\$90 MILLION

**STATE IMPACT**

\$53 MILLION

**FEDERAL IMPACT**

\$533 MILLION

**TOTAL IMPACT**

**\$676 MILLION**



OVERVIEW

PRIORITIES

UNITS

INITIATIVES

A black and white photograph of a military aircraft on a tarmac. The aircraft has "U.S. AIR FORCE" and the number "1001" visible on its side. Several soldiers in full combat gear, including helmets and tactical vests, are seen from behind, standing in a line and looking towards the aircraft. The scene is set outdoors, possibly at dusk or dawn, with some lights visible on the aircraft.

# THANK YOU

from the MINNESOTA NATIONAL GUARD