



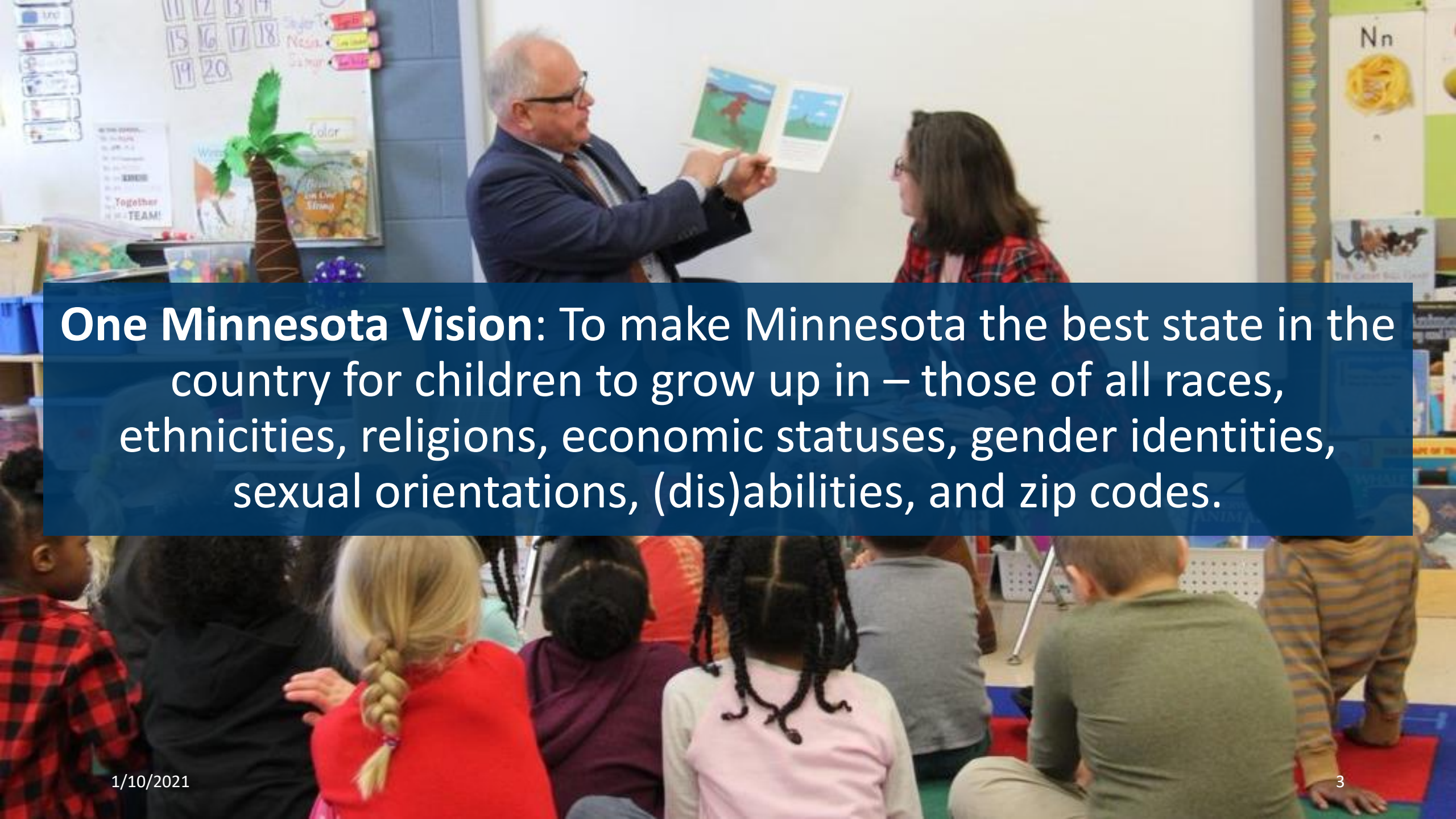
Agency Overview

January 11, 2021 | House Education Policy Committee

A grayscale background image showing a group of diverse students in graduation caps and gowns, smiling and celebrating. The image is slightly faded to allow the text to stand out.

Ten Minnesota Commitments to Equity

1. Prioritize equity.
2. Start from within.
3. Measure what matters.
4. Go local.
5. Follow the money.
6. Start early.
7. Monitor implementation of standards.
8. Value people.
9. Improve conditions for learning.
10. Give students options.

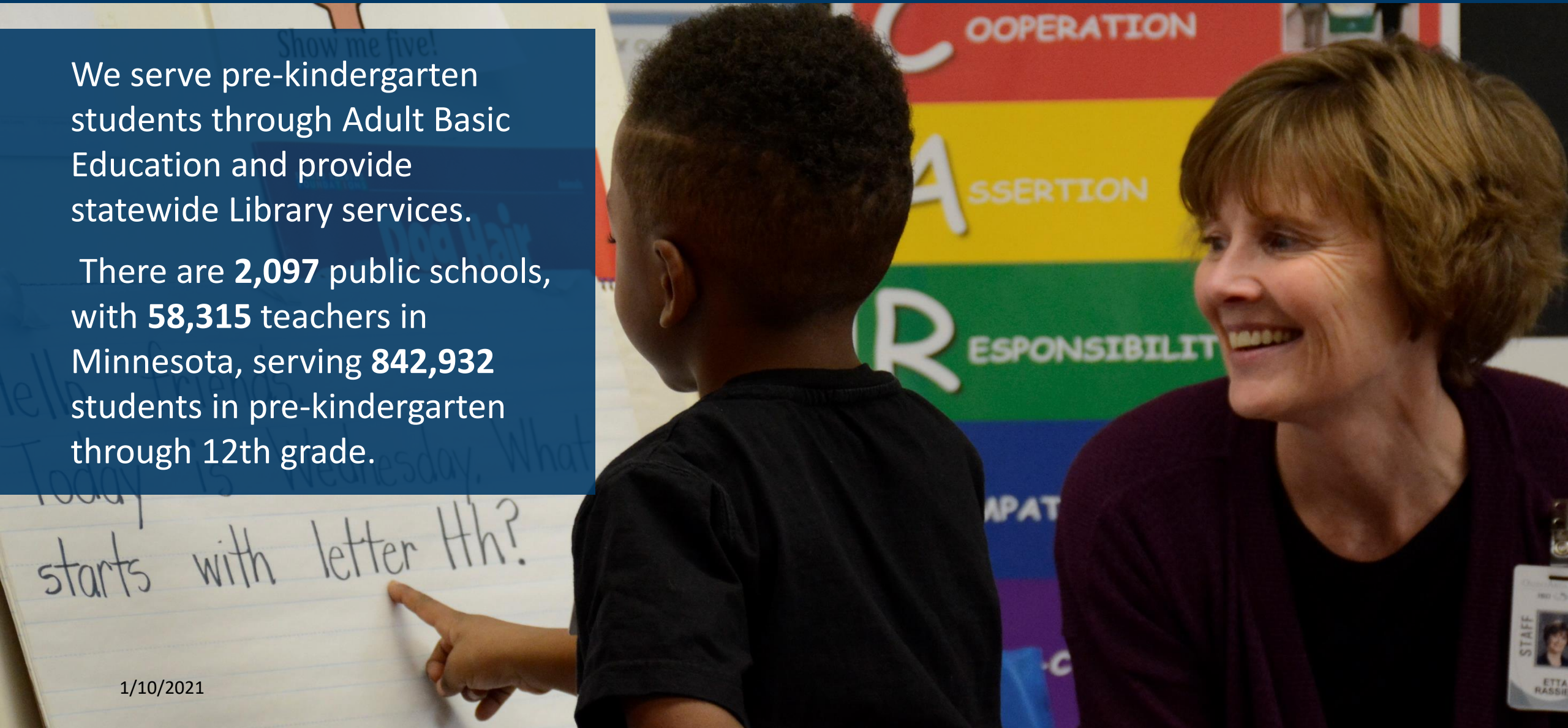
A photograph of a classroom. In the upper half, a male teacher with glasses and a blue blazer is holding an open book and pointing to a picture of a dinosaur. He is facing a female teacher with long brown hair and a red plaid shirt. In the lower half, a group of diverse young children are sitting on the floor, looking towards the teachers. The background shows classroom decorations, including a calendar, a small palm tree, and alphabet cards.

One Minnesota Vision: To make Minnesota the best state in the country for children to grow up in – those of all races, ethnicities, religions, economic statuses, gender identities, sexual orientations, (dis)abilities, and zip codes.

Who do we serve?

We serve pre-kindergarten students through Adult Basic Education and provide statewide Library services.

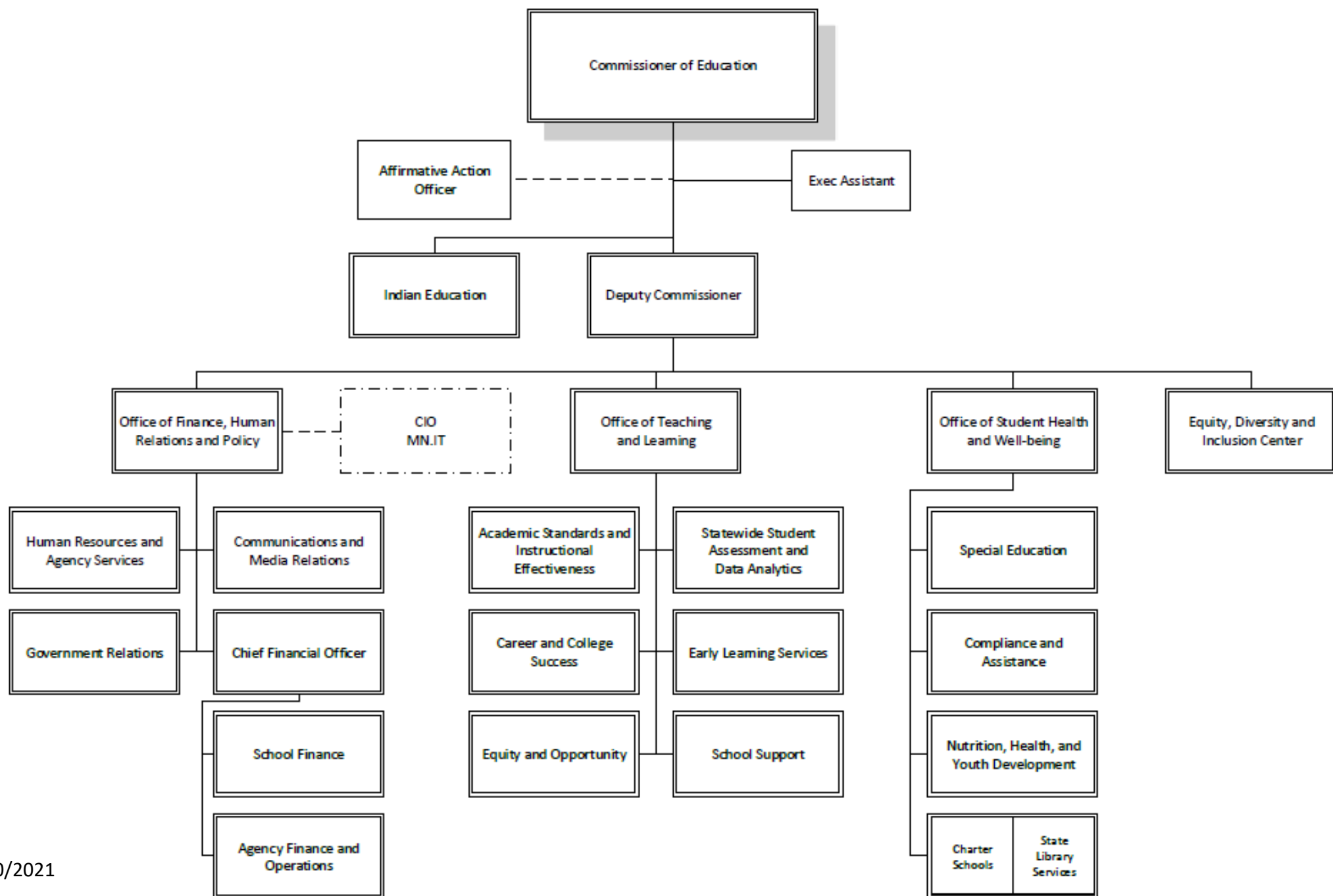
There are **2,097** public schools, with **58,315** teachers in Minnesota, serving **842,932** students in pre-kindergarten through 12th grade.



MDE's Support and Services

- Provide support and leadership for, and partnership with, local education agencies and organizations
- Develop and provide tools and resources for students, educators, and families.
- Provide professional development and technical assistance to teachers and school leaders.
- Provide support and assistance to families.
- Distribute State and federal school aid and grants.
- Collect and analyze data.
- Oversee state and federal accountability.
- Provide state and federal compliance and regulatory responsibility.
- Implement laws, programs and guidance to educators.







Who are we and
what do we do?

- Equity, Diversity and Inclusion Center
- Office of American Indian Education
- Teaching and Learning
- Student Health and Well-being
- Finance and Operations

Equity, Diversity and Inclusion Center

EDI Center Director will help to:

- build and strengthen a holistic EDI strategy that ensures that all people are treated equitably and supported, pursue a shared vision of equity, and enable the Minnesota Department of Education to build and grow its work towards employee inclusion and educational equity.
- support the development and implementation of an equity framework that can be used by the public school districts that we support.
- work with staff at all levels to develop and implement strategies and procedures that drive organizational change, foster a positive and inclusive work environment, and ensure that equity, diversity, and inclusion are factored into the decision-making processes of the agency, and the agency's partners

Equity, Diversity and Inclusion Center

EDI Center Director duties include:

- Directing and overseeing the agency's internal equity, workforce diversity and inclusion, equal opportunity, and affirmative action goals strategies, activities and programs;
- Providing leadership and recommendations to schools, districts and communities in Minnesota to better support students, families, and communities across the State of Minnesota;
- Ensuring agency compliance and adoption of all applicable State and Federal Civil Rights and EEO/AA laws.

Office of American Indian Education

- The Office of American Indian Education has three staff who serve the 26,116 American Indian students in the state, as well as their families, teachers, administrators and superintendents.
- The Office provides resources, guidance and assistance to districts, charter and tribal schools, American Indian parent Advisory Committees, many American Indian Education constituents, and the Minnesota Department of Education as a whole.
- Under the Indian Education Act of 1988, the Office specifically serves 211 districts in the state with more than 10 American Indian students.

- Equity and Opportunity
- Assessments
- Academic Standards
- Career and College Success
- Early Learning Services
- School Support

Equity and Opportunity

The Division of Equity and Opportunity strives to ensure equitable educational outcomes for all students through:

- Leadership of state and federal program implementation
- District and charter school support in funding equity-focused programming
- Ensuring LEA and state compliance with all federal rules and regulations related to accepted awards

Equity and Opportunity – State Programs

- World's Best Work Force
- Achievement and Integration
- Multilingual Learner Education
 - Learning English for Academic Proficiency and Success (LEAPS)
 - World Language Education
 - State English Learner (EL) Program
 - Community Engagement on Implementation of LEAPS Act

Equity and Opportunity - Federal Programs

- Every Student Succeeds Act (ESSA) Accountability
- Elementary and Secondary Education Act (ESEA) Title Programs
- CARES Act Education Funding
 - Elementary and Secondary School Emergency Relief (ESSER)
 - Governor's Emergency Education Relief (GEER)

Equity and Opportunity - Federal Programs

ESEA Federal Title Programs

- Title I, Part A: Academic Achievement, including Family & Community Engagement
- Title I, Part C: Education of Migratory Children
- Title I, Part D: Prevention & Intervention Programs for Children and Youth who are Neglected, Delinquent, or At-Risk
- Title II, Part A: Supporting Effective Instruction
- Title III, Part A: English Language Acquisition and Language Enhancement (including focused support for immigrants)
- Title IV, Part A: Student Support and Academic Enrichment
- Title V, Part B: Rural Education Achievement Program
- Title IV, Part A: McKinney-Vento Homeless Assistance

Minnesota's Assessments for Minnesota's Students

- Assessing Comprehension and Communication in English State-to-State (ACCESS) and Alternate ACCESS for English Language Learners
- Minnesota Comprehensive Assessments (MCA) and Minnesota Test of Academic Skills (MTAS)

The cross-agency team provides a range of services around data in areas such as:

- Accountability
- School finances
- Student demographics and trends
- Discipline
- Early learning
- Special education

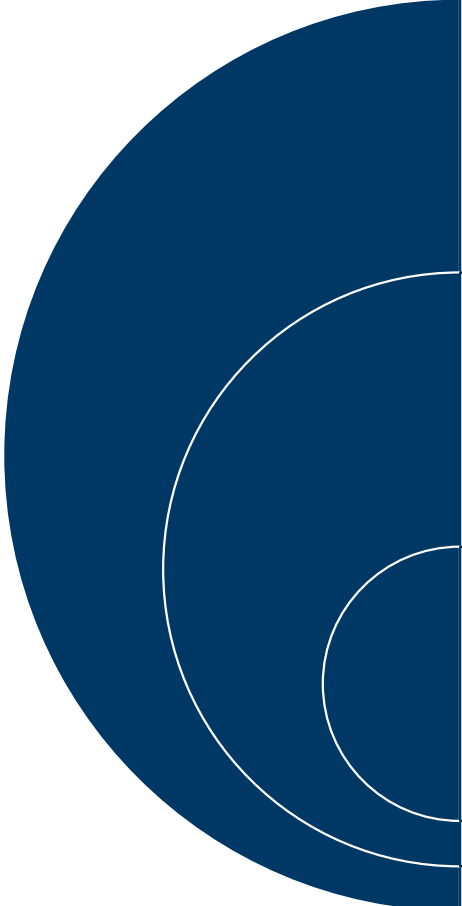
Academic Standards and Instructional Effectiveness

- Review, Revise, and Implement K-12 Academic Standards in arts, science, English language arts, social studies, math, physical education
- Training, professional guidance, and assistance to support teachers
 - PD on Demand Canvas Courses
 - Transition plans for PE, arts, and science to revised standards
 - LETRS
 - Standards Portal
- Dyslexia Support
 - Screening
 - Read Well by 3rd Grade Plans

Academic Standards and Instructional Effectiveness

- Instructional Integration
 - Gifted and Talented and Enrichment
 - STEM (Science, Technology, Engineering, and Mathematics)
 - Computer Science
 - Environmental and Outdoor Learning
 - Turnaround Arts
- Implementation of Federal Grants to improve instruction programs
 - Universal Plus Gifted and Talented
 - Striving Reader Comprehensive Literacy & Comprehensive Literacy State Development
 - Student Support and Academic Enrichment
- Reward Programs


Career and College Success Division: Career Development and Technical Education



Career and College Readiness	<ul style="list-style-type: none">• Career and College Readiness Resource• Business Engagement and Advisory Committees• Community Education
Career and Technical Education	<ul style="list-style-type: none">• Federal Perkins Funding• CTE Levy Funding• CTE New Teacher Initiative• Teacher Recruitment and Retention• Career and Technical Student Organizations
Work-based Learning	<ul style="list-style-type: none">• ACTE-SPED Funding• Youth Apprenticeships• Experiential Learning (Job shadowing, industry tours, guest speakers, mentorships, etc.)

Career and College Success Division: Adult Basic Education


Adult Basic Education works **collaboratively with other state level partners** such as: WIOA postsecondary institutions, social services, employers and others to better serve Minnesotans.



Adult Literacy Instruction	<ul style="list-style-type: none">• Essential skills and English Language Learning
Adult Secondary Credential Options	<ul style="list-style-type: none">• High school equivalency testing• Standard Adult High School Diploma• Credit completion in collaboration with local schools
Adult Career Pathway Programming	<ul style="list-style-type: none">• Essential academic, employability and career skills integrated

Career and College Success Division: High School to Postsecondary Initiatives

In addition to the following programs, this unit also creates and supports various **Career and College Ready Resources**, including: Personal Learning Plans, CCR Resource Guide, Minnesota Goes to College program.



Alternative Learning Programs	<ul style="list-style-type: none">• Extended Time (Targeted Services and Credit Recovery)• Core School Day Programs
Dual Credit Programs	<ul style="list-style-type: none">• Postsecondary Enrollment Options (PSEO)• International Baccalaureate (IB) and Advanced Placement (AP)• Concurrent Enrollment
Online Learning Programs	<ul style="list-style-type: none">• Comprehensive (full-time) programs• Supplemental classes
Minnesota Career Information System (MCIS)	<ul style="list-style-type: none">• Programming and support for creating career and college plans

Early Learning Services

Staff partner with schools, charter schools, Head Start, child care programs and community –based organizations to:

- Enhance state/regional system of P3 leadership and professional development
- Expand access to high-quality inclusive learning opportunities
- Strengthen alignment of instruction, assessment, and curriculum to PreK-3rd Grade standards
- Strengthen guidance and implement best practice for early childhood special education students, dual language learners, and intentional family and community engagement
- Promote strategies that ensure the state has a highly skilled early childhood workforce
- Use data to ensure equitable policy, planning, practice and professional development

School Support Division

Educator Effectiveness Unit

- Alternative Teacher Professional Pay System (Q Comp)
- Teacher and Principal Development and Evaluation
- Equitable access to diverse and effective educators
- School leader coaching and support

School Climate Center

- Social-emotional learning
- School mental health services
- Discipline policy
- Restorative Practices
- Bullying prevention
- School Climate Transformation Grant
- Project AWARE grant

School Support Division (Continued)

School Improvement Unit

- Supports for schools identified for improvement in Minneapolis Public Schools and St. Paul Public Schools
- Full-service community schools
- Family engagement supports
- English learner programming supports
- Minnesota Early Indicator and Response System 2.0

Regional Centers of Excellence

- Direct supports for schools identified for improvement under the Every Student Succeeds Act
- Principal leadership specialists
- School climate specialists
- Tribal nation consultation and engagement supports

The School Support Division also includes the agency's Equity Specialist and Active Implementation Specialist positions, who work agency-wide to support schools and districts.

Student Health and Well-Being

- Compliance and Assistance
- Nutrition, Health, and Youth Development
- Special Education
- Charter Schools
- State Library Services

Compliance and Assistance Division

Special Education Program Monitoring

- Ensures general compliance and continuous improvement in the implementation of the federal Individuals with Disabilities Education Act (IDEA) and state special education statutes
- Offers online training opportunities, including navigating individualized education program (IEP) goals and objectives, progress reporting, and prior written notices

Special Education Fiscal Monitoring

- Provides oversight of special education formula grants to ensure compliance
- Risk analysis, desk reviews, on-site reviews, and the Minnesota Continuous Improvement Monitoring Process (MnCIMP)

Compliance and Assistance Division

Special Education Due Process and Dispute Resolution

- Administers the special education alternative dispute resolution, complaint, and hearing systems to provide support to parents, districts, and charter schools when special education conflicts arise
- Facilitates the State Restrictive Procedures Workgroup

Student Maltreatment Program

- Assesses and investigates reports of alleged physical abuse, neglect or sexual abuse of students that occurs in Minnesota public schools and charter schools

Nutrition, Health, and Youth Development Division

School Nutrition Programs

- National School Lunch Program (NSLP), School Breakfast Program (SBP) and After School Care Program.

Child and Adult Care Food Program (CACFP)

- Provides payments for meals and snacks served at Adult Care Centers, Child Care Centers, Day Care Homes, At-Risk Afterschool Care Centers and Emergency Shelters

Summer Food Service Program (SFSP)

- Provides cash reimbursement to sponsoring schools and non-profit organizations that serve nutritious meals and snacks at sites for meals served to children, age 18 and under, when school is not in session

Nutrition, Health, and Youth Development Division

Food Distribution Program

- Distributes U.S. Department of Agriculture (USDA) Commodity Foods to Minnesota schools participating in the National School Lunch Program and/or the Summer Food Service Program (SFSP)

Milk Programs

- Special Milk Program (SMK) and The Minnesota Kindergarten Milk Program

Team Nutrition

- Provides training and technical assistance to food service staff, nutrition education for children and their caregivers, and school and community support for healthy eating and physical activity

Nutrition, Health, and Youth Development Division

21st Century Community Learning Centers

- Establishes or expands community learning centers that provide students with enrichment opportunities during nonschool hours or periods when school is not in session (such as before and after school or during summer recess)

Minnesota Youth Council – Student Advisory Committee

- The Minnesota Department of Education partners with the MYC's Student Advisory Committee to work towards ensuring equal access to learning opportunities and increase the options available for students in order to create better educational experiences

- Provide training, information and resources, policy development and technical assistance to districts and other stakeholders through a variety of projects, initiatives and grants.
- Help with local planning and service delivery, program implementation, program evaluation and problem solving centered around positive outcomes for students with disabilities.
- Least restrictive environment/most integrated settings, graduation and secondary transition, and equity and equitable outcomes.

Special Education Division's Guiding Principles

Support whole-child thinking

- Educational support is based on each child's unique needs to prepare them for further education, employment, independent living, and community participation.

Collaborate with our partners

- We collaborate with and value the contributions of our partners.

Model accountability

- We promote and measure evidence-based outcomes that are meaningful to our communities.

Special Education Division Programs

- Alternative Delivery of Specialized Instructional Services (ADSIS)
- Assistive Technology
- Care and Treatment Education Programs
- Categorical Disabilities
- Coordinated Early Intervening Services (CEIS)
- Positive Behavioral Interventions and Supports (PBIS)
- Recruitment and Retention of Special Educators
- Secondary Transition
- Third Party Reimbursement

- Provides leadership, support and oversight to promote high-quality charter schools and authorizer excellence under Minnesota's charter school law
- Conducts evaluation and approval processes; provides consultation, training and technical assistance to charter schools and authorizers; and develops resources to foster a strong state chartering environment.
- Manages the federal Charter School Program grant, currently funded at \$38.5 million over five years, to increase the number of high-quality charter schools in the state

- Delivers training, technical assistance and resources designed to increase charter school performance and quality and increase effective authorizing practices and authorizer excellence
- Promotes opportunities for charter schools to implement high-quality early learning instructional programs

- School Choice Ombudsman provides support and technical assistance to families and schools on:
 - Flexible Learning Year
 - Compulsory Instruction
 - Nonpublic and Homeschool Requirements

State Library Services

- Partners with libraries to achieve equity and excellence in our collective work for Minnesotans.
- Administers federal grant, state aid, and state grant programs that benefit all types of libraries.
- Manages the Minnesota Braille and Talking Book Library.

State Library Services - State Programs

- Regional Library Basic System Support
- Regional Library Telecommunications Aid
- MultiCounty MultiType Aid
- Library Construction Grant Program
- Arts and Cultural Heritage Fund for Libraries
- Electronic Library for Minnesota

State Library Services - Federal Programs

- Library Services and Technology Act: Grants to States Program
 - ~2.7 million annually
 - Approved Five Year Plan guides use of funds
 - Supports statewide services like interlibrary loan and Braille and Talking Book Library
 - Offers competitive grant opportunities for innovative library programs to local libraries (school, public and academic)
 - Funds initiatives aimed at increasing equity, diversity and inclusion in libraries and library services

Finance and Operations

- School Finance
- Agency Finance
- MN.IT @ MDE
- Human Resources
- Communications
- Government Relations

- Administer the state's E-12 school finance system
 - State and Federal school aid payments
 - Support State Policymakers
 - Fiscal Analysis and Budget Forecasts
 - Property Tax levy limitations
- Data/Education Funding
 - Student and School Data Collection
 - Aid entitlements and levies

School Finance (continued)

- Financial Management to local education agencies
 - Audits
 - Uniform Financial Accounting and Report Standards (UFARS)
 - Technical Assistance
- School Facilities
- Pupil Transportation

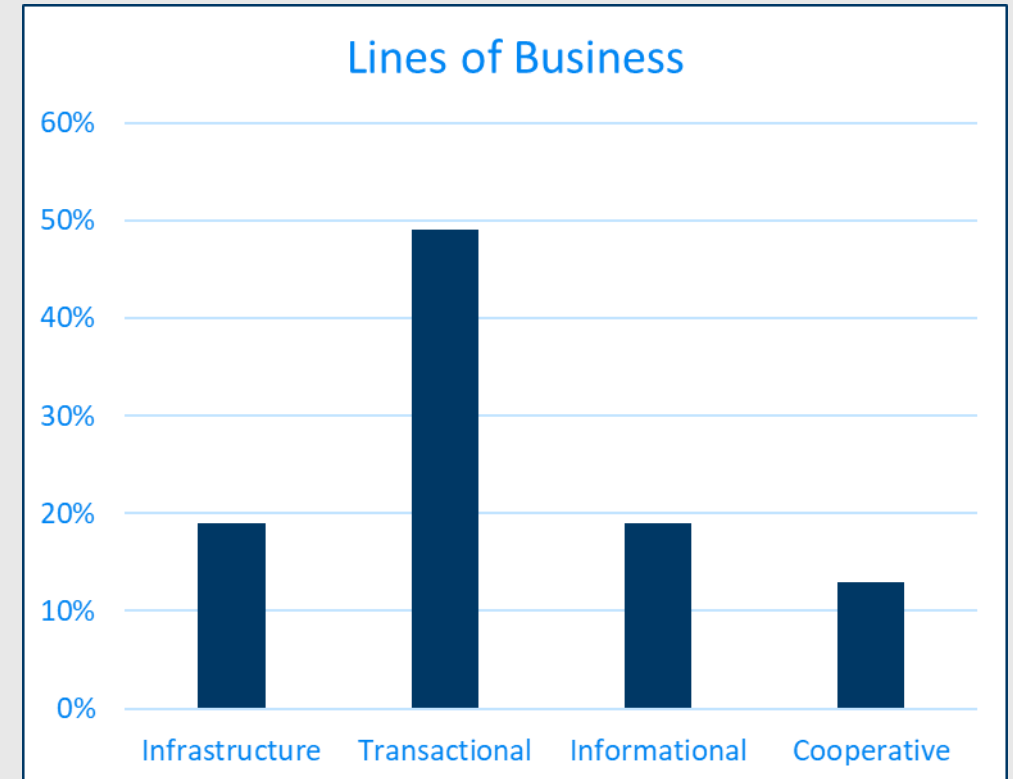
- Budget Coordination and Development
 - Biennial, Supplemental, Annual and Capital Budget
- Financial Accounting and Reporting
 - State and Federal
- Grant Management and Administration
- Federal Funds Management

Agency Finance (continued)

- Internal Control and Risk Mitigation
- Accounting Operations
 - Procurement and Contracts
 - Accounts Payable and Receivable
 - Payroll

Lines of Business

- Infrastructure
- Transactional
- Informational
- Cooperative (Strategy)



MN.IT @ MDE (continued)

Portfolio Overview

High Priority Projects in FY21

- Safe Learning Plan Dashboard
- P-EBT 2.0
- Foster Care Reports
- MOMA Enhancements
- SERVS Financial Payment Process Rewrite
- North American Indian Race/Ethnicity Filters



- Communications
- Government Relations
- Human Resources

Thank you!

Questions?