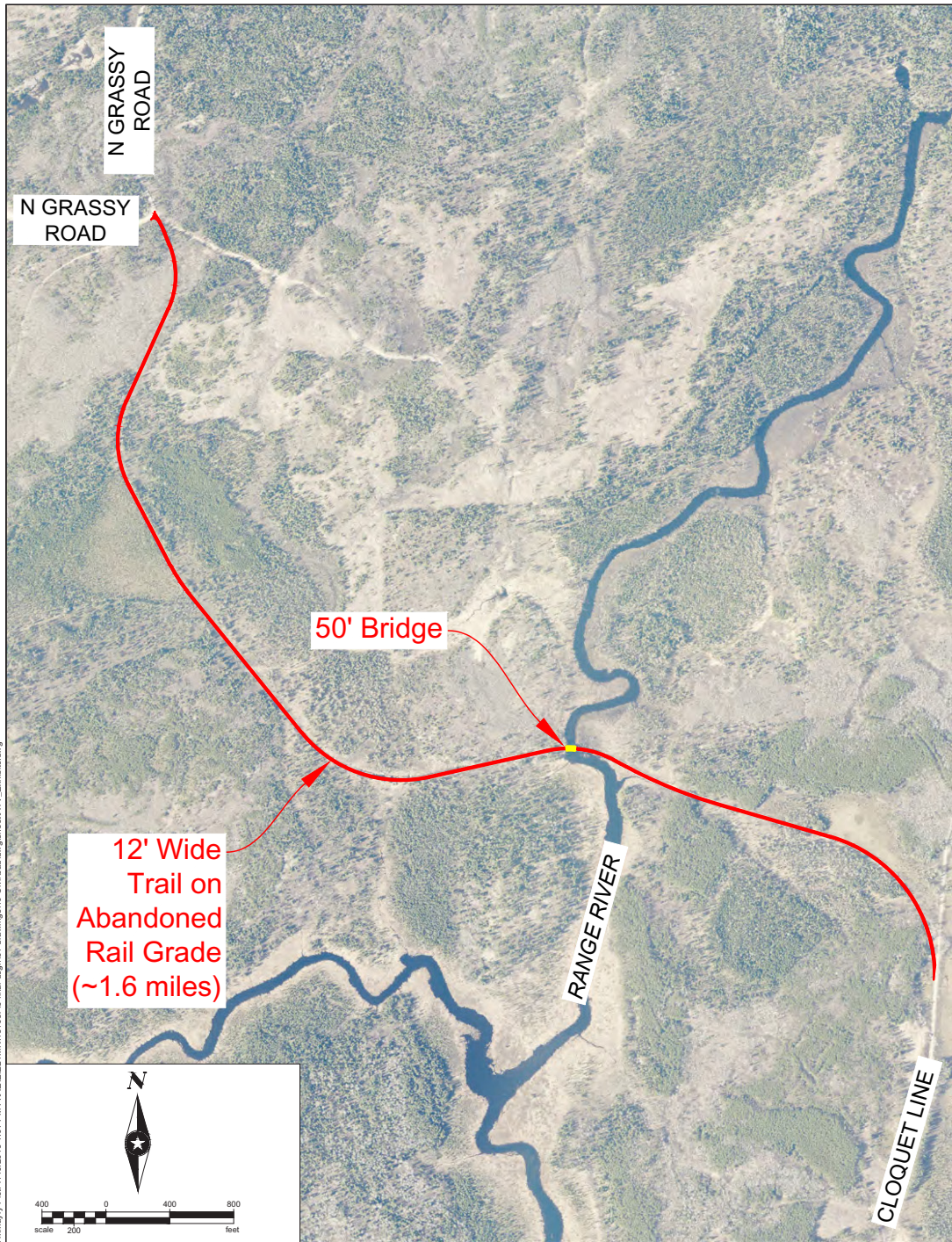


PROSPECTOR ATV CLUB

\$700,000 Request Exhibit 1 - Cloquet Line to Echo Trail

This 1.6 mile trail segment will join the Cloquet Line to the Echo Trail, both are currently open to ATVs. We are going to repurpose a bridge over the Range River that previously was on federal land south of Ely. The Forest Service has allowed us to hold on to that bridge to be used to cross the Range River.

Estimated cost: \$837,500



Save: 7/16/2019 12:41 PM \\mymy\pict\7/16/2019 1:01 PM P:\A\B\EL\YMN\1516376-feat-dgms\51-drawings\10-Cloquet\atvtrail\atvtrail.dwg



FILE NO. ELYMN 151637	CLOQUET LINE TO N GRASSY LAKE ROAD ATV TRAIL EXHIBIT	EXHIBIT NO. 1
DATE: 7/16/2019		

\$700,000 Request Exhibit 2 - Bear Run

This 12.5 mile trail segment will connect the Taconite Trail to the Wolf Lake and Mud Creek roads and open up hundreds of acres of woods and lakes for access by ATVers. Much of this is St. Louis County land and former Commissioner and State Representative Tom Rukavina was a big supporter of this project.

Estimated cost: \$556,700



REQUEST \$750,000

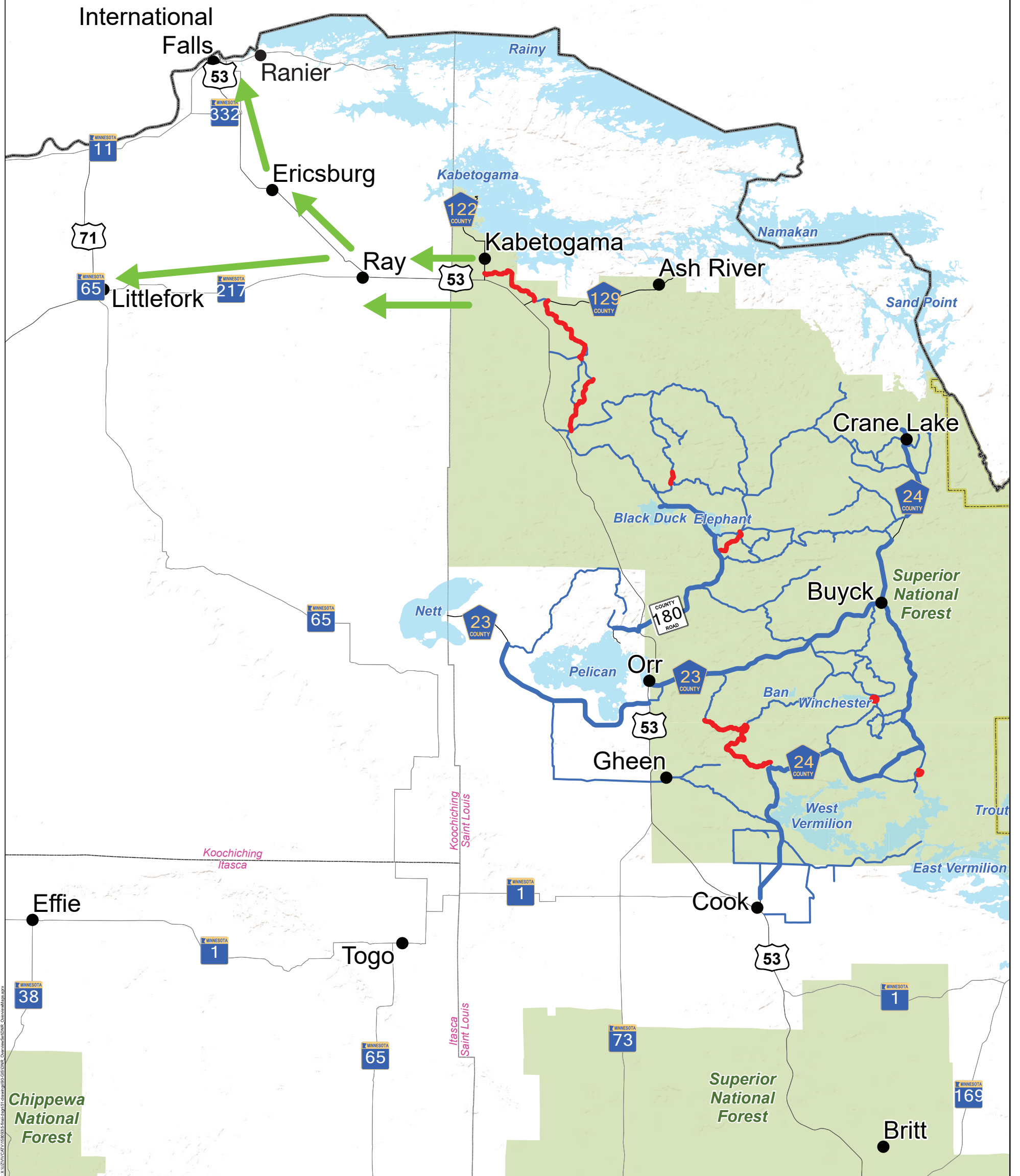
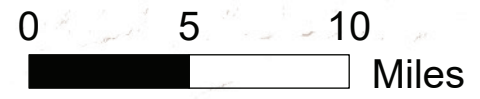
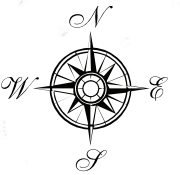


Requesting \$750,000 for Voyageur Country ATV club Dedicated Account for Koochiching County Connection & Trail Construction.

Voyageur Country ATV is beginning to plan Phase Two of our system connecting our current trails north to Ray, Ericsburg, Littlefork, and International Falls. The funding is needed for these items: estimated \$35,000 to identify potential alignments; \$125,000 for a contracted Phase Two EAW (Environmental Assessment Worksheet); and \$590,000 for engineering, design, environmental work, permitting, acquisition, and construction on Voyageur Trail System.

Legend

- Current Trail System
- Corridor Routes
- 2022 Currently Funded New Segments
- ← Phase 2 Future Connections



3535 VADNAIS CENTER DR.
ST. PAUL, MN 55110
PHONE: (651) 490-2000
FAX: (888) 908-8166
TF: (800) 325-2055
www.sehinc.com

Project: VCATV P-160654
Print Date: 9/21/2021
Map by: B. Tolser
Projection: NAD83 UTM 15N
Source: MNDNR, SEHINC, VCATV

PHASE 2 FUTURE CONNECTIONS VOYAGEUR COUNTRY ATV SYSTEM St. Louis County, Minnesota

Figure 1

This map is neither a legally recorded map nor a survey map and is not intended to be used as one. This map is a compilation of records, information, and data gathered from various sources listed on this map and is to be used for reference purposes only. SEH does not warrant that the Geographic Information System (GIS) Data used to prepare this map are error free, and SEH does not represent that the GIS Data can be used for navigational, tracking, or any other purposes requiring exacting measurement of distance or direction or precision in the depiction of geographic features. The user of this map acknowledges that SEH shall not be liable for any damages which arise out of the user's access or use of data provided.