



EAB Biology, Distribution, and Spread

Mark Abrahamson | Plant Protection Division Director

EAB Biology



EAB Biology

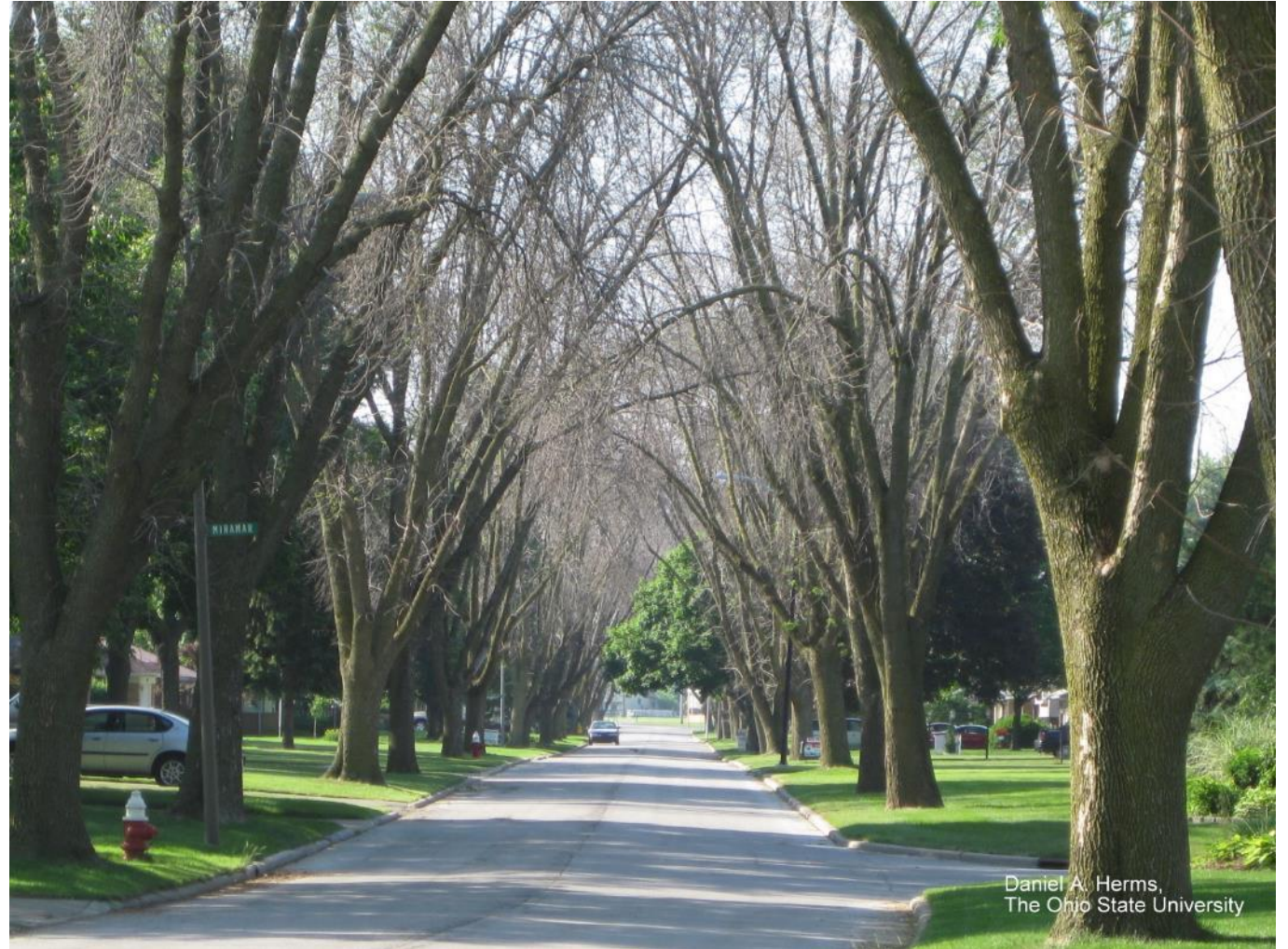


14:37 DEC/10/2012

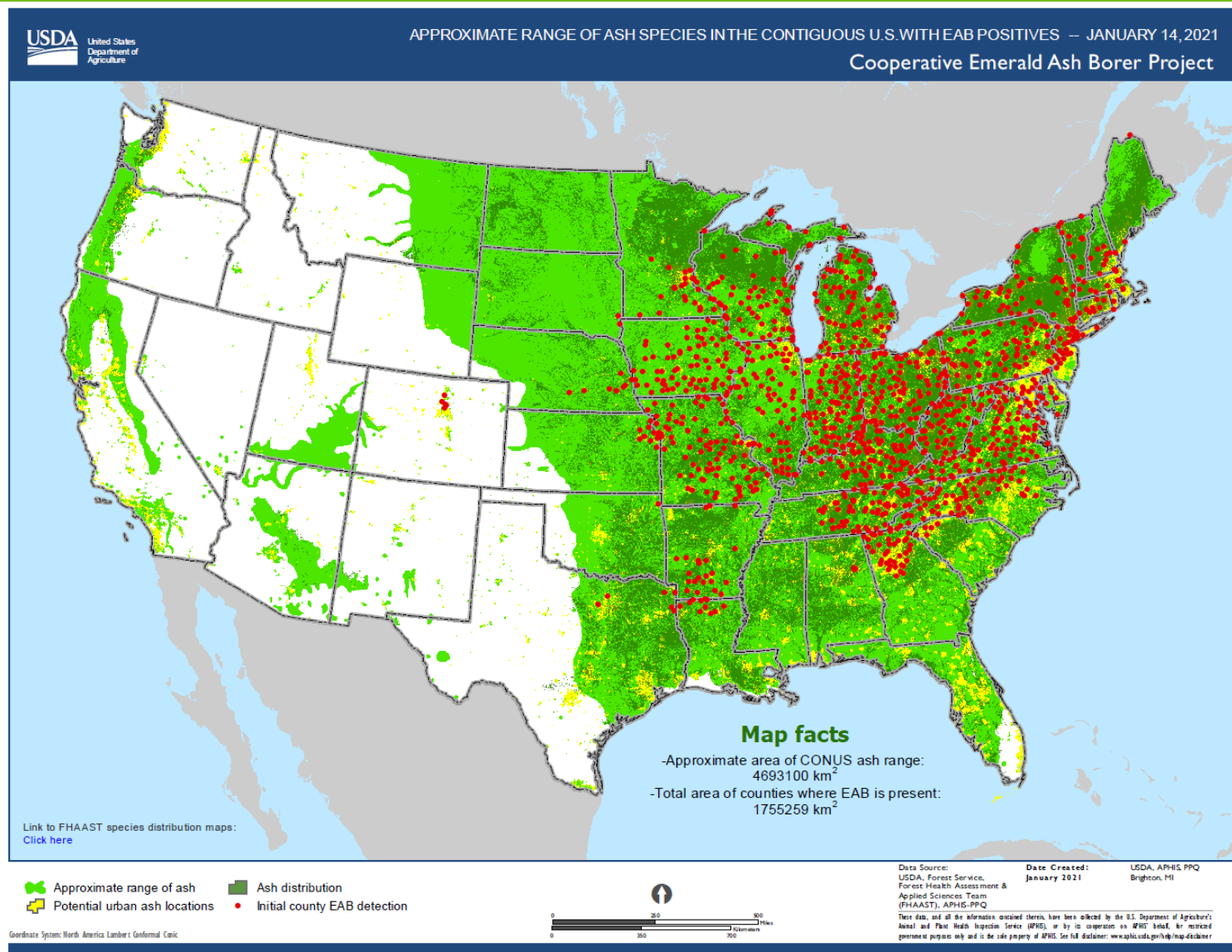


Daniel A. Herms, The Ohio State University

EAB Biology

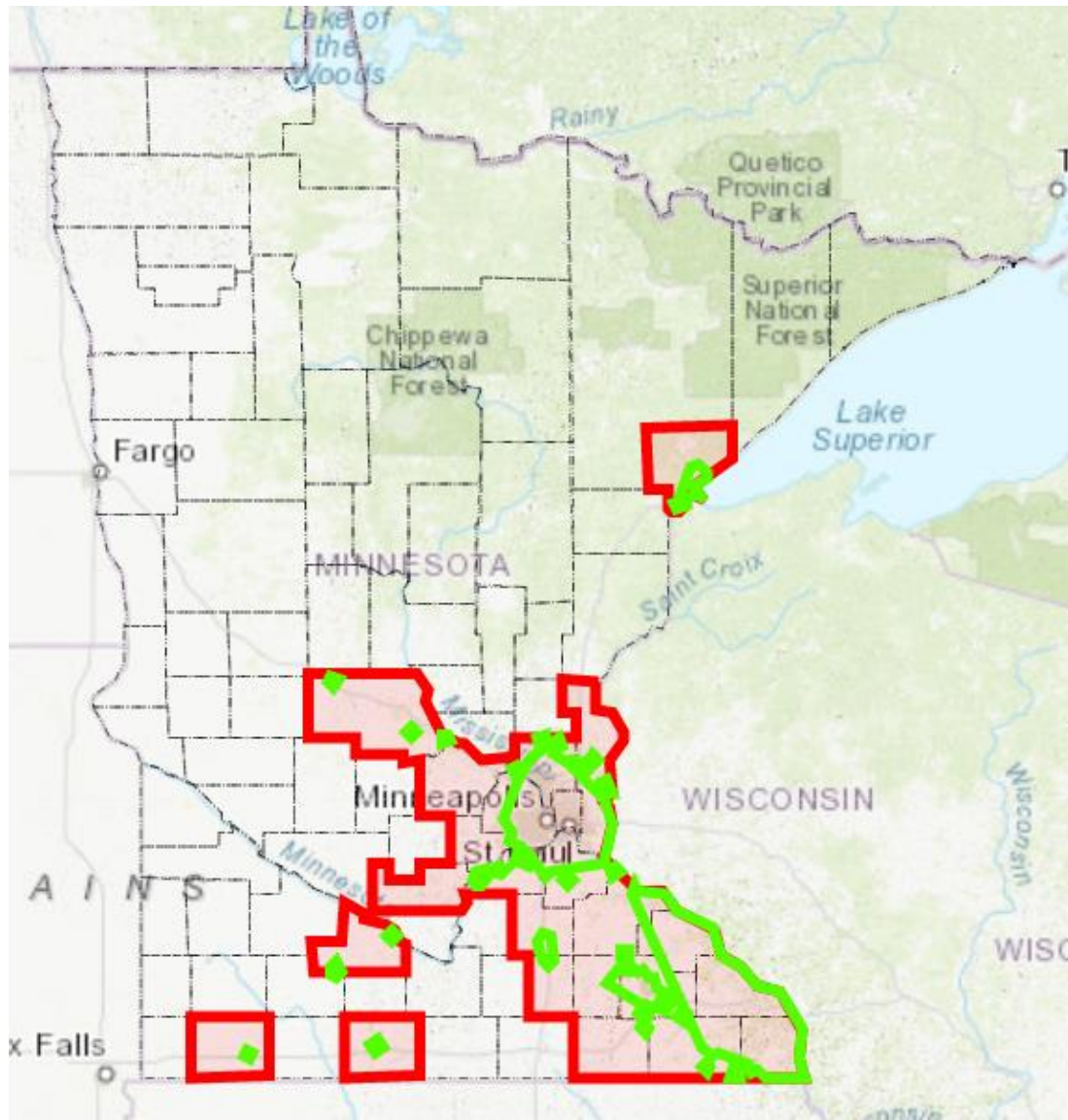


EAB Distribution and Spread



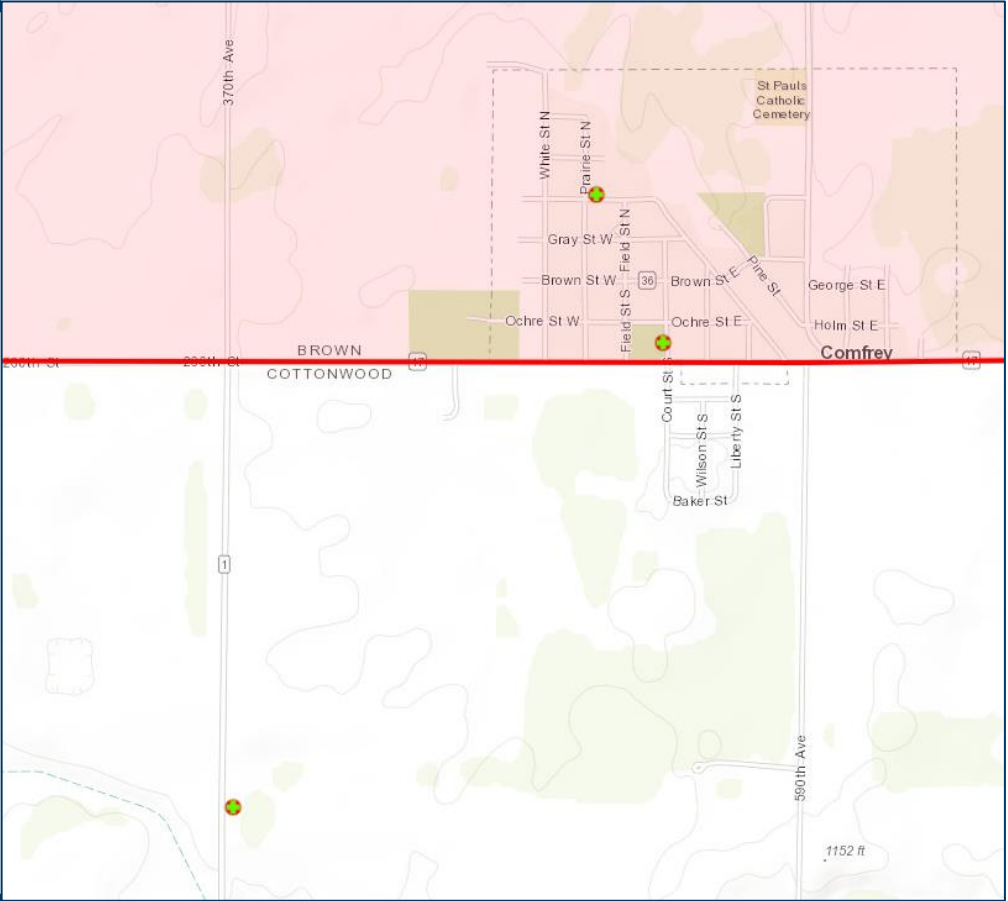
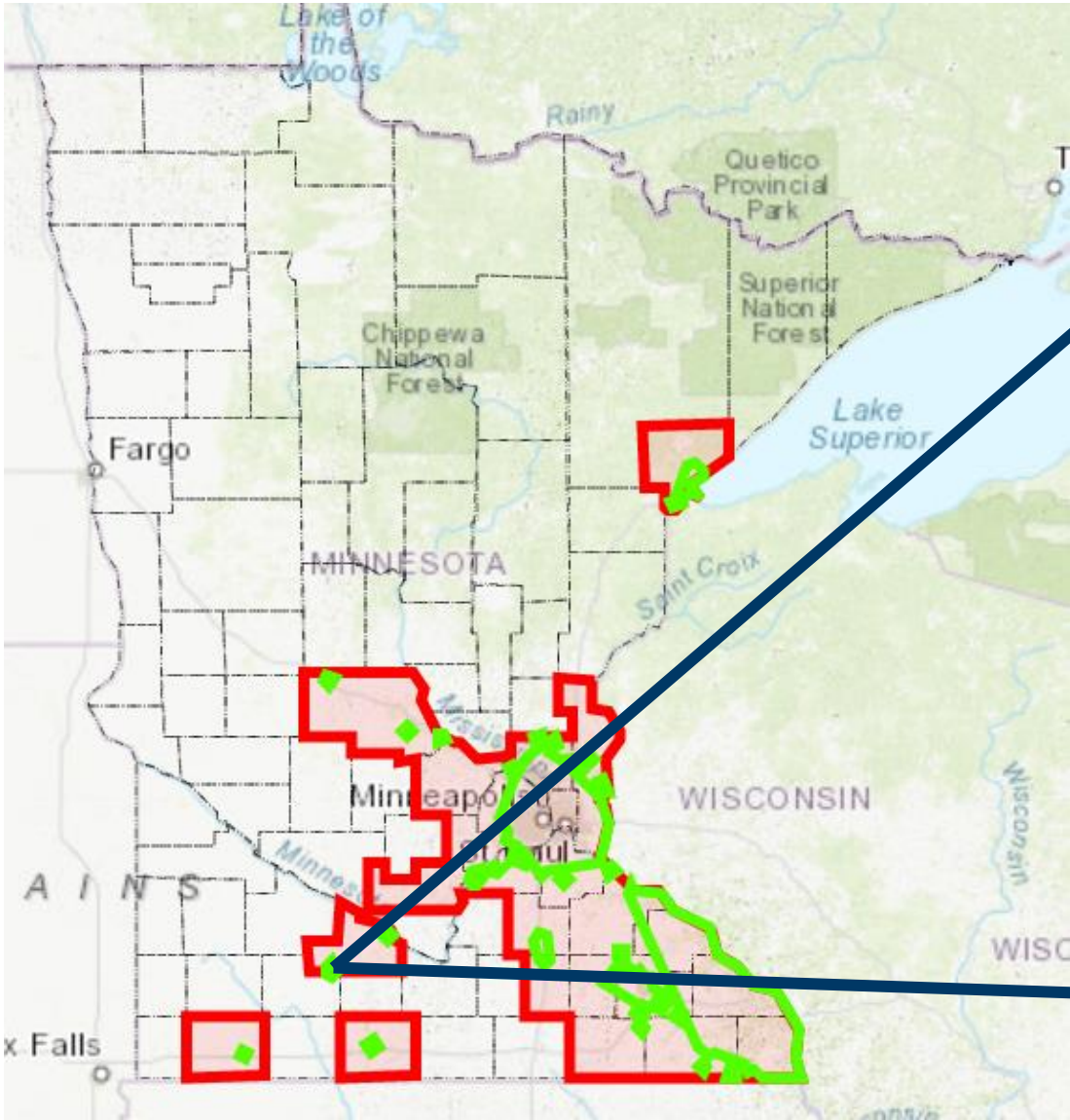
EAB Distribution and Spread

mda.state.mn.us/eabstatus



EAB Distribution and Spread

mda.state.mn.us/eabstatus



EAB Distribution and Spread



MDA
CERTIFIED
FIREWOOD

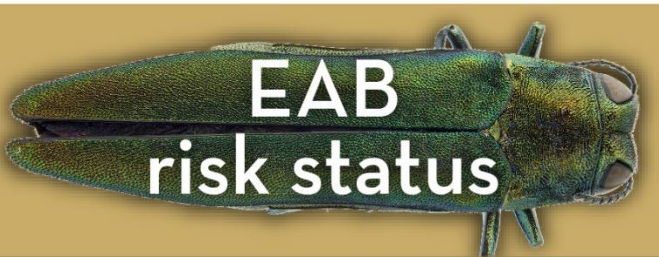


**The only safe to move
firewood in Minnesota**



Stop the spread of insects that destroy
our trees. Buy only heat-treated MDA
Certified Firewood.

 UNIVERSITY OF MINNESOTA



EAB
risk status

LOW ACTIVITY

[CLICK FOR INFORMATION](#)



DON'T MOVE FIREWOOD!

Emerald Ash Borer is in Martin County



EAB Distribution and Spread

GUIDELINES TO SLOW THE GROWTH AND SPREAD OF EMERALD ASH BORER

mi DEPARTMENT OF
AGRICULTURE

CONTENTS

GUIDELINES TO SLOW THE GROWTH AND SPREAD OF EMERALD ASH BORER

Background	4
Planning	7
Inventory	10
Monitoring	12
Treatments	15
Removal/Sanitation	19
Wood Management/Utilization	22
Replanting	25
Biological Control	27
Closing	29
Appendices	
1: How to Confirm and Report EAB	30
2: Detection Methods	32
3: Winter and EAB	39

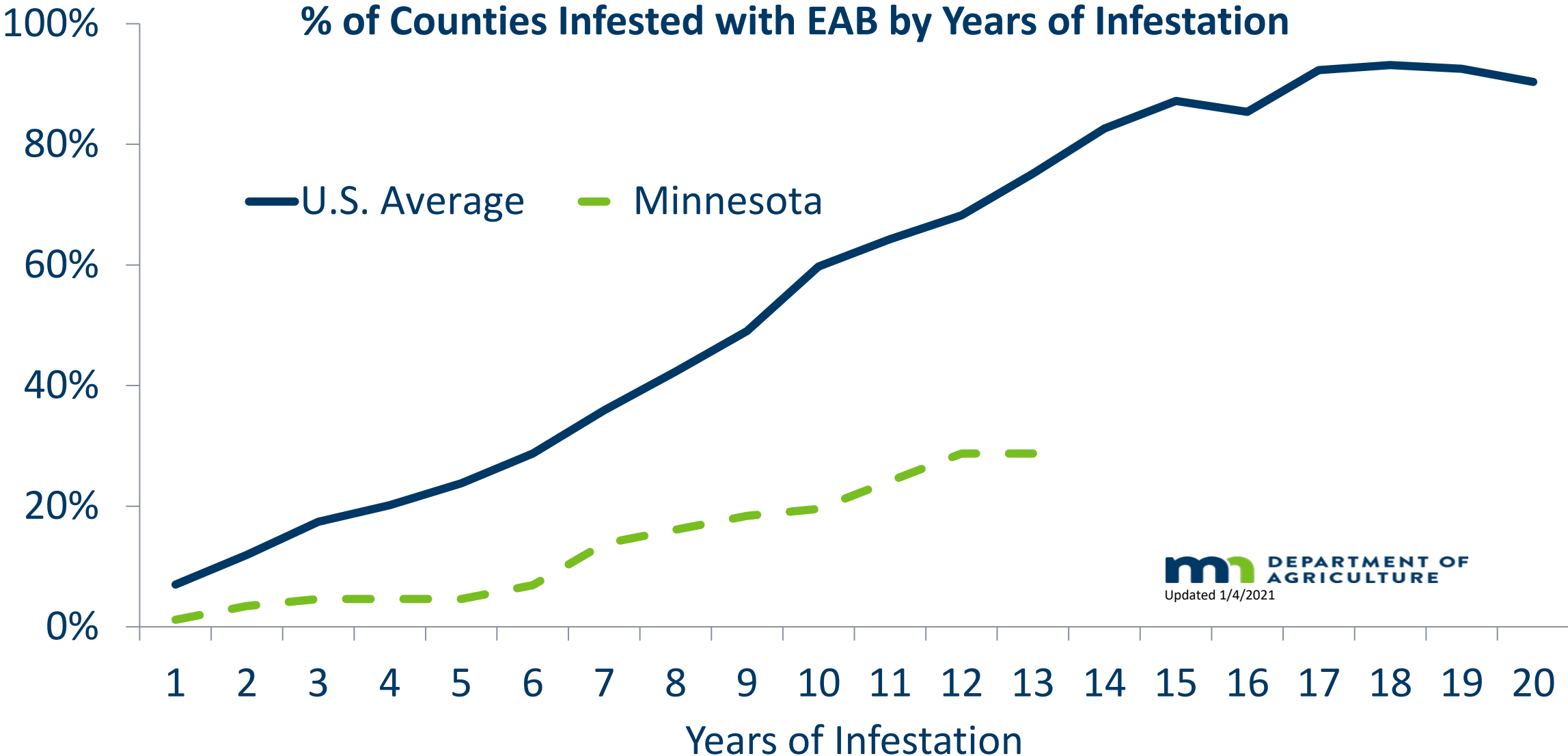
EAB Distribution and Spread

Fate of EAB-infested Trees

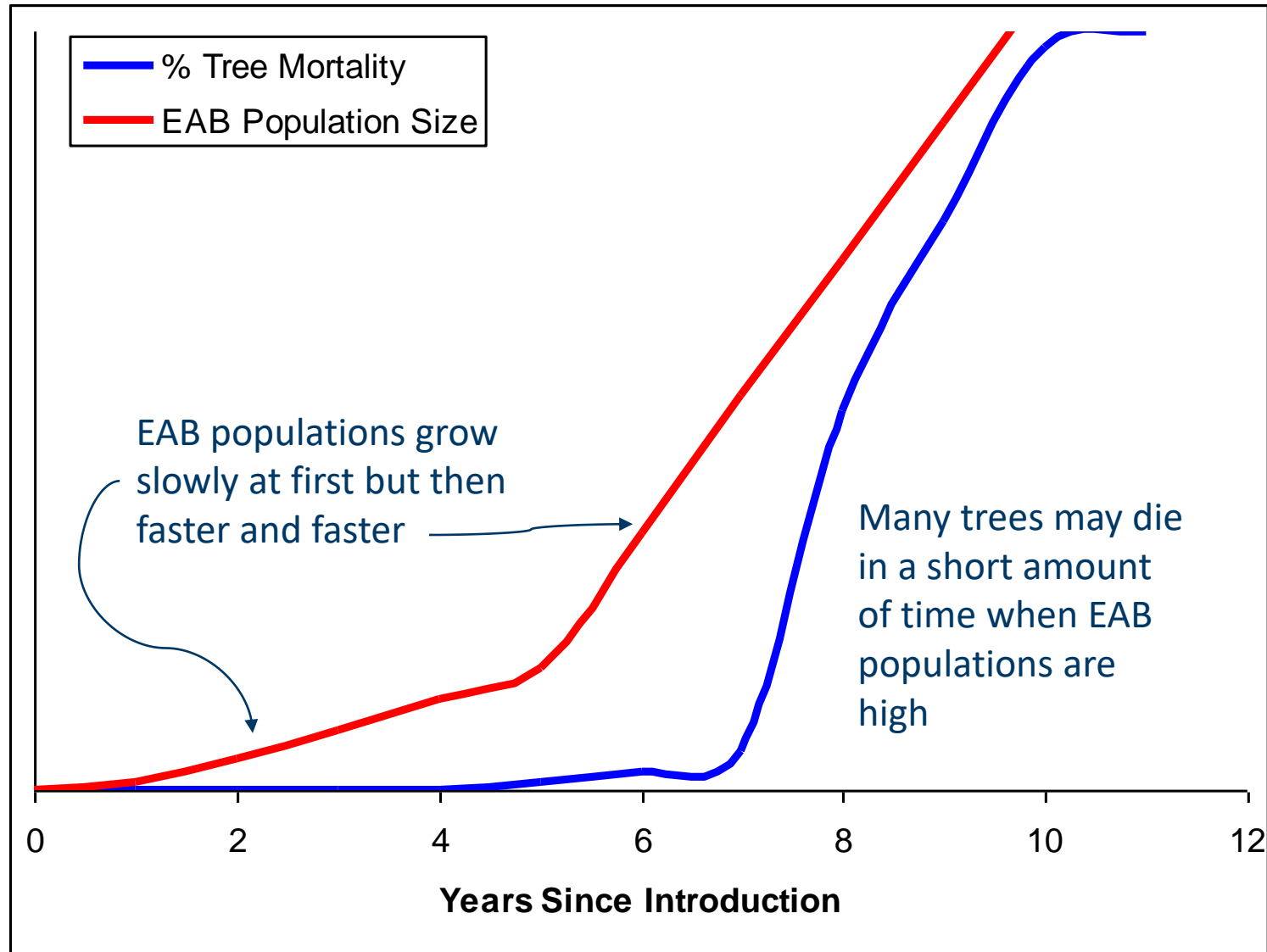
1. **Removed (before or after death)**
2. **Treated with insecticide**
3. **Die and fall apart**



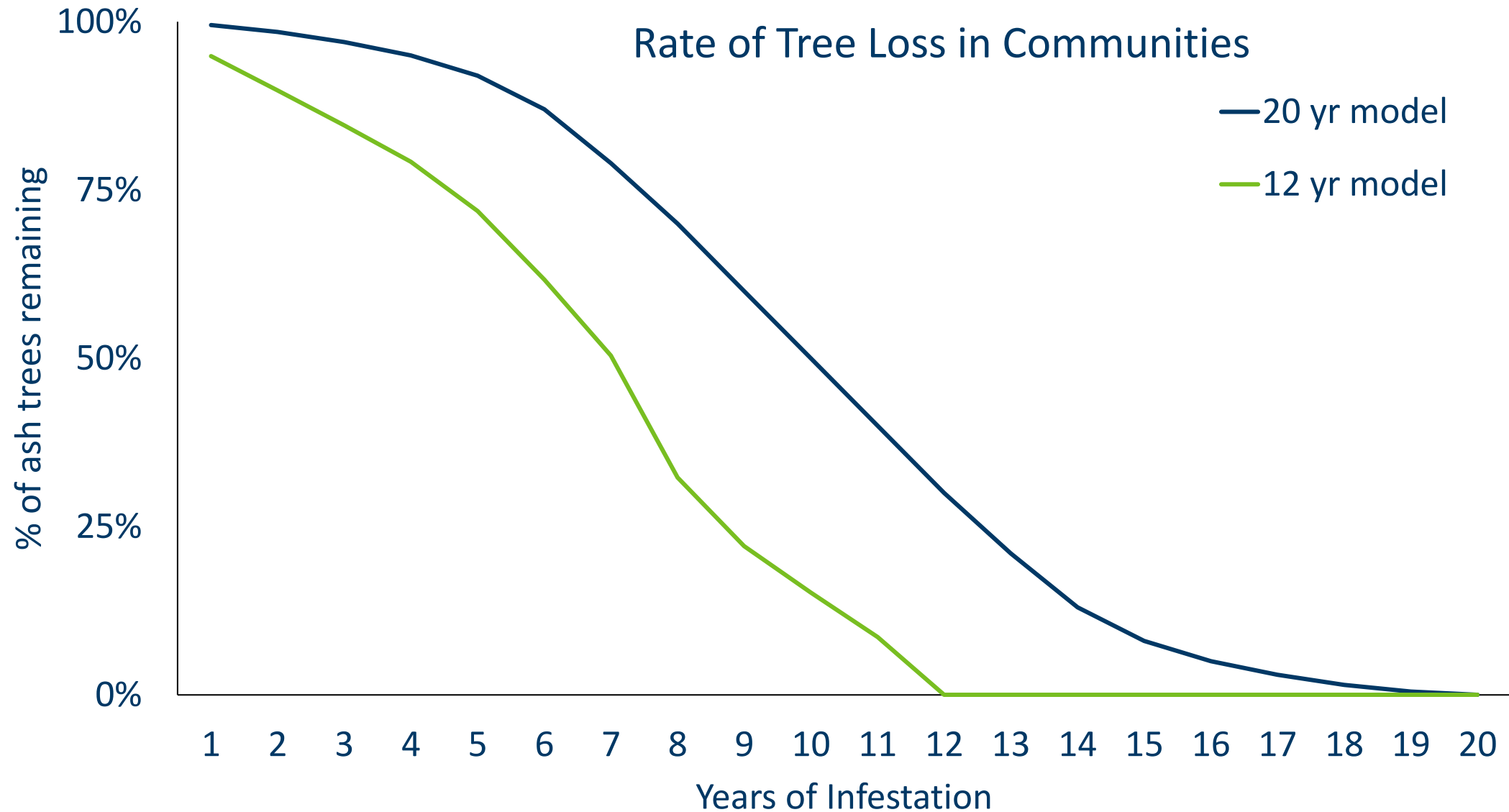
EAB Distribution and Spread



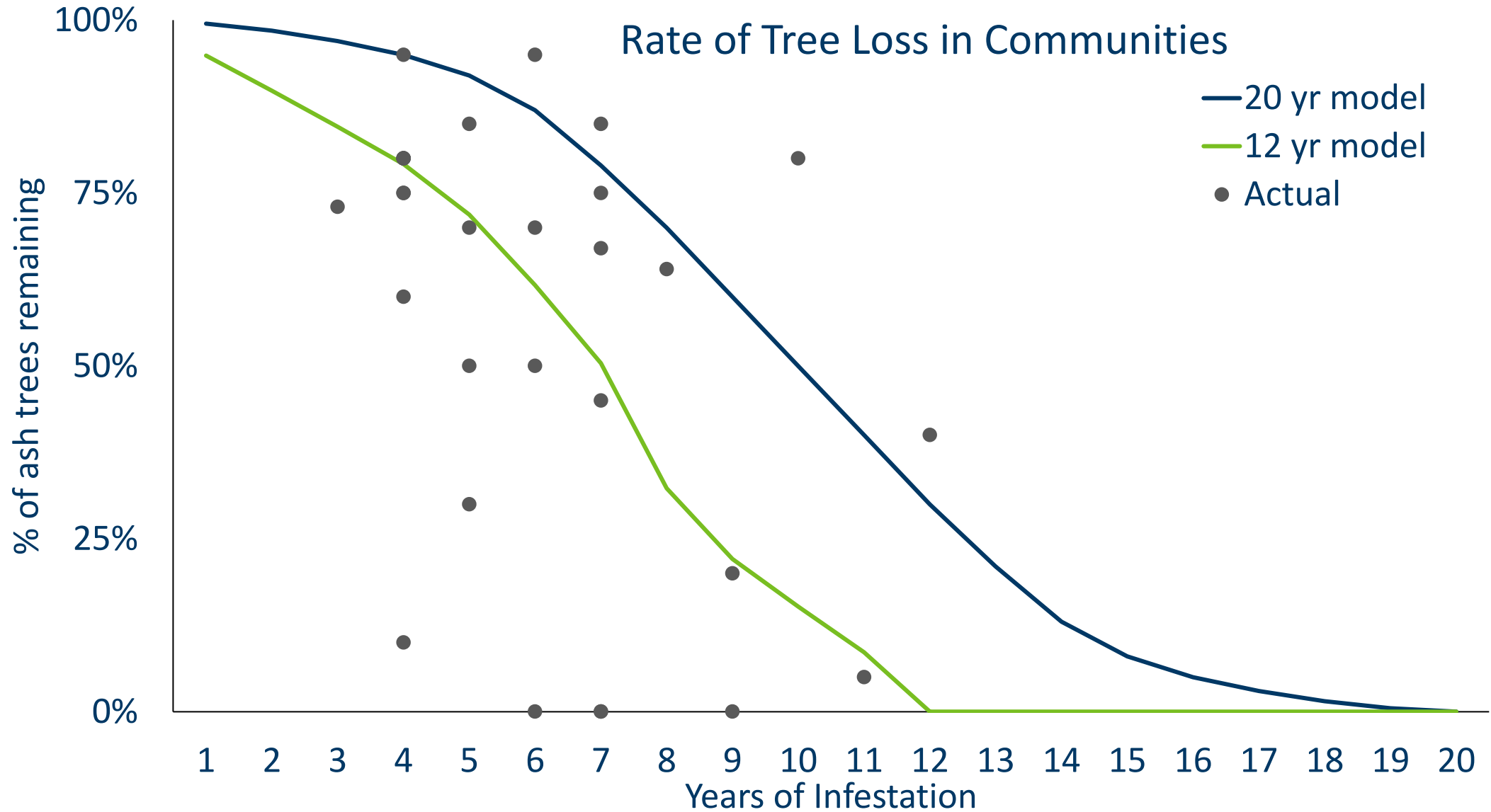
Rate of Tree Loss



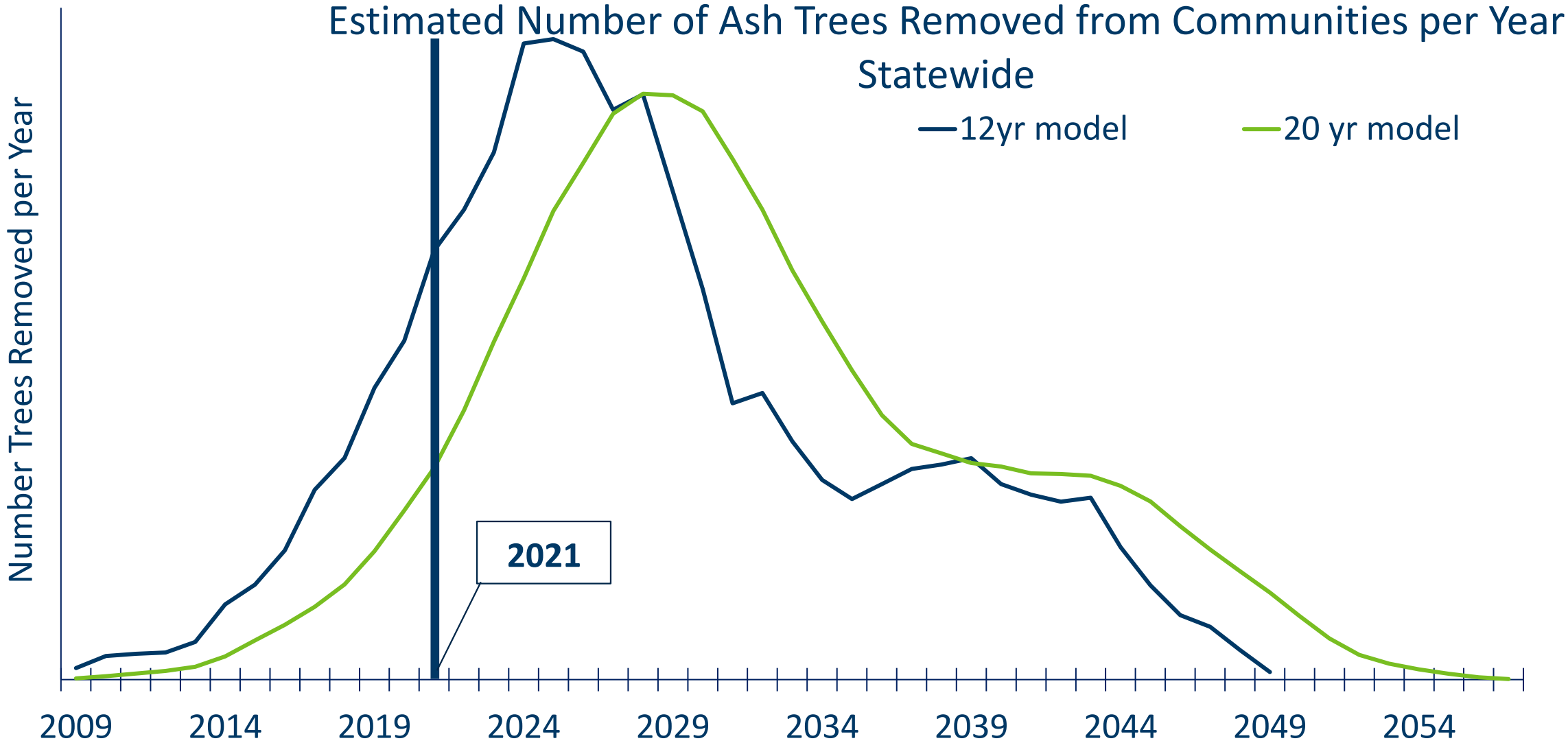
Rate of Tree Loss



Rate of Tree Loss



Rate of Tree Loss



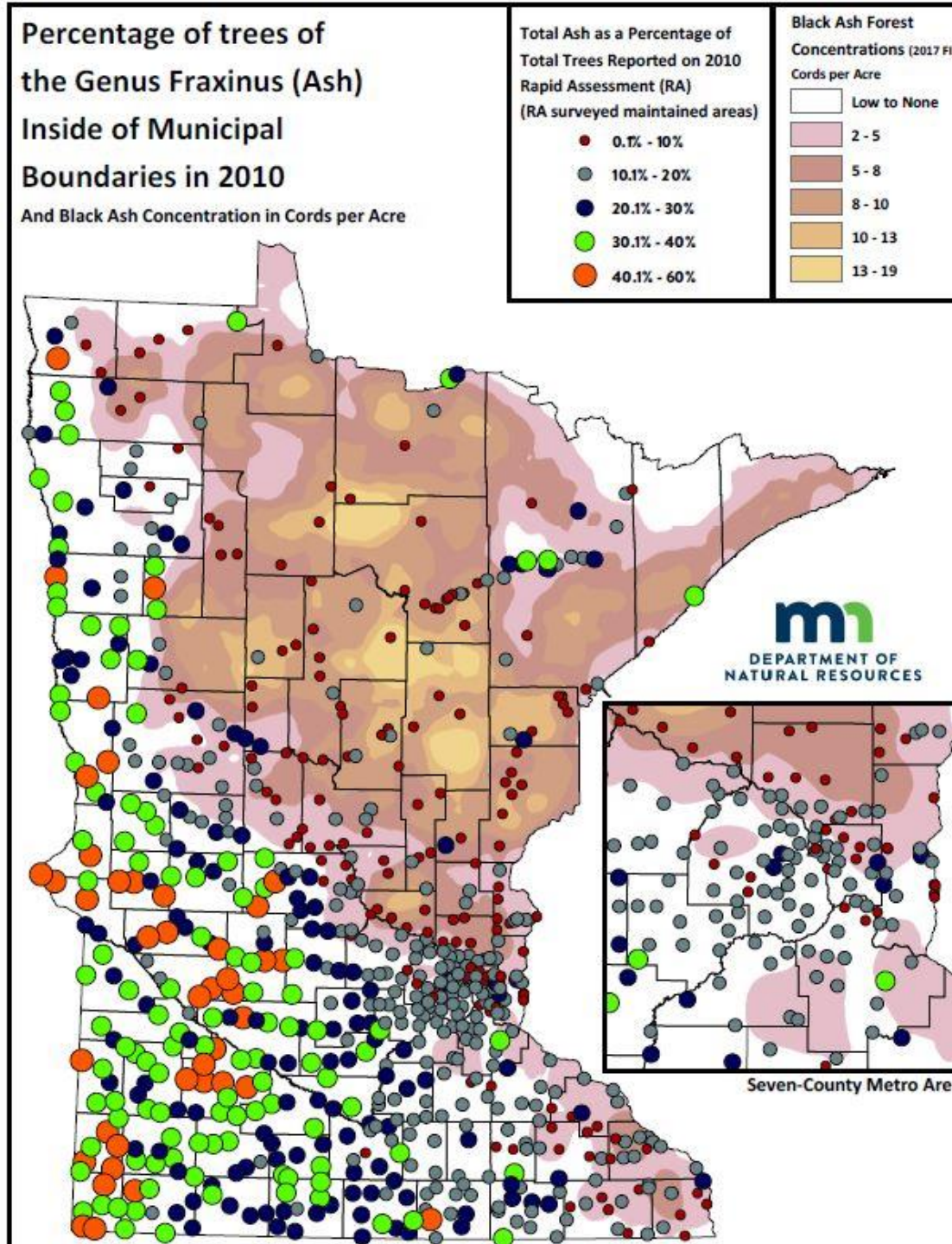


EAB: Community Forests and Ash Forests

Amy Kay Kerber | Forestry Legislative Affairs and Outreach Supervisor

Ash in Minnesota

- Nearly 1 billion ash trees
- 1-in-5 community forest trees are ash
 - Up to 60% ash in some communities
- EAB kill rate over 99%
 - Kills saplings down to 1" in diameter



Inventory

Management plans

Financial resources



Community Forest Resource Needs



Inventory

Management plans

Treat and remove ash

Plant diverse replacement trees

Educate residents

Help homeowners

Recent Community Support



2018 Federal \$109,000

2019 General Fund \$700,000

2019 LCCMR \$300,000

2020 Bonding \$1 million

2020 LCCMR \$3.5 million, recommended

Ash Forests

1 million acres of ash forest
statewide

Ash 2nd most common tree

Minnesota has more ash than
any other state



Ash Forest Management



Management Goals

- Keep forests as forests
- Maintain hydrology
- Minimize habitat & biodiversity loss
- Harvest to treat sites
- Reforest to new species

Existing Markets

- Energy for community ash
- Firewood, pallet, & paper for ash forests

More ash available than markets can use

- Innovate market solutions needed
- Plan for ash waste



Community assistance is critical

Ash use and waste disposal solutions
are needed

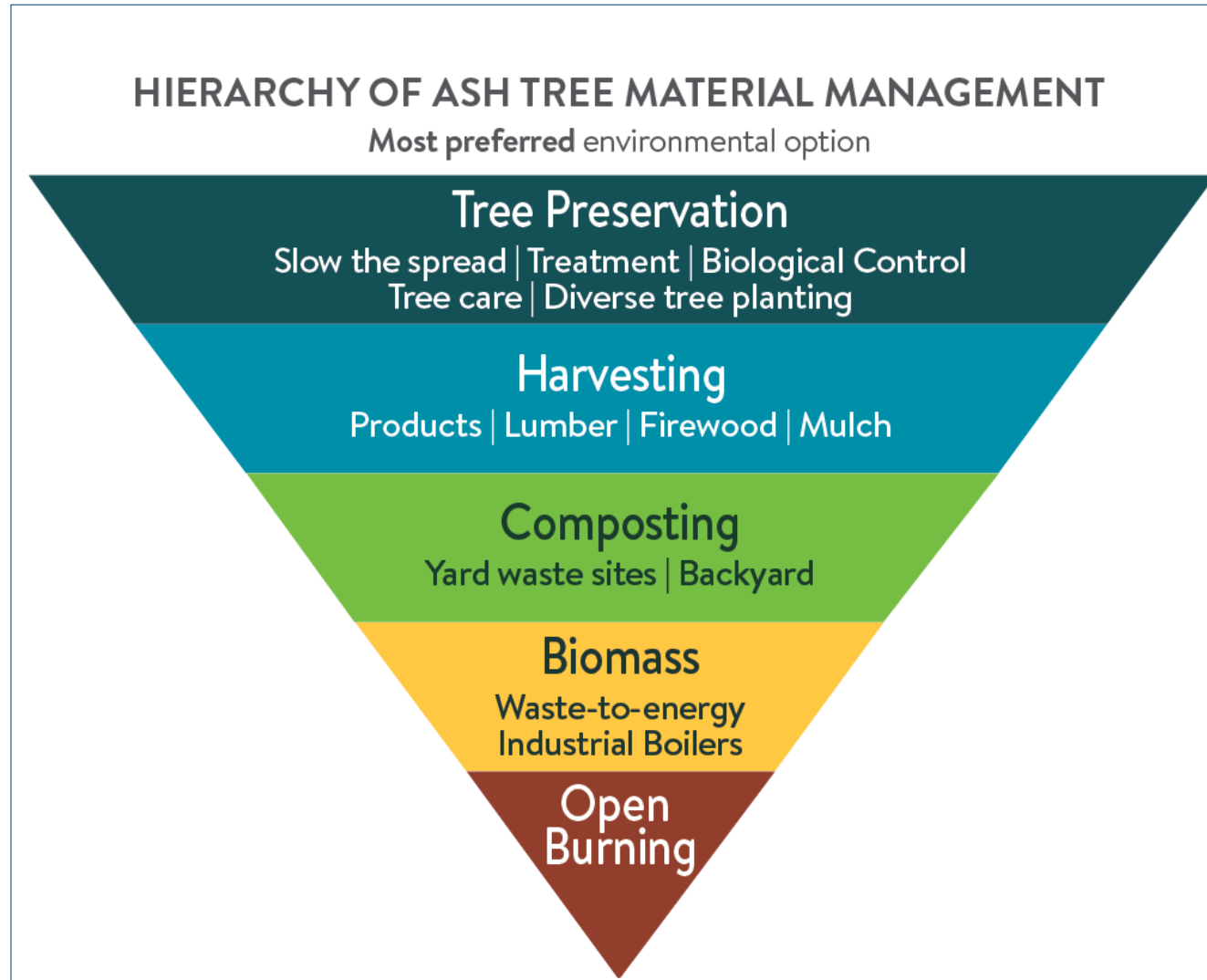




Emerald Ash Borer Wood Management

David Benke | Director, Resource Management and Assistance Division

Wood Waste: Where will it all go?



Options for managing EAB-infested wood

Timber harvesting



Mulching/Composting



Biochar



Wood products



Biomass heating/energy



Recreational fires



MPCA Ongoing activities

- Coordinate with metro counties to include wood waste management and EAB mitigation in next round of the Solid Waste Metro Policy Plan
- Monitor innovative and developmental uses/management for wood waste including:
 - Community based programs that utilize wood to make products
 - Biochar
- Support existing wood waste management infrastructure at composting facilities, biomass facilities and for use as wood fuel or firewood.
- Coordinate with partner agencies to support efforts to slow the spread and reduce harmful impacts of EAB

Recommendations

- Strengthen statewide coordinated effort to slow the spread and delay costs
- Provide financial and technical assistance to communities
- Develop markets for making products from ash and end-of-life management
- Develop statewide approach to utilize ash and for disposal of ash waste



Thank You!

Emerald Ash Borer Interagency Team