

STATE CORRECTIONS SAFETY AND SECURITY

The Department of Corrections (DOC) manages and operates 11 prisons across the state. These complex facilities provide housing, food services, healthcare, treatment, visitation services, spiritual services, programming, and more for between 7,500 to 9,000 incarcerated individuals. They are the workplaces for over 4,000 state employees that serve in some of the most challenging and dangerous positions in state government. The facilities must ensure health, safety, and security of everyone in them.



Continuity of Operations Plan (COOP) Capacity

\$190,000 per year ongoing to fund the Continuity of Operations Plan (COOP) Coordinator position and for related software requirements to ensure uniformity across systems in this planning. COOP plans are essential and mandatory for each agency.



Food Services Staff Stabilization

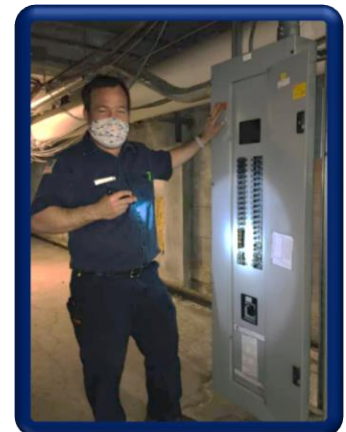
\$664,000 in FY24, \$802,000 in FY25, and \$1.164 million per year ongoing to hire food services staff and ensure adequate staffing levels and compensation in this critical service area across all facilities. Correctional food services area is drastically understaffed, and the provision of which is central to the health and safety of incarcerated individuals and DOC staff. Capable staff replacement has not kept pace with retirement and turnover due to the low pay scale range in this demanding service industry.

Mail Distribution Security

\$478,000 per year ongoing to implement updated security around sorting and distributing operations for all incarcerated individuals' incoming mail. There have been staff assaults, altercations between incarcerated individuals, and medical issues due to substances and items delivered via mail.

Critical Plant Operations

\$870,000 in FY24, \$1 million in FY25, and \$1.4 million ongoing for physical plant operations, including critical components and staff for ongoing



maintenance and technology repair to upgrade security systems. This request will provide the ability to complete, manage, and/or implement physical plant operations activities each fiscal year including hiring electricians, and other maintenance staff. Deferred maintenance has caused more deterioration and increased the need for these investments.

Secure Transport Bus

\$300,000 one-time to replace a secure bus to transport incarcerated individuals between facilities and for new admissions.

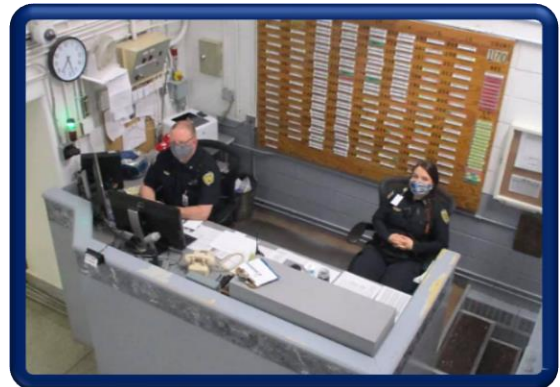


Safety Administrator

\$124,000 per year ongoing to hire a Safety Administrator for the Lino Lakes Minnesota Correctional Facility. The position works daily on issues related to environmental, safety, and health of the incarcerated population and DOC staff. Lino Lakes had a Safety Administrator, but the job was eliminated due to layoffs in 2018.

Emergency Operations

\$159,000 per year ongoing to hire an Emergency Operations Supervisor to lead, facilitate, and supervise emergency response teams, routine drills in all facilities, and supervise the 15 canine handlers across the agency. Currently, the coordination of emergency management across the DOC is fragmented. To remedy this, the DOC is requesting a new position to lead, facilitate, and direct supervision to all emergency response teams.



Emergency Management Drills

\$178,000 in FY24 and \$200,000 in FY25 ongoing to plan and support emergency management drills within correctional facilities. The success and safety of our facilities is its ability to respond to all types of critical incidents. The drills provide the needed opportunity to train all staff prepared to manage protracted incidents.