

## Minnesota Coalition *for the* Homeless

**\$40  
Million**

2024-25

**\$70  
Million**

2026-27

*ongoing*  
**Investment to the  
Emergency Services  
Program**

The Emergency Services Program (ESP) is the state's most flexible source of funding that allows organizations and local communities to meet the needs of people experiencing homelessness. ESP provides funding that supports shelter operations, outreach, motel vouchers and other key resources and services to support families, individuals, and seniors experiencing homelessness. Investing in ESP helps people transition to a permanent home.

**HF444 | SF**

"The shelter has really saved my family. My kids get to school every day and they don't even know this is a shelter. It's just a safe place until we get into our new home."

**Minnesotans of Color  
are approximately**

**10X**

**more likely to  
experience  
homelessness than  
white Minnesotans.**

**On any given night**

**20,000**

**Minnesotans are  
experiencing homelessness  
and up to**

**50,000**

**Minnesotans do throughout  
the year**

**Unsheltered  
homelessness  
increased by**

**62%**

**between 2015 and 2018**

"They can only do six or nine beds out here. My children took up a big portion of the beds. There's just not enough, period."

***Shelter saves lives.  
Housing ends homelessness.***

Data provided by the Institute for Community Alliances while utilizing the Point in Time Count, the Wilder Foundation, Housing Inventory Count, & Homeless Management Information System (HMIS)

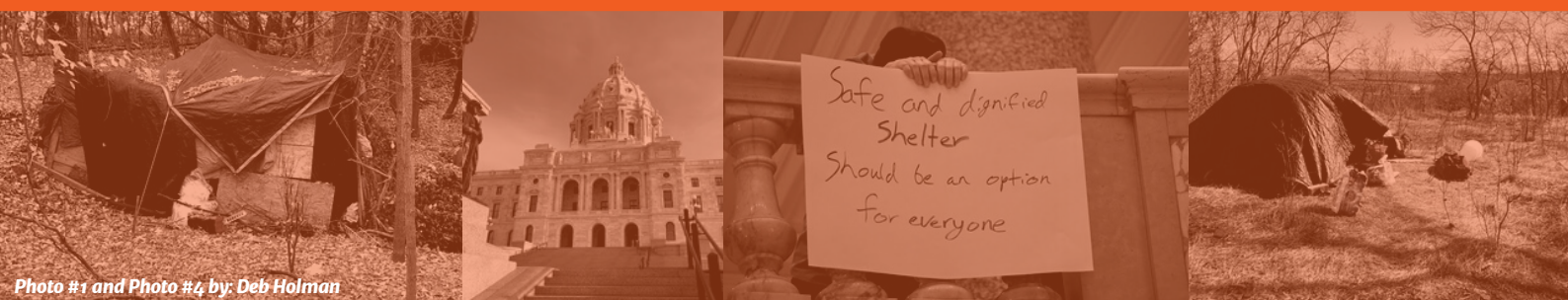


Photo #1 and Photo #4 by: Deb Holman

at minimum  
**80 OF 87  
COUNTIES**

lack enough shelter  
spaces for individuals  
and families  
experiencing  
homelessness

MCH has identified  
**86 projects**  
with estimates of  
\$200 million needs in  
funding

These investments  
would  
create/preserve  
space to serve  
**3468 children,  
youth, individuals  
& families**

"We also do not have  
adequate, safe shelters in  
our area to meet the  
needs."

"The shelter has really  
saved my family. It's just a  
safe place until we get into  
our new home."

**MORE INFO:**



# Minnesota Coalition *for the* Homeless

## **\$200 Million**

*one-time*

Investment to expand and  
preserve shelter spaces

Shelters in Minnesota lack ongoing state funding for capital needs. Funding the preservation and creation of shelter is key to providing safe, welcoming, accessible, and dignified spaces for people experiencing homelessness all across Minnesota. We support investments into Shelter Capital to improve our current shelters and generate new models to meet the need such as those that are culturally responsive, gender affirming, accessible, and are low barrier; shelter is the first step to finding permanent housing for families, individuals and seniors experiencing homelessness.

**HF444 | SF**

**SHELTER CAPITAL**

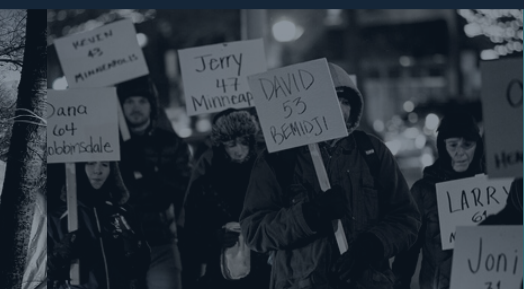
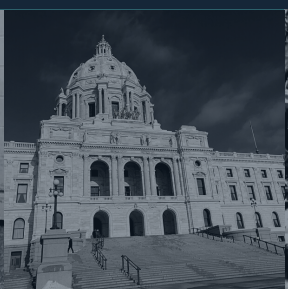
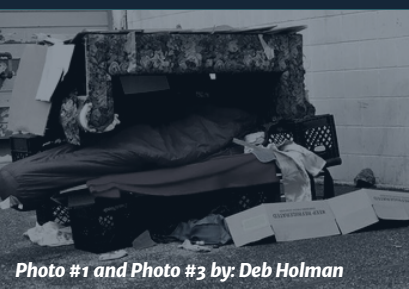


Photo #1 and Photo #3 by: Deb Holman