

H.F. 1229 WAYZATA BLVD/ ZARTHAN AVE/16TH STREET IMPROVEMENTS

Improving connections to affordable housing, commercial land uses and job centers.

📍 **APPLICANT:**
City of St. Louis Park

📍 **AREA:**
North central St. Louis Park

📍 **CITY WHERE PROJECT LOCATED:**
St. Louis Park

📍 **COUNTY WHERE PROJECT IS LOCATED:**
Hennepin

💰 **REQUESTED AWARD AMOUNT:**
\$4,050,000

💰 **TOTAL PROJECT COST:**
\$8,100,000



This project is needed to repair existing infrastructure, remove barriers to access active transportation, transit, affordable housing, commercial and job centers. This project will:

1. Increase transportation access to under-served populations
 - a. The area is home to around 839 affordable housing units
 - b. 25.7 percent of residents in the area identified as people of color in the 2020 census. This is high when compared to 22.8 percent citywide.
 - c. Planned bicycle and pedestrian infrastructure will significantly improve multi-modal experience in the area.
 - d. This project will create walking, biking and transit connections for over 16,000 employees in the area.
2. Improve neighborhood livability and community connection
 - a. The new roundabouts at Zarthan Ave/ 16th St and Gamble Dr/ 16th St are expected to reduce fuel consumption and reduce vehicle emissions by 25%.
 - b. Air quality will be improved by safer access to walking, biking, and transit.

3. Encourage walking, biking, transit and regional connection.
 - a. Existing roadway design prioritized vehicle traffic and did not consider other users.
 - b. Three Rivers has proposed a north south regional connection is adjacent to Wayzata Blvd. Connecting the Luce line Trail, North Cedar Lake trail and South Cedar Lake trail.
 - c. The city's bicycle plan includes a multi-use trail connection along all road segments which will fill in gaps in the city's network.
 - d. Planned bicycle and pedestrian infrastructure will significantly improve multi-modal experience in the area.

These roadways were last constructed over 30 years ago and are in need of pavement replacement and modernization.

The total project cost is \$8.1 million. The city is requesting 50% of the project cost in state funds and will match the remainder with local funds. This project is included in the city's capital improvement plan in 2027.

Public purpose:

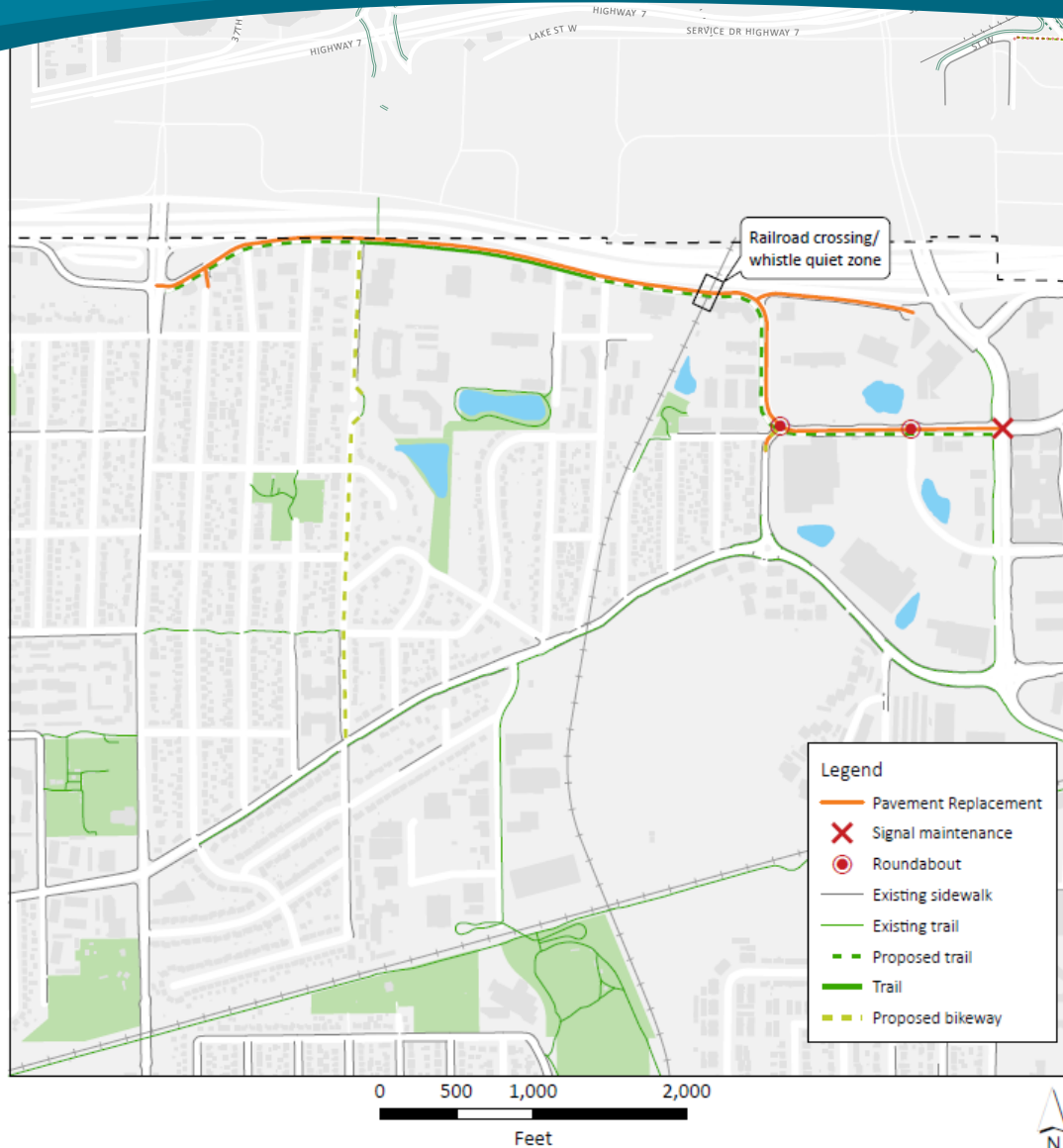
These roadways provide regional movement of goods and connections to commerce. They're currently used by approximately 13,000 to 21,500 vehicles per day, with 69 to 79% of that traffic coming from outside of St. Louis Park. Providing local and regional connections to I-394 and TH100. The project infrastructure reconstruction and multimodal improvements will significantly contribute to a state of good repair, reduce travel delays, and create connections.

Project benefits:

- Repairs and modernizes roadways with regional and local significance.
- Enhances accessibility to affordable housing, jobs, and commercial land uses.
- Advances the city's goal of carbon neutrality by 2040
- Removes barriers for sustainable, non-motorized transportation
- Improves safety for pedestrians and bicyclists.
- Supports equitable and affordable transportation alternatives
- Improves air quality for surrounding neighborhoods

WAYZATA BLVD/ ZARTHAN AVE 16TH STREET IMPROVEMENTS

This area of the city has a mix of land uses. Including affordable rental housing, office buildings, restaurants, and shopping. The road reconstruction and trail construction will help residents, employees, and visitors make their way around the city safely.



Project improvements :

- Replacement of 1.3 miles of roadway pavement
- Construction of 0.9 miles of new multi-use trail
- Construction of two roundabouts located at Zarthan Ave/ 16th St and Gamble Dr/ 16th St.
- Crosswalk enhancements for people walking and rolling, including user-actuated flashing beacons
- Operational and access management changes at intersections to improve efficiency and safety
- Modification of existing sidewalks to meet ADA requirements and operation needs
- Enhanced streetlighting in conflict areas
- Public utility repair and replacement

Roadway segments included :

- Wayzata Blvd from Louisiana Ave to Zarthan Ave
- Zarthan Ave from Wayzata Blvd to 16th Street
- 16th Street from Zarthan Ave to Park Place Blvd

Prepared by: