

Office of the Minnesota
Secretary of State

Budget Proposals FY2024-2025

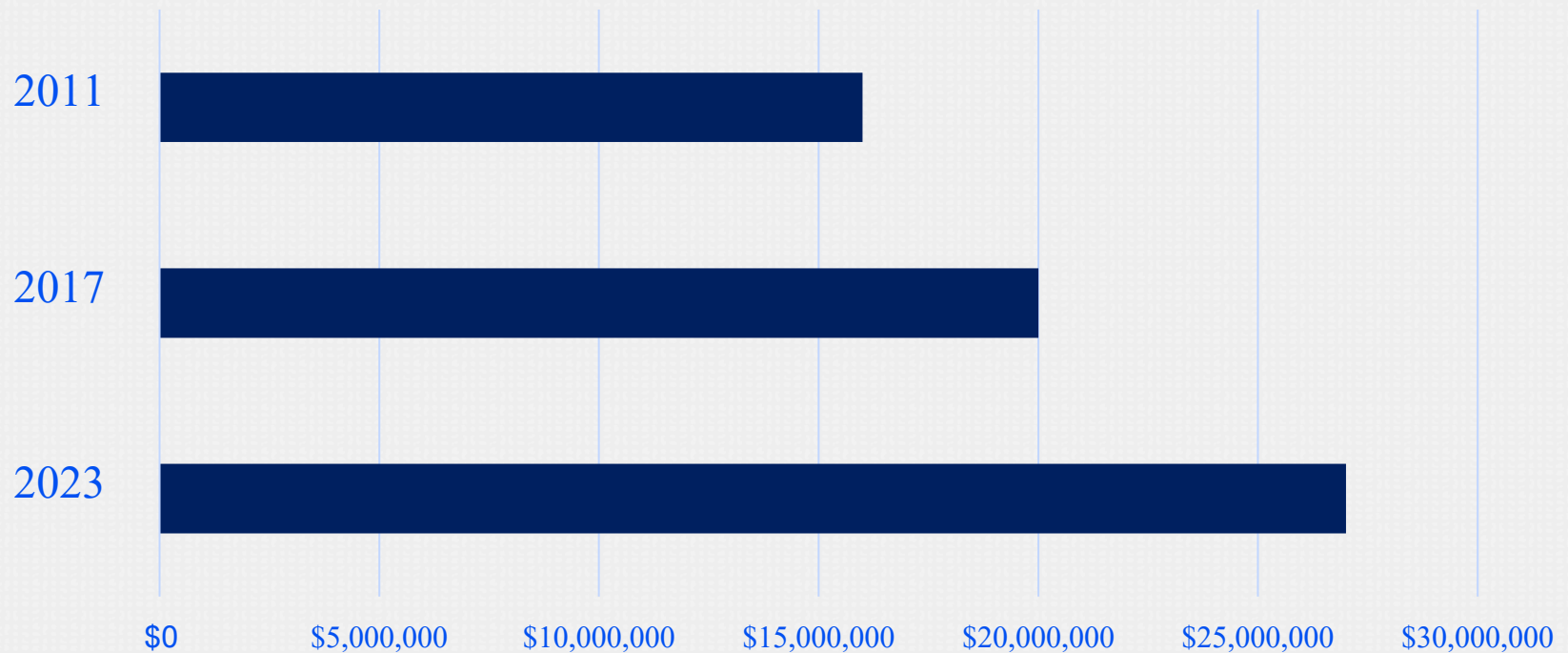
Contributor to the General Fund

\$27 million per biennium (net)

\$13.5 million per year

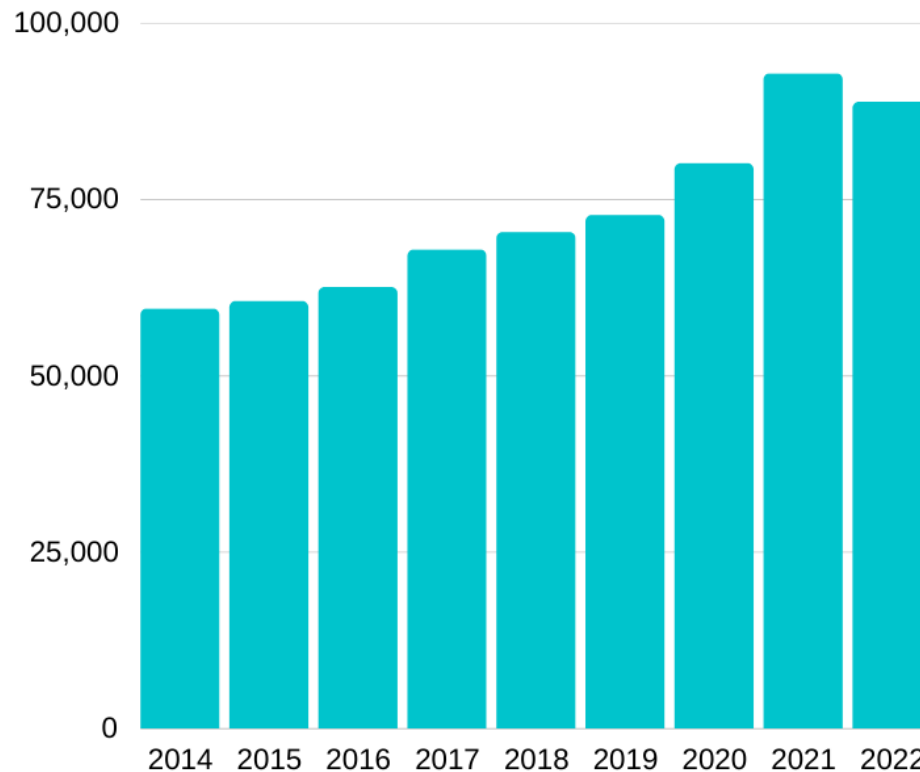


Millions Contributed (net) to State General Fund Per Biennium



Business Services

New Business Entities Filed with OSS By Year



Business Services

- **New business filings in 2022: 90,141**
- **Total business filings in 2022: over 645,074**
 - *Including: Web, mail, and counter filings*

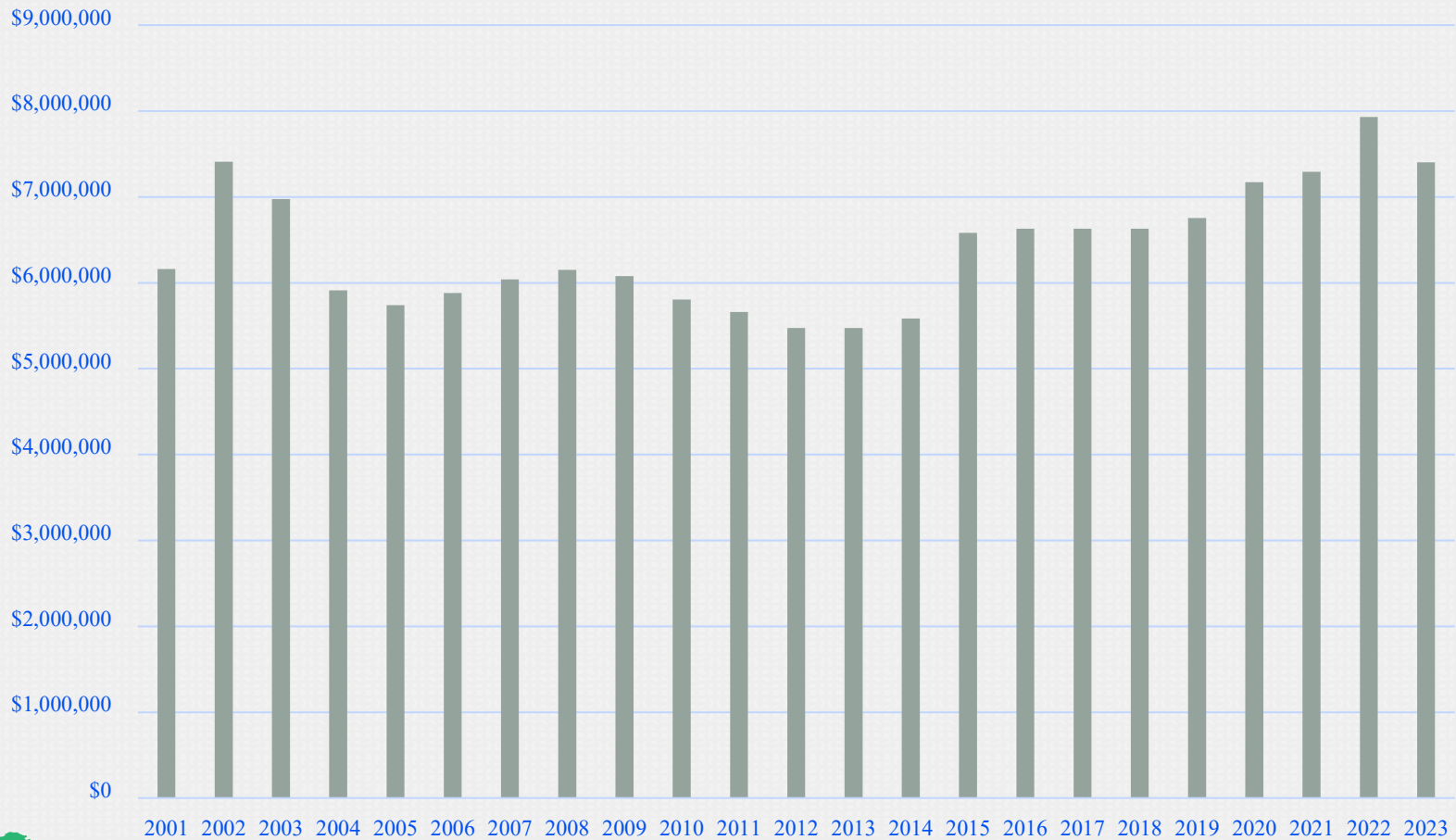
Operating Adjustment

Maintaining Current Services

Change Item Title: Operating Adjustment

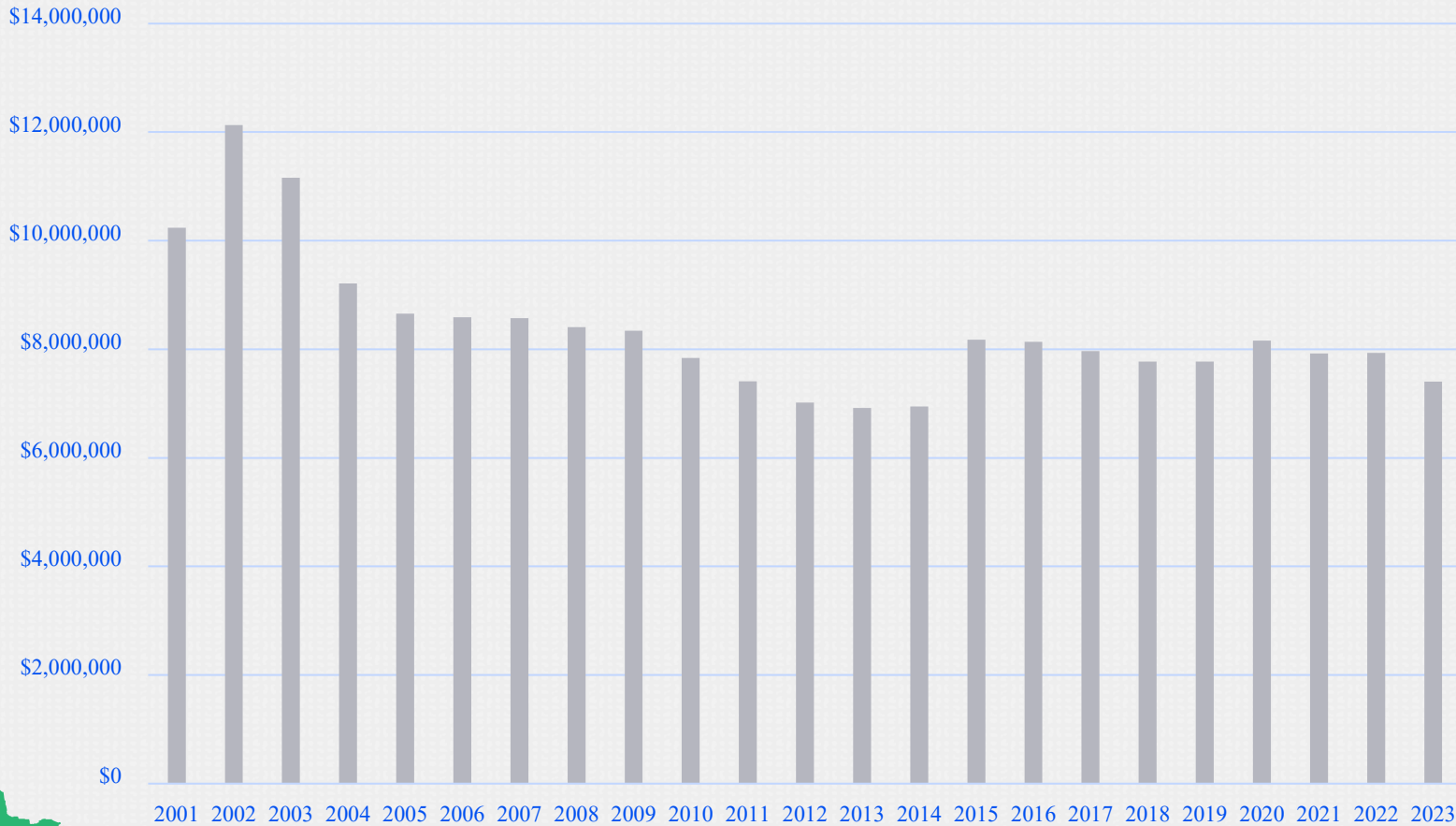
Fiscal Impact (\$000s)	FY 2024	FY 2025	FY 2026	FY 2027
General Fund				
Expenditures	316	448	316	448
Revenues	0	0	0	0
Other Funds				
Expenditures	0	0	0	0
Revenues	0	0	0	0
Net Fiscal Impact = (Expenditures – Revenues)	316	448	316	448
FTEs	0	0	0	0

General Fund Operating Appropriation



Office of the Minnesota
Secretary of State

General Fund Operating Appropriation Inflation Adjusted



Office of the Minnesota
Secretary of State

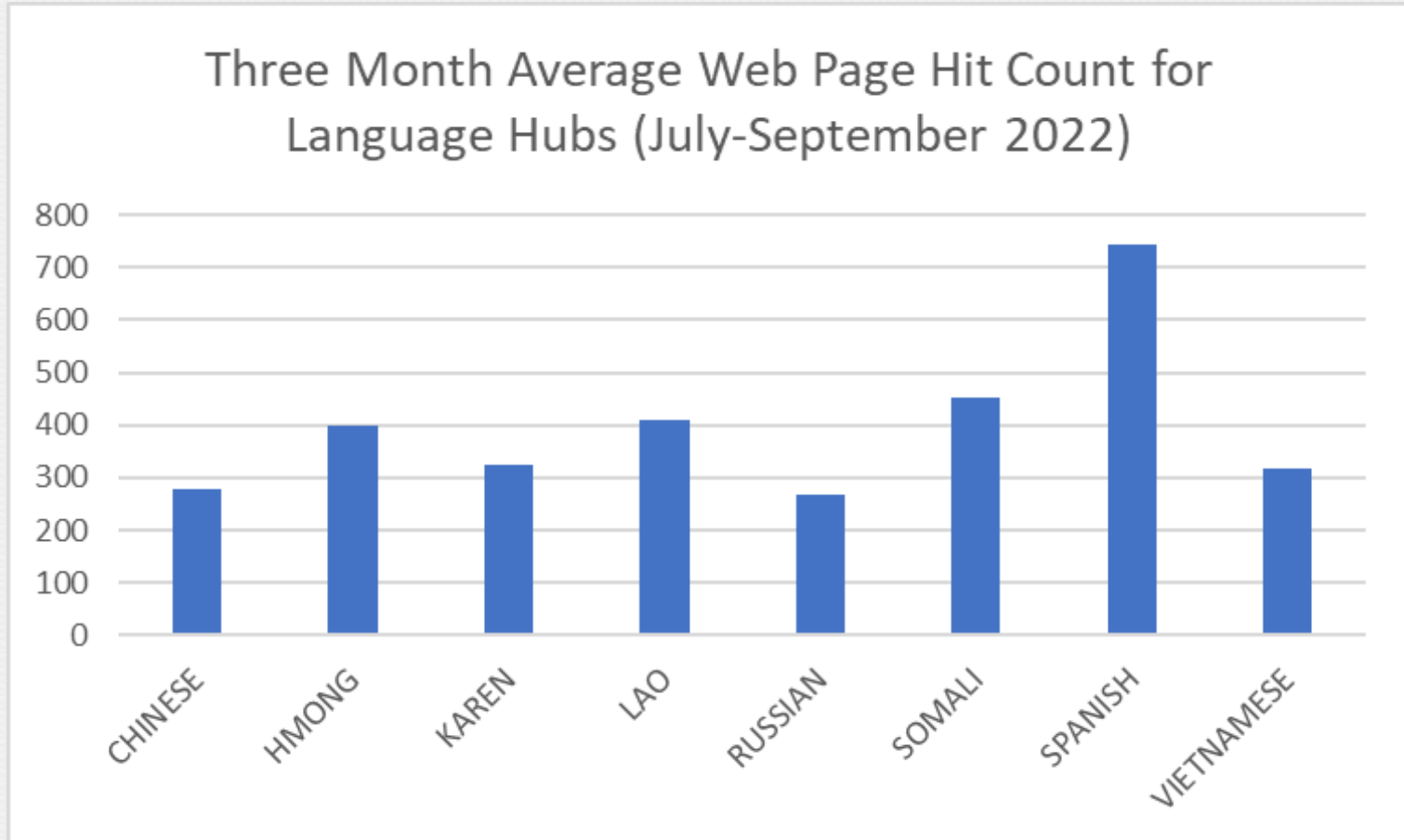
Business Services Budget Request

Expanding Business Services Customer Communication and Outreach

Change Item Title: Expanding Business Services Customer Communication and Outreach

Fiscal Impact (\$000s)	FY 2024	FY 2025	FY 2026	FY 2027
General Fund				
Expenditures	128	108	108	108
Revenues	0	0	0	0
Other Funds				
Expenditures	0	0	0	0
Revenues	0	0	0	0
Net Fiscal Impact = (Expenditures – Revenues)	0	0	0	0
FTEs	1	1	1	1

Business Services



Business Services Budget Request

Enhancing OSS Physical Security

Change Item Title: Enhancing Office Physical Security

Fiscal Impact (\$000s)	FY 2022	FY 2023	FY 2024	FY 2025
General Fund				
Expenditures	200	200	200	200
Revenues	0	0	0	0
Other Funds				
Expenditures	0	0	0	0
Revenues	0	0	0	0
Net Fiscal Impact = (Expenditures – Revenues)	200	200	200	200
FTEs	0	0	0	0

Safe at Home Budget Requests

Responding to Safe at Home Participant Growth and Increased Costs

Change Item Title: Costs Associated with Safe at Home Division Growth

Fiscal Impact (\$000s)	FY 2024	FY 2025	FY 2026	FY 2027
General Fund				
Expenditures	380	380	380	380
Revenues	0	0	0	0
Other Funds				
Expenditures	0	0	0	0
Revenues	0	0	0	0
Net Fiscal Impact = (Expenditures – Revenues)	380	380	380	380
FTEs	5	5	5	5

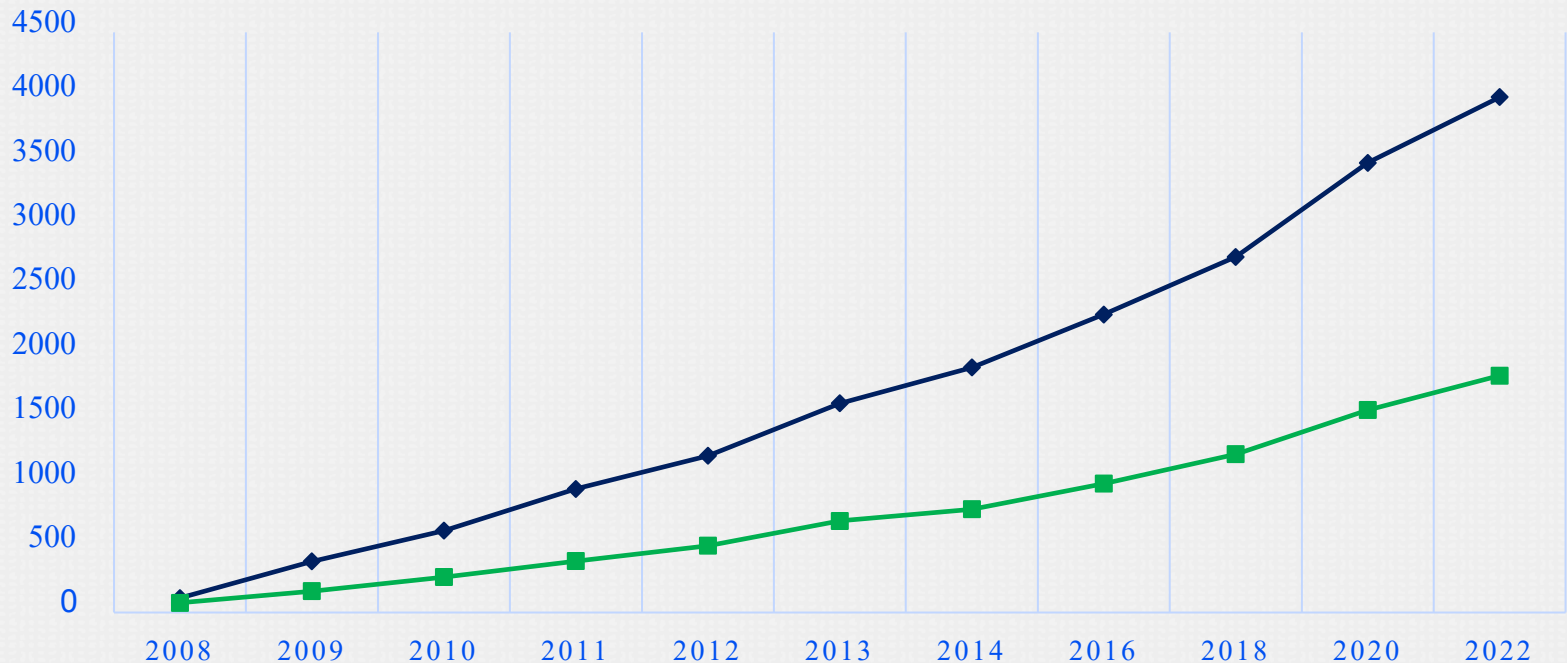


Safe at Home

Minnesota's Address Confidentiality Program

ACTIVE PARTICIPANTS AS OF DECEMBER 31

◆ Participants ■ Households

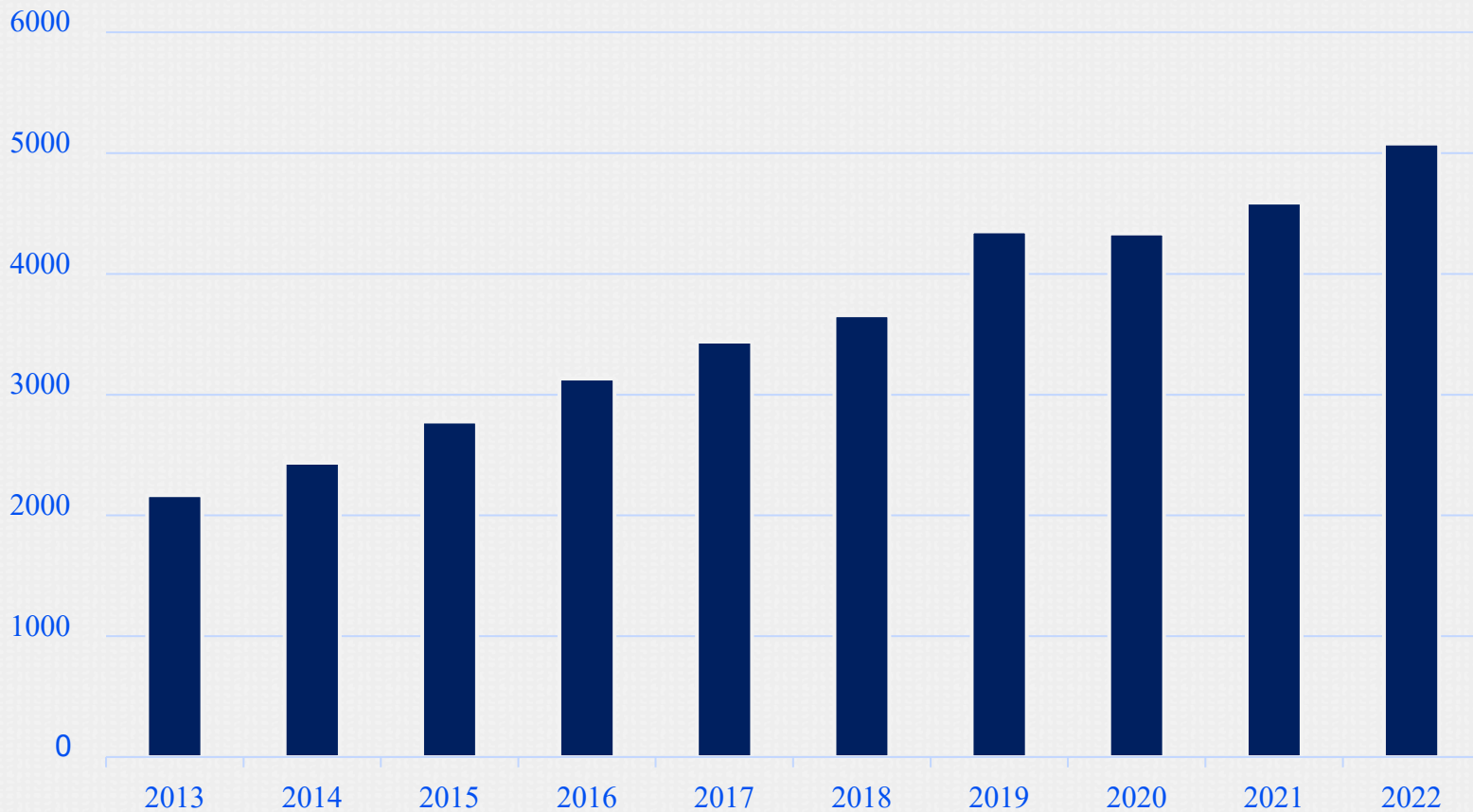




Safe at Home

Minnesota's Address Confidentiality Program

Total Served Per Calendar Year





Safe at Home

Minnesota's Address Confidentiality Program

	2018	2022	% Increase
Number of Applications Received	626	961	54%
Number of Renewal Applications Received	94	197	110%
Number of Active Participants as of December 31st	2,758	3,992	45%
Number of Active Households as of December 31st	1,228	1,837	50%
Number of Applicants and Participants Served	3,568	5,078	42%
Postage Costs	\$71,000	\$109,000	54%
Number of Outgoing Envelopes	86,988	111,535	28%
Number of Staff Designated to Perform this Work	5	5	0%

Customer Service and Staff Retention

Diversity, Equity, Accessibility and Inclusion Coordinator

Change Item Title: Diversity, Equity, Accessibility, and Inclusion Coordinator

Fiscal Impact (\$000s)	FY 2024	FY 2025	FY 2026	FY 2027
General Fund				
Expenditures	88	88	88	88
Revenues	0	0	0	0
Other Funds				
Expenditures	0	0	0	0
Revenues	0	0	0	0
Net Fiscal Impact = (Expenditures – Revenues)	88	88	88	88
FTEs	1	1	1	1

Questions

