



Science
Museum
of Minnesota®

Minnesota House Legacy Finance Committee
March 15, 2023

Representative María Isa Pérez- Vega (DFL, 65B)
Alison Rempel Brown, President and CEO
Jon Severson, Director of Government Relations

1

HF 1247

APPROPRIATION; SCIENCE MUSEUM OF MINNESOTA.

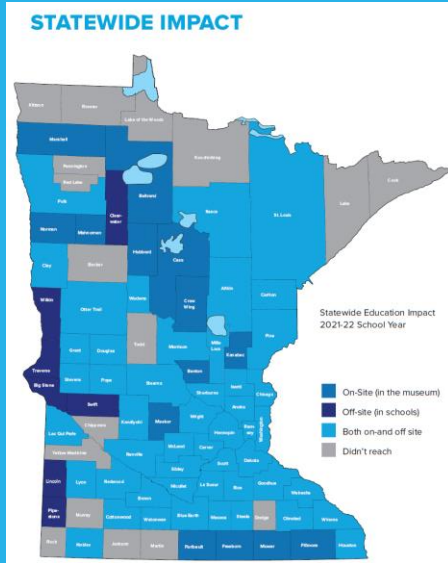
\$870,000 in fiscal year 2024 and \$870,000 in fiscal year 2025 are appropriated from the arts and cultural heritage fund to the commissioner of administration for a grant to Science Museum of Minnesota for statewide educational initiatives and community-based exhibits that preserve Minnesota's history and cultural heritage.



2

FY22 Statewide School Initiative

Served 70 of 87 Minnesota Counties



Since 2007, SMM has served:

- 1.6 million students
- 128,000 educators



3

STEM Education – Inspiring Minds



4

Science - The Center for Research & Collections



5

Community Engagement - Centering Equity



6

STEM Education – Automata Continuation

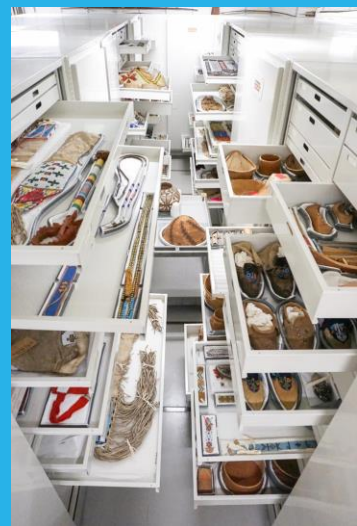
- **Project:** Develop and produce a kit-based engineering activity centered in cultural stories, distributed for free to 4th and 5th graders
- **Intended impact:** BIPOC students across the state, who historically experience exclusion from STEM narratives and curricula, will see themselves and their cultures represented in a multilingual STEM-focused classroom setting



7

Science Equity – Community Curators Program

- **Project:** Develop an object of the month exhibit program that highlights the voices and experiences of underrepresented voices and perspectives in the collections
- **Intended impact:** Museum visitors will see a variety of diverse, traditionally excluded voices. Marginalized communities will see that SMM is a place that values their stories. The community curators themselves will gain a platform to highlight their work and open and strengthen in-roads to engagement with the museum



8

Pine Needles Artist in Residence Program

- Project: Expand equitable access for artists and writers in our Pine Needles Artist in Residency (PNAiR) program who enhance the understanding of environmental sciences or natural history through their creative work and community.
- Intended impact: Transform the current PNAiR program by centering equitable access for artists who have not applied/participated due to limited resources or historical exclusion.



9

Thank You!



10