



Department of
Public Safety

Alcohol and
Gambling
Enforcement
Division



INTRODUCTION



The Alcohol and Gambling Enforcement division (AGE) regulates two highly visible industries that are constantly evolving.

Introduction



Our goals are to:

- Maintain a comprehensive view of both industries and all regulations at state and federal levels.
- Share resources with other agencies to promote efficiency.
- Provide investigative assistance to local units of government.

Introduction



Enforce Minnesota statutes related to gambling.

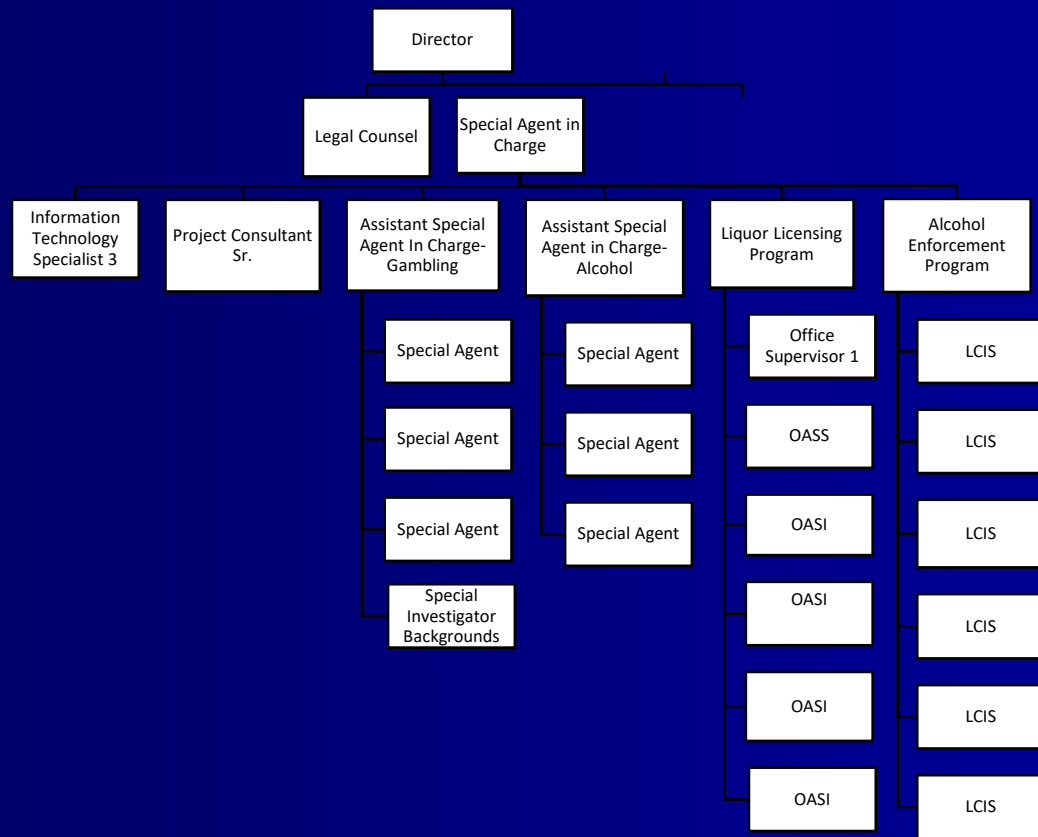
- Through cooperative investigations with the:
 - Gambling Control Board
 - Minnesota Lottery
 - Minnesota Racing Commission

Introduction



- Tribal-State compact compliance oversight for 11 tribal casinos at 20 gaming locations.
- Complete criminal history background checks for key management personnel at the request of the individual Gaming Regulatory Authority.

AGE staffing





K-9 Bia

- Currency detection
- 41 deployments since Fall 2022
- Over \$777 thousand recovered



Gaming Background Investigations



- Minnesota, like most jurisdictions, requires a license for those who want to operate a gambling-related business.
- These licenses are issued primarily for the manufacture or distribution of gambling equipment and devices.

Gaming Background Investigations



- AGE is statutorily responsible for the background and due diligence investigation prior to licensing, and those associated with vendor contracts and racetrack licenses.

299L..07 Alcohol & Gambling Enforcement

349.151 Subd. 8 and 349.155 Subd. 3 Gambling Control Board

349A.07 Subd. 2 Minnesota State Lottery

240.06 Subd. 3 Minnesota Racing Commission

Gaming Background Investigations



- The license investigation involves examination of the applicant's personal, business, and financial relationships and associations.
- The investigation ensures that the applicant meets the requirements for a license, and ensures public safety and integrity in the industry, as required by state law.

Lawful Gambling Investigations



- Provide investigative assistance to local units of government.
- Gambling investigative complaints are often complex, require specialized knowledge of state and federal gaming laws, and are time-consuming.

Lawful Gambling Investigations



- AGE is the primary state law enforcement agency to investigate crimes and violations relating to lawful and illegal forms of gambling.
- AGE special agents use informants, surveillance, fictitious player accounts, complete game audits, and use counterfeit/forgery detection to identify violations of state gambling laws.
- Prepare and submit investigations to county attorneys for criminal charges against individual violators and/or seek regulatory sanctions for violations involving state licensees.

Lawful Gambling Investigations



- Investigate violations of lawful gambling and illegal gambling
- Conduct background investigations and criminal history checks
- Issue licenses to gambling manufacturers and distributors
- Perform computer technology & forensics examinations
- Provides technical assistance and support to businesses and local units of government

Lawful Gambling Investigations



LOCAL NEWS

Apple Valley gas station worker charged with stealing thousands in lottery scratch-offs

WCCO
NEWS

By Stephen Swanson
February 7, 2025 / 1:34 PM CST / CBS Minnesota



Lawful Gambling Investigations



Charges: Zimmerman woman ran illegal gambling scheme through Facebook

An investigation discovered nearly 30 live streams of illegal gambling content on the woman's personal page.

TOMMY WIITA • FEB 12, 2025

Lawful Gambling Investigations



Austin woman facing several charges related to pull-tab scheme

Published 5:30 pm Thursday, July 18, 2024

By Eric Johnson

2024 Summary



- 124 illegal gambling
- 16 lottery
- 5 Minnesota Racing Commission
- 44 Gambling Control Board

2024 Summary



- 11 Tribal audits
- 18,398 slot machine accounting system review
- 525 video games of chance and blackjack inspections

Questions?



- Carla Cincotta, Director
651-201-7534
carla.cincotta@state.mn.us