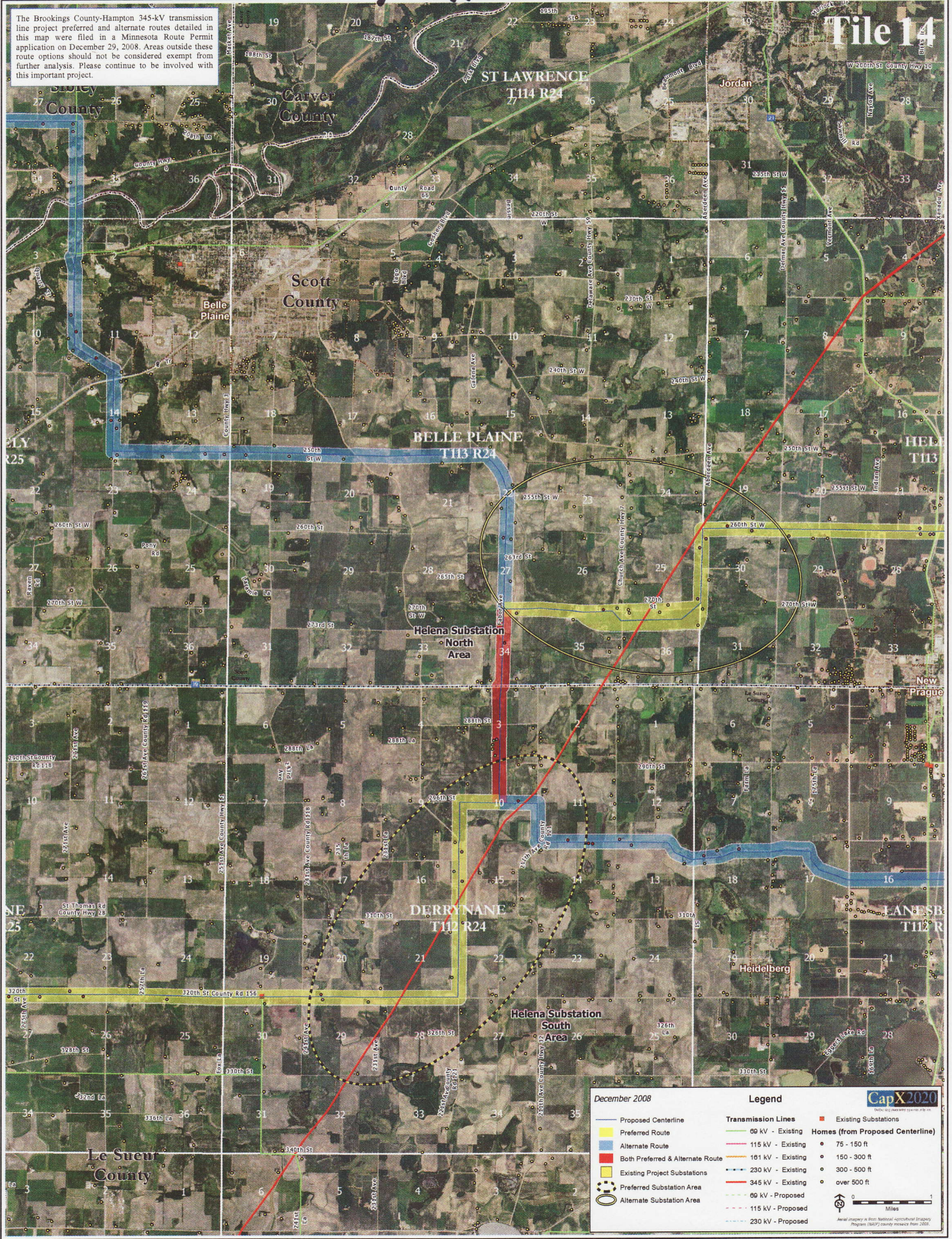


# COMAN / RES

File 14

The Brookings County-Hampton 345-kV transmission line project preferred and alternate routes detailed in this map were filed in a Minnesota Route Permit application on December 29, 2008. Areas outside these route options should not be considered exempt from further analysis. Please continue to be involved with this important project.



December 2008

**Legend**

— Proposed Centerline	— 66 kV - Existing	■ Existing Substations
— Preferred Route	— 115 kV - Existing	● Homes (from Proposed Centerline)
— Alternate Route	— 161 kV - Existing	○ 75 - 150 ft
— Both Preferred & Alternate Route	— 230 kV - Existing	○ 150 - 300 ft
● Existing Project Substations	— 345 kV - Existing	○ 300 - 500 ft
○ Preferred Substation Area	— 66 kV - Proposed	○ over 500 ft
○ Alternate Substation Area	— 115 kV - Proposed	
	— 230 kV - Proposed	

CapX2020

Scale: 0 to 1 Miles

Source: Aerial imagery is from National Agricultural Strategy Program (NASAP) county mosaics from 2005.

Coman / RES

Detail



Pink DOT = Coman Home