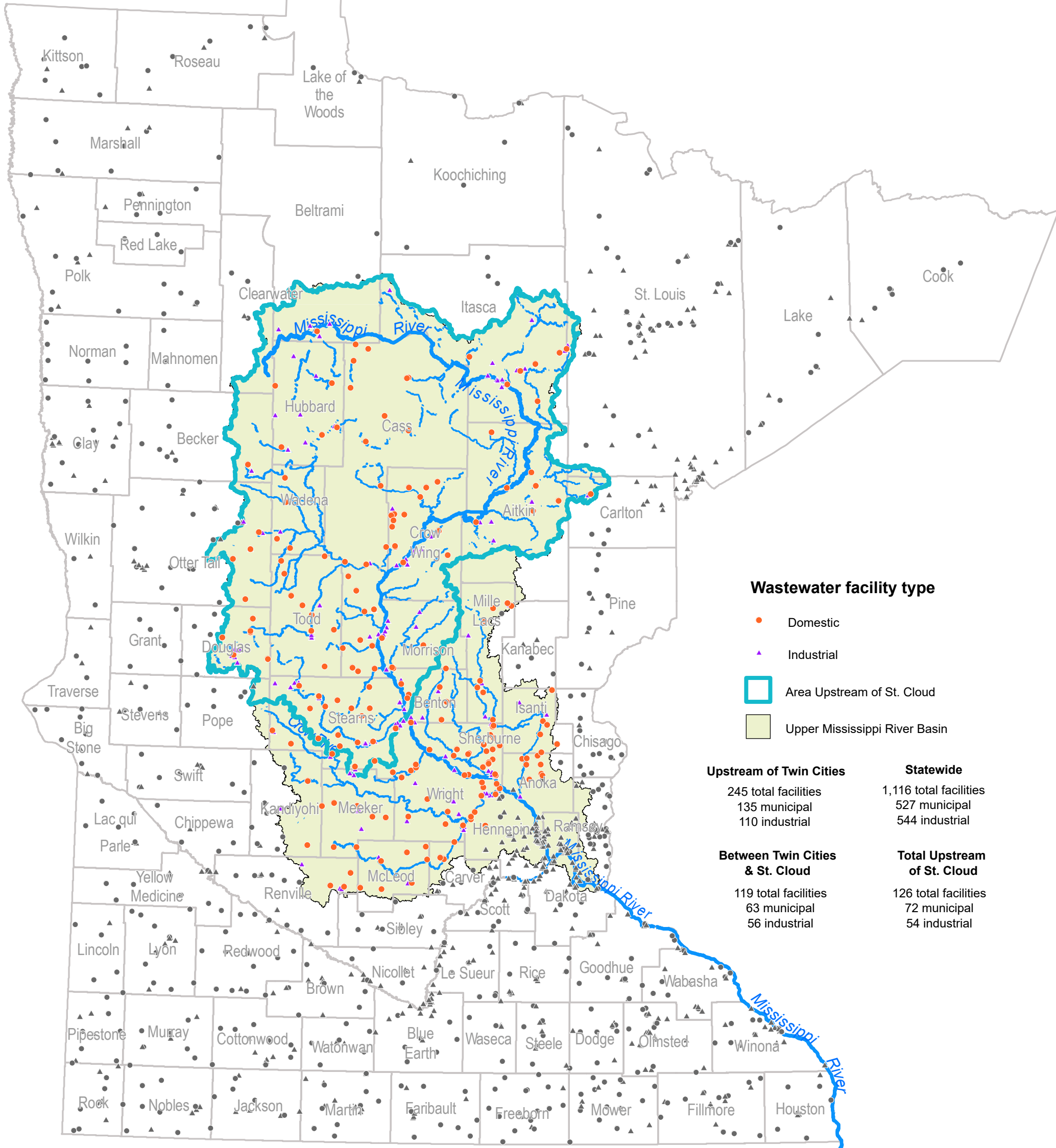


Wastewater Facilities by Type Statewide and Upstream from the Twin Cities

Source: Minnesota Pollution Control Agency



Wastewater facility type

- Domestic
- ▲ Industrial
- Area Upstream of St. Cloud
- Upper Mississippi River Basin

Upstream of Twin Cities

245 total facilities
135 municipal
110 industrial

Statewide

1,116 total facilities
527 municipal
544 industrial

Between Twin Cities & St. Cloud

119 total facilities
63 municipal
56 industrial

Total Upstream of St. Cloud

126 total facilities
72 municipal
54 industrial